

Straumann Group News. EuroPerio 10. Unlocking the potential of people's lives.

DISCOVER INNOVATIONS,
CHANGES, AND TRENDS
IN ESTHETIC DENTISTRY.

#Excellence in Immediacy
#Edentulous Patients
#Straumann Biomaterials
#Enablement&Education
#Straumann Group Digital Solutions
#Orthodontics
#Straumann Group Brands

Some products and services may not be available
in all countries. Please contact your country sales
representative for details.

EuroPerio 
An EFP Initiative | JUNE 15-18 | 2022
COPENHAGEN

straumanngroup

Welcome. Join us on a journey to unlock the potential of people's lives.

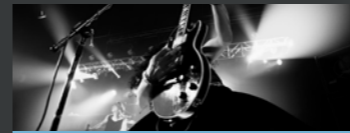
Since our foundation many decades ago, we've been inspired to make people's lives better. Our entrepreneurial spirit and commitment to scientific excellence, has made us a global market leader in esthetic dentistry. We've transformed millions of lives. And we'll transform millions more. Patients and professionals all over the world confirm that improved oral health increases self-confidence. It restores people's self-esteem and unlocks their life potential. We are proud to be able to make a fundamental difference.

Discover how we translate this bold statement into innovative solutions in oral and dental care, supporting dental professionals worldwide in these challenging times.

This is our contribution to the future of dentistry, and your invitation to bounce back with us.



TABLE OF CONTENT





straumanngroup

Envisioning a world
where oral health
is a source of
confidence



CUSTOMER CENTRIC

To become the most customer focused and innovative oral care company in the world.



LEADER

Entrepreneurial spirit and commitment to scientific excellence. Global market leader in esthetic dentistry.



INNOVATION

Pioneering powerhouse turning ideas into meaningful and disruptive innovation.



CULTURE

A Purpose led, people focused, player-learner, high-performance driven organization.



TRANSFORMING LIVES

More than 60 years inspired to make people's lives better. Transformed millions of lives. Transforming millions more.



Straumann® – A world-leading brand for confidence in esthetic dentistry.



NO. 1 IN GLOBAL IMPLANTOLOGY
The gold standard in evidence-based implant and esthetic dentistry.



INNOVATIVE BY NATURE
Industry benchmark for disruptive innovation backed by scientific evidence.



EDUCATION & SCIENTIFIC NETWORK
Largest global scientific network and total commitment to education in dentistry.



LEGENDARY SWISS ENGINEERING
Swiss premium quality, precision and pioneering innovative technologies.



INTEGRATED DIGITAL PERFORMANCE
Efficient and validated workflows, high-tech dental equipment and premium materials.



TRUSTED SERVICE
Global leader through highest service standards and enabling services focused on customer and patient care.

EXCELLENCE IN IMMEDIACY



Straumann® ImmediaXy™ Taking immediacy to the next level

With ImmediaXy™, Straumann takes immediate treatments to the next level. The Straumann® ImmediaXy™ ecosystem of solutions covers the whole workflow, from data acquisition to restoration, and was designed to enable clinicians to:

- Predictably and confidently perform immediate treatments, even in challenging indications
- Gain time and cost efficiency
- Accelerate revenue generation

This results in improved quality of life for patients and increased growth and efficiency for the dental practice.

Straumann® ImmediaXy™ Builds on innovation at every stage

- Seamless and flexible digital workflows: chairside, centralized and everything in-between
- Implants and instruments perfected for immediacy
- Highly effective biomaterials to meet any challenge
- Efficient prosthetic options for all indications



END-TO-END

Straumann® ImmediaXy™ covers and seamlessly connects all stages of the workflow: Data Acquisition, Planning&Design, Surgery and Restoration.



CONFIDENCE

Straumann® ImmediaXy™ capitalizes on Straumann's scientific approach, proven expertise and evidence-based solutions.^{1,2}



EFFICIENCY

Straumann® ImmediaXy™ puts operational simplicity and workflow optimization at the core of its solutions, whether digital, surgical or restorative.



COMPREHENSIVE PARTNERSHIP

As a true partner, Straumann offers service, training and practice growth initiatives in combination with excellent products and solutions.



Data Acquisition

Planning & Design

Surgery

Restoration

“Push boundaries predictably and confidently in immediacy.”

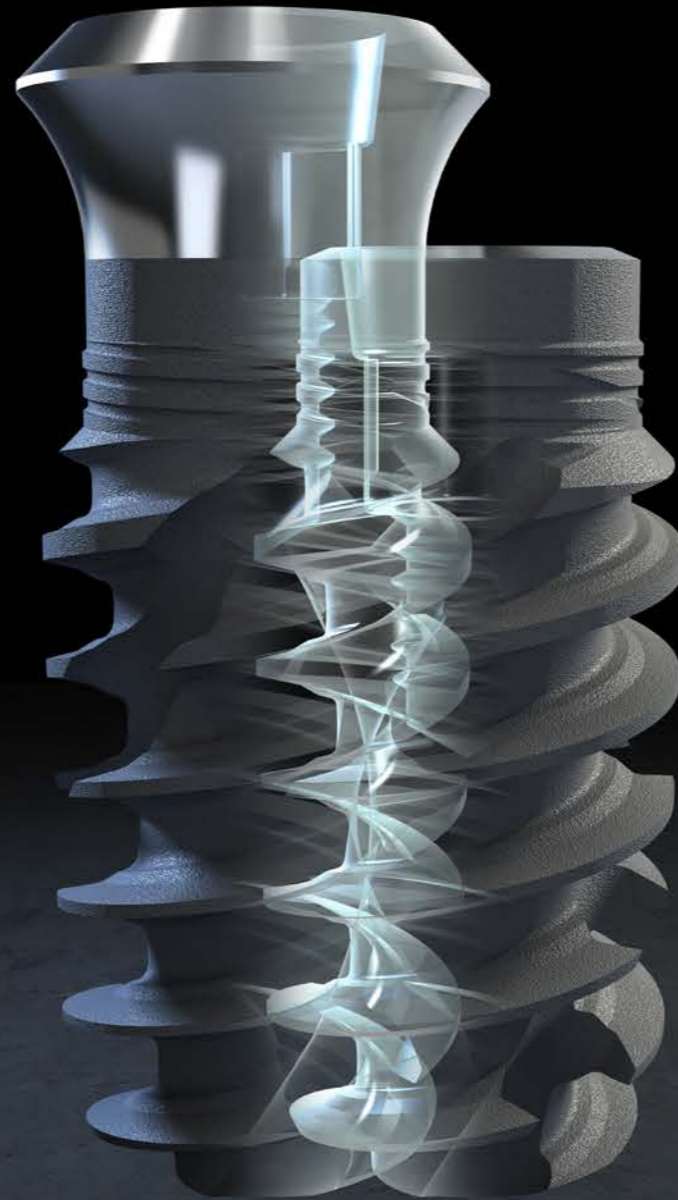
Straumann® ImmediaXy™

Taking immediacy to the next level.

Straumann® BLX and TLX with Dynamic Bone Management have been developed to make immediate protocols achievable, predictable and minimally invasive in all bone types.

- The same endosteal design means the same drill set for both systems
- Reduced invasiveness: Ø 3.75 mm for all tooth positions^{13, 16-18}, short implants¹⁹⁻²²
- One connection for all diameters
- Full digital integration for optimized workflows

Contact your local Straumann representative or visit:
www.straumann.com/immediaxy



Straumann® BLX

The new generation of bone-level implant

- Developed for immediate protocols in all bone types
- Simple yet versatile portfolio with under-contoured prosthetics for excellent soft-tissue management

Straumann® TLX

The proven benefits of tissue level now available also for immediate workflows

- Peri-implant health: no microgap at bone level, immediate soft-tissue attachment preservation
- Simplicity & efficiency: Built-in emergence profile and simple soft-tissue management, clear view and accessibility of the connection, even in the posterior region
- Two neck shapes (straight and flaring) for more clinical versatility*

*compared to Straumann TL



Discover BLX:
www.straumann.com/blx

Straumann® Temporary prosthetic solutions.

Immediate Temporary Abutment

For immediate and simple chairside temporization

- Designed for cement-retained crowns on BLT and BLX
- Easy choice of pre-sterilized TAN abutments with varied gingival heights
- The PMMA coping enables extraoral crown finishing



VITA CAD Temp for BLX

Immediate restorative solution

- Ready-to-prepare temporary abutments in tooth color
- For an esthetic outcome of temporary crowns and bridges
- Customizable chairside (or at the lab) for an efficient workflow



Straumann® Final prosthetic solutions.

Straumann® CARES® Customized Prosthetics

Ultimate restorative flexibility

- Performance thanks to best-in-class materials, technologies, services and know-how
- Flexibility with a comprehensive portfolio of restorative options and a choice of in-house or centralized workflows
- Simplicity: the one-stop-shop for all your CAD/CAM restorative needs



EDENTULOUS PATIENTS

Straumann® Edentulous Solutions
Because we are all unique.

Out of millions of people facing dental problems, there are no two cases the same. Having the right solution for each individual patient is a challenge every clinician faces.

With Straumann® Edentulous Solutions you have a whole portfolio designed to meet expectations of different patient groups and treat more patients.

Straumann® Edentulous Solutions Patient-centric approach.

Out of millions of people facing dental problems, there are no two cases the same. Having the right solution for each individual patient is a challenge every clinician faces.

With Straumann® Edentulous Solutions you have a whole portfolio designed to meet expectations of different patient groups and treat more patients.



STRAUMANN® EDENTULOUS REMOVABLE SOLUTIONS



Straumann® Mini Implant System



Straumann® Novaloc® Retentive System



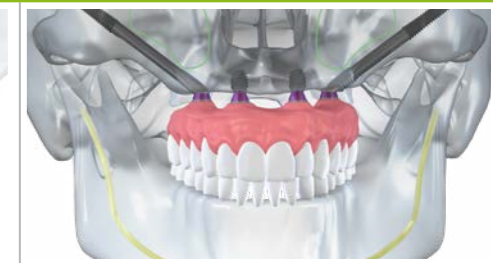
STRAUMANN® EDENTULOUS FIXED SOLUTIONS



Straumann® Pro Arch with BLT, BLX and TLX Implants



Straumann® TL and BL implant systems



Straumann® Zygomatic Implant with BLX



Straumann® Mini Implants Mini Implant. Maximum trust.

Smiling, laughing and eating naturally is a quality of life every edentulous patient would love to maintain.

Now you can provide edentulous patients presenting reduced horizontal bone availability with a less invasive*, immediate removable fixation of their overdenture.

You and your patients can rely on a trusted brand, premium quality and long-term scientific evidence.

*If GBR can be avoided



SLA®

SLA® – LONG-TERM SCIENTIFIC EVIDENCE

- High and consistent survival rates between 95.1% and 98.8% documented by different studies after 5- and 10-year follow-up.³⁻⁹
- Very low prevalence of peri-implantitis (1.8%) over the 10-year follow-up period.⁴

Roxolid®



ROXOLID® – PROVEN QUALITY

- Higher mechanical strength compared to titanium.¹
- The successful use of Roxolid® has been documented in numerous clinical trials with up to 5-year follow-ups.²



OPTILOC® – DURABILITY AND EFFICIENCY

- Reduced maintenance, excellent resistance to wear, space-saving design.



Contact your local Straumann representative or visit www.straumann.com/mini-implants

Straumann® Novaloc® A reliable connection that endures.

When durability and endurance count.

There are moments in life when you want a connection to be extremely reliable. Until now, hybrid denture attachment systems may have reached their limit in challenging implant situations. Now there's Novaloc®.

Straumann® Novaloc® for dental professionals, who want to offer edentulous patients a long-lasting, yet cost efficient removable restoration to give them back quality of life.



HIGH DURABILITY
Combination of ADLC abutment coating and PEEK retention inserts designed to resist wear for long-term performance of the prosthetic fixation and therefore minimized maintenance.



HIGH FLEXIBILITY
Situations with high implant divergences can be restored thanks to the Straumann® Novaloc® matrix design and to the Straumann® Novaloc® angulated abutments.



PATIENT COMFORT
The Straumann® Novaloc® Retentive System is designed for convenient insertion and removal of the prosthesis and for optimal adjustment of the denture retention according to patient's needs.



QUALITY OF LIFE
An implant supported removable denture is a cost-efficient implantable solution that can bring back quality of life to edentulous patients by improving comfort, function, esthetics, speech and self-esteem.

The Straumann® Novaloc® Retentive System is engineered for low maintenance and for high patient comfort. It offers excellent wear resistance for a durable high attachment performance. The angled abutments allow additional compensation of divergence between implants, providing high prosthetic flexibility.



Discover more: www.straumann.com/novaloc





Straumann® Pro Arch Tailored to fit. Designed to last.

Straumann® Pro Arch offers different treatment options for implant-borne fixed full-arch restorations. Help your patients regain lasting quality of life.

Proven and predictable
Results from retrospective study Straumann® Pro Arch 99.7% of 440 arches were loaded at the day of surgery. The overall implant survival rate was 98.1% after a median follow-up time of 1,5 years.¹⁰



Now also for Straumann® TLX Implant System



TREATMENT OPTIONS

Variety of treatment options for specific indications and different patient needs.^{11,12}

IMMEDIATE LOADING

Straumann® BLT and BLX implants designed for reliable primary stability.

REDUCED INVASIVENESS WITH ROXOLID®

Preserves bone, if bone grafting can be avoided, and allows more treatment options with narrow and short implants.^{13,14}

SLACTIVE® FOR COMPROMISED PATIENTS

Peace of mind even in challenging situations.¹⁵⁻²⁰

RESTORATIVE FLEXIBILITY

Prosthetic portfolio addresses patient's esthetic expectations within their financial resources.

PRACTICE GROWTH

Practice development and patient communication tools support your practice growth.



➔ Discover more: www.straumann.com/proarch



Straumann® Zygomatic Implant System Designed by experts with the patient in mind.

The Straumann® Zygomatic Implant System provides an immediate, predictable fixed solution for edentulous and patients with terminal dentition.^{21,22,24}

Our unique implant designs and straight-forward prosthetic concept provide versatile treatment options with immediate protocols and predictable fixed solutions, even in the most demanding clinical situations. The Straumann® Zygomatic Implant System helps you to tailor the solution to your patients anatomy types and bone deficits.²⁷

The Straumann® Zygomatic Implant System completes the Straumann edentulous portfolio with a premium solution so that you have all the tools to treat full arch indications from one source.

FROM EXPERTS FOR EXPERTS

Bringing experts together to provide a treatment you can trust in.

IMMEDIATE LOADING^{21,22,25}

Provides primary stability and allows immediate loading.

ANATOMICALLY BASED DESIGNS

Two designs with a unique combination of features to respect patients' anatomical structures.²⁶

STRAIGHT- FORWARD, VERSATILE PROSTHETICS²³

Versatile prosthetic portfolio with a single implant connection reduces complexity; compatible with Straumann® Edentulous Solutions.



Discover more: www.straumann.com/zygomatic

STRAUMANN BIOMATERIALS



Straumann® Biomaterials
Master any challenge.

Whether it's better healing, volume preservation, speed or natural esthetic results, we provide exactly what you need to meet your challenges, backed by scientific evidence and powered by innovation.

Straumann® Emdogain® and Emdogain® FL Mastering peri-implant treatment.



Adding Straumann® Emdogain® or Straumann® Emdogain® FL to the remedial treatment of peri-implant disease improves the clinical outcome of the procedure.^{1, 2}

25 years passed since the introduction of Straumann® Emdogain®. Over time, our biological material became a gold standard in periodontology due to its extensive documentation and solid clinical evidence. This legacy supported the extension of clinical indications to other fields of regenerative dentistry such as oral wound healing, flapless periodontal regeneration and peri-implant therapy.

- **Peri-implant mucositis:** Straumann® Emdogain® FL significantly reduces* the probing depth (PD) and bleeding on probing (BOP).^{2, 3}
- **Peri-implantitis:** Straumann® Emdogain® is positively associated with bone gain and implant survival and results in better treatment success.^{1, 4, 5}



➔ For more information on the clinical success visit: www.straumann.com/emdogain-fl

Straumann® Emdogain® FL Cultivating periodontal regeneration.

Differentiate your practice by offering a flapless regenerative periodontal treatment with Straumann® Emdogain® FL.

For the first time, true periodontal regeneration can be achieved in a minimally invasive way: without surgical flap.^{6,7} Based on decades of clinical experience in regenerative flap surgery, periodontal pockets up to 9 mm deep can now be regenerated and eliminated as part of flapless periodontal procedures with Straumann® Emdogain® FL.

Dr. Jochen Tunkel's combined regenerative and resective treatment approach

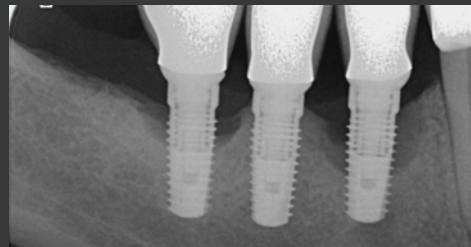


Fig. 1: X-ray at the beginning of therapy: severe periodontal defects at two of the three implants



Fig. 2: After debridement with Labrida BioClean™, the intrabony defects were carefully filled with a mixture of autologous bone chips, Straumann® XenoGraft and Straumann® Emdogain® covered with Jason® membrane.

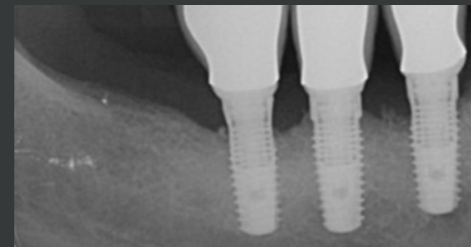


Fig. 3: X-ray taken 1 year after the regenerative-resective treatment.



MORE EFFECTIVE
Eliminate more pockets.⁸



MORE EFFICIENT
Achieve results comparable to periodontal flap surgery.⁹



INCREASE PATIENT COMFORT
Render your procedures milder and more tolerable.¹⁰

Straumann® XenoGraft and XenoFlex Mastering everyday cases.

Following the well-established treatment protocol using demineralized bovine bone granules for the efficient treatment of bone defects.

Straumann® XenoGraft and XenoFlex:

- Are easy to handle
- Have long-term volume stability
- XenoFlex is collagenated XenoGraft, offering spongy consistency after hydration
- Already successfully applied in over 500,000 cases worldwide



Jason® membrane Mastering performance.

The heart beats 100,000 times a day, meaning 4 million times a year

Jason® membrane exploits the power of the heart: thanks to its native collagen structure of porcine pericardium, this membrane has set a new standard in bone augmentation procedures. Its biocompatibility¹¹ and the extended barrier function¹² ensure a reliable performance in all kinds of augmentations, including complex cases and thin biotypes.



TRUST IN NATURE
Over 10 years of clinical success and scientific publications.



TENSILE STRENGTH
Tear resistance thanks to the native pericardium structure.



EASY HANDLING
Very thin yet not sticky to instruments.



VERSATILITY
Suitable for everyday clinical challenges



VOLUME STABILITY
Due to the xenogenic origin of material



EASY HANDLING
Easy to apply to the defect, after hydration



ENABLEMENT & EDUCATION

Straumann® Enablement and Education
Your success is our success.

Technologically, dentistry is evolving at a rapid pace. At the same time, “soft factors” and marketing activities are becoming more important in gaining new patients. We provide support that goes beyond products and technical skills. Whether you are experienced or just about to start your career as a dental professional: Straumann offers a variety of dedicated programs, as well as practice management and marketing tools. Furthermore, an extensive offering in training and continuous education will ensure that you and your practice stay at the forefront of dentistry.

Straumann® Smart
 Immerse to succeed.
 Discover the world of implant
 dentistry with us.



**CLASSROOM
 TRAINING**



**ONLINE
 TRAINING**



MENTORING



**SIMPLE PRODUCT
 PORTFOLIO**

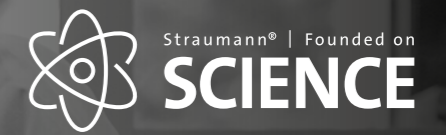


**LAB
 COMMUNICATION**



**PRACTICE
 AND PATIENT
 MARKETING**

→ For more information visit
www.straumann.com/smart



**Your confidence.
 Supported by
 scientific evidence.**

Straumann products are highly reliable and clinically safe, and this can only be achieved through a strong dedication to Science.

The dental community highly respects our scientific outlook and commitment, which is reinforced by the vast body of evidence that our products and solutions offer. Year after year, hundreds of peer-reviewed publications by independent researchers validate their excellent and long-term performance. This is extremely relevant for dentists and patients who choose products that are strongly supported by evidence and provide predictable outcomes.

Since the establishment of Straumann, we have closely collaborated with the leading clinicians, research institutes and universities worldwide to provide the clinical data and substantiation for our products that support their exceptional standards. Our products are continuously documented in different treatment scenarios. We always ascertain we have evidence before launching a product in market.
www.straumann.com/science

Straumann® Courses.



THE ITI – A STRONG COMMITMENT TO EVIDENCE-BASED PRACTICE

For over 40 years, Straumann has benefited from a close and fruitful relationship with the International Team for Implantology (ITI), the largest international organization in implant dentistry. The ITI is a driving force in education and the dissemination of knowledge in this field, focusing on the development of well-documented, evidence-based treatment guidelines and the consolidation of long-term data.

Almost 20,000 members from all over the world participate in ITI education and research activities and exchange their expertise to continuously improve their skills and treatment provided to the patients. www.iti.org

The Straumann Course website provides an overview of local and international courses from Straumann, botiss and ITI. Courses range from all levels of complexity with hands-on sessions and live surgeries.

→ Check local and international courses here:
www.straumann.com/courses

DIGITAL SOLUTIONS



Straumann Group Digital Solutions
Orchestrating digital efficiency.

Welcome to Digital Solutions, the integrated digital performance offering and brands of the Straumann Group. Efficient and validated workflows, high-tech dental equipment and premium materials.

Solutions for Dentists.

The Straumann Group Digital Solutions offering for dentists entails cost-effective, efficient, and easy-to-use hardware for intraoral scanning, printing and in-house milling. Dentists, lab technicians, as well as patients – they all benefit from a digital workflow that delivers time savings and allows for more time in communication and patient care.



3Shape Trios

Medit i700

Virtuo Vivo™

coDiagnostiX®

P series

P wash and P cure

P Pro Resins



Ready to embark on your digital journey? SCAN ME NOW



➔ Discover more: www.straumann.com/digital



Smile in a Box™ Focus on your passion – we take care of the rest.

Smile in a Box™ is a flexible treatment planning and manufacturing service to gain efficiency and practice growth. You select the services you want to focus on - we deliver everything else you need for your treatment in one box.



IMPROVE PATIENT EXPERIENCE
and treatment acceptance
by faster time to teeth and effective
communication.



GAIN EFFICIENCY
in your practice with
immediate protocols and
flexible workflow outsourcing.



MEET PATIENT EXPECTATIONS
with a predictable guided
surgery workflow. Benefit from
all-in-one delivery.



GROW YOUR BUSINESS
in a flexible way that suits your situation.
Establish digital workflows without
investment.



Get access: www.smileinbox.com

ORTHODONTICS

A black and white photograph of three women laughing joyfully at what appears to be a festival or outdoor event. The woman on the left has long dark hair and is wearing a light-colored t-shirt. The woman in the middle is wearing sunglasses, a patterned top, and a necklace. The woman on the right is wearing a hat and a dark tank top. The background is slightly blurred, showing other people and structures.

Straumann® Orthodontics
The next generation of integrated
orthodontics.

We are witnessing a paradigm shift created by changing patient behaviours and groundbreaking innovations in diagnostics, procedures and products. Be it artificial intelligence, digital equipment, software or clear aligners, the line between dentists and orthodontists is becoming increasingly blurred. We understand: both patient and dentist expect integrated, patient-friendly and effective solutions that are accessible and affordable.



Your partner in ortho

clearcorrect
A Straumann Group Brand

As a clinician, you're on a mission to improve lives. Your patients count on you, and that calling can be daunting to face alone. Fortunately, you don't have to.

We're ClearCorrect, the global orthodontics brand that's backed by the powerful legacy of innovation, research, and clinical excellence that the Straumann Group is known for.

We deliver the support you need, with the freedom you want, and the quality orthodontic products that you and your patients deserve.



Premier aligner

Engineered for precision, comfort, and esthetics, ClearCorrect aligners feature a unique combination of our proprietary **ClearQuartz™** material, high, flat trimline, and new customization options to help you achieve your orthodontic goals.



Empowering digital workflow

Our powerful, intuitive digital platform gives you control and flexibility from case submission all the way to completion. With **ClearPilot™** as your central treatment planning tool, case management is a breeze.



Your trusted partner in ortho

Ortho Campus embodies the legacy for excellence in education that the Straumann Group is known for, and is one of the many ways ClearCorrect partners with clinicians for success in orthodontics.

ClearCorrect™ aligners

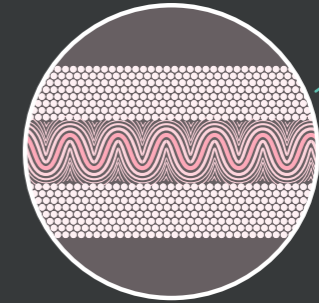
A unique combination, engineered to move teeth more predictably

What does it take to move teeth? It's simple, really: consistent, continuous force. Only ClearCorrect™ aligners feature a flat trimline above the gingival margin combined with our proprietary ClearQuartz™ tri-layer aligner material. The resulting aligner is remarkably retentive and effective, and doesn't sacrifice comfort, clarity, or resilience as it helps you achieve optimal results in a wide variety of cases.



ClearQuartz tri-layer material

Thanks to its multi-layer design, ClearQuartz retains 10x more of its initial force than other competitors¹, and retains its shape throughout the wear time of the aligner².

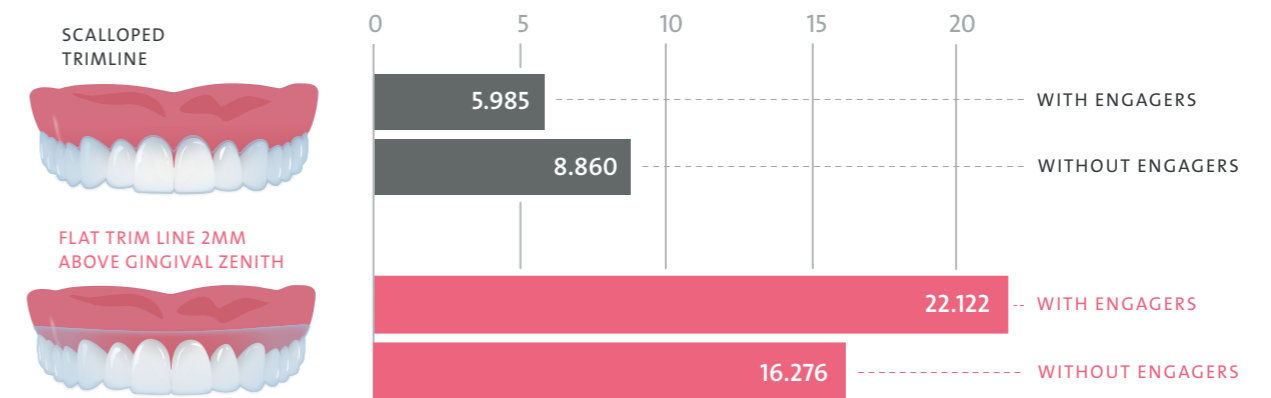


- Low-porosity material**
For toughness and stain-resistance
- Elastomeric layer**
Applies gentle, consistent, and continuous force

The ClearCorrect trimline: Proven to optimize fit and retention.

With a smooth, unscalped trimline that extends past the gingival margin, ClearCorrect aligners are more than 2.5x more retentive than scalloped aligners, and are engineered to achieve more complex tooth movements, even while reducing the need for engagers.

ClearCorrect aligners are over 2.5x more retentive vs. scalloped trimline³



¹ Data on file. Over 72 hours.
² Data on file vs 0.30 single layer material.
³ "The effect of gingival-margin design on the retention of thermoformed aligners" by Daniel P. Cowley, James Mah, and Brendan O'Toole in the Journal of Clinical Orthodontics: JCO 11/2012; 46(11):697-702.



ClearPilot lets you see it all: the case details, patient records, original prescription, comment history, and a wide variety of visualization tools. With ClearPilot, you and your patients can visualize personalized treatment outcomes, which can help support clinical evaluation, digital treatment planning, and increased patient engagement.

clearpilot

Powerful digital treatment planning

Customizing your treatment outcomes is easy with ClearPilot™, the intuitive treatment planning tool that gives you control and flexibility, from planning to approval.



Robust treatment planning tools with ClearPilot™



Multiview
view upper and lower arches in occlusion and independently all at the same time.



Millimeter grid
just how much overjet are you leaving? Just how much space needs to be closed? This feature will cut down on guess work.



Superimposition
activate this feature to compare any step to the starting position of treatment.



Occlusal heat map
Need to check on any heavy occlusal contacts? We've got just the tool for you.



Single tooth movement
Want even more control? Single tooth movement lets you customize your treatment plan by modifying the final position of each individual tooth.

The ClearPilot platform is updated regularly with new features and improvements—keep an eye out for the next exciting update!

Not all features available in all markets.

STRAUMANN GROUP



Neodent[®]: A brand and product you can rely on

Neodent[®] is a leading global brand, part of the Straumann Group, founded by a dentist for dentists with the purpose of changing lives of more patients. Neodent[®]'s solutions provide access to progressive treatment concepts, such as immediacy, enabling implant therapy access and affordability for creating new smiles every day.

NEODENT
congress

<https://neodentcongress.com.br/en/>

**save.
the.date**

18-20 MAY 2023



GLOBAL BRAND

Available in more than 80 countries with more than 3 million implants sold annually.



PROGRESSIVE TREATMENT CONCEPTS

Modern and reliable solutions.



FOUNDED BY A DENTIST TO DENTISTS

A legacy of more than 29 years focused on ease of use.



THERAPY ACCESS AND AFFORDABILITY

Accessibility to proven and affordable solutions.



ILAPEO

ILAPEO provides courses focusing on a better understanding of Neodent[®] system, technique and philosophy.

Offering a type of education that assists in increasing confidence in the professional-patient relationship.

The cooperation between Neodent[®] and ILAPEO seeks to promote a continuing education courses based on three main benefits:

NEODENT[®] EDUCATION PARTNER



TREATMENT EXPERIENCE

Get confidence through a comprehensive practical education including patient treatment.



TREATMENT OPTIONS

Increase the possibility of different treatments that you can offer to patient.



TREATMENT TECHNIQUES

Differentiate dental practice by offering patient most advanced convenient treatment technique such as immediacy.



DISCOVER MORE:
www.neodent.com

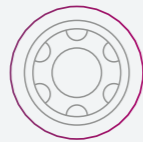


DISCOVER MORE:
www.neodent.com/ilapeo



Zirconia Implant System

A new **mindset**



A new flexibility mindset


Flexibility of a 2-pieces connection screw-retained zirconia-zirconia connection.



Exclusive ZiLock® connection:

Zi Lock, a unique patented and precise connection.

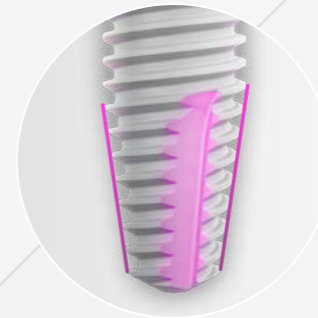
- A 2 pieces system
- Zirconia-zirconia contact
- Screw retained connection

 **DISCOVER MORE:**
www.neodent.com/zi

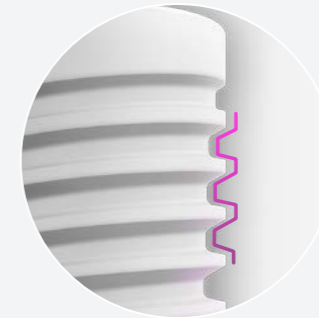


A new stability mindset

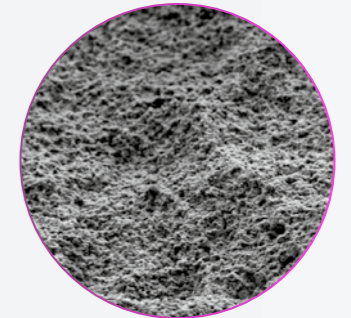
A naturally tapered implant design and implant treated surface.



APICALLY TAPERED WITH CHAMBER FLUTES



DOUBLE TRAPEZOIDAL THREAD DESIGN



SAND-BLASTED AND ACID ETCHED SURFACE



A new esthetic mindset

Comprehensive portfolio, achieving natural esthetic result.



ZIRCONIA BASE



ZIRCONIA BASE FOR C



ZIRCONIA CR ABUTMENT

Play your cards right.

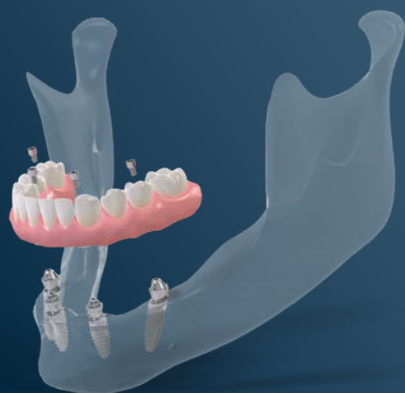


 **MEDENTIKA®**

Medentika®.
Prosthetics perfected –
implants engineered.



IPS IMPLANT SYSTEM



MPS MULTI PROSTHETIC SYSTEMS



Compatible with all major implant systems.



**LEADING
MANUFACTURER**



**PASSION FOR
PRECISION**



**MADE IN
GERMANY**
Established
since 2005



**GLOBAL
distribution**



2.8 MILLION
implants and
abutments
per year

QUATTROCONE

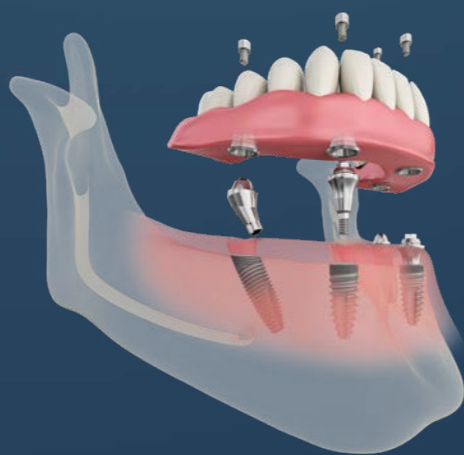


- Optimized primary stability
- Bone friendly
- Particularly suitable for:
 - Immediate placement
 - Immediate loading
 - QuattroFix concept



QUATTROCONE System has been developed by implantologists for implantologists. QUATTROCONE30 is designed to enhance the range especially for the QuattroFix** concept

QUATTROFIX



QUATTROFIX is a special concept for fixed, full-arch restoration for edentulous patients with an atrophic alveolar ridge on two straight and two 30 degree-inclined implants

Titanium base
ASC Flex –
The original from
Medentika®



One design →

NEW

COMPATIBLE WITH ALL MAJOR IMPLANT SYSTEMS



MegaGen
AnyRidge®*



Dentium
SuperLine Implantium,
Implantium II



NEOSS®
ProActive®*

PIONEERED BY
MEDENTIKA

* Based on the principle of crestal bone preservation by a micro thread.

** QuattroFix is a special treatment concept for fixed, full-arch restoration for edentulous patients with an atrophic alveolar ridge on two straight and two 30 degree-angled implants.

*** Camlog products are supplied by Camlog Biotechnologies AG, who have no legal or commercial relation with Medentika®.

Digital libraries are available for the following manufacturers: (May depend on the updates of the respective manufacturers)





#MADE
FOR
YOU

Virtual visit of
the Anthogyr site



Creating new paths in dental implantology.

Anthogyr is your trusted partner for performance. An agile brand that goes where others don't. Experts in the medical field for more than 70 years, we dare to create ingenious solutions to your dental challenges. Reach your objectives and restore your patients' life to freedom. Let's create new paths together.



WE MOVE AS ONE

Listening, understanding
and anticipating your needs
to build a trusting
relationship.



AUDACITY TO ADVANCE

Passion for daring
and dynamic
concepts in dental
implantology.



PROSTHETICS DRIVEN

Implants with
prosthetic and
integrated digital
solutions in mind.



HIGH TECH EXPERTISE

70+ years of French
engineering and
manufacturing skill
in medical devices.



PERFORMANCE SOLUTIONS

A smart and user-friendly
product line for all treatment
preferences, from simple to
demanding procedures.

axiomx3[®]

BEYOND FRONTIERS

Explore new territories, take up new implant challenges to better meet the needs of all your patients. A holistic response adapted to clinical diversity, while respecting and preserving the most precious environment: bone. Always bring you more advantages: simplify your actions, offer agile and adapted protocols according to indications and in particular immediate treatments. At your side, whatever your daily challenge, an effective clinical response, a new experience, beyond your frontiers.

ENTER NEW WORLDS

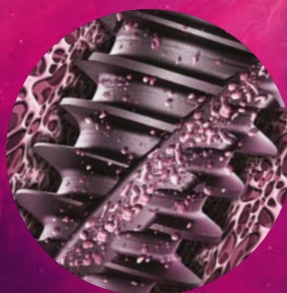
Universal bone anchorage

Enjoy a high performance design for **universal anchorage** in all bone densities

Bone preservation

More space for bone, decreasing insertion efforts in hard bone without sacrificing stability and efficient osteotomy

BONE IS GOLD



Full control guidance

More than a powerful insertion: go where you want to go!

Frictionless integration

Enjoy the Axiom[®] ecosystem, designed for efficient implantology

Axiom[®] confidence, almost 15 years of clinical experiences and success

Answer patients needs

Meet the requirements of your patients, offer **modern therapeutic options**, whatever their clinical situation



Slim threads

Easier insertion

Alternative thread length

*Bone preservation
Lower insertion efforts
Lateral guidance*

3 bi-directional cutting flutes

*Dynamic engagement all over the implant height
Insertion axis correction*

Thin apex

Efficient engagement in slim implant beds

Single conical connection

Common to Axiom[®] Bone Level - Ø 2.7 mm

Reduced neck diameter

Less cortical stress

Tapered profile

Optimal primary stability in soft bone

Rounded apex

Sinus membrane protection

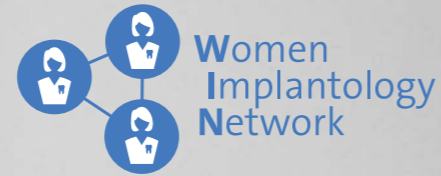
BONE CARE DESIGN
PATENTED



More information on our website

We are a global network of dental professionals:

Engaging women in implantology
Empowering women to follow their ambitions
and advance into leadership roles



Why?

Women account for an increasing percentage of dental school graduates, and only a minority become active in implant dentistry. If this trend continues, patient access to implant therapy and maintenance is at risk. There is also a shortage of female role models: surgeons, speakers, key opinion leaders and practice owners. We aim to engage women at all stages of their career in implantology and inspire them to advance as leaders and role models.

By building a strong global community, supported by the biggest players in Implantology, we will make a change.

How?

1. **Raising awareness** of the situation and featuring female talents.
2. **Networking opportunities** at WIN events, dental congresses and online.
3. **State-of-the-art implant dentistry** via the WIN classroom, summaries of scientific evidence and skill-building workshops.
4. **Mentorship** with WIN Circles, online mentoring, and leadership tips.

Your benefits as a WIN member



Annual WIN events*
Such as WIN Summits and WIN get togethers.



Scientific Highlights
Updates on the latest findings in implant dentistry.



Professional development
Skill-building workshops
Visibility and lecturing opportunities for role models



Free access to the WIN Classroom
High quality clinical practice recommendations from the ITI Academy.



WIN online community
Where you can network and interact with peers as well as benefit from mentoring in a dedicated online group.



20% reduction on first year ITI membership
Digital membership (not cumulative with other discounts).

*Might be free of charge or with additional fee



Local WIN
Additional offerings from your local WIN Community such as WIN Talks, Implantology Day and more.

“Patients worldwide need more women to be engaged in implant dentistry, and female dentists need the strength and encouragement that WIN provides.”

Charlotte Stilwell, ITI President Elect

supported by:



Scan to
join WIN
today.



win@straumann.com
www.straumann-group.com/win

REFERENCES

Excellence in Immediacy

1 Chiapasco M, Casentini P, Zaniboni M, Corsi E, Anello T. Titanium-zirconium alloy narrow-diameter implants (Straumann Roxolid[®]) for the rehabilitation of horizontally deficient edentulous ridges: prospective study on 18 consecutive patients. *Clin Oral Implants Res.* 2012 Oct;23(10):1136-41. **2** Quiryren M, Al-Nawas B, Meijer HJA, Razavi A, Reichert TE, Schimmel M, Storelli S, Romeo E. Small-diameter titanium Grade IV & titanium-13zirconium implants in edentulous mandibles: 3-year results from a double-blind, randomized controlled trial. *Clin Oral Implants Res.* 2015 Jul;26(7):831-40.


Edentulous Patients

1 Norm ASTM F67 (states min. tensile strength of annealed titanium). **2** <http://www.straumann.com/science-roxolid.html>. **3** Fischer K, Stenberg T.: Prospective 10-year cohort study based on a randomized controlled trial (RCT) on implant-supported full-arch maxillary prostheses. Part 1: sandblasted and acid-etched implants and mucosal tissue. *Clin Implant Dent Relat Res.* 2012 Dec;14(6):808-15. **4** van Velzen FJ, Ofec R, Schulten EA, Ten Bruggenkate CM. 10-year survival rate and the incidence of peri-implant disease of 374 titanium dental implants with an SLA surface: a prospective cohort study in 177 fully and partially edentulous patients. *Clin Oral Implants Res.* 2015 Oct;26(10):1121-8 **5** Cochran DL, Jackson JM, Bernard JP, ten Bruggenkate CM, Buser D, Taylor TD, Weingart D, Schoolfield JD, Jones AA, Oates TW Jr. A 5-year prospective multicenter study of early loaded titanium implants with a sandblasted and acid-etched surface. *Int J Oral Maxillofac Implants.* 2011 Nov-Dec;26(6):1324-32. **6** Cochran D, Oates T, Morton D, Jones A, Buser D, Peters F. Clinical field trial examining an implant with a sand-blasted, acid-etched surface. *J Periodontol.* 2007 Jun;78(6):974-82. **7** Bornstein MM, Schmid B, Belser UC, Lussi A, Buser D. Early loading of non-submerged titanium implants with a sandblasted and acid-etched surface. 5-year results of a prospective study in partially edentulous patients. *Clin Oral Implants Res.* 2005 Dec;16(6):631-8. **8** Roccuzzo M, Aglietta M, Bunino M, Bonino L. Early loading of sandblasted and acid-etched implants: a randomized-controlled double-blind split-mouth study. Five-year results. *Clin Oral Implants Res.* 2008 Feb;19(2):148-52. **9** Derks J, Schaller D, Håkansson J, Wennström JL, Tomasi C, Berglundh T. Effectiveness of Implant Therapy Analyzed in a Swedish Population: Prevalence of Peri-implantitis. *J Dent Res.* 2016 Jan;95(1):43-9. doi **10** Calvo-Guirado JL, Lopez Torres JA, Dard M, Javed F, Perez-Albacete Martinez C, Mate Sanchez de Val JE. Evaluation of extrashort 4-mm implants in mandibular edentulous patients with reduced bone height in comparison with standard implants: a 12 month results. *Clin Oral Impl Res* 27, 2016, 867-874. **11** Piano S, Romeo E, Sbricoli L, Pisoni G, Cea N, Lops D. Simplified procedure for the immediate loading of a complete fixed prosthesis supported by four implants in the maxillary jaw: a 2-year prospective study. *Clin. Oral Impl. Res.* 00, 2015, 1-7. **12** Müller F et al. Small-diameter titanium grade IV and titanium-zirconium implants in edentulous mandibles: five-year results from a double-blind, randomized controlled trial. (2015). *BMC Oral Health.* 2015 Oct 12;15(1):123. **13** Al-Nawas B, Domaga-la P, Fragola G, Freiburger P, ^ Ortiz-Vigón A, Rousseau P, Tondela J. A prospective non-interventional study to evaluate survival and success of reduced diameter implants made from titanium-zirconium alloy. *J Oral Impl*, submitted. PMID:24666383. **14** Nicolau P, Guerra F, Reis R, Krafft T, Benz K, Jackowski J. 10-year results from a randomized controlled multicenter study with immediately and early loaded SLActive implants in posterior jaws. Presented at 25th Annual Scientific Meeting of the European Association of Osseointegration – 29 Sep – 1 Oct 2016. **15** Paris Heberer S, Kilic S, Hossamo J, Raguse J-D, Nelson K. Rehabilitation of irradiated patients with modified and conventional sandblasted, acid-etched implants: preliminary results of a split-mouth study. *Clin. Oral Impl. Res.* 22, 2011; 546–551. **16** Nelson K, Stricker A, Raguse J-D and Nahles S (2016). Rehabilitation of irradiated patients with chemically modified and conventional SLA implants: a clinical clarification. *J Oral Rehabil*, 43: 871–872. doi:10.1111/joor.12434. **17** Machuca G, Cabrera JJ. “A prospective, case-control clinical study of titanium-zirconium alloy implants with hydrophilic surface in patients with Type 2 diabetes mellitus” Manuscript submitted. **18** Buser D et al. (2017). Development of Implant Stability Quotient values of implants placed with simultaneous sinus floor elevation - results of a prospective study with 109 implants. *Clin Oral Implants Res.* 2017 Jan;28(1):109-115. doi: 10.1111/clr.12768. Epub 2016 Jan 16. A Proline-Rich Peptide Mimic Effects of EMD in Rat Oral Mucosal Incisional Wound Healing. **19** Villa O, Wohlfahrt JC, Mdla I, Peltzold C, Reseland JE, Snead ML, Lyngstadaas SP. *J Periodontol.* 2015 Dec;86(12):1386-95. **20** Eckert

SE, Hueler G, Sandler N, Elkattah R, McNeil DC. Immediately Loaded Fixed Full-Arch Implant-Retained Prosthesis: Clinical Analysis When Using a Moderate Insertion Torque. *Int J Oral Maxillofac Implants.* 2019 Jan 31. **21** Tuminelli FJ, Walter LR, Neugarten J, Bedrossian E. Immediate loading of zygomatic implants: A systematic review of implant survival, prosthesis survival and potential complications. *Eur J Oral Implantol.* 2017;10 Suppl 1:79-87. **22** Fatigue Testing Report – ZAGA Implant System. **23** Boyes-Varley JG, Howes DG, Lownie JF, Blackbeard GA. Surgical Modifications to the Branemark Zygomaticus Protocol in the treatment of the severely resorbed Maxilla: A Clinical Report. *Int. J Oral Maxillofac. Implants* 2003;18:232–237. **24** Wang F, Monje A, Lin GH, Wu Y, Monje F, Wang HL, Davó R. Reliability of four zygomatic implantsupported prostheses for the rehabilitation of the atrophic maxilla: a systematic review. *Int J Oral Maxillofac Implants.* 2015 Mar-Apr;30(2):293-8. **25** Jung RE, Al-Nawas B, Araujo M, Avila-Ortiz G, Barter S, Brodala N, Chappuis V, Chen B, De Souza A, Almeida RF, Fickl S, Finelle G, Ganeles J, Gholami H, Hammerle C, Jensen S, Jokstad A, Katsuyama H, Kleinheinz J, Kunavisarut C, Mardas N, Monje A, Papaspyridakos P, Payer M, Schiegnitz E, Smeets R, Stefanini M, Ten Bruggenkate C, Vazouras K, Weber HP, Weingart D, Windisch P. Group 1 ITI Consensus Report: The influence of implant length and design and medications on clinical and patient-reported outcomes - *Clin Oral Implants Res.* 2018 Oct;29 Suppl 16:69-77. **26** Aparicio C, López-Piriz R, Albrektsson T. ORIS Criteria of Success for the Zygoma-Related Rehabilitation: The (Revisited) Zygoma Success Code. *Int J Oral Maxillofac Implants* 2020;35:366–378. **27** Aparicio C, Balshi T J, Chow J, David L, Davo R, McLellan G, Nicolopoulos C, Peñarrocha M, Pikos M A, Polido W, Zarrinkelk H, Malevez C. The Zygomatic Osteotomy Revisited. ZAGA Consensual Guide for Zygomatic Surgery Decision Taking. *Int J Oral Maxillofac Implants* 2020 (accepted).

Straumann Biomaterials

1 Esberg A, Isehed C, Holmlund A, Lundberg P. Peri-implant crevicular fluid proteome before and after adjunctive enamel matrix derivative treatment of peri-implantitis. *J Clin Periodontol*, 2019. 46(6): p. 669-677. **2** Faramarzi M, Goharfar Z, Pourabbas R, Kashefimehr A, Shirmohmmadi A. Microbiological and clinical effects of enamel matrix derivative and sustained-release micro-spherical minocycline application as an adjunct to non-surgical therapy in peri-implant mucosal inflammation. *Journal of the Korean Association of Oral and Maxillofacial Surgeons.* 2015;41(4):181-9. **3** Kashefimehr A, Pourabbas R, Faramarzi M, Zarandi A, Moradi A, Tenenbaum HC, et al. Effects of enamel matrix derivative on non-surgical management of peri-implant mucositis: a double-blind randomized clinical trial. *Clinical oral investigations.* 2017;21(7):2379-88. **4** Isehed C, Holmlund A, Nervert S, Svenson B, Johansson I, Lundberg P. Effectiveness of enamel matrix derivative on the clinical and microbiological outcomes following surgical regenerative treatment of peri-implantitis. A randomized controlled trial. *Journal of clinical periodontology.* 2016;43(10):863-73 **5** Isehed C, Svenson B, Lundberg P, Holmlund A. Surgical treatment of peri-implantitis using enamel matrix derivative, an RCT: 3- and 5-year follow-up. *Journal of clinical periodontology.* 2018;45(6):744-53. **6** Shujaa Addin A, Akizuki T, Matsuura T, Hoshi S, Ikawa T, Maruyama K, Ono W, Fukuba S, Izumi Y. Histological healing after nonsurgical periodontal treatment with enamel matrix derivatives in canine experimental periodontitis. *Odontology.* 2018 Jul;106(3):289-296. **7** Mellonig JT, Valderrama P, Gregory HJ, Cochran DL. Clinical and histologic evaluation of non-surgical periodontal therapy with enamel matrix derivative: a report of four cases. *J Periodontol.* 2009 Sep;80(9):1534-40. **8** Graziani F, Gennai S, Petrini M, Bettini L, Tonetti M. Enamel matrix derivative stabilizes blood clot and improves clinical healing in deep pockets after flapless periodontal therapy: A Randomized Clinical Trial. *J Clin Periodontol.* 2019 Feb;46(2):231-240. **9** Aimetti M, Ferrarotti F, Mariani GM, Romano F. A novel flapless approach versus minimally invasive surgery in periodontal regeneration with enamel matrix derivative proteins: a 24-month randomized controlled clinical trial. *Clin Oral Investig.* 2017 Jan;21(1):327-337. **10** Wennström JL, Lindhe J. Some effects of enamel matrix proteins on wound healing in the dento-gingival region. *J Clin Periodontol.* 2002 Jan;29(1):9-14. **11** Rothamel et al. 2012, Biocompatibility and Biodegradation of a Native, Porcine Pericardium Membrane. Results from in vitro/in vivo Examination, *J. Int J Oral Maxillofac Implants*, 27(1):146-54. **12** Barbeck et al. 2015, Porcine dermis and pericardium-based, non-cross-linked materials induce multinucleated giant cells after their in vivo implantation: A physiological reaction? *J Oral Implantol.*, 41(6):e267-81.

A black and white photograph of a man and a woman smiling and making a heart shape with their hands. The man is on the left, and the woman is on the right. They are both looking towards the camera with joyful expressions. Their hands are positioned in the center of the frame, with their fingers interlaced to form a heart shape. The background is slightly blurred, showing an indoor setting.

International Headquarters

Institut Straumann AG
Peter Merian-Weg 12
CH-4002 Basel, Switzerland
Phone +41 (0)61 965 11 11
Fax +41 (0)61 965 11 01
www.straumann.com

© Institut Straumann AG, 2022. All rights reserved.
Straumann® and/or other trademarks and logos from
Straumann® mentioned herein are the trademarks or
registered trademarks of Straumann Holding AG
and/or its affiliates.

Straumann News
490.768/en/A/00 05/22