

Straumann® PURE Ceramic Implant Monotype
Discover natural PURE white.
Love your smile.





OUTSTANDING ESTHETICS

Favorable soft tissue attachment,
high-end esthetic restorations



PROVEN QUALITY

High performance zirconia ceramic,
100 % proof tested

The natural and strong solution. Makes patients love their smiles.

Nothing is more winning than a light-hearted and happy smile. With the PURE Ceramic Implant Monotype even very demanding patients can smile with confidence. Without compromising on esthetics, reliability and the most natural choice of material.

With the Straumann® PURE Ceramic Implant Monotype you can grant the best esthetic, natural, metal-free and strong treatment to your patients. They will benefit from all the highly esthetic advantages of a natural ceramic implant, ivory-colored like a natural tooth root and even in cases of thin gingiva biotypes not shining through. Yet you can rely on our high-performance zirconia ceramic material, being even stronger as the gold standard, grade-4 titanium implants.

The Straumann® PURE Ceramic Implant Monotype is the result of more than 12 years of relentless research and development until the ceramic implant complied with our premium quality standards. It combines Swiss quality, precision, strength and clinical success in an innovative solution that helps you to meet the needs of your patients.

The Straumann® PURE Ceramic Implant Monotype is available in the endosteal diameters of 4.1 mm and 3.3 mm.



EXCEPTIONAL SURFACE

ZLA® surface with revolutionary osseointegration features



METAL-FREE

A metal-free alternative to titanium implants



INNOVATIVE

A new system that helps you expand your patient pool

PURE Ceramic Implant Monotype



| Esthetics

- High-end esthetic restorations thanks to ivory colored natural ceramic material
- In general, more favorable soft tissue attachment around ceramic than around titanium, with blood circulation similar to that around natural tooth^{1,2}



Preferably ceramic implants



Preferably metallic implants



| Innovative

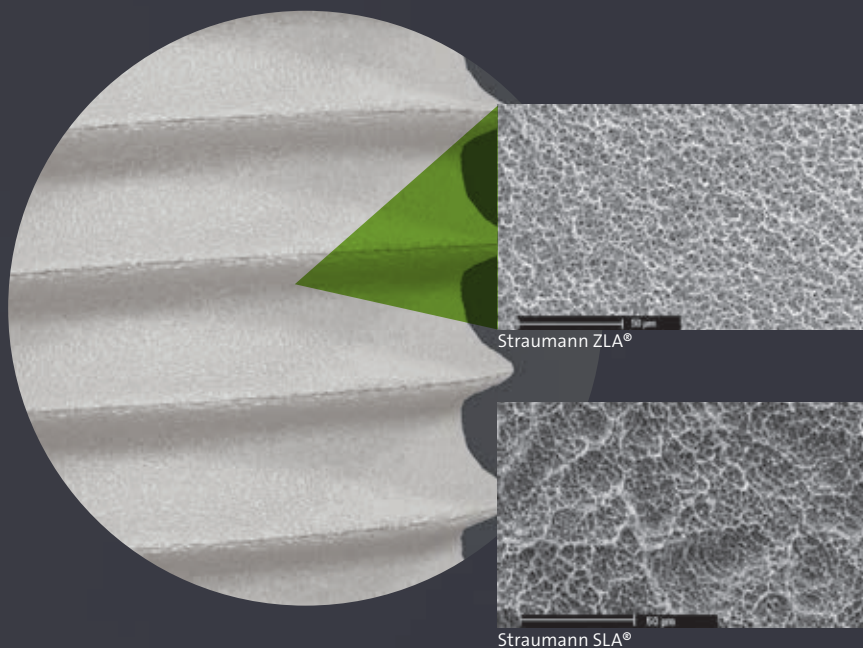
- A recent survey conducted in Europe with more than 250 participants showed that more patients would prefer a ceramic implant over a titanium implant even when this means higher treatment costs and longer treatment time³
- Follows well proven Straumann surgical protocol, no additional surgical instruments needed
- Suitable for guided surgery



| Quality

- High-performance zirconia ceramic (Y-TZP) with higher fatigue strength than grade-4 titanium implants^{4,5}
- 100 % proof test in which every single Straumann® PURE Ceramic Implant is tested mechanically before leaving the production site⁵
- Excellent clinical performance with 97.5 % survival and success rate after three years⁶





| ZLA® surface

- ZLA®, similar in macro and micro roughness to the original Straumann® SLA® surface
- Revolutionary osseointegration properties: Healing time comparable to well established SLA®⁷⁻⁹
- Less plaque attachment – an important factor for long-term implant success¹⁰

| Metal-free

- 100 % metal-free restoration possible

Outstanding esthetic results with a surface that works

NATURAL CERAMIC

The PURE Ceramic Implant Monotype has a natural ivory color which most closely resembles the color of natural tooth roots. This gives the most natural look even in thin gingiva biotypes.

FAVORABLE SOFT-TISSUE ATTACHMENT

Clinical settings where the Straumann® PURE Ceramic Implant Monotype was placed in the esthetic zone, demonstrated excellent esthetic outcomes with favorable soft tissue attachment and papilla formation around the implant after three year follow-up⁶ and even after five year follow-up (Case courtesy of Dr. Gahlert)

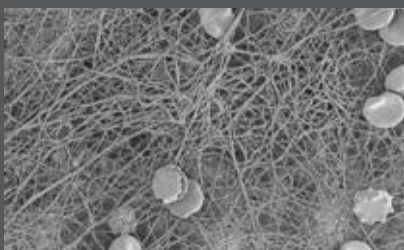


Demonstration: soft tissue attachment to the Straumann® PURE Ceramic Implant Monotype

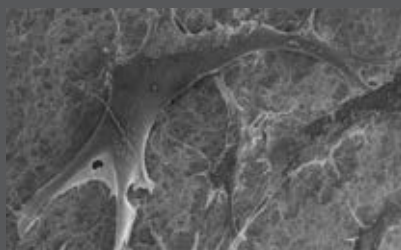


Clinical case with five year follow-up

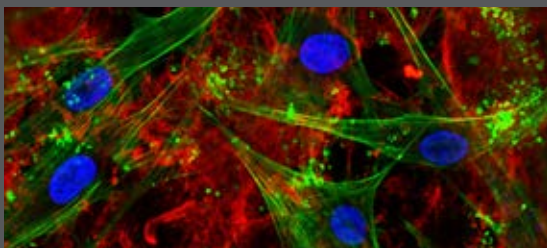
REVOLUTIONARY OSSEOINTEGRATION FEATURES



Pronounced Fibrin network builds up on the ZLA® surface. Fibrin positively influences wound healing (M. Rottmar et al., manuscript in preparation)



Bone cells growing on ZLA® surface (M. Rottmar et al., manuscript in preparation.)

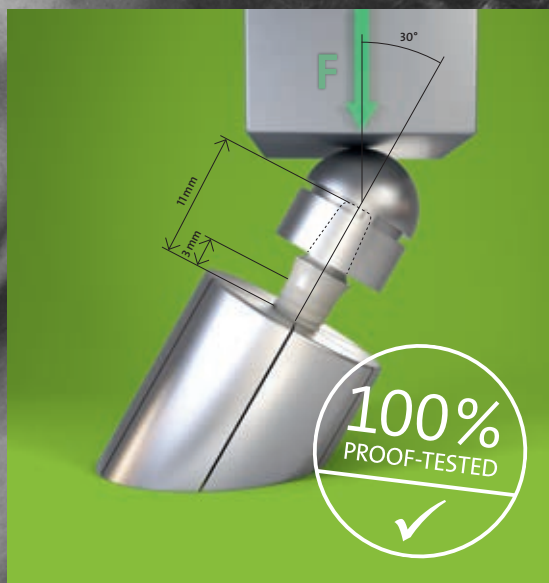


Confocal laser scanning microscopy visualizing seeded bone cells and pronounced fibrin network on the ZLA® surface after incubation in human whole blood. Fibrin network (red), actin cytoskeleton (green), nuclei (blue). (M. Rottmar et al., manuscript in preparation.)



Histology of newly formed bone in intimate contact to PURE Ceramic Implant. (Pre-clinical study: S. Roehling, S. Milz, AO Research Institute, Davos, CH)





OUTPERFORMING QUALITY

Ceramic implants from Straumann® are designed to support greater loads than expected in actual use, demonstrating safety and exceptional design integrity. Still every single PURE Ceramic Implant has to undergo a proof test before it leaves the Straumann production facility. The Straumann® PURE Ceramic Implant 100% proof test is a unique process in the history of dental implant production and ensures an unprecedented level of quality assurance and ultimate safety.



Contact your local Straumann representative now or visit www.straumann.com.

REFERENCES

1 Kajiwaru N, Masaki C, Mukaibo T, Kondo Y, Nakamoto T, Hosokawa R. Soft tissue biological response to zirconia and metal implant abutments compared with natural tooth: microcirculation monitoring as a novel bioindicator. *Implant Dent* 2015;24(1):37-41. 2 Glauser R, Sailer I, Wohlwend A, Studer S, Schibli M, Schärer P. Experimental zirconia abutments for implant-supported single-tooth restorations in esthetically demanding regions: 4-year results of a prospective clinical study. *Int J Prosthodont*. 2004 May-Jun;17(3):285-90. 3 Roehling S, Engelhardt-Woelfler H, Gahlert M. Full ceramic implants as an alternative to titanium? A demographic evaluation in Switzerland and Germany. Publication in preparation 2017. 4 Bormann KH, Gellrich NC, Kniha H, Dard M, Wieland M, Gahlert M. Biomechanical evaluation of a microstructured zirconia implant by a removal torque comparison with a standard Ti-SLA implant. *Clin Oral Implants Res*. 2012;Oct;23(10):1210-6. doi: 10.1111/j.1600-0501.2011.02291.x. Epub 2011 Nov 14. 5 Institut Straumann AG, Straumann® PURE Ceramic Implants: A 100 % proof test ensures reliable implant strength. 03/14 490.028/en/B/001. www.straumann.com. 6 Bormann KH, Gellrich NC, Kniha H, Schild S, Weingart D, Gahlert M. A Prospective Clinical Study to Evaluate the Performance of Zirconium Dioxide Dental Implants in Single Tooth Gaps in the Maxilla and Mandible: 3-Year Results. Publication in preparation 2017. 7 Bormann KH, Gellrich NC, Kniha H, Dard M, Wieland M, Gahlert M. Biomechanical evaluation of a microstructured zirconia implant by a removal torque comparison with a standard Ti-SLA implant. *Clin Oral Implants Res*. 2012 Oct;23(10):1210-6. doi: 10.1111/j.1600-0501.2011.02291.x. Epub 2011 Nov 14. 8 Gahlert M, Roehling S, Sprecher CM, Kniha H, Milz S, Bormann K. In vivo performance of zirconia and titanium implants: a histomorphometric study in mini pig maxillae. *Clin Oral Implants Res*. 2012 Mar;23(3):281-6. doi: 10.1111/j.1600-0501.2011.02157.x.. 9 Gahlert M1, Röhling S, Wieland M, Eichhorn S, Küchenhoff H, Kniha H A comparison study of the osseointegration of zirconia and titanium dental implants. A biomechanical evaluation in the maxilla of pigs *Clin Implant Dent Relat Res*. 2010 Dec;12(4):297-305. Doi: 10.1111/j.1708-8208.2009.00168.x. 10 Roehling S, Astasov-Frauenhoffer M, Hauser-Gerspach, Braissant O, Woelfler H, et al., In Vitro Biofilm Formation On Titanium And Zirconia Implant Surfaces, *J Periodontol*. 2016 Oct 7:1-16. [Epub ahead of print] DOI: 10.1902/jop.2016.160245

International Headquarters

Institut Straumann AG
Peter Merian-Weg 12
CH-4002 Basel, Switzerland
Phone +41 (0)61 965 11 11
Fax +41 (0)61 965 11 01
www.straumann.com