

# digital solutions

## AN ALL-IN-ONE SOLUTION

Starting from the impression with an intraoral scanner, benefit from a **fully digital workflow**.

- + A complete range of services
- + A complete laboratory package:  
printed model, antagonist, gingival mask and articulation system.
- + One high quality CAD-CAM **Simeda**® prosthesis

Non-contractual picture

# CAMPUS



## Training center in implantology

- 1 operating theatre, 1 dental prosthesis laboratory
- 800 dental professionals trained each year
- Conferences, live surgeries, workshops
- At the foot of the Mont-Blanc,  
between Chamonix and Geneva

C 194\_GB 2023-11

Photo credits : Anthogyr, Godefroy de Maupeou, Getty images .  
All rights reserved, actual products may vary.



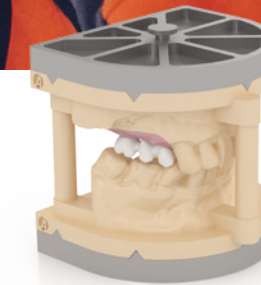
**ANTHOGYR SA**  
8, um Miercherberg P.B 184,  
L-7526 Mersch - Luxembourg  
[www.anthogyr.com](http://www.anthogyr.com)

**Anthogyr**  
A Straumann Group Brand

# DigitALL® All inclusive



## Digital workflow All Inclusive



**Anthogyr**  
A Straumann Group Brand

**Anthogyr**

Discover our



DigitALL®  
All inclusive

**simeda**®  
BY ANTHOGYR

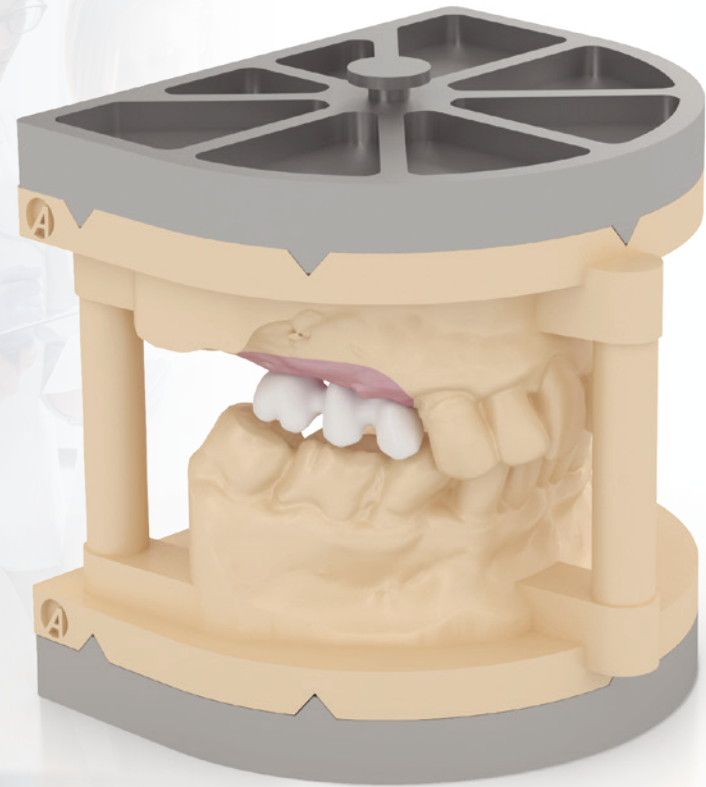
## WHY A DIGITAL WORKFLOW

- + **Satisfied patients!**  
Easy impression taking, an aesthetic result.
- + **An enhancing image**  
Digital communication of treatment plans.
- + **Efficiency**  
Digital storage of trackable and reproducible work.
- + **Smooth exchanges**  
Collaborative flow for practitioners and technicians.

Dental lab pack



## Benefit from an “all inclusive” service



### A PRINTED MODEL PACK OF EXCELLENCE

- + **High precision** manufacturing with industrial quality 3D printers.
- + **Integrated implant platform** for easier handling.
- + Removable gingival mask, accurate representation of the gum profile.
- + Antagonist.
- + A choice of articulation systems, plastic occluder or design for split-cast plates to assemble on the articulator.

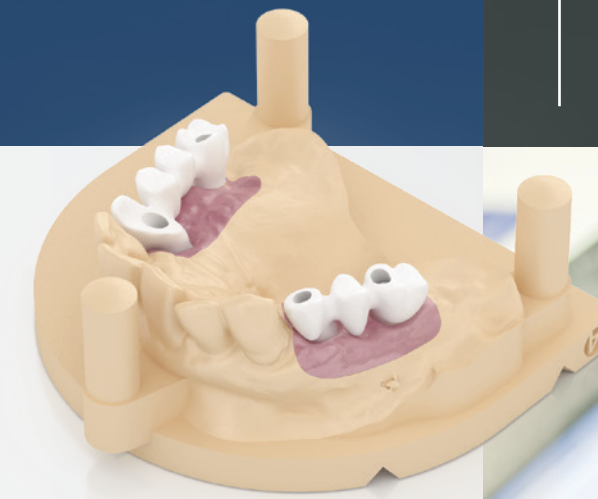


### A high precision **Simeda**® prosthesis

- Industrial expertise, from CAD design to the final check.
- Selection of high quality materials: resistance and perfect aesthetics results.
- Supplied with its own fixation screw for printed model.
- Serenity® guarantee program.

### A simple digital impression protocol

- A complete range of **precise** and **radiopaque** digital transfers.



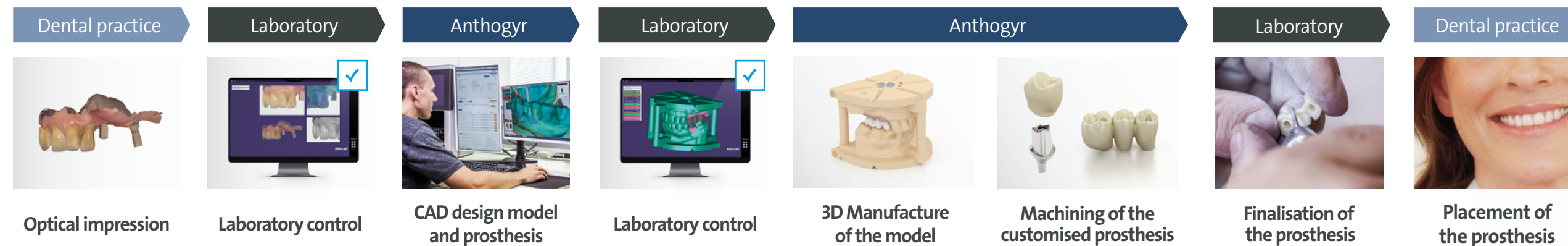
Digital transfers



Analogs

FlexiBase®

## A COLLABORATIVE WORKFLOW LAUNCHED FROM AN OPTICAL IMPRESSION



Whether you wish to machine the prosthesis in-house or benefit from **Anthogyr's industrial expertise** with a **Simeda**® prosthesis, complete the digital workflow of your choice with a full range for **Axiom Multi Level**®:

- Digital transfers for intraoral scanners.
- Printed model analogs.
- **FlexiBase**® bases for restorations machined in the laboratory.
- CAD-CAM **Simeda**® prosthesis covered by the **Serenity**® guarantee programme.

