

## INSTALLATION GUIDE FOR OPFLEX403 AND OPFLEX503 LIBRARY

### Exocad® and Imetric®

File name: "Anthogyr-Labside-OPFLEX403\_503-SA-DT-PA-Exocad-Imetric.zip"

Exocad® minimum needed version: compatible to all open Exocad® versions.

Imetric® minimum needed version: version 5 or higher.

#### **WARNING !**

**Use of external implant library in Zirkonzahn software will destroy the Zirkonzahn license.**

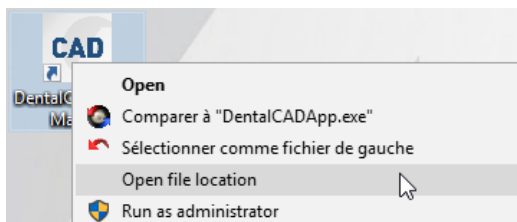
To use an external library in your Zirkonzahn system, please contact your Zirkonzahn dealer.

If you are updating the "Labside" library, be sure to remove all files from the "Flexibase" library before.

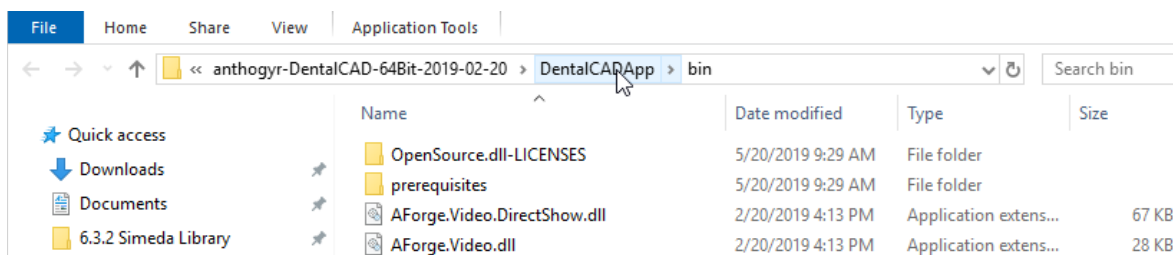
## Exocad®

#### **Installation:**

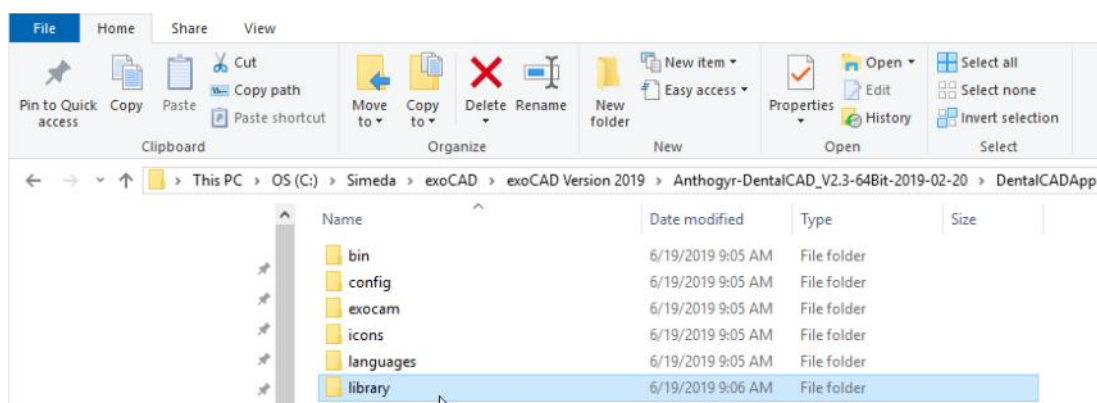
→ To find the Exocad® location on your PC, do a right click on the dentalCADApp icon and select "open file location".



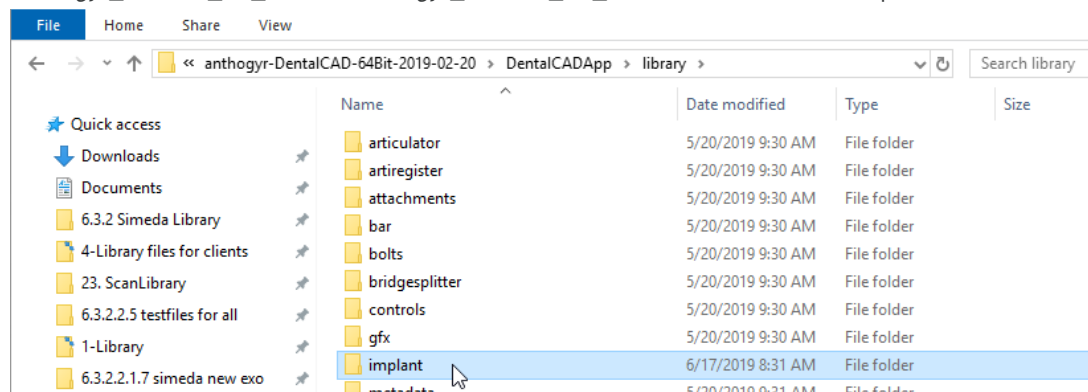
→ Open the "DentalCADApp" folder:



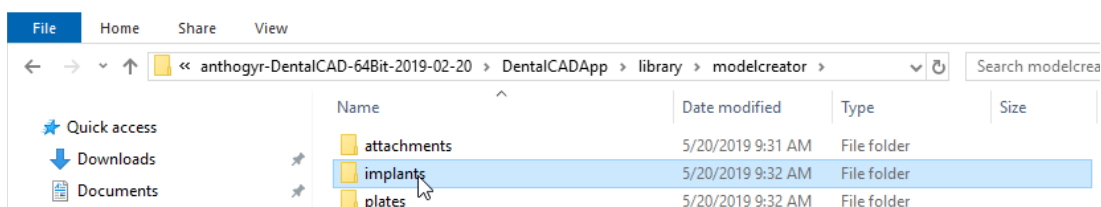
→ Open the "library folder":



→ Paste the *Anthogyr\_Labside\_SA\_CN* and *Anthogyr\_Labside\_DT\_CN* folders inside the “implant” folder.



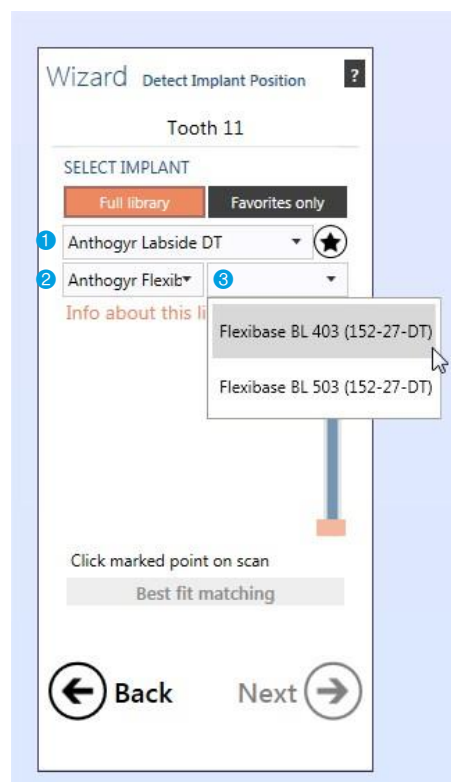
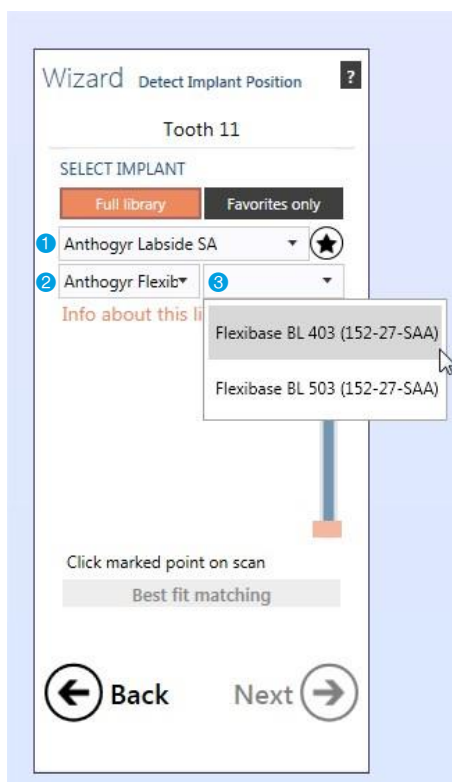
→ Paste the *Anthogyr\_Labside\_MB* folder in the “\modelcreator\implants” folder.



## Use:

→ Set up the case in the DentalDB as described in the Exocad® manual and start the scan.

→ After scanning, open the CAD module and import all the different scans, then select the needed titanium base files:



- ① System
- ② Connection group
- ③ Connection type

→ After that proceed as usual.

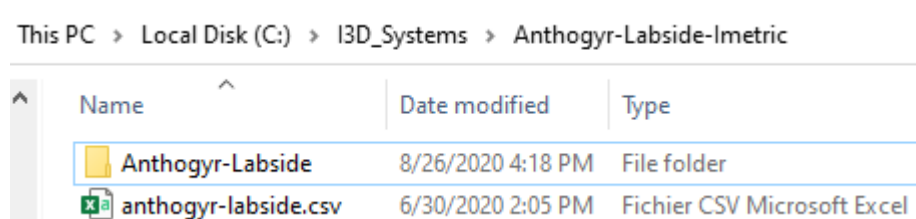
## IMETRIC®

### Installation:

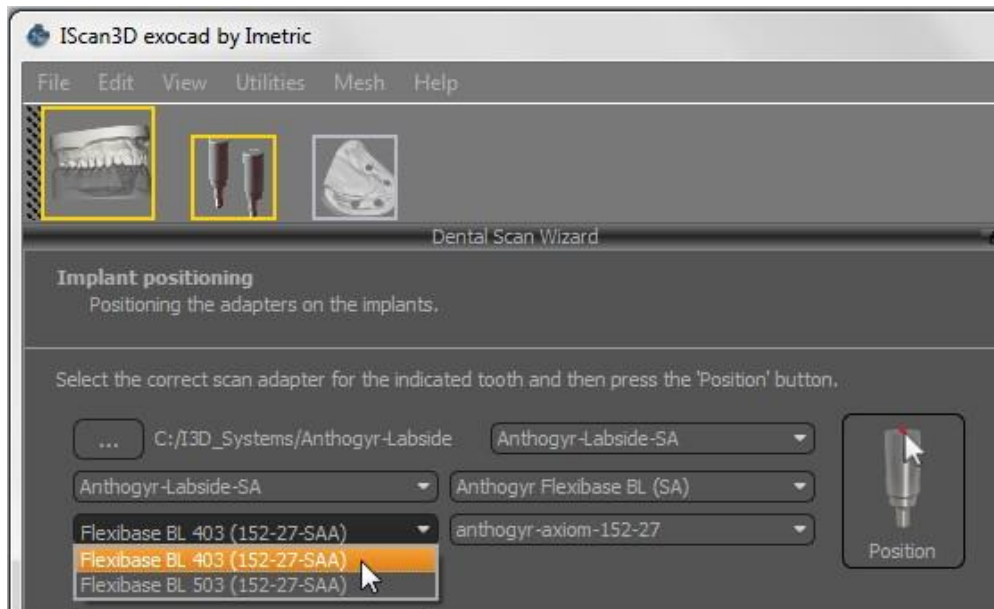
- Unzip the file "Anthogyr-Labside-OPFLEX403\_503-SA-DT-PA-*Imetric*.zip"
- Copy the *Anthogyr\_Labside\_Imetric* folder and paste it to : C:\I3D\_systems.

### Use:

- Set up the job in the DentalDB as described in the Exocad® manual and start the imetric scan.
- When you need to select the implant library, go to the "C:\I3D\_Systems/Anthogyr-Labside" folder and click on the "Anthogyr-OPFLEX403-503.csv" data:



- Then you could select the needed titanium base file:



- Then proceed as usual with the scan.