

For Clinicians

coDiagnostiX®

Planning power at your fingertips



PREDICTABLE



EFFICIENT



SIMPLE

straumanngroup
Digital Solutions

Digital treatment planning: delivering high-quality aesthetic care

In our fast and dynamic world, patients deserve high-quality and aesthetic care with minimal visits. Digital treatment planning is becoming the new standard to help clinicians meet these growing demands, while improving patient engagement. coDiagnostiX®, our state-of-the-art dental treatment planning software, will support you on this journey.



“

In coDiagnostiX, I can put all the data together - from the CT scan of the patient to the STL of the impression, which gives me the opportunity to study the patient in an overall situation and provide my patient with a better treatment planning.

Dott. Stefano Storelli, Italy

”

Give your patients a reason to smile



PREDICTABLE OUTCOMES

Protect critical anatomical structures and ensure predictable outcomes for your patients through high-quality digital treatment planning and guided procedures.



REDUCED TREATMENT TIME

coDiagnostiX® makes the most out of immediate procedures, allowing for faster time to teeth and less appointments for your patients.



ENHANCED PATIENT EXPERIENCE

Satisfy your patients' growing demands for aesthetic results with prosthetically driven planning and protocols.



Experience the difference

coDiagnostiX®. Efficiency to help maximize performance.



PEACE OF MIND

Plan your treatment upfront with coDiagnostiX and work with highly precise surgical guides, reducing stress during surgery.



LESS CHAIR TIME

Save time and increase your efficiency by facilitating shorter surgery times, enabled by guided protocols.



POWERFUL VISUALIZATION

Make better treatment decisions with the support of a detailed visualization of the patient case and easily accessible anatomical data.



IMPROVED PATIENT ENGAGEMENT

Discuss and explain the planned treatment to your patient showing a visualization of the treatment plan.



SEAMLESS COLLABORATION

Improve the aesthetic outcome by sharing and discussing the treatment plan with your referring clinician, peers or your laboratory.



Planning power at your fingertips

From highly accurate guides to outstanding collaboration features: discover the whole powerful set of functions that coDiagnostiX® has to offer.

PREDICTABILITY

Achieve predictable outcomes even with complex cases through prosthetically driven planning and the design of highly precise surgical guides.

SIMPLICITY

Start planning your first cases quickly with our award-winning EASY mode user interface.



reddot winner 2020
interface design



EFFICIENCY

coDiagnostiX® efficiently supports your workflow for edentulous cases by facilitating stackable guides and an unlimited import of STL files.

ALL-IN-ONE SOLUTION

Benefit from one software that supports the full range of clinical indications, including guide design for implantation, endodontic, bone reduction, apicoectomy, sinus-lift or stackable guides. No need for an additional software.



OPEN SYSTEM

Plan any implant system registered in your country. With the integrated and validated library, elements from most of the major manufacturers are easily at hand.

COLLABORATION

Share treatment plans and guide designs across your network with caseXchange™ for cloud-based case collaboration. Synchronize your treatment plans and prosthetic designs with Synergy – a real-time CAD integration between coDiagnostiX® and CARES Visual.

AESTHETIC OUTCOME

Visualize restorative outcomes pre-operatively to empower decision making, manage emergence profiles and select optimal prosthetic components.

VISUALIZATION

Improve your clinical decision making with the support of 2D and 3D visualization of the patient data.



codiagnostix.com/demo

Visit our website or
download a demo version.



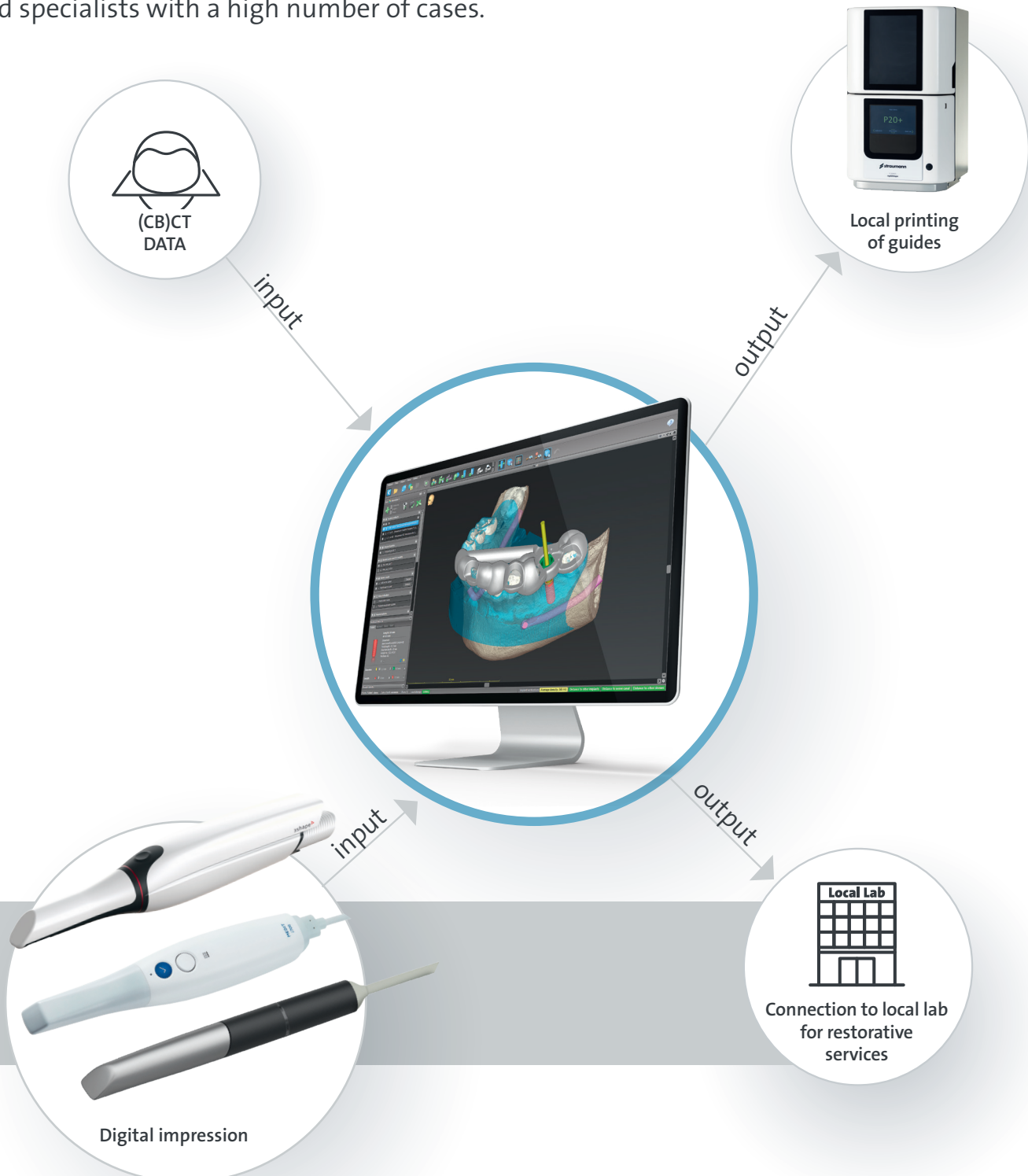


Connectivity

Inhouse workflow

coDiagnostics® smartly adapts to your individual needs supporting both inhouse and outsourced procedures letting you choose your favorite approach.

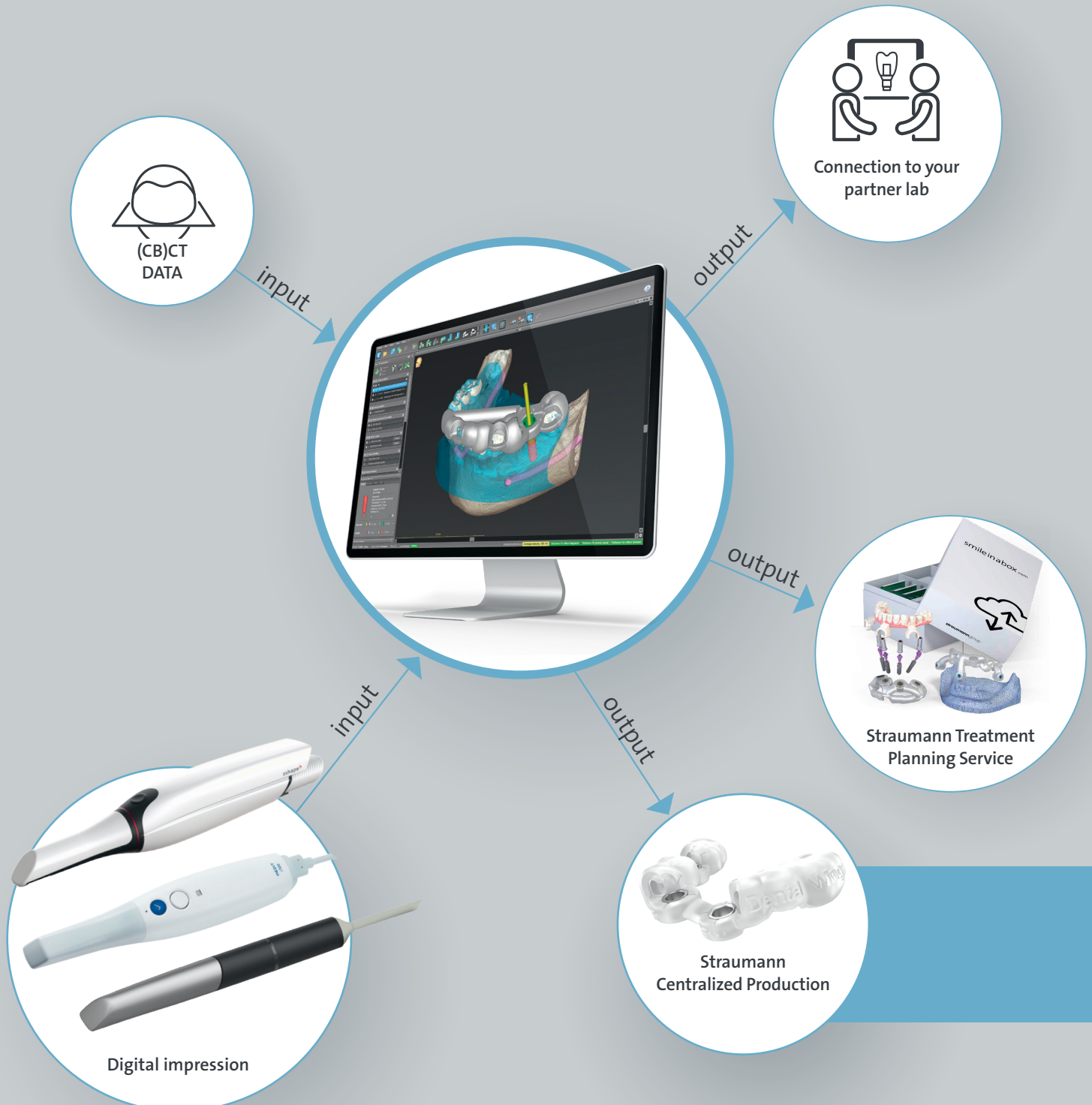
Our inhouse workflow gives you the full control over all the work steps, from data import through to treatment planning, guide design and guide production. Ideal for tech-savvy users and specialists with a high number of cases.



Connectivity

Outsourced workflow

You want to start quickly with your first cases or grow your practice with limited financial investment? Benefit from a seamless connection to your partner lab or access to Straumann trusted services and the flexibility to outsource whenever you need and what you need - from single cases and selected tasks up to full service provision.



Visualize Outcomes with AI Powered Planning

Start planning without messy data prep. Enjoy automated segmentation, STL matching and more with coDiagnostics® AI Assistant

EASY VISUALIZATION OF 3D PATIENT DATA

AI Assistant tackles complex data preparation so you can spend time doing what you do best –designing and manufacturing surgical guides.

AUTOMATED SEGMENTATION

AI Assistant cleans and segments your DICOM data so you can easily plan in 3D.

AUTOMATED STL MATCHING

AI Assistant merges your model scans to the DICOM data set for ease of guide design.

AUTOMATED NERVE & PANORAMIC CURVE DETECTION

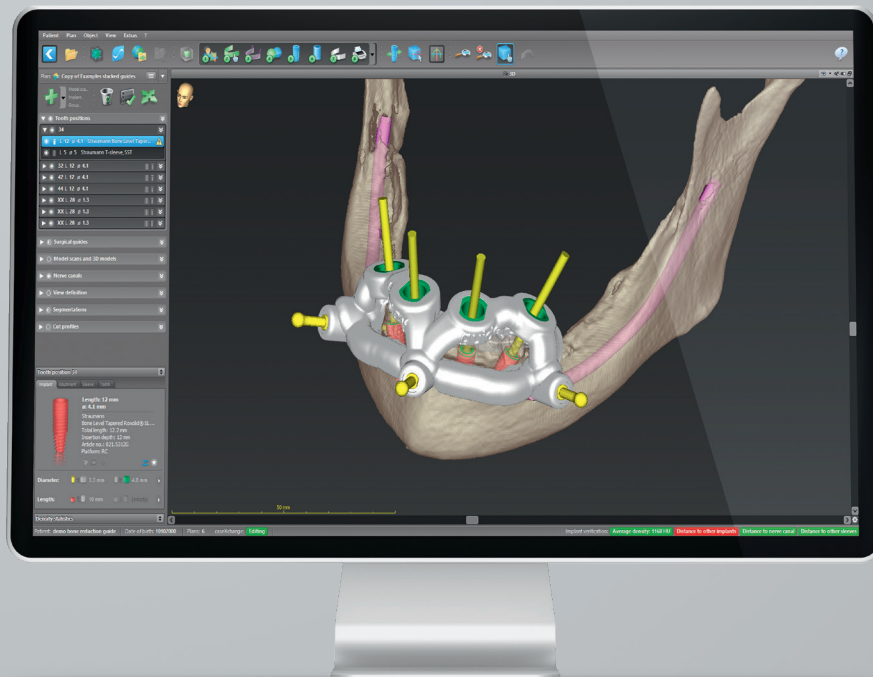
AI Assistant auto-detects nerve canals and panoramic curves so you can plan with confidence.



Still not sure? We got you!

Want to grow your practice? Digital dentistry can help you set the stage for the future of your work.

Contact your local Straumann Group representative to schedule a live demo and learn more about our Digital Solutions.



coDiagnostiX.com



Straumann North American Headquartersifu.straumann.com

Straumann USA, LLC

60 Minuteman Road

Andover, MA 01810

Phone 800/448 8168 (US) • 800/363 4024 (CA)

Fax 978/747 2490

www.straumann.us • www.straumann.ca
