

# How to Scan the Upper Jaw and Mark the Tooth.

When you have scanned the lower jaw, move on to scanning the upper jaw. After scanning, you will be prompted to mark the tooth or teeth that you are intending to work on:

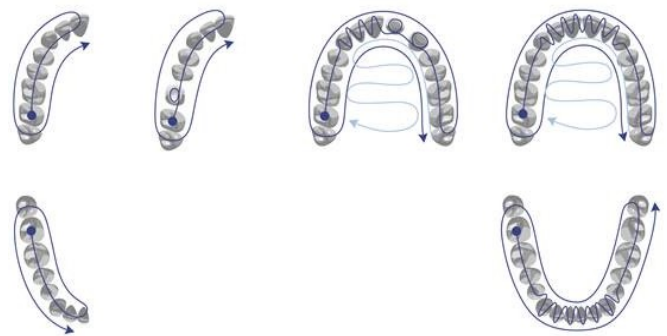
**Step 1.** Follow the official 3Shape scan strategy for the upper jaw.

**Step 2.** When you are satisfied with the scan, click **Trim** and use the tool to remove unnecessary parts of the scan.

Use the **All patches** button to remove any outlying patches that you do not need.

**Step 3.** After you have scanned the upper jaw, mark the tooth, which is the focus of your attention. There are two ways of doing that:

Press on the **Mark tooth** button and then on the tooth you want to mark. You should see a number on the surface of the tooth, which means that you have marked it successfully.



Trim



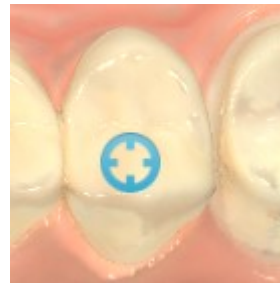
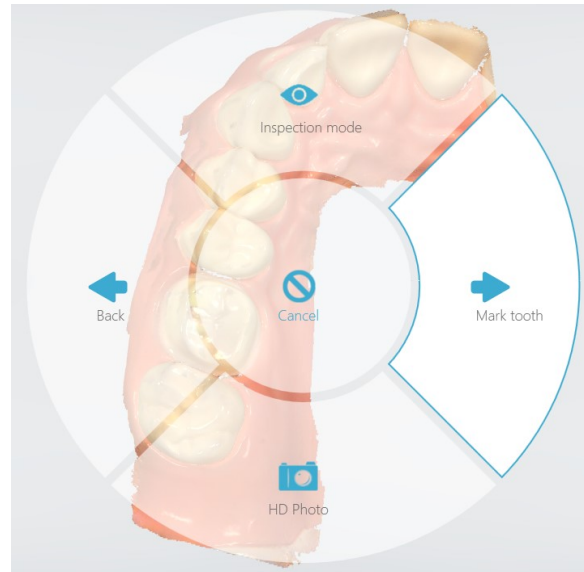
All patches



Mark tooth

Alternatively, you can use the navigation wheel.

Press on the scanner button until the navigation wheel appears and choose **Mark tooth**. Then aim with the blue target on the prepared tooth and press the scanner button once. You should see a number on the surface of the tooth, which means that you have marked it successfully.



**Step 4.** While using any of the available methods of marking the tooth, software may inform you that there are areas of the scan where not enough data was captured. It will also show you these areas in color on the scan.

In order to scan these areas again, simply start scanning and focus on those areas indicated by the software.

