

Calibration Wizard



Revision 1 (2021.06)

Contents

1	Introduction and Overview	3
1.1	Intended Use	3
1.2	Compatibility	3
1.3	System Requirements	3
1.4	Installation	4
2	User Interface	8
2.1	Title Bar	8
2.2	Program Area	8
3	Scanner Calibration	9
3.1	Calibration Procedure of Scanner	9
3.2	How to Calibrate the Scanner	10
3.2.1	Scanner Calibration	10

1 Introduction and Overview

1.1 Intended Use

Medit Calibration Wizard allows you to calibrate your Medit 3D intraoral scanners, thus managing the scanning performance and the reliability of the acquired data.

1.2 Compatibility

The Calibration Wizard can be used to calibrate the following models:

- i500
- i700

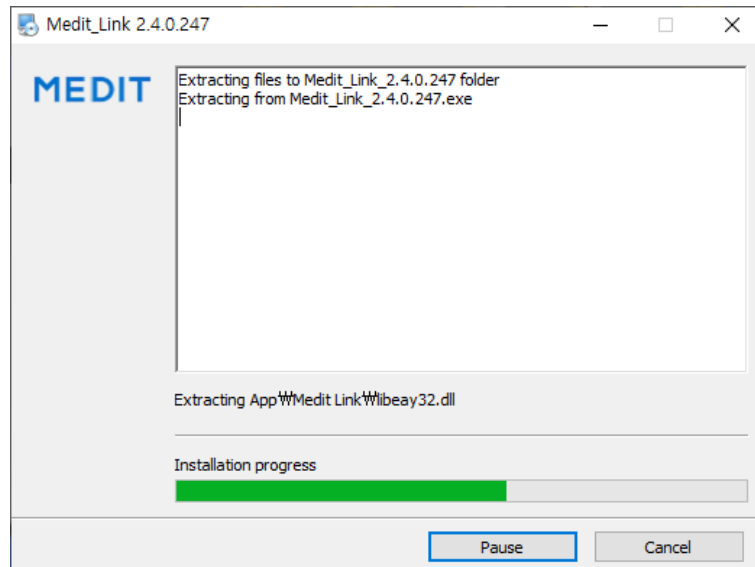
1.3 System Requirements

	Laptop	Desktop
CPU	Intel Core i7-10750H AMD Ryzen 7 4800H/5800H	Intel Core i7-10700K AMD Ryzen 7 5800X
RAM	32 GB	
Graphics	NVIDIA GeForce RTX 2070/2080/3070/3080/3090 Above 8 GB (Not Supporting Radeon)	
OS	Windows 10 Pro 64-bit	

1.4 Installation

Medit Calibration Wizard is automatically installed together with Medit Link.

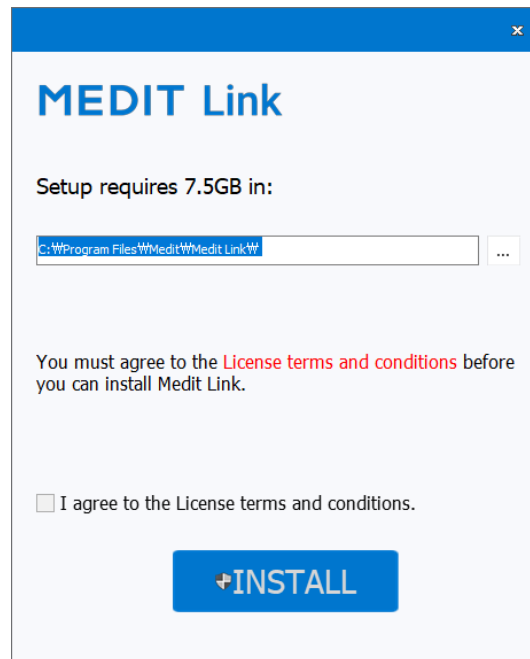
- ① Run "Medit_LinkSetup.exe."



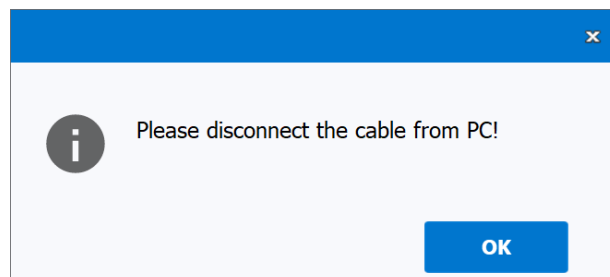
- ② Select the language for installation.



- ③ Select the folder for installation of Medit Link. Read “License Terms and Conditions” carefully, and check the box stating, “I agree to the License Terms & Conditions.” Then, click the “Install” button to proceed to the installation.



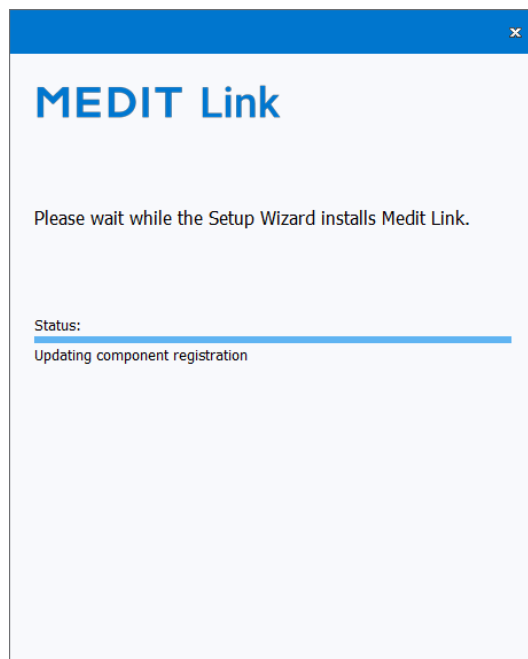
- ④ The installation will not proceed if a scanner is connected to the computer.
- ⑤ Make sure the cable is disconnected from the computer before proceeding to the next step.



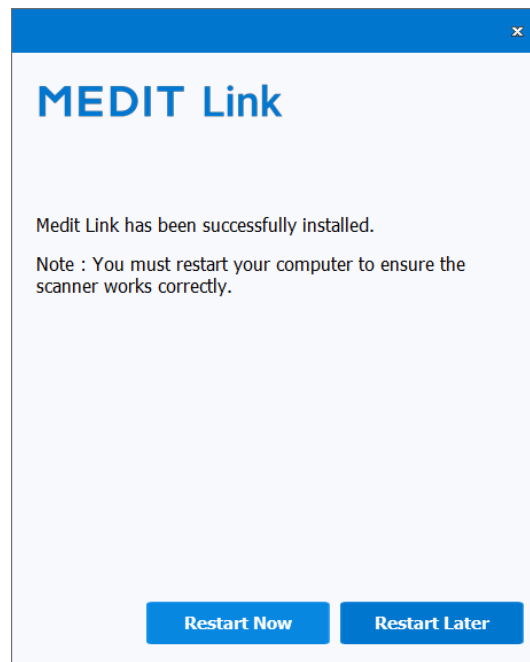
⑥ The installation will continue automatically from this point and may take a few minutes.



⑦ Do not turn off the computer until the installation is complete.

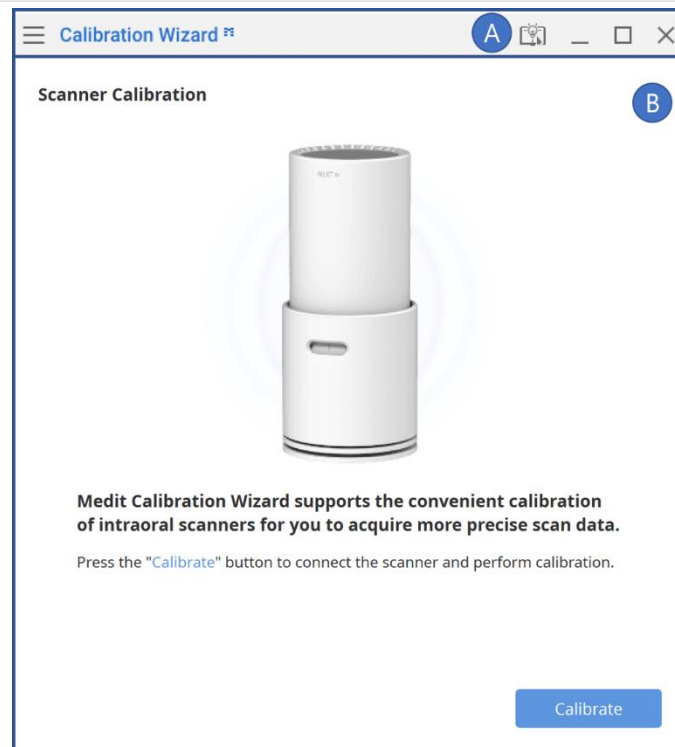


- ⑧ After the installation is complete, restart the computer to use Medit Calibration Wizard from Medit Link.



Note: The scanner may not work without restarting the computer.

2 User Interface



A. Title Bar

B. Program Area

2.1 Title Bar

The Title Bar consists of the following options:

Menu	Includes tools to manage the project and change the settings of the application. It also shows details of the application.
Help Center	Go to the Help Center page. It contains various information about using Medit Calibration Wizard.
Minimize	Minimizes the application.
Exit	Saves the current model and terminates the application.

2.2 Program Area

The program area displays the calibration progress.

3 Scanner Calibration

3.1 Calibration Procedure of Scanner

Calibration must be performed periodically to acquire the precision of the 3D data.

Calibration is required when:

- The quality of 3D data is not good enough or as accurate as previous results.
- Environmental conditions such as temperature have changed.



The Calibration Tool is a delicate component. Do not touch the inside parts directly. Check the physical condition of the tool if calibration is not performed properly. If the Calibration Tool is contaminated, please contact the service provider.



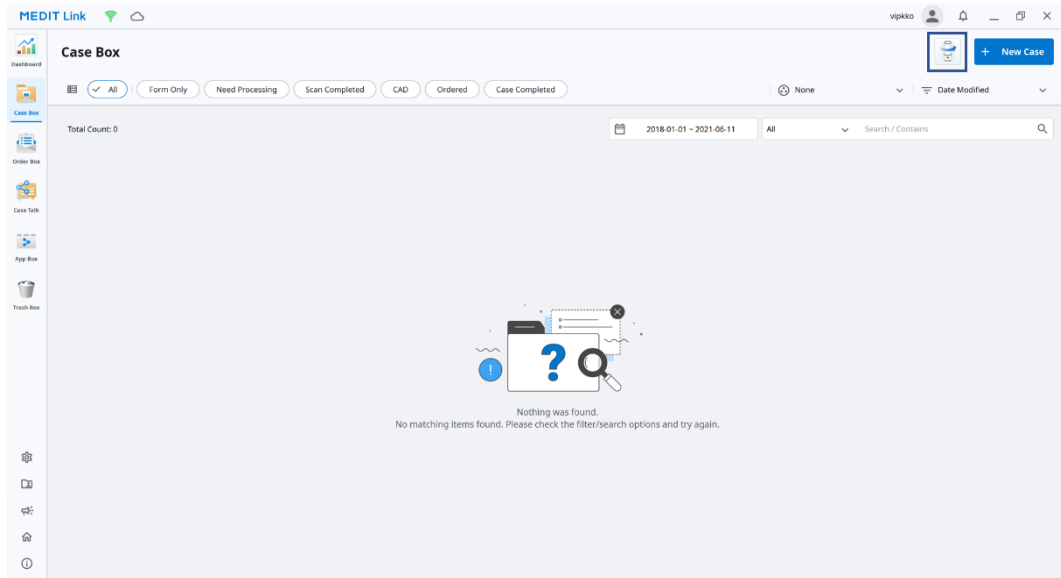
To increase data accuracy, make sure that the temperature of the scanner during calibration is similar to the temperature during scanning. The calibration process includes a pre-heating stage.

3.2 How to Calibrate the Scanner

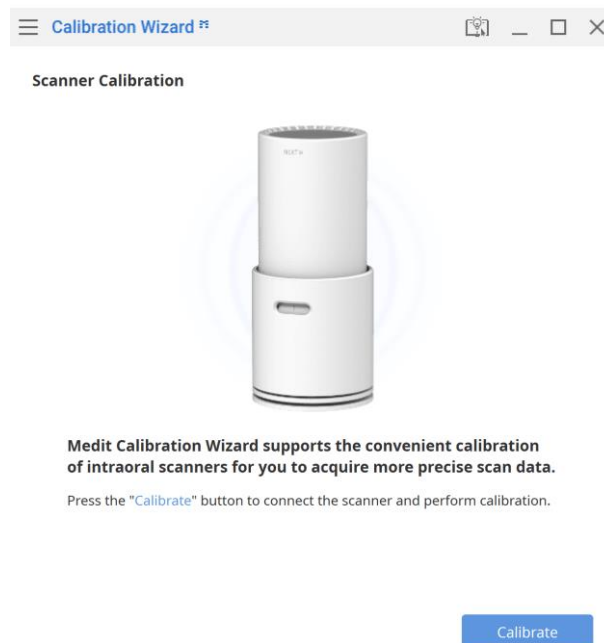
3.2.1 Scanner Calibration

The images below represent the i700. However, Medit Calibration Wizard can be equally used together with the i500.

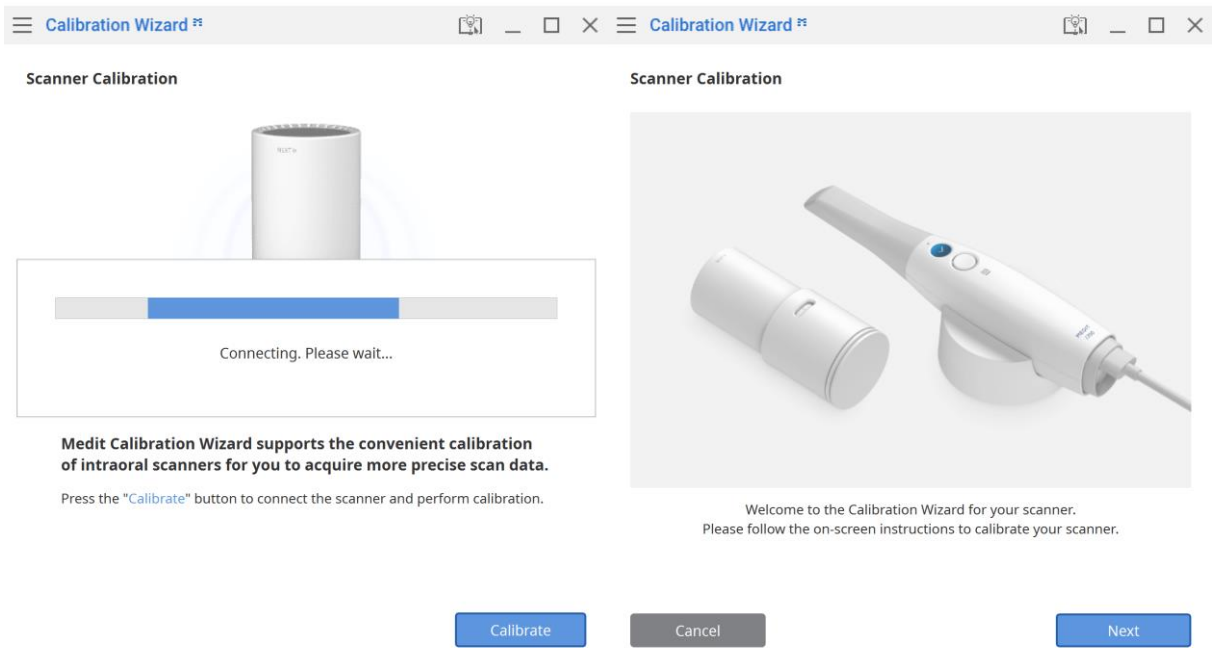
- ① Run Calibration Wizard from Medit Link by clicking the icon as shown on the image below.



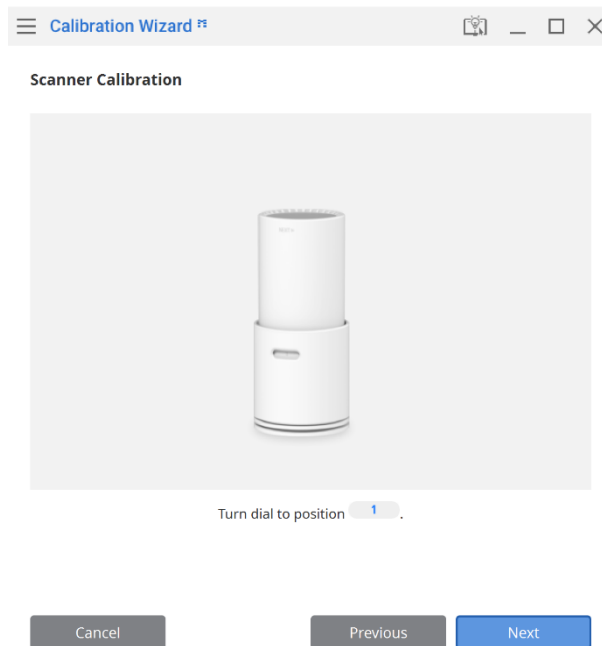
- ② Turn on the scanner, connect it to the PC, and click the "Calibrate" button.



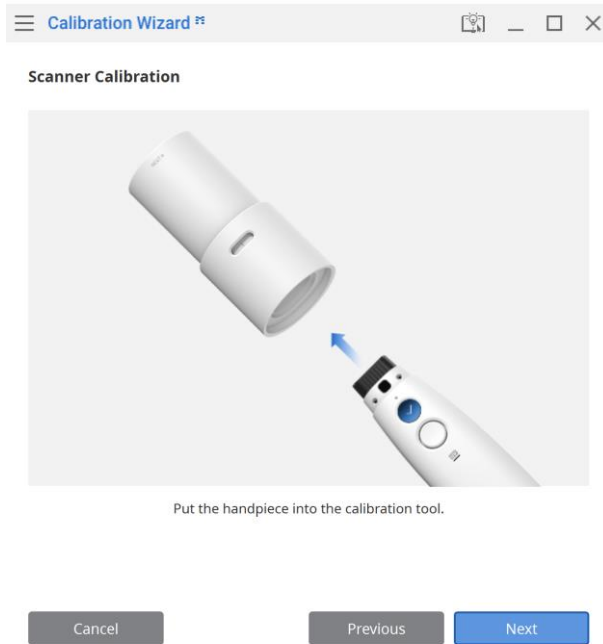
③ The program will connect to the scanner. Once the connection is established, start the calibration process.



④ Turn the dial of the Calibration Tool to position 1.

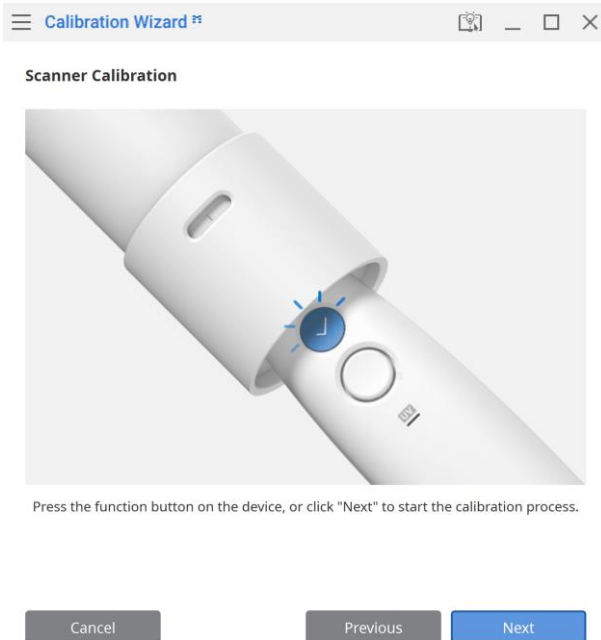


- ⑤ Insert the scanner into the Calibration Tool.

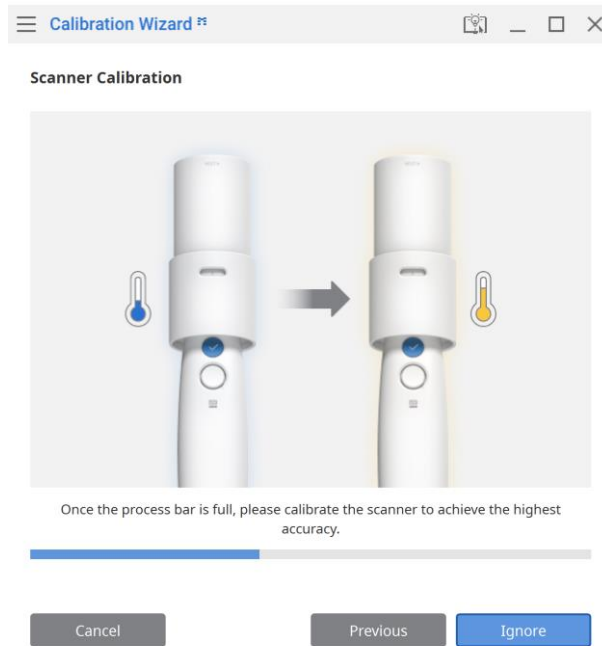


- ⑥ Click "Next" to start the calibration process.

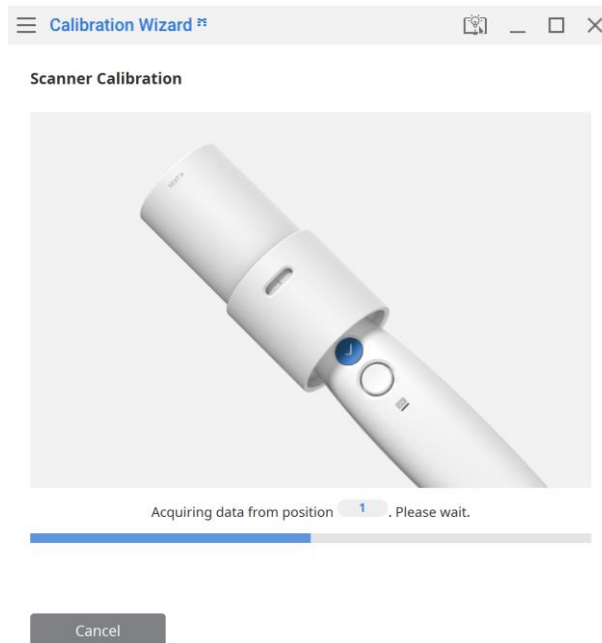
- ⑦ You can move to the next step by clicking the scan button on the scanner or clicking the "Next" button.



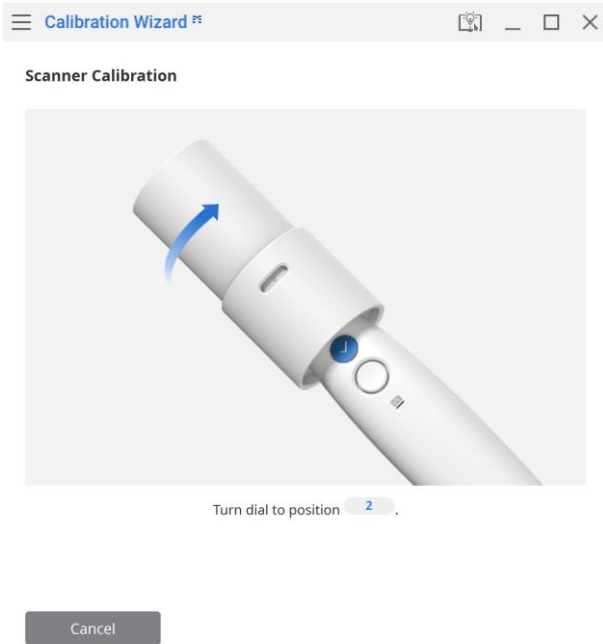
- ⑧ If the scanner's temperature is too low, pre-heating is required to ensure its optimal performance. If the scanner is already sufficiently warmed up, this step is not shown. You can choose to skip this step. However, this may affect the precision of the acquired scan data.



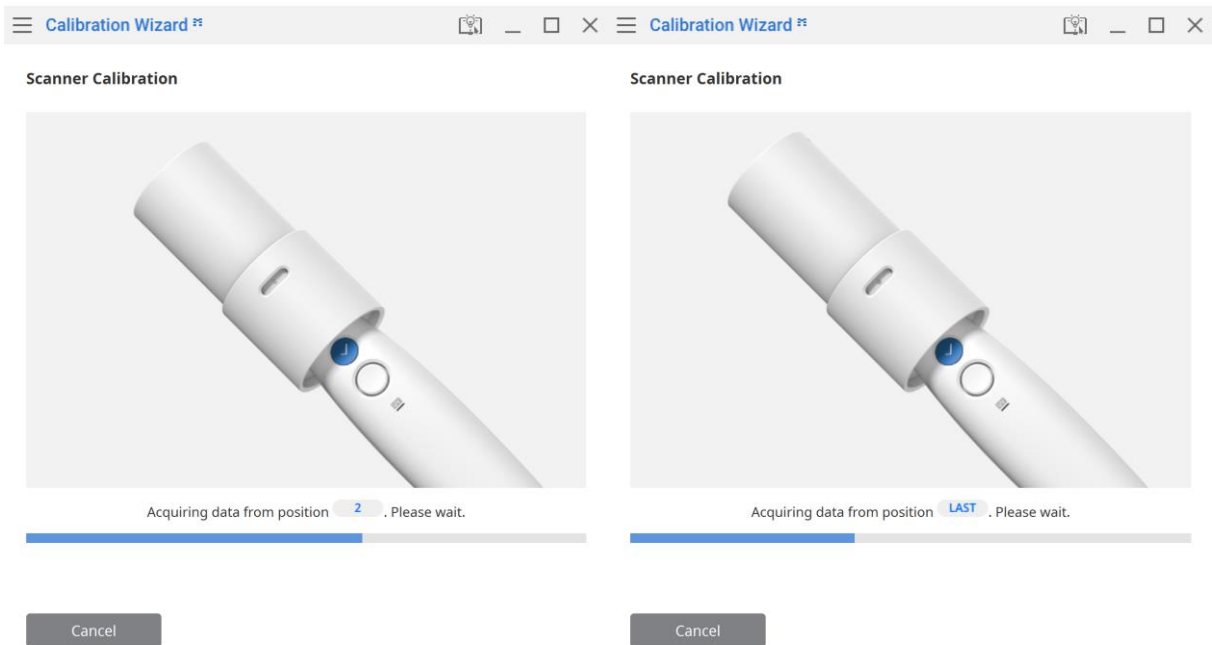
- ⑨ Once the scanner is inserted correctly, the system will acquire the data from the position 1.



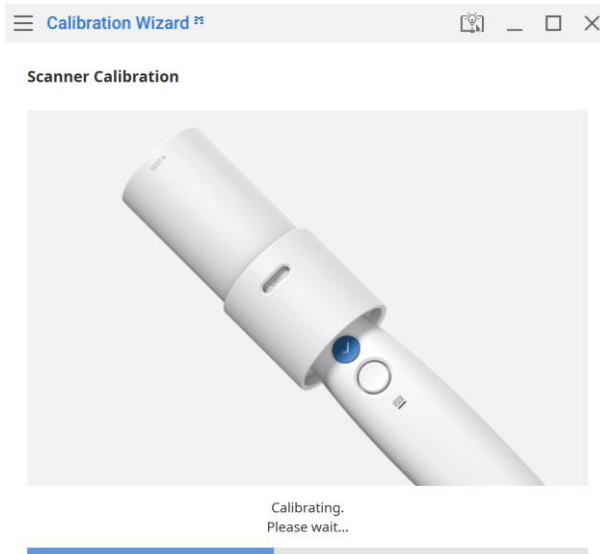
- ⑩ When data acquisition is complete at position **1**, turn the dial to the next position, referencing the direction depicted on the image below.



- ⑪ The data will be acquired from the position **2**. Repeat the above steps for positions **2** - **8** and the **LAST** position.



- ⑫ Acquire data from the **LAST** position and move to the next step.



- ⑬ Once the calibration process is complete, the program will display the results (PASS or FAIL). Click the "Complete" button to close the program.

