

Straumann Group News. AEEDC 2022

Unlocking the potential of people's lives.



DISCOVER INNOVATIONS, CHANGES, AND TRENDS IN ESTHETIC DENTISTRY.

#Excellence in Immediacy
#Edentulous Patients
#Prosthetic Efficiency
#Esthetic Dentistry
#Enablement&Education
#Straumann Group Digital Solutions
#Orthodontics
#Straumann Group Brands

Some products and services may not be available
in all countries. Please contact your country sales
representative for details.

الأسك
AEEDC
DUBAI

straumanngroup

Welcome. Join us on a journey to unlock the potential of people’s lives.

Since our foundation many decades ago, we’ve been inspired to make people’s lives better. Our entrepreneurial spirit and commitment to scientific excellence, has made us a global market leader in esthetic dentistry. We’ve transformed millions of lives. And we’ll transform millions more. Patients and professionals all over the world confirm that improved oral health increases self-confidence. It restores people’s self-esteem and unlocks their life potential. We are proud to be able to make a fundamental difference.

Discover how we translate this bold statement into innovative solutions in oral and dental care, supporting dental professionals worldwide in these challenging times.

This is our contribution to the future of dentistry, and your invitation to bounce back with us.

TABLE OF CONTENT





straumanngroup

Envisioning a world
where oral health
is a source of
confidence



CUSTOMER CENTRIC

To become the most customer focused and innovative oral care company in the world.



LEADER

Entrepreneurial spirit and commitment to scientific excellence. Global market leader in esthetic dentistry.



INNOVATION

Pioneering powerhouse turning ideas into meaningful and disruptive innovation.



CULTURE

A Purpose led, people focused, player-learner, high-performance driven organization.



TRANSFORMING LIVES

More than 60 years inspired to make people's lives better. Transformed millions of lives. Transforming millions more.



Straumann® – A world-leading brand for confidence in esthetic dentistry.



NO. 1 IN GLOBAL IMPLANTOLOGY

The gold standard in evidence-based implant and esthetic dentistry.



INNOVATIVE BY NATURE

Industry benchmark for disruptive innovation backed by scientific evidence.



EDUCATION & SCIENTIFIC NETWORK

Largest global scientific network and total commitment to education in dentistry.



LEGENDARY SWISS ENGINEERING

Swiss premium quality, precision and pioneering innovative technologies.



INTEGRATED DIGITAL PERFORMANCE

Efficient and validated workflows, high-tech dental equipment and premium materials.



TRUSTED SERVICE

Global leader through highest service standards and enabling services focused on customer and patient care.

EXCELLENCE IN IMMEDIACY



Straumann® ImmediaXy™ Taking immediacy to the next level

With ImmediaXy™, Straumann takes immediate treatments to the next level. The Straumann® ImmediaXy™ ecosystem of solutions covers the whole workflow, from data acquisition to restoration, and was designed to enable clinicians to:

- Predictably and confidently perform immediate treatments, even in challenging indications
- Gain time and cost efficiency
- Accelerate revenue generation

This results in improved quality of life for patients and increased growth and efficiency for the dental practice.

Taking immediacy to the next level.

Straumann® ImmediaXy™ builds on innovation at every stage:

- Seamless and flexible digital workflows: chairside, centralized and everything in-between
- Implants and instruments perfected for immediacy
- Highly effective biomaterials to meet any challenge
- Efficient prosthetic options for all indications



END-TO-END

Straumann® ImmediaXy™ covers and seamlessly connects all stages of the workflow: Data Acquisition, Planning&Design, Surgery and Restoration.



CONFIDENCE

Straumann® ImmediaXy™ capitalizes on Straumann's scientific approach, proven expertise and evidence-based solutions.^{1,2}



EFFICIENCY

Straumann® ImmediaXy™ puts operational simplicity and workflow optimization at the core of its solutions, whether digital, surgical or restorative.



COMPREHENSIVE PARTNERSHIP

As a true partner, Straumann offers service, training and practice growth initiatives in combination with excellent products and solutions.



Data
Acquisition

Planning &
Design

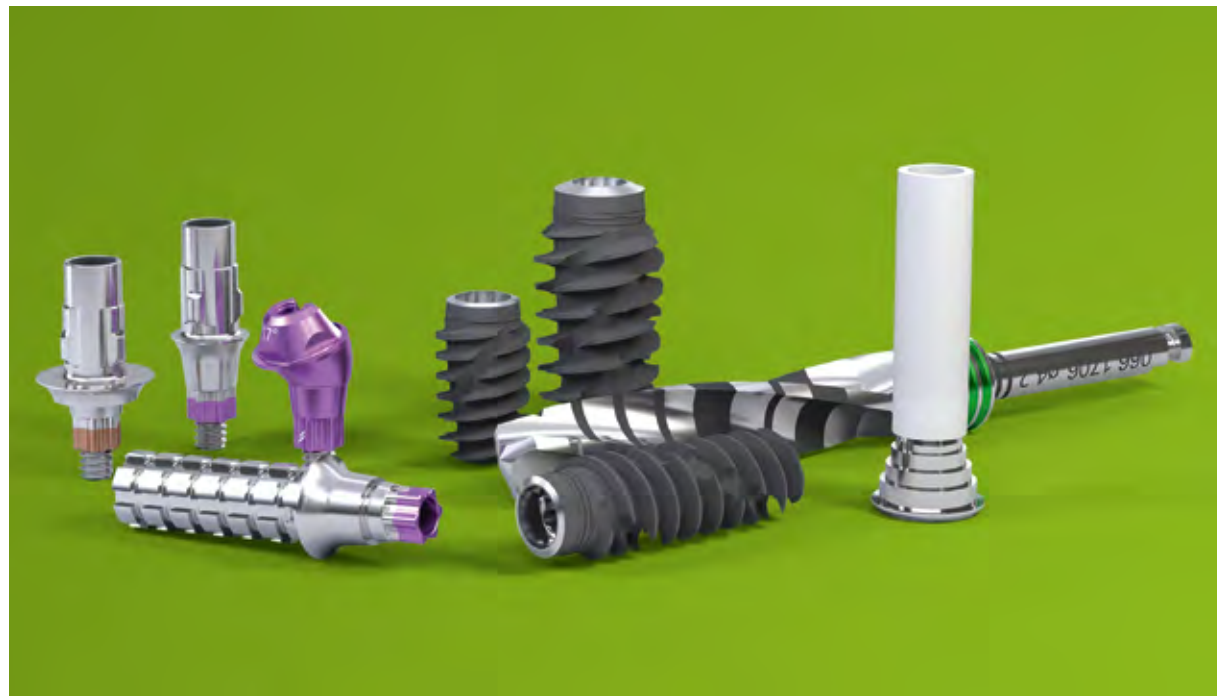
Surgery

Restoration

“Push boundaries predictably and confidently in immediacy.”

Straumann® BLX Implant System

Confidence beyond Immediacy.



BLX combines progressive functional design with our high-performance Roxolid® material and the clinically proven SLActive® surface, designed to provide you with confidence for all clinical situations. Innovations like the VeloDrill™ system, Straumann® Dynamic Bone Management and our Esthetic Ease Concept are aimed at significantly improving surgical and restorative workflows.

Contact your local Straumann representative or visit: www.confidence-in-you.com



DYNAMIC BONE MANAGEMENT

Intelligent implant concept supporting immediate protocols in all bone types.



ESTHETIC EASE CONCEPT

One connection and under-contoured prosthetics to deliver esthetics with ease.



REAL CONFIDENCE

Backed by long-term scientific evidence for the Roxolid® material and SLActive® surface technology.



Discover BLX:
www.straumann.com/blx

Straumann® TLX Implant System

Iconic Tissue Level meets Immediacy.

The design of the Straumann® TLX Implant takes into account key biological principles of hard and soft tissue healing. It is designed to significantly reduce the risk of inflammation and bone resorption as the implant-abutment interface is moved away from the bone.

The Straumann® TLX Implant System perfectly complements our bone-level BLX Implant System. Both systems use one common drill set and TorcFit™ connection for maximum compatibility with minimum investment.

Straumann® TLX has been perfected for immediacy and is an excellent solution for all other indications to suit the dentist's preferred treatment protocol – ranging from immediate to conventional placement and loading.



DESIGNED FOR IMMEDIATE PROTOCOLS

- Fully tapered implant design for optimized primary stability combined with the predictability of Tissue Level Implant
- A narrow implant diameter option, 3.75 mm for all indications



PERI-IMPLANT HEALTH PRESERVATION

- Reduced risk of nesting bacteria
- Optimized cleansability with the connection at the soft-tissue level
- Immediate soft-tissue attachment preservation



SIMPLICITY AND EFFICIENCY

- A one-stage process with restoration at soft-tissue level allows you to use chair time more efficiently
- Ease of restoration even in the posterior region
- Highly efficient treatment protocol thanks to straightforward conventional and digitally integrated workflows



DYNAMIC BONE MANAGEMENT

- Redistribution of native bone and control over insertion torque



REAL CONFIDENCE

- Swiss precision and quality with Roxolid® material and SLActive® surface

Straumann® VeloDrill™ System

High performance. Low temperature.

The Straumann® VeloDrill™ System shortens oral surgery chair time, minimizes heat generation and delivers high drilling stability.

Suitable for all surgical protocols, the system lowers setup cost by maximizing synergy between instrumentation for freehand and guided surgery.

For flexibility and convenience, the VeloDrill™ System is stored in the Straumann® Modular Cassette.



FLEXIBLE

Shared instrumentation for freehand and guided surgery.



FAST

Shorter chair-time with a simplified drilling protocol.



LOW TEMPERATURE DRILLING

Avoids overheating surrounding structure.



Straumann® Modular Cassette

A cassette that grows with you.

For dental professionals who are starting to work with Straumann® implant systems, the Straumann® Modular Cassette is a compact yet customizable cassette for all workflows, designed to blend into your clinic's daily workflow, allowing surgeons and assistants to work together efficiently.

Start small and build up your cassette system over time, depending on your needs.



CUSTOMIZE

Assemble your kit according to your needs.



COLLABORATE

Designed to blend into your daily clinical workflow.



EFFICIENT

Streamline your workflow.



reddot design award
winner 2019

EDENTULOUS PATIENTS



Straumann® Edentulous Solutions
Because we are all unique.

Out of millions of people facing dental problems, there are no two cases the same. Having the right solution for each individual patient is a challenge every clinician faces.

With Straumann® Edentulous Solutions you have a whole portfolio designed to meet expectations of different patient groups and treat more patients.

Straumann® Edentulous Solutions

Patient-centric approach.

Out of millions of people facing dental problems, there are no two cases the same. Having the right solution for each individual patient is a challenge every clinician faces.

With Straumann® Edentulous Solutions you have a whole portfolio designed to meet expectations of different patient groups and treat more patients.

STRAUMANN® REMOVABLE EDENTULOUS SOLUTIONS



Straumann® Mini Implant System



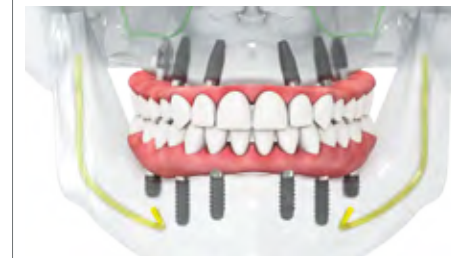
Straumann® Novaloc® Retentive System



STRAUMANN® FIXED EDENTULOUS SOLUTIONS



Straumann® Pro Arch with
BLT and BLX systems



Straumann® TL and BL implant systems



Straumann® Zygomatic Implants
combined with BLX



Straumann® Mini Implants

Mini Implant.

Maximum trust.

Smiling, laughing and eating naturally is a quality of life every edentulous patient would love to maintain.

Now you can provide edentulous patients presenting reduced horizontal bone availability with a less invasive*, immediate removable fixation of their overdenture.

You and your patients can rely on a trusted brand, premium quality and long-term scientific evidence.

*If GBR can be avoided



SLA®

SLA® – LONG-TERM SCIENTIFIC EVIDENCE

- High and consistent survival rates between 95.1% and 98.8% documented by different studies after 5- and 10-year follow-up.³⁻⁹
- Very low prevalence of peri-implantitis (1.8%) over the 10-year follow-up period.⁴

Roxolid®



ROXOLID® – PROVEN QUALITY

- Higher mechanical strength compared to titanium.¹
- The successful use of Roxolid® has been documented in numerous clinical trials with up to 5-year follow-ups.²



OPTILOC® – DURABILITY AND EFFICIENCY

- Reduced maintenance, excellent resistance to wear, space-saving design.



Contact your local Straumann representative or visit www.straumann.com/mini-implants.

Straumann® Novaloc®

A reliable connection that endures.

When durability and endurance count.

There are moments in life when you want a connection to be extremely reliable. Until now, hybrid denture attachment systems may have reached their limit in challenging implant situations. Now there's Novaloc®.

Straumann® Novaloc® for dental professionals, who want to offer edentulous patients a long-lasting, yet cost efficient removable restoration to give them back quality of life.



HIGH DURABILITY

Combination of ADLC abutment coating and PEEK retention inserts designed to resist wear for long-term performance of the prosthetic fixation and therefore minimized maintenance.



HIGH FLEXIBILITY

Situations with high implant divergences can be restored thanks to the Straumann® Novaloc® matrix design and to the Straumann® Novaloc® angulated abutments.



PATIENT COMFORT

The Straumann® Novaloc® Retentive System is designed for convenient insertion and removal of the prosthesis and for optimal adjustment of the denture retention according to patient's needs.



QUALITY OF LIFE

An implant supported removable denture is a cost-efficient implantable solution that can bring back quality of life to edentulous patients by improving comfort, function, esthetics, speech and self-esteem.

The Straumann® Novaloc® Retentive System is engineered for low maintenance and for high patient comfort. It offers excellent wear resistance for a durable high attachment performance. The angled abutments allow additional compensation of divergence between implants, providing high prosthetic flexibility.



Discover more: www.straumann.com/novaloc





Straumann® Pro Arch Tailored to fit. Designed to last.

Straumann® Pro Arch offers different treatment options for implant-borne fixed full-arch restorations. Help your patients regain lasting quality of life.

Proven and predictable

Results from retrospective study Straumann® Pro Arch 99.7% of 440 arches were loaded at the day of surgery. The overall implant survival rate was 98.1% after a median follow-up time of 1,5 years.¹⁰



TREATMENT OPTIONS

Variety of treatment options for specific indications and different patient needs.^{11, 12}

IMMEDIATE LOADING

Straumann® BLT and BLX implants designed for reliable primary stability.

REDUCED INVASIVENESS WITH ROXOLID®

Preserves bone, if bone grafting can be avoided, and allows more treatment options with narrow and short implants.^{13, 14}

SLACTIVE® FOR COMPROMISED PATIENTS

Peace of mind even in challenging situations.¹⁵⁻²⁰

RESTORATIVE FLEXIBILITY

Prosthetic portfolio addresses patient's esthetic expectations within their financial resources.

PRACTICE GROWTH

Practice development and patient communication tools support your practice growth.



Discover more: www.straumann.com/proarch

Straumann® BL Prosthetics

Continuous improvements and portfolio completions.

Listening to your feedback has inspired us to take the Screw-retained Abutments (SRA) portfolio to the next level, and to add new options to our BL prosthetics offering.

Users especially value SRAs as part of immediate loading protocols in Straumann® Pro Arch. However, their versatility combined with a broad range of accessories also makes them an attractive solution for bridges and crowns.



Enhanced user experience and peace of mind:

- Straight Screw-retained abutments: New one-piece design
- Angled Screw-retained abutments: New edge-free founded design

New options to optimally match your workflow:

- New SRA protective caps and temporary copings
- Additional BL/BLT impression post for implant level impression, non-engaging, to facilitate the construction of implant-level superstructures



Straumann® Zygomatic Implant System

Designed by experts with the patient in mind.

The Straumann® Zygomatic Implant System provides an immediate, predictable fixed solution for edentulous and patients with terminal dentition.^{21,22,24}

Our unique implant designs and straight-forward prosthetic concept provide versatile treatment options with immediate protocols and predictable fixed solutions, even in the most demanding clinical situations. The Straumann® Zygomatic Implant System helps you to tailor the solution to your patients anatomy types and bone deficits.²⁷

The Straumann® Zygomatic Implant System completes the Straumann edentulous portfolio with a premium solution so that you have all the tools to treat full arch indications from one source.

FROM EXPERTS FOR EXPERTS

Bringing experts together to provide a treatment you can trust in.

IMMEDIATE LOADING^{21,22,25}

Provides primary stability and allows immediate loading.

ANATOMICALLY BASED DESIGNS

Two designs with a unique combination of features to respect patients' anatomical structures.²⁶

STRAIGHT- FORWARD, VERSATILE PROSTHETICS²³

Versatile prosthetic portfolio with a single implant connection reduces complexity; compatible with Straumann® Edentulous Solutions.

PROSTHETIC EFFICIENCY

Straumann® Prosthetic Solutions
Performance. Partnership. Perfection.

For labs and dental professionals alike, Straumann stands for partnership in prosthetic efficiency. The Straumann® Prosthetic Solutions with integrated digital workflows provide a complete portfolio of proven systems designed to cover all indications, serve patients' needs and support professional preferences.

Straumann® Angled Solutions

Flexibility and precision for a great performance.

What makes a great performance?

Expand your options to leverage the quality of Straumann® Screw-retained restorations. With flexibility and precision from a different angle.



Flexibility sets the stage for a great performance. The Angled Solutions combine angled screw-channels and a best-in-class self-retaining screwdriver. They offer treatment options for a wide variety of indications in the anterior and posterior zone and give the option for either a conventional or digital design.

Precision and attention to detail make the difference. We have refined the angled screw-channel of the restoration to help achieve the best esthetic and functional outcome. No matter the implant, the screw-channel can be tilted up to 25° in all directions. Yet its diameter has been designed to be as small as possible to leave more space for a restoration. The proven Straumann® conical screw connection and insertion torque of 35 Ncm provide strong retentive power.



EASY TO USE

Straight-forward workflow, easy handling.



ESTHETIC

Up to 25° of screw-channel angulation. Small screw-channel diameter.



FLEXIBLE

All indications, platforms, digital and conventional.



ORIGINAL

Leverage the precise fit and the quality of the original Straumann® connection.



Discover Straumann® Variobase® for Crown AS:
www.straumann.com/variobase-as

Straumann® CARES® Implant Prosthetics

Ultimate restorative flexibility.

With the CARES® workflow, you have access to a comprehensive portfolio of customized implant prosthetics for multiple brands, through a common digital workflow.

Benefit from decades of research, development and experience that Straumann® and its partner companies, such as Createch, a pioneer in the field of screw retained bars and bridges, have built into their innovative products and solutions.



PERFORMANCE

Reached through best-in-class digital equipment, technologies, materials, services and know-how.



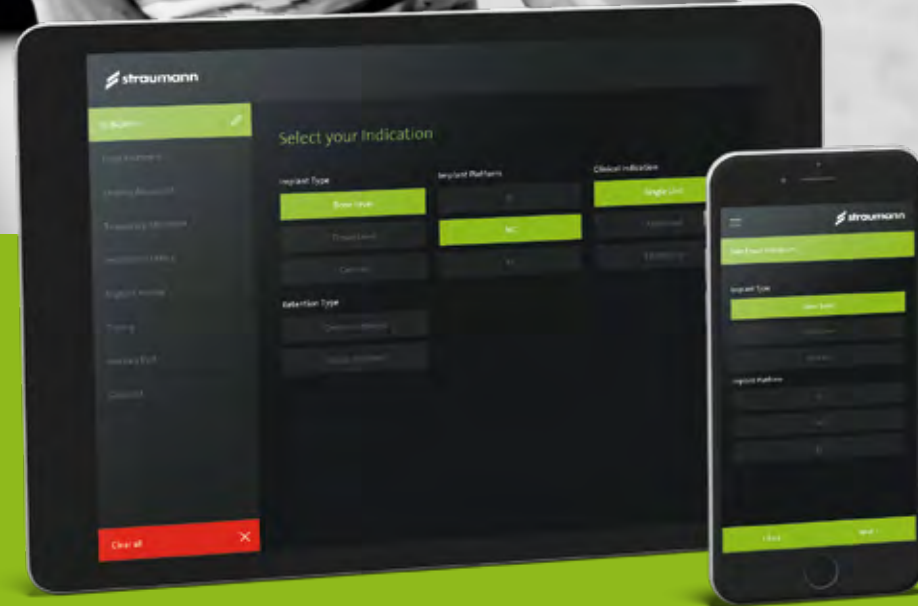
FLEXIBILITY

A comprehensive portfolio of restorative options and a variety of workflows.



SIMPLICITY

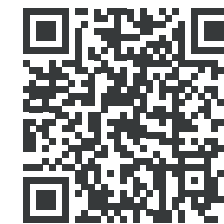
The one-stop shop for all your CAD/CAM restorative needs for multiple implant brands.



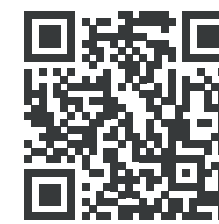
Straumann® Prosthetic Selection Guide

Make a difference by working in the most efficient way.

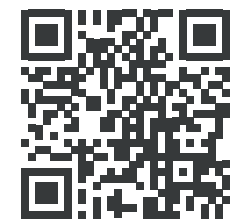
To help you master the complexity you have to deal with, Straumann introduces the Prosthetic Selection Guide, a unique digital tool that gives you access to all the components you need for your case.



Download from
Google Play



Download from
App Store



Download as
desktop version

Straumann® Ceramic Healing Abutments

The first step to harmonious soft-tissue healing.

The Straumann® Ceramic Healing Abutments ensure favorable conditions for soft-tissue attachment, thereby supporting a healthy peri-implant environment.

Their well-proven zirconia material also helps surgeons and prosthodontists looking for less plaque attachment and enhanced soft tissue healing from the day of surgery.



FAVORABLE SOFT-TISSUE ATTACHMENT

With blood circulation similar to that around natural tooth.^{1-2*}



DESIGNED FOR HEALTHY PERI-IMPLANT ENVIRONMENT

Less plaque attachment.^{2-5*}



ESTHETICS FROM THE DAY OF SURGERY

Ceramic for healing phase and final restoration.



EASE OF USE

Aspiration-security and color-coding.

*references on www.straumann.com/ceramic-healing-abutments

Straumann® n!ce®
Fully crystallized glass-ceramic.
n!ce® to meet you.



New high-tech, glass-ceramic solution from Straumann® that delivers fast, esthetic single tooth restorations



➔ Discover more: www.straumann.com/nice

ESTHETIC DENTISTRY



Straumann® Esthetic Dentistry
Let your patients enjoy life with a
beautiful smile.

Looking for state-of-the-art products that meet the increasing demand for esthetic solutions? We have the portfolio that will support you in achieving and maintaining your patients' beautiful smiles.

Straumann® Emdogain® – 25 years Mastering periodontal regeneration and oral wound healing.



Our biological solution that induces regeneration of periodontal tissues and significantly enhances the oral wound healing is celebrating 25 years of clinical success.

25 years passed since the introduction of Straumann® Emdogain®. Over time, our biological material became a gold standard in periodontology due to its extensive documentation and solid clinical evidence.

Straumann® Emdogain® FL Cultivating periodontal regeneration.

➔ For more information on the clinical success visit:
www.straumann.com/emdogain-fl

Differentiate your practice by offering a flapless regenerative periodontal treatment with Straumann® Emdogain® FL.

For the first time, true periodontal regeneration can be achieved in a minimally invasive way: without surgical flap.^{11,12} Based on decades of clinical experience in regenerative flap surgery, periodontal pockets up to 9 mm deep can now be regenerated and eliminated as part of flapless periodontal procedures with Straumann® Emdogain® FL.



STABILITY OVER LONG-TERM

Documented in over 1000 publications including 10 years follow-up studies.^{1,2}



MORE PATIENT COMFORT

Enhances the wound healing and leads to less pain and less post-operative swelling.³⁻⁸



BETTER ESTHETIC OUTCOME

Provides enhanced esthetic results: keratinized tissue and improved recession coverage.^{9,10}



MORE EFFECTIVE

Eliminate more pockets.¹³



MORE EFFICIENT

Achieve results comparable to periodontal flap surgery.¹⁴



INCREASE PATIENT COMFORT

Render your procedures milder and more tolerable.¹⁵



Straumann® XenoGraft and XenoFlex Mastering everyday cases.

Following the well-established treatment protocol using demineralized bovine bone granules for the efficient treatment of bone defects.

Straumann® XenoGraft and XenoFlex:

- Are easy to handle
- Have long-term volume stability
- Already successfully applied in over 500,000 cases worldwide



VERSATILITY



VOLUME STABILITY



EASY HANDLING

Jason® membrane Mastering performance.

The heart beats 100,000 times a day,
meaning 4 million times a year

For every beat, the heart requires a similar effort as needed to squeeze a tennis ball with one hand. The pericardium surrounds the heart and needs to constantly allow and resist the acting forces.

Jason® membrane exploits the power of the heart: thanks to its native collagen structure of porcine pericardium, this membrane has set a new standard in bone augmentation procedures. Its excellent biocompatibility¹⁶ and the extended barrier function¹⁷ ensure a reliable performance in all kinds of augmentations, including complex cases and thin biotypes.



TRUST IN NATURE

Over 10 years of clinical success
and scientific publications.



TENSILE STRENGTH

Tear resistance thanks to the
native pericardium structure.



EASY HANDLING

Very thin yet not sticky to
instruments.





Straumann® PURE Ceramic Implant System
The natural and strong solution.
Makes patients love their smiles.



Nothing is more winning than a light-hearted and happy smile. With the Straumann® PURE Ceramic Implant System even very demanding patients can smile with confidence without compromising on esthetics, reliability and the most natural choice of material.

With the Straumann® PURE Ceramic Implant System you can grant the best esthetic, natural and strong treatment to your patients. They will benefit from all the highly esthetic advantages of a natural ceramic implant, ivory-colored like a natural tooth root and not shining through, even in cases of thin gingival biotypes. Yet you can rely on our high-performance zirconia ceramic material, which is even stronger than the gold standard, grade-4 titanium implants.

➔ Discover natural PURE white:
www.straumann.com/pure



OUTSTANDING ESTHETICS

Favorable soft tissue attachment, high-end esthetic restorations.^{18,19}



PROVEN QUALITY

High performance zirconia ceramic, 100 % proof tested.²⁰



EXCEPTIONAL SURFACE

ZLA® surface with revolutionary osseointegration features.²¹⁻²³



FLEXIBILITY

Flexible treatment protocols, digital pre-operative implant planning.



INNOVATIVE

A new system that helps you expand your patient pool.



Straumann Group Implant Health Fit for life.

PREVENTION. DIAGNOSIS. TREATMENT.

Peri-implant complications are inflammatory conditions affecting the soft tissue and bone around dental implants. Recent data²⁴ indicates that one in five patients suffer from peri-implantitis 10 years after implant placement.

Peri-implantitis and its precursor peri-implant mucositis create suffering, discomfort and high costs for patients. If not treated early enough or in the right manner, peri-implantitis can lead to implant loss.

Straumann Group Implant Health is a holistic service offering designed to successfully prevent, diagnose and treat peri-implant complications.



HEALTHY PERI-IMPLANT CONDITIONS²⁵⁻⁴⁸

Ensure predictable, long-term treatment success, benefit from clinically proven solutions.



BROADENED TREATMENT OPTIONS

Offer a broad range of dental treatment solutions and services to prevent, diagnose and treat peri-implant complications.



TIME AND COST SAVING

Reduce complexity with a one-stop shop solution and treatment guidance. Facilitate greater patient acceptance for recalls and home care.



ENABLEMENT & EDUCATION



Straumann® Enablement and Education
Your success is our success.

Technologically, dentistry is evolving at a rapid pace. At the same time, “soft factors” and marketing activities are becoming more important in gaining new patients. We provide support that goes beyond products and technical skills. Whether you are experienced or just about to start your career as a dental professional: Straumann offers a variety of dedicated programs, as well as practice management and marketing tools. Furthermore, an extensive offering in training and continuous education will ensure that you and your practice stay at the forefront of dentistry.

Straumann® Smart
Immerse to succeed.
Discover the world of implant
dentistry with us.



CLASSROOM
TRAINING



ONLINE
TRAINING



MENTORING



SIMPLE PRODUCT
PORTFOLIO



LAB
COMMUNICATION



PRACTICE
AND PATIENT
MARKETING

Straumann Courses.

The Straumann Course website provides an overview of local and international courses from Straumann, botiss and ITI. Courses range from all levels of complexity with hands-on sessions and live surgeries.



Check local and international
courses here:
www.straumann.com/courses



THE ITI – A STRONG COMMITTEMENT TO EVIDENCE-BASED PRACTICE

For over 40 years, Straumann has benefitted from a close and fruitful relationship with the International Team for Implantology (ITI), the largest international organization in implant dentistry. The ITI is a driving force in education and the dissemination of knowledge in this field, focusing on the development of well-documented, evidence-based treatment guidelines and the consolidation of long-term data.

Almost 20,000 members from all over the world participate in ITI education and research activities and exchange their expertise to continuously improve their skills and treatment provided to the patients.

Your confidence.
Supported by
scientific evidence.

Straumann products are highly reliable and clinically safe, and this can only be achieved through a strong dedication to Science.

The dental community highly respects our scientific outlook and commitment, which is reinforced by the vast body of evidence that our products and solutions offer. Year after year, hundreds of peer-reviewed publications by independent researchers validate their excellent and long-term performance. This is extremely relevant for dentists and patients who choose products that are strongly supported by evidence and provide predictable outcomes.

Since the establishment of Straumann, we have closely collaborated with the leading clinicians, research institutes and universities worldwide to provide the clinical data and substantiation for our products that support their exceptional standards. Our products are continuously documented in different treatment scenarios. We always ascertain we have evidence before launching a product in market.

DIGITAL SOLUTIONS



Straumann Group Digital Solutions
Orchestrating digital efficiency.

Welcome to Digital Solutions, the integrated digital performance offering and brands of the Straumann Group. Efficient and validated workflows, high-tech dental equipment and premium materials.

SOLUTIONS FOR DENTISTS.

The Straumann Group Digital Solutions offering for dentists entails cost-effective, efficient, and easy-to-use hardware for intraoral scanning, printing and in-house milling. Dentists, lab technicians, as well as patients – they all benefit from a digital workflow that delivers time savings and allows for more time in communication and patient care.

Scanning — Planning — Designing — 3D-Printing



→ Discover more: www.straumann.com/cares-dentists

SOLUTIONS FOR LABS. PLAYING TOGETHER SEAMLESSLY.

Our efficient, flexible and collaborative workflow solution will make daily life in your lab easier and more predictable. Straumann Group Digital Solutions for dental labs means validated, digital workflows from scan to manufacture. It's a comprehensive package of first class hardware and software dedicated to support you in meeting all the upcoming challenges of digital dentistry.

Scanning — Planning — Designing — 3D-Printing



Discover more: www.straumann.com/cares-labs

Customized Prosthetic Solutions

Our Centralized Milling Centers utilize high-speed cutting (HSC) milling technology to manufacture high-quality restorations in a validated workflow. Our state-of-the-art milling machines combine a mixture of size, speed and agility to deliver predictable and consistent prosthetic quality.



FLEXIBILITY

Extend the indication range for your milling equipment.



TIME

Benefit from a faster and controlled turnaround time.



PEACE OF MIND

Straumann® Guarantee and support.



PROFITABILITY

Maximize your return on investment.



PRECISION

Perfectly matching components.



Smile in a Box™

Focus on your passion – we take care of the rest.

Smile in a Box™ is a flexible treatment planning and manufacturing service to gain efficiency and practice growth. You select the services you want to focus on - we deliver everything else you need for your treatment in one box.



IMPROVE PATIENT EXPERIENCE AND TREATMENT ACCEPTANCE

by faster time to teeth and effective communication.



GAIN EFFICIENCY IN YOUR PRACTICE

with immediate protocols and flexible workflow outsourcing.



MEET PATIENT EXPECTATIONS

with a predictable guided surgery workflow. Benefit from all-in-one delivery.



GROW YOUR BUSINESS IN A FLEXIBLE WAY

that suits your situation. Establish digital workflows without investment.

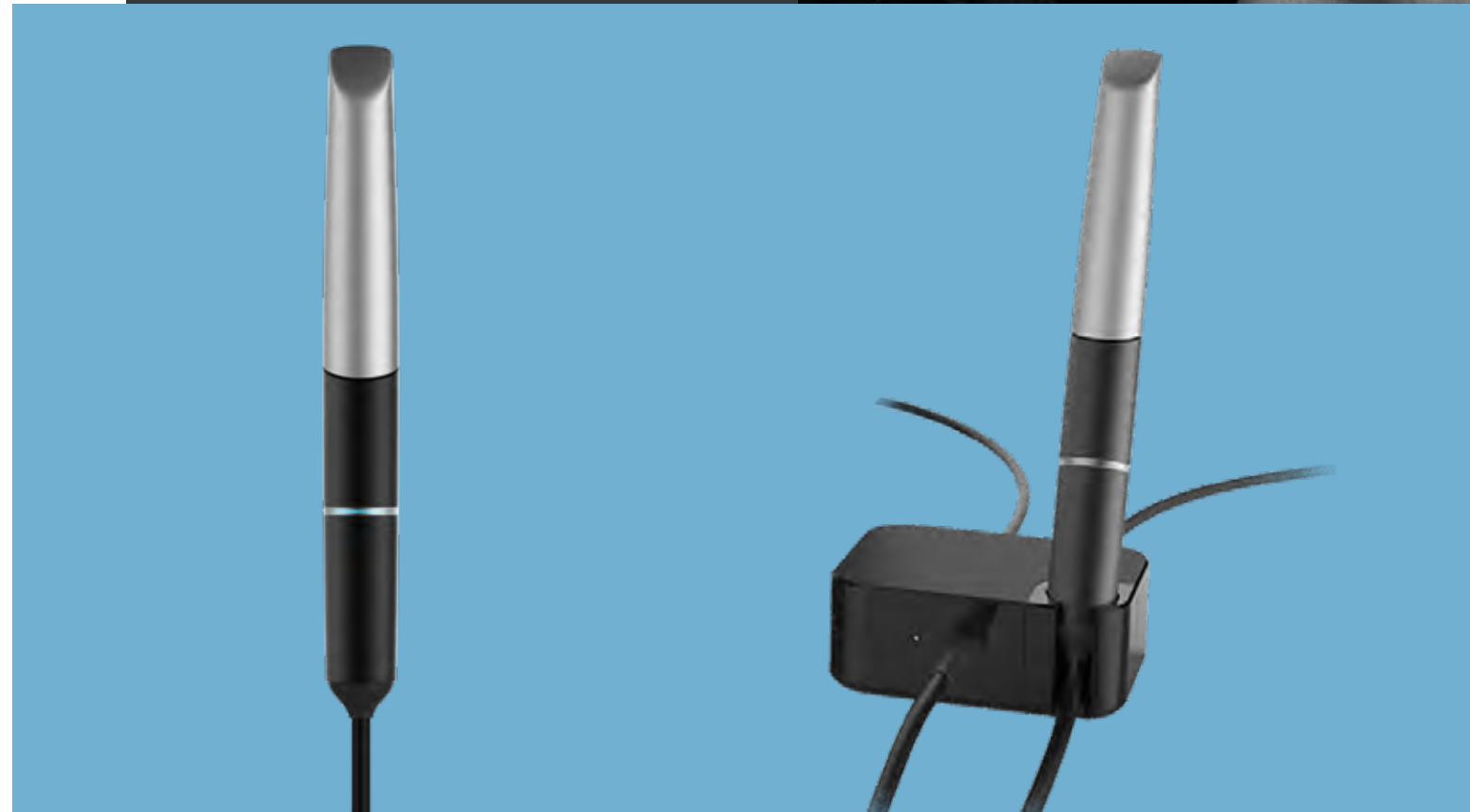


Get access: www.smileinabox.com

Virtuo Vivo™ Capture each note.

Accurate, full arch, powder-free scanning in real-life colors is just the beginning of your digital journey. With Virtuo Vivo™ you have access to a full digital ecosystem.

With Virtuo Vivo™ you can quickly and easily acquire digital impression data.



P series

Strike a chord with precision and productivity.

Our P series from Rapid Shape deliver a new dimension in fast and professional 3D printing to allow you to produce top-quality dental products in-house and on-demand. The P series provides new functions to improve quality, flexibility, productivity and efficiency.

P Pro Resins deliver consistent, high-quality products you can rely on, with Straumann® service and after-sales support. Flexible enough to meet the demand for ease-of use in clinical practice and high productivity in dental laboratories. Suited for a broad variety of planned and released indications as well as applications: models, splints, gingiva masks, temporary crowns and bridges, drill guides, casts, denture bases, impression trays.



P30+ and P30+ ASM2.0

Automated, powerful and productive: The workhorse for professional dental laboratories.

The P30+ stands for quality and high productivity. Features such as the large display, automatic door opening and the optional Automatic Separation Module (ASM2.0) enhance user friendliness. The temperature-controlled material reservoir ensures process safety and consistent quality results.

The P30+ ASM2.0 makes your workflow easier.
The ASM2.0 feature allows your printer to print without pausing. The removable catch tray can be emptied while a print job is in progress. During a prolonged print process you don't need to clean your build platform or separate the parts from the build platform with a spatula. The ASM2.0 helps you work more cleanly and saves material by letting it flow back into the material reservoir.



Ideal for prolonged print jobs



Intelligent connection to P wash and P cure



User-friendly



Open material system



Automatic Separation Module



TECHNICAL SPECIFICATIONS	P30+	P30+ ASM2.0
Print area	133 × 75 mm	133 × 75 mm
Native pixel	+/- 34 µm	+/- 34 µm
Max. part height	110 mm	75 mm – 110 mm with deactivated ASM function
Light source	385 nm UV LED	385 nm UV LED
Resolution	HD 1920 × 1080 px	HD 1920 × 1080 px
Dimensions (W × H × D)	480 × 690 × 410 mm	480 × 690 × 410 mm
Connections	WLAN, Ethernet, USB	WLAN, Ethernet, USB
Control	10" touchscreen	10" touchscreen
New functions		Automatic Separation Module (ASM2.0)





The easy entry into
digital dentistry

Medit i500

straumanngroup
Digital Solutions



Small Tip
The small tip on the Medit i500 is beneficial to both the user and the patient through simpler maneuverability and improved patient comfort.



High Resolution
The Medit i500 produces realistic images which are high in resolution and rich in detail, allowing you to distinguish between tooth structure and soft tissue for easy identification of margin lines and undercuts.



Accuracy

	In vitro*		In vivo**
	Trueness	Precision	
Single	5.3µm ± 0.34	3.2µm ± 0.49	10µm
Quadrant	17.3µm ± 0.43	6.3µm ± 0.63	25µm
Full arch	21.0µm ± 1.48	22.6µm ± 7.55	50µm

* Accuracy test in vitro was conducted by Yonsei University College of Dentistry according to the methods in "Accuracy comparison analysis on scan data of single tooth, quadrant, and full arch between two types of intraoral scanner, i500 and Trios 3" Ji-Man Park, 19 December 2018.
** Accuracy test in vivo was conducted by Medit.



Video Type
There is no need to worry about choppy results with the Medit i500 as it takes rapid video-based scans, capturing more data in a short period of time. The resulting image taken by the dual cameras is hence smoother and more detailed.



Lightweight
Scanning can be uncomfortable and tiring, especially if you're using a heavy scanner. But we have eliminated that problem with the Medit i500 scanner which is light in weight and easy to hold, making the process a comfortable one for you.



Vivid Color
The Medit i500 scanner produces precise-colored scans which can distinguish between soft tissue, plaque and teeth.



Single Button Control
The single button of the Medit i500 allows the user to start and stop the scan at any moment without having to reach for the computer. Press the button down once to start scanning, and another time to stop. When the scan is complete, hold it down to move to the next scanning stage.



Medit T-Series

Introducing the new and improved T-Series

We've completely overhauled the design of our T-Series tabletop scanners.

The result is a sleek and sophisticated scanner which not only does its work well, but in style.



Our fastest, yet again

From the company that brought you the first blue-light tabletop scanner, introducing the **Medit T710**, the **superfast Medit tabletop scanner** you have yet to experience.



Why the Medit T-Series? It's a simple choice.



Superfast scanning

With our high-quality hardware and optimized software, scan a full-arch in just 8 seconds with the T710.



High-resolution cameras

Our 5.0MP cameras ensure high-resolution detailed scan data. With the four-camera system, the T710 covers a wide scan area, eliminating any blind spots.



High accuracy

4-micron accuracy: ISO 12836



Auto-elevation

Say goodbye to stacking half-jigs for the correct scanning position with our auto-elevation feature. For your ease of use.



Open system

Enjoy the freedom of our open system which allows you to import and export files in STL format so you can design on virtually any software.

coDiagnostiX® 10

OPENING UP NEW HORIZONS

NEW!

Broader range of applications
Vast variety of guides



The full-featured tailor fit software solution that opens more treatment opportunities in the guided surgery world

Benefit from:

- Increased precision and predictability
- Reduced treatment time
- Increased efficiency

Thanks to new guide design options coDiagnostiX® 10 now offers these signature advantages for an even broader range of applications.

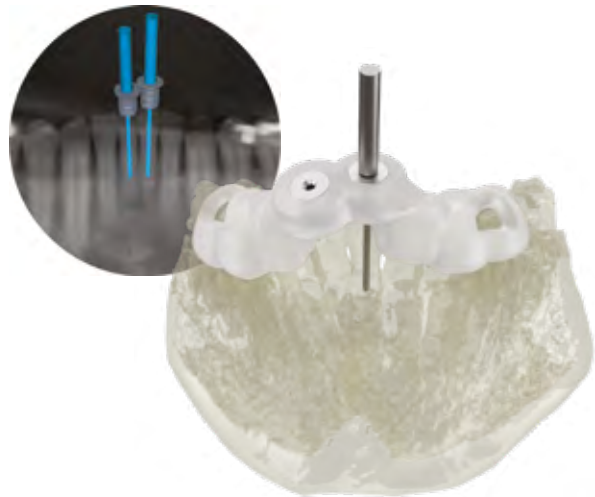
Cover an even wider range of treatment scenarios

Benefit from the new design tools offered by coDiagnostiX® 10

BONE REDUCTION GUIDES*

Designed to support cutting of osseous structures by guiding an instrument along a predefined plane.

- Improve full arch planning for edentulous cases.
- Get a better orientation where to cut through prosthetic-driven assessment of the bone reduction level.
- Replicate a complete workflow including temporary prosthetics by using a bone reduction guide in combination with an implant guide.



ENDODONTIC GUIDES*

Designed to support endodontic treatment offering a smart and safe treatment approach for cases with pulp canal calcification or difficult to locate root canals.

Benefit from:

- Predictable results
- Reduced treatment time
- Reduced loss of substance
- Reduced risk of perforations

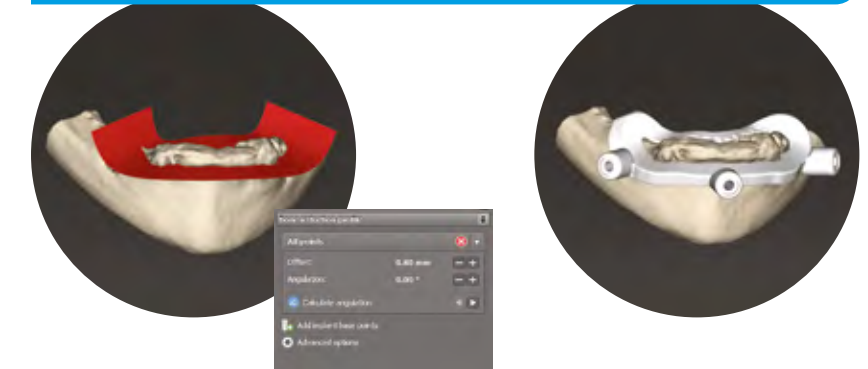


GUIDE DESIGN

Guide design with coDiagnostiX® 10 combines **high precision** and **trusted user guidance** with **completely new design options** letting you create a variety of new guide types.

SURGICAL GUIDES WITH CUT PROFILE

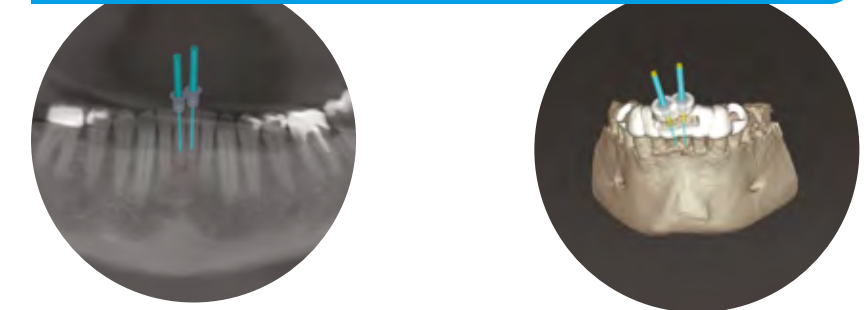
Define a cut profile to be used as the basis for a bone reduction guide.*



Versatility: Defining the cut profile* is the basis for designing further types of guides, such as apicoectomy, external sinus lift and related guides.

GUIDES FOR ENDODONTIC TREATMENTS

Select endodontic drills and assign them to tooth positions to design an endodontic guide.



*Ask your Straumann contact partners for more details, availabilities and required coDiagnostiX® license types.

ORTHODONTICS

A black and white photograph of three women laughing joyfully. The woman on the left has long dark hair and is wearing a light-colored t-shirt. The woman in the middle is wearing sunglasses, a patterned top, and a necklace. The woman on the right is wearing a dark tank top and a hat. The background is blurred, suggesting an outdoor setting.

Straumann® Orthodontics
The next generation of integrated
orthodontics.

We are witnessing a paradigm shift created by changing patient behaviours and groundbreaking innovations in diagnostics, procedures and products. Be it artificial intelligence, digital equipment, software or clear aligners, the line between dentists and orthodontists is becoming increasingly blurred. We understand: both patient and dentist expect integrated, patient-friendly and effective solutions that are accessible and affordable.



Your partner in ortho

clearcorrect
A Straumann Group Brand

As a clinician, you're on a mission to improve lives. Your patients count on you, and that calling can be daunting to face alone. Fortunately, you don't have to.

We're ClearCorrect, the global orthodontics brand that's backed by the powerful legacy of innovation, research, and clinical excellence that the Straumann Group is known for.

We deliver the support you need, with the freedom you want, and the quality orthodontic products that you and your patients deserve.



Premier aligner
Engineered for precision, comfort, and esthetics, ClearCorrect aligners feature a unique combination of our proprietary **ClearQuartz™** material, high, flat trimline, and new customization options to help you achieve your orthodontic goals.



Empowering digital workflow
Our powerful, intuitive digital platform gives you control and flexibility from case submission all the way to completion. With **ClearPilot™** as your central treatment planning tool, case management is a breeze.



Your trusted partner in ortho
Ortho Campus embodies the legacy for excellence in education that the Straumann Group is known for, and is one of the many ways ClearCorrect partners with clinicians for success in orthodontics.

ClearCorrect™ aligners

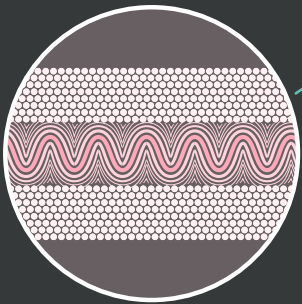
A unique combination, engineered to move teeth more predictably

What does it take to move teeth? It's simple, really: consistent, continuous force. Only ClearCorrect™ aligners feature a flat trimline above the gingival margin combined with our proprietary ClearQuartz™ tri-layer aligner material. The resulting aligner is remarkably retentive and effective, and doesn't sacrifice comfort, clarity, or resilience as it helps you achieve optimal results in a wide variety of cases.



ClearQuartz tri-layer material

Thanks to its multi-layer design, ClearQuartz retains 10x more of its initial force than other competitors¹, and retains its shape throughout the wear time of the aligner².



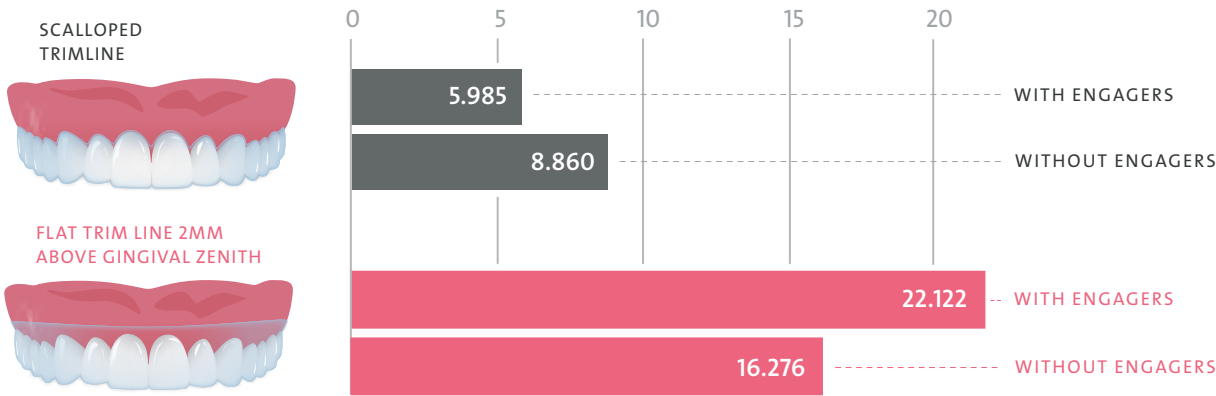
Low-porosity material
For toughness and stain-resistance

Elastomeric layer
Applies gentle, consistent, and continuous force

The ClearCorrect trimline: Proven to optimize fit and retention.

With a smooth, unscalloped trimline that extends past the gingival margin, ClearCorrect aligners are more than 2.5x more retentive than scalloped aligners, and are engineered to achieve more complex tooth movements, even while reducing the need for engagers.

ClearCorrect aligners are over 2.5x more retentive vs. scalloped trimline³



¹ Data on file. Over 72 hours.
² Data on file vs 0.30 single layer material.
³ "The effect of gingival-margin design on the retention of thermoformed aligners" by Daniel P. Cowley, James Mah, and Brendan O'Toole in the Journal of Clinical Orthodontics: JCO 11/2012; 46(11):697-702.



clearpilot






Powerful digital treatment planning

Customizing your treatment outcomes is easy with ClearPilot™, the intuitive treatment planning tool that gives you control and flexibility, from planning to approval.



ClearPilot lets you see it all: the case details, patient records, original prescription, comment history, and a wide variety of visualization tools. With ClearPilot, you and your patients can visualize personalized treatment outcomes, which can help support clinical evaluation, digital treatment planning, and increased patient engagement.

Robust treatment planning tools with ClearPilot™

-  **Multiview**
view upper and lower arches in occlusion and independently all at the same time.
-  **Millimeter grid**
just how much overjet are you leaving? Just how much space needs to be closed? This feature will cut down on guess work.
-  **Superimposition**
activate this feature to compare any step to the starting position of treatment.
-  **Occlusal heat map**
Need to check on any heavy occlusal contacts? We've got just the tool for you.
-  **Single tooth movement**
Want even more control? Single tooth movement lets you customize your treatment plan by modifying the final position of each individual tooth.

The ClearPilot platform is updated regularly with new features and improvements—keep an eye out for the next exciting update!

STRAUMANN GROUP





NEODENT® – Creating new smiles everyday. A leader in immediate treatment.



GLOBAL BRAND

Available in more than 80 countries with more than 2 millions implant sold annually.



PROGRESSIVE TREATMENT CONCEPTS

Modern and reliable solutions.



FOUNDED BY A DENTIST TO DENTISTS

A legacy of more than 25 years focused on ease of use.



THERAPY ACCESS AND AFFORDABILITY

Acessability to proven and affordable solutions.

GREATNESS IS AN ACHIEVEMENT

NEODENT® GRAND MORSE®

The Neodent® Grand Morse® implant system is the achievement of 25 years of experiences in implant dentistry, and shared experiences with many clinicians worldwide. Continuing with a unique purpose to always deliver high quality treatment options that change patients’ lives, the Grand Morse® implant system is the Neodent® evolution. Anchor within our philosophy of respecting mechanical and biological principles, this makes it THE implant of choice in dental implant therapy.



Grand Esthetic

Deliver immediate natural esthetic.



Grand Reliability

Stable and strong foundation designed for long term success.



Grand Simplicity

Ease of use at its best.



Grand Stability

Optimized implant design for high initial stability in different bone types and techniques.





Grow with peace of mind

Neodent® EasyPack combines in one set all the required components for a single tooth replacement, with implant placement, healing phase, provisional restorations and impressions. Simplifying the access to flexible final restorative options.



THE NEODENT® EASYPACK INCLUDES

- 1 Grand Morse® Helix Implant
- 2 Grand Morse® Cover Screw
- 3 Grand Morse® Healing Abutment
- 4 Grand Morse® Hybrid Implant Analog
- 5 Grand Morse® 3-in-1 Neodent Smart Abutment™



THE NEW EFFICIENT 3-IN-1 GM SMART ABUTMENT



Simplicity at one hand

Neodent® EasyGuide is designed to offer guided-surgery-techniques with stop drills to be used directly on the sleeve of the surgical guide, enabling straightforward, predictable and efficient one-hand procedures.



NEODENT® BRINGS ALL TO YOUR HAND:

- One-hand procedures with no drill handles
- One drill design
- Fully guided bed preparation with stop drills
- Maximum soft tissue preservation
- Access to predictable flapless surgery
- Guided implant insertion
- One implant connection
- Color-coded and intuitive protocol
- Reliability for immediate treatment



Trust yourself

Neodent® has developed the **Control System**, enabling greater access to dental implant therapy by reducing clinicians' and patients' stress during operative procedures by protecting anatomical structures and mastering limited visibility by controlling drilling depth.



USER FRIENDLY KIT RETENTIVE SYSTEM



Color code according to implant length

8 mm 10 mm 11.5 mm 13 mm



Laser-marked diameter



Zirconia Implant System

Increasing expectations for esthetic treatments with shorter duration time, the Neodent® Zirconia Implant System combines the notions of flexibility, stability, and esthetic. This metal-free solution allows to immediately treat patients with high-end esthetic, thanks to the modern naturally tapered Zirconia implant design, with comprehensive zirconia prosthetic portfolio.



A new flexibility mindset

RELIABLE AND STRONG ZIRCONIA SYSTEM

The unique patented ZiLock® connection is designed with a longer screw which provides a secure engagement between the zirconia implant and the zirconia abutment. Additionally, it improves the zirconia performance by optimizing the force distribution along the internal connection.

FRIENDLY ZILOCK® CONNECTION

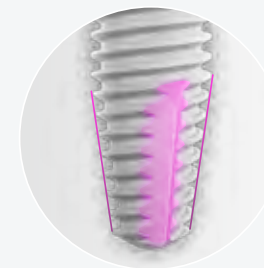
ZiLock® is a zirconia straight internal connection with 6 lobes and 6 points. This indexation results in a precise abutment positioning, protecting against rotation. The outcome is a user-friendly system that provides higher treatment flexibility when compared to one-piece implants.



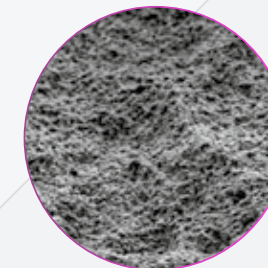
A new stability mindset



Double trapezoidal thread design.



Apically tapered with chamber flutes.



Representative image of the implant surface - Scanning Electron Microscope (SEM) magnification of 5000x.

TAPERED DESIGN FOR PRIMARY STABILITY

Zirconia Implant System exhibits a modern tapered implant geometry designed for predictable immediacy in all bone types. This feature was designed to mimic the tapered shape of a natural tooth root, driving to achieve high primary stability.

PREDICTABILITY WITH SAND-BLASTED AND ACID-ETCHED SURFACE

Zi features the sand-blasted and acid-etched surface treatment, presenting macro and micro roughness based on the highly successful Neoporos® treatment surface.



A new esthetic mindset

A PORTFOLIO TO ACHIEVE NATURAL ESTHETIC RESULTS

Zirconia prosthetic portfolio allows conventional or immediate protocol. In addition, preferable workflow can be applied from conventional to digital, providing a natural-looking restoration.



Zirconia Base

Designed to be installed between the dental implant and the prosthesis. Compatible with digital or conventional workflow.



Healing Abutment

Designed in Zirconia with a consistent emergence profile matching the outer shape of the Zirconia Base.



Hybrid Repositionable Analog

Features a unique design compatible with digital or conventional workflow.



Conventional Workflow

The burn-out coping is developed to deliver accurate wax up prosthetic restoration in a conventional workflow.



Digital Workflow

The Scanbody allows access to the digital restorative workflow for implant level. This solution is compatible with the main CAD softwares in the market.



A SMILE FOR EVERYONE

NEODENT® NEOARCH®

ZYGOMA GM™

IMPLANT FOR ZYGOMATIC ANCHORAGE

The Neodent® Zygoma GM™ complement the standard implant system for achieving immediate loading protocol in fixed full arch restoration. It is specifically designed to bring surgical predictability to severely atrophied maxilla cases, as a predictable alternative to grafting procedures.

1. GRAND MORSE® CONNECTION

Straight head bringing flexibility compared to angulated versions.

2. TISSUE PROTECT

Non-threaded area for a friendly contact with the mucosa when using the exteriorized technic.

3. COMPREHENSIVE PORTFOLIO

4.0 diameter with a large portfolio with the following lengths: 30 / 35 / 37.5 / 40 / 42.5 / 45 / 47.5 / 50 / 52.5 / 55 mm.



PROSTHETIC VERSATILITY

The Neodent® Grand Morse® restorative portfolio offers optimal abutments angulations and a broad range of gingival heights is designed to attend different clinical needs. It allows to reach immediate function and esthetics, regardless of the maxilla atrophy level.

0°	17°	30°	45°*	60°**
0.8 / 1.5 / 2.5 / 3.5 / 4.5 / 5.5 mm	1.5 / 2.5 / 3.5 mm	1.5 / 2.5 / 3.5 mm	1.5 / 2.5 mm	1.5 / 2.5 mm

Gingival Heights

*The 45° Mini Conical Abutment is indicated for use only with Helix GM® Long and Zygoma GM™.

**The 60° Mini Conical Abutment is indicated for use only with Zygoma GM™.

DIGITAL SOLUTION

Comprehensive restorative solutions: designed to meet all patient expectations.

Meet patient stability and comfort expectations thanks to comprehensive customized milled frameworks for provisional or final restoration at the abutment level using a broad range of material and any workflows.





Medentika®.
Prosthetics perfected –
implants engineered.

- IPS IMPLANT SYSTEM
- MPS MULTI PLATFORM SYSTEM



**LEADING
MANUFACTURER**

With a variety of connections
- compatible with the major
implant systems - one of the
leading supplier of compatible
prosthetics



**MADE IN
GERMANY**

A long tradition of precision
craftsmanship and
industrial production.



**PASSION FOR
PRECISION**

Dedication and ambition to
perfect products and enable
access to supreme technology.



Not all products are available in all countries. Please talk to your local dealer.



#PassionForPrecision

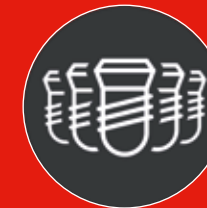
Prothetics perfected.
Implants engineered and made in Germany

Medentika®
LIFETIME
GUARANTEE



Founded in 2005 in Hügelsheim, Germany, Medentika® is a leading manufacturer of compatible prosthetics. This fast-growing, agile engineering company makes German quality and precision craftsmanship affordable and accessible.

Medentika® has a passion for perfection and precision, that's why our compatible prosthetics come with a life-time warranty. Medentika® supplies dental technicians and dentists around the world.



2.8 MILLION
implants and
abutments per year



GLOBAL
distribution

MICROCONE



- High-precision, implant-abutment connection
- Promotes preservation of the crestal bone* thanks to the innovative (continuous) micro-macro thread*



QUATTROCONE



- Optimized primary stability
- Bone friendly
- Particularly suitable for:
 - Immediate placement
 - Immediate loading
 - QuattroFix concept



QUATTROCONE System has been developed by implantologists for implantologists. QUATTROCONE30 is designed to enhance the range especially for the QuattroFix** concept.

PROCONE



- Proven implant-abutment connection
- Promotes preservation of the crestal bone*
- High primary stability



With PROCONE, Medentika® offers a proven implant specifically developed to meet the surgical requirements to enable crestal bone* preservation and provide high primary stability even in demanding situations. The implant connection is compatible with the Camlog Tube-in-Tube™ implant-abutment connection***.

MINICONE



- A slim and permanent implant solution
- Suitable in situations where bone availability is greatly reduced
- ADLC (amorphous diamond-like carbon) coating sets new standards in durability

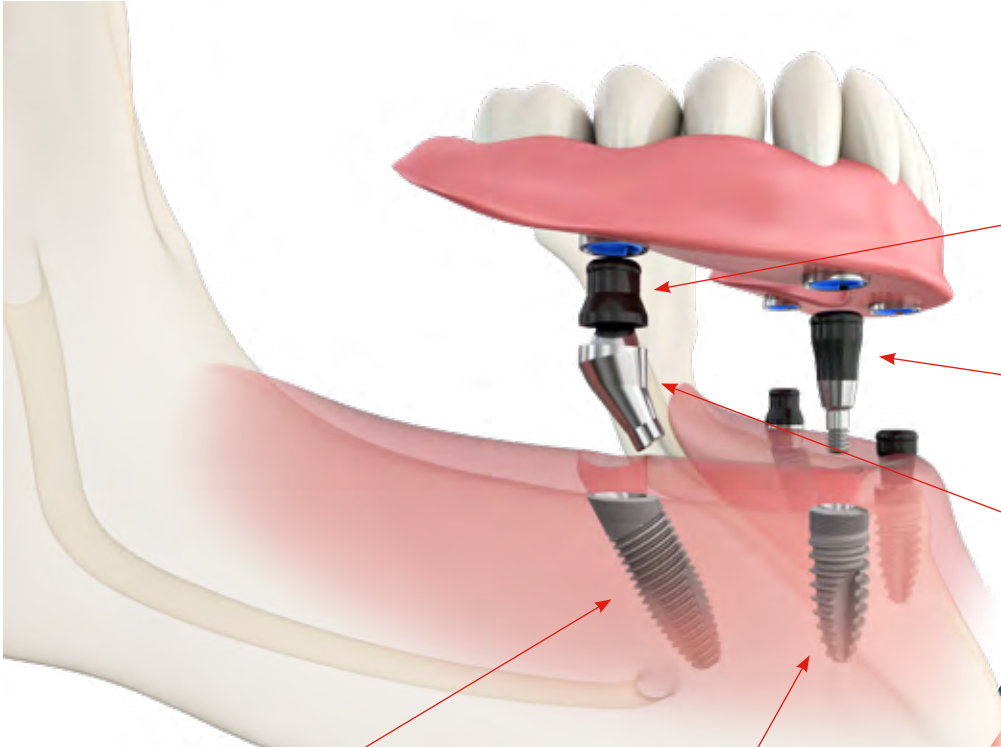


The cost-effective alternative treatment and the minimally invasive approach reduce the strain on the patient. The Minicone is a one-piece, root-shaped implant with an sand-blasted and acid-etched, rough, residue-free surface, including an integrated prosthetic Optiloc® abutment.

* Based on the principle of crestal bone preservation by a micro thread.
 ** QuattroFix is a special treatment concept for fixed, full-arch restoration for edentulous patients with an atrophic alveolar ridge on two straight and two 30 degree-angled implants.
 *** Camlog products are supplied by Camlog Biotechnologies AG, who have no legal or commercial relation with Medentika®.



Quattrocone



QUATTROCONE30

QUATTROCONE30 is specially developed and patented for the QuattroFix treatment concept and all indications with angulated implant placement.

QUATTROCONE

QUATTROCONE is a completely new implant concept. It is not only suitable for use in the QuattroFix treatment concept combined with immediate function/loading, but also in soft bone with direct implant placement in extraction sockets and in the aesthetically critical region.

QUATTROFIX

Fixed restoration for atrophic ridges allows for a comprehensive treatment plan for edentulous patients, of full-arch immediate restoration, using just two straight and two 30° angulated QUATTROCONE Implants restored with Multi-unit Abutments.

Prosthetic Components

NEW

MULTI-UNIT SCREW PATRIX MEDENTILOC

The new multi-unit screw patrix gives you another option for restoration. It enables you to switch easily from a screw-retained restoration to a removable overdenture construction.

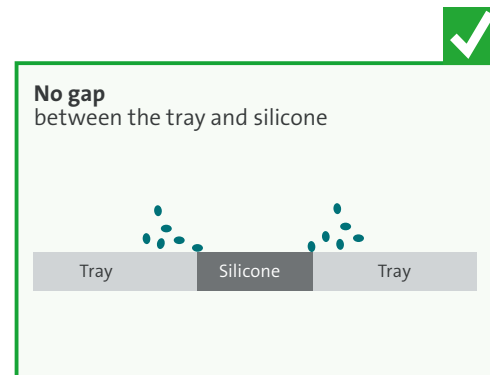


MULTI-UNIT ABUTMENT

The Multi-unit abutment supports a wide range of prosthetic restorations. It is ideal for creating patient-specific, individual hybrid restorations or as the basis for a tailored restoration in the esthetic zone.



Surgical Tray MICROCONE and QUATTROCONE



The benefits

- 1 Superior hygiene capability with intelligently designed silicon holders
- 2 Smooth, even surfaces accelerate and facilitate cleaning
- 3 Space for another drill set
- 4 10 additional slots
- 5 Removable metal dish for small parts

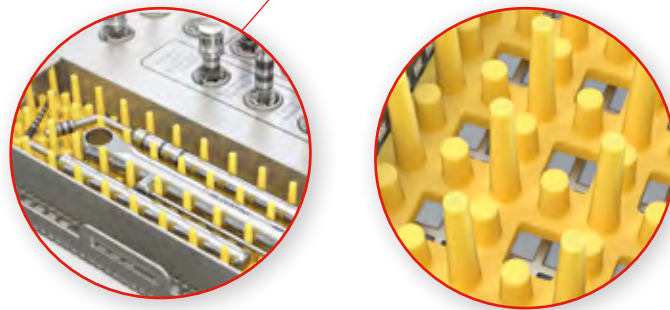
NEW



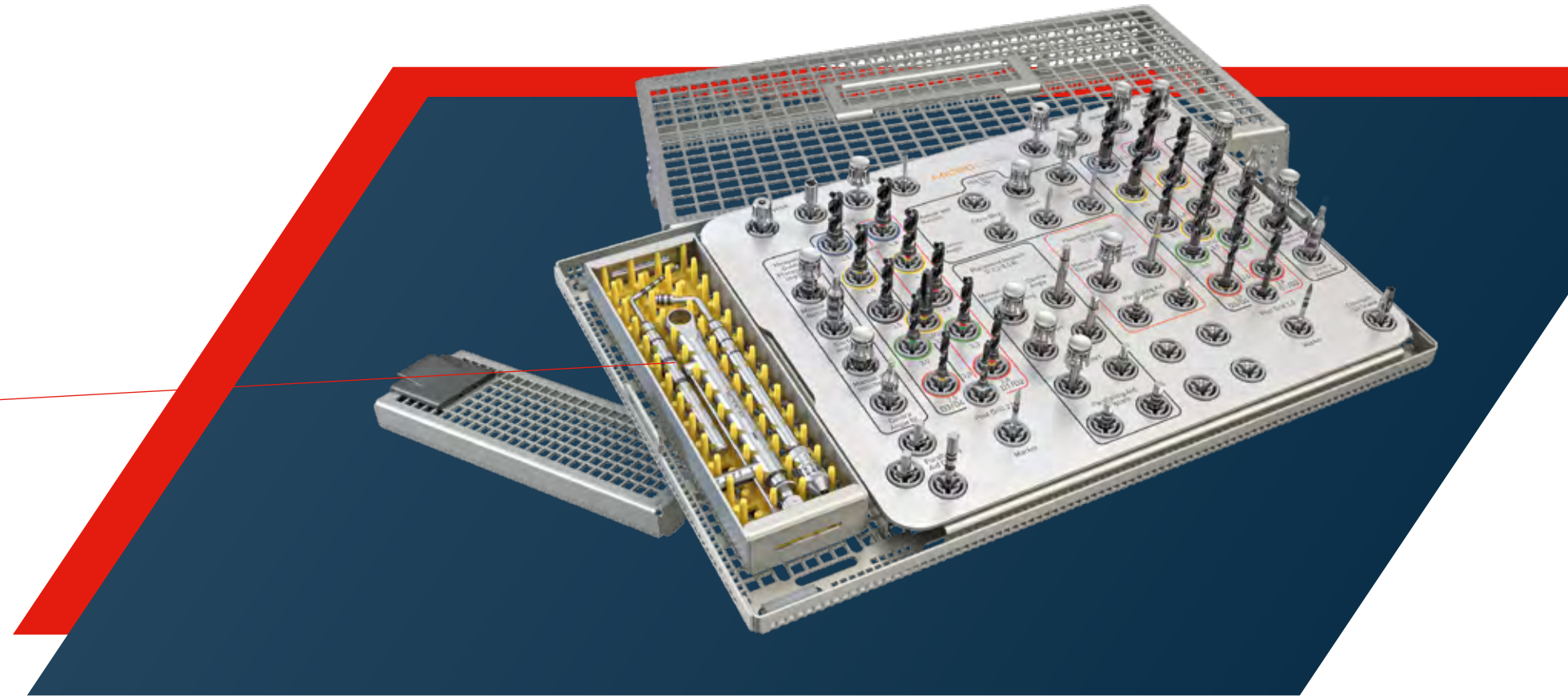
The surgery washing tray

THE EFFICIENT CLEANING METHOD.

The new surgery washing tray has been designed for the MICROCONE and QUATTROCONE instruments to be machine cleaned as easily and efficiently as possible.



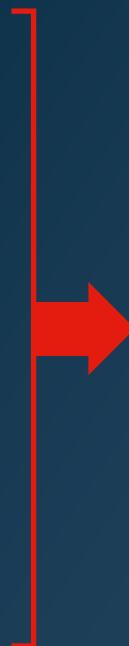
- The separate compartment with a silicone insert is used to store additional instruments, such as the torque ratchet surgical.
- The silicone insert prevents the instruments from touching, thereby preventing contact corrosion and ensuring thorough cleaning.
- The separate lid prevents small instruments from falling out.



If you prefer to use sterile containers, the JN295 from Aesculap®, for example, is a suitable option.



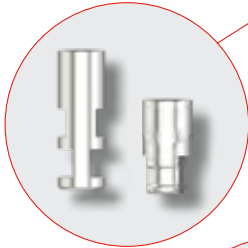
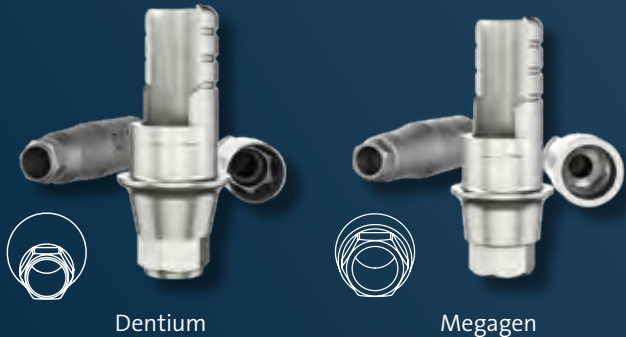
DENTSPLY SIRONA	OSSTEM	NEOSS	
BIOHORIZONS CAMLOG	HIOSSEN	BEGO	
STRAUMANN	ANTHOGRYR	MEDENTIS	
NOBEL BIO CARE	T-PLUS	BREDENT GROUP	
ZIMMER BIOMET	MEGAGEN	DENTIUM	MIS



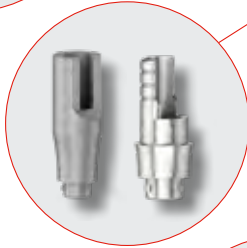
MPS MULTI PLATFORM SYSTEMS

The new compatible implant connections supplement our existing product range. We are constantly expanding our portfolio and offer you the most popular implant connections from our one-stop shop.

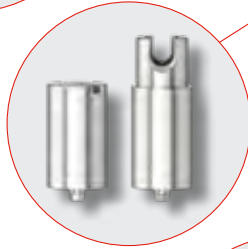
AVAILABLE
SOON



Laboratory implant
CAD/CAM laboratory implant for printed models



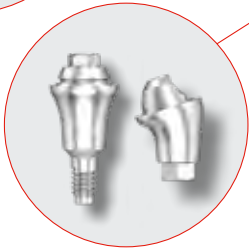
Scanbody
Titanium base ASC Flex



PreFace Abutment
(Ti/CoCr)
Ti-Forms Abutment



MedentiLOC
Novaloc®
Optiloc®



Multi-unit
(see catalog
for availability)

Not all products are available in all countries. Please talk to your local dealer.

* is a registered trademark of an independent third party



#MADE
FOR
YOU

Virtual visit of
the Anthogyr site



Creating new paths in dental implantology.

Anthogyr is your trusted partner for performance. An agile brand that goes where others don't. Experts in the medical field for more than 70 years, we dare to create ingenious solutions to your dental challenges. Reach your objectives and restore your patients' life to freedom. Let's create new paths together.



WE MOVE AS ONE

Listening, understanding
and anticipating your needs
to build a trusting
relationship.



AUDACITY TO ADVANCE

Passion for daring
and dynamic
concepts in dental
implantology.



PROSTHETICS DRIVEN

Implants with
prosthetic and
integrated digital
solutions in mind.



HIGH TECH EXPERTISE

70+ years of French
engineering and
manufacturing skill
in medical devices.



PERFORMANCE SOLUTIONS

A smart and user-friendly
product line for all treatment
preferences, from simple to
demanding procedures.



Uncompromising
performance.

#MADE
FOR
YOU

More info on
our website



- + Intelligent product range
- + Simple and efficient protocols
- + Biological safety
- + Solutions driven by prosthesis



axiom[®]
MULTI L E V E L[®]

Axiom[®] Multi level[®] is an implant concept that offers a smart range of surgical solutions, complementary philosophies with Bone and Tissue level implants, fully driven by prosthetics outcome for patients.

Axiom® Bone Level

Designed for biological integration

With more than 30 years of experience in implantology, Anthogyr launched the Axiom® implant system 10 years ago to improve access to implantology by offering innovative and accessible solutions, a greater comfort for practitioners and performance in their everyday practice.



A SIMPLE RANGE TO COVER ALL INDICATIONS

2 profiles - REG or PX
4 diameter, 7 lengths



+ Available in 2 body profiles REG and PX

+ Sealed internal conical connection

- Morse taper type connection.
- Alveolar bone is preserved.

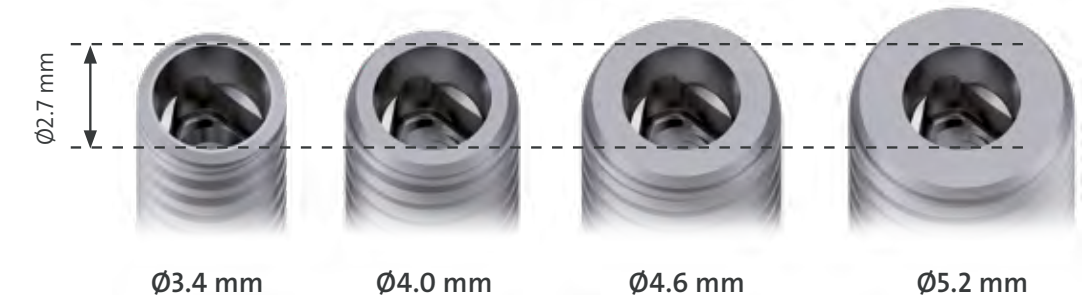
+ Platform switching

- Development of a gingival sleeve.
- Soft tissue stabilisation.

+ Subcrestal positioning

- Adapted response to all bone situations.

SINGLE DIAMETER PROSTHETIC CONNECTION



+ Prosthetic flexibility

- Prosthetic components, exhaustive and rational.
- Labside CAD/CAM, a currently expanding range.



Axiom® Tissue Level

Transgingival implant designed for biological safety

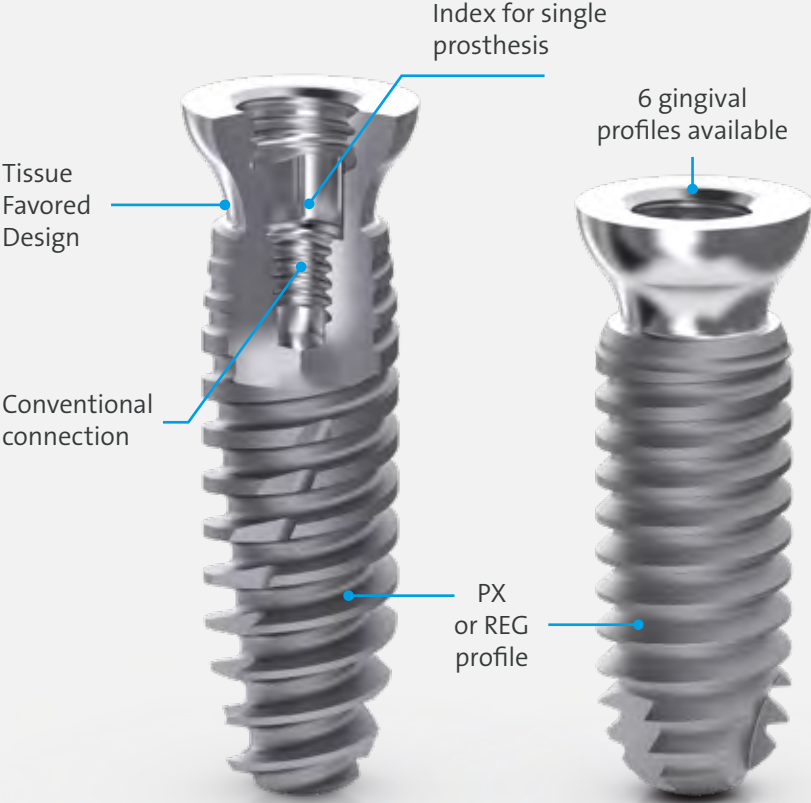


More info on our website

1 SINGLE COMPACT SURGICAL KIT

REG and PX profiles
Both Axiom® BL-TL implants

- + Simplicity
- + Freedom and flexibility
 - Possibility to adapt the implant choice during surgery
- + Efficient protocols
- + High performance cutting drills



OPTIMAL TISSUE MANAGEMENT

- + Maximised tissue volume
- + Design favorable to soft tissues
- + Safe prosthetic approach at gingival level
- + Epithelium and connective tissue attachment preserved



A COMPREHENSIVE RANGE TO COVER ALL INDICATIONS

2 profiles: REG and PX
4 diameters, 6 lengths
2 platforms, 3 neck heights

Three Axiom implants are shown side-by-side, each with a different height. The heights are labeled as 1.5, 2.5, and 3.5. The implants have a threaded body and a flat top surface.

CAMPUS

Anthogyr Education Center

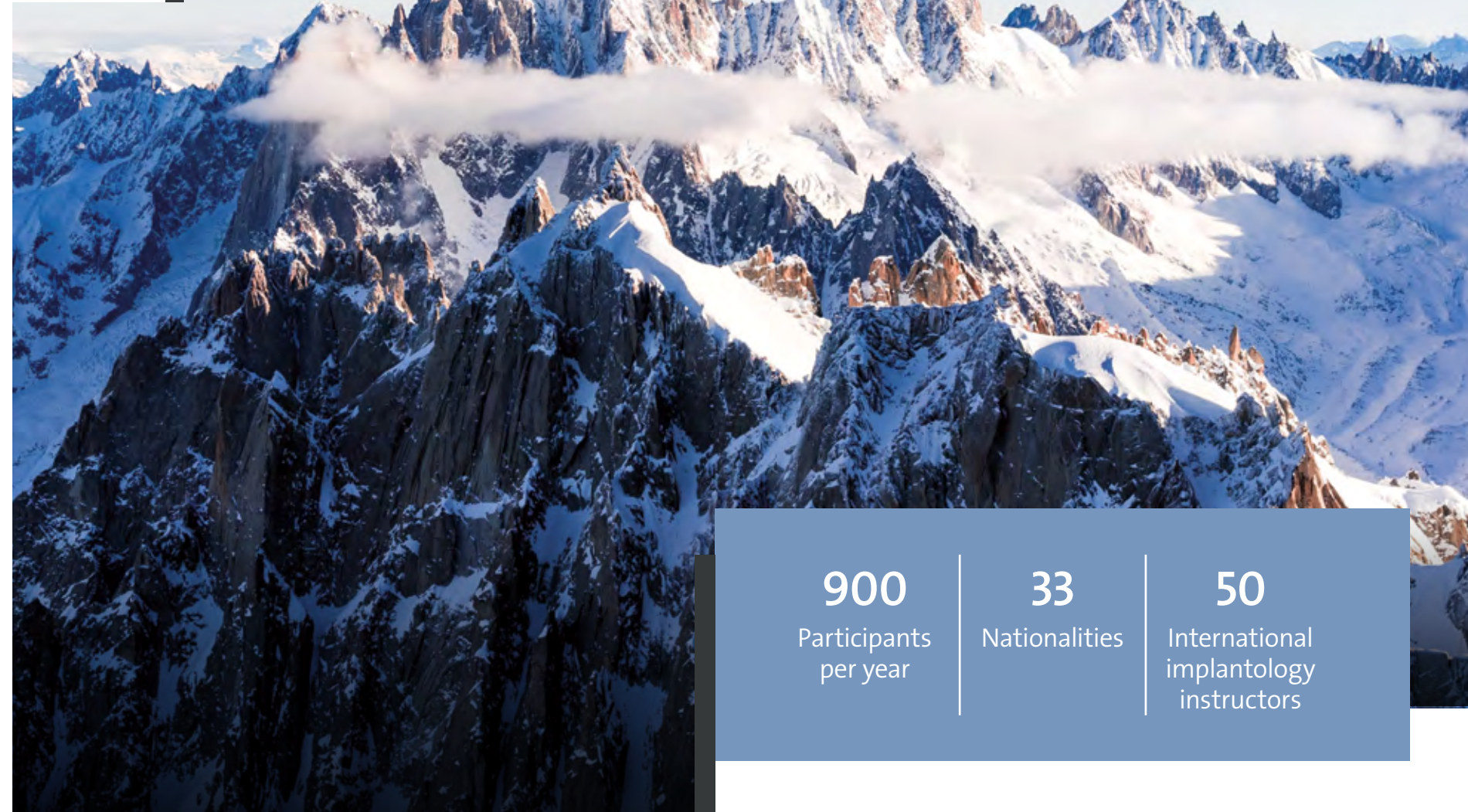


Develop your surgical and prosthetics skills with Anthogyr Campus located in the Mont Blanc Valley close to Chamonix.

- + A 2-day-Anthogyr journey to discover our roots, DNA, values, people and behind the scene, our production site.
- + Be surprised by the outstanding benefits about the **Axiom®** concept and our **Simeda®** CAD/CAM innovations.
- + Let's be practical! Participate to Campus hands-on sessions. In the heart of your activity, benefit from a surgical day with a Live Surgery.

Col du Plan and La Mer de Glace (Chamonix France)

**PARTICIPATE IN AN AMAZING
INTERNATIONAL SEMINAR!**



900

Participants
per year

33

Nationalities

50

International
implantology
instructors



Simplicity made accessible.



NUVO InternalFIT™



NUVO ConicalFIT™



Proven

Known treatment philosophies
Titanium Gr 4
Sandblasted and acid etched surface



Simple

Implant Connections
Surgical Protocols
Prosthetic handling



Versatile

One implant for all bone types
Comprehensive Implant Portfolio
Comprehensive Prosthetic Portfolio

Bringing everyone the possibility to smile, the **NUVO™** Implant System is designed to offer reliability based on proven concepts with simplicity, versatility while offering affordability.



Global Implant brand
In more than 50 countries



Proven technologies
With more than 500 scientific articles



Accessible therapy
Affordability and convenience in implant treatment



Simplicity made accessible.

InternalFIT™

The NUVO™ InternalFIT™ features the proven internal hex connection in a naturally tapered body design maximizing treatment versatility and simplicity in all bone types. The NUVO™ Implant System offers a comprehensive prosthetic portfolio covering all indications.



Comprehensive Implant Portfolio

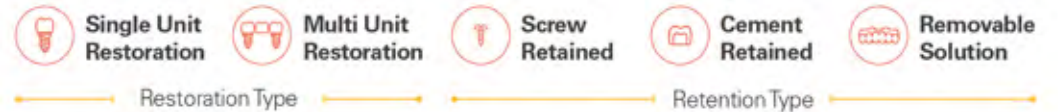
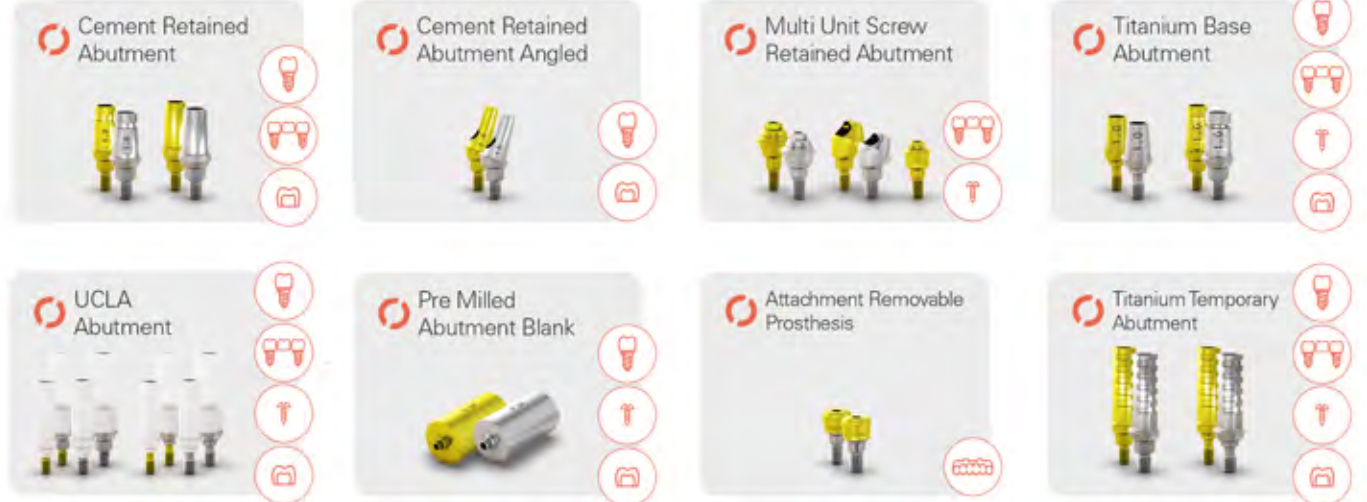
NUVO™ Implants are designed for all indications, by offering a full range of diameters and lengths.



Comprehensive Prosthetic Portfolio

NUVO™ InternalFIT™ implants offer a comprehensive prosthetic portfolio designed to meet the patient's needed treatment:

- **Indication Type:** From single to edentulous;
- **Retention Type:** From screw to cement retained;
- **Workflow Type:** From conventional to digital.





Simplicity made accessible.

ConicalFIT™

The NUVO™ ConicalFIT™ features an internal conical connection in a naturally tapered body design maximizing treatment versatility and simplicity in all bone types. The NUVO™ Implant System offers a comprehensive prosthetic portfolio covering all indications.



Comprehensive Implant Portfolio

NUVO™ Implants are designed for all indications, by offering a full range of diameters and lengths. Designed to optimize the surgical procedure the implant packaging comes already with a cover screw.



Comprehensive Prosthetic Portfolio

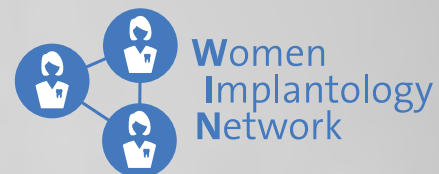
NUVO™ ConicalFIT™ implants offer a comprehensive prosthetic portfolio designed to meet the patient's needed treatment, while allowing a reduced complexity on prosthetic handling by working on all screws with only one screwdriver.

- **Indication Type:** From single to edentulous;
- **Retention Type:** From screw to cement retained;
- **Workflow Type:** From conventional to digital.



We are a global network of dental professionals:

Engaging women in implantology
Empowering women to follow their ambitions
and advance into leadership roles



Why?

Women account for an increasing percentage of dental school graduates, and only a minority become active in implant dentistry. If this trend continues, patient access to implant therapy and maintenance is at risk. There is also a shortage of female role models: surgeons, speakers, key opinion leaders and practice owners. We aim to engage women at all stages of their career in implantology and inspire them to advance as leaders and role models.

By building a strong global community, supported by the biggest players in Implantology, we will make a change.

How?

1. **Raising awareness** of the situation and featuring female talents.
2. **Networking opportunities** at WIN events, dental congresses and online.
3. **State-of-the-art implant dentistry** via the WIN classroom, summaries of scientific evidence and skill-building workshops.
4. **Mentorship** with WIN Circles, online mentoring, and leadership tips.

Your benefits as a WIN member



Annual WIN events*
Such as WIN Summits and WIN get togethers.



Scientific Highlights
Updates on the latest findings in implant dentistry.



Professional development
Skill-building workshops
Visibility and lecturing opportunities for role models



Free access to the WIN Classroom
High quality clinical practice recommendations from the ITI Academy.



WIN online community
Where you can network and interact with peers as well as benefit from mentoring in a dedicated online group.



20% reduction on first year ITI membership
Digital membership (not cumulative with other discounts).

*Might be free of charge or with additional fee



Local WIN
Additional offerings from your local WIN Community such as WIN Talks, Implantology Day and more.

“Patients worldwide need more women to be engaged in implant dentistry, and female dentists need the strength and encouragement that WIN provides.”
Charlotte Stilwell, ITI President Elect

supported by:



Scan to
join WIN
today.



win@straumann.com
www.straumann-group.com/win

REFERENCES

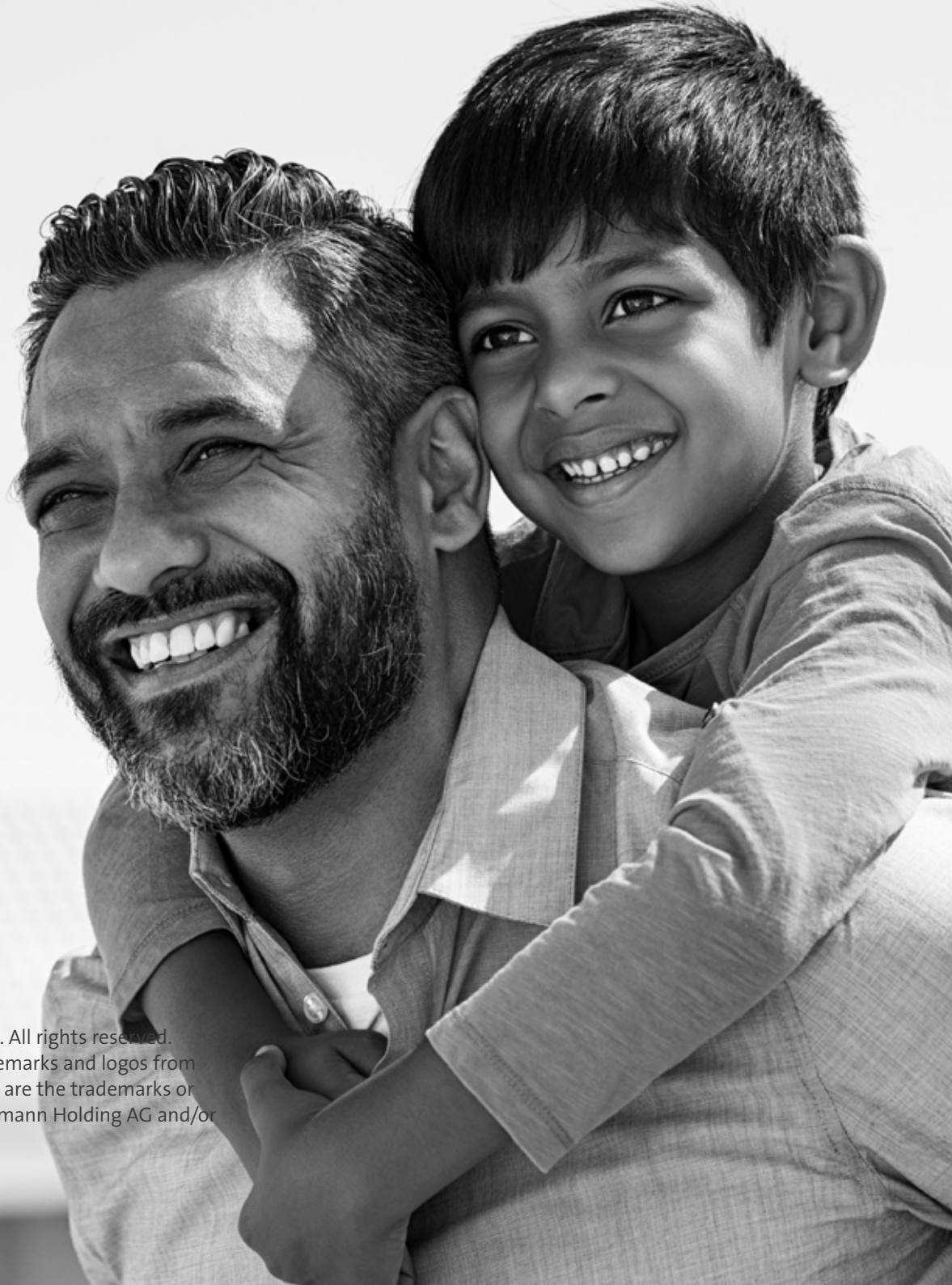
Excellence in Immediacy
1 Chiapasco M, Casentini P, Zaniboni M, Corsi E, Anello T. Titanium-zirconium alloy narrow-diameter implants (Straumann Roxolid[®]) for the rehabilitation of horizontally deficient edentulous ridges: prospective study on 18 consecutive patients. Clin Oral Implants Res. 2012 Oct;23(10):1136-41. 2 Quirynen M, Al-Nawas B, Meijer HJA, Razavi A, Reichert TE, Schimmel M, Storelli S, Romeo E. Small-diameter titanium Grade IV & titanium-13zirconium implants in edentulous mandibles: 3-year results from a double-blind, randomized controlled trial. Clin Oral Implants Res. 2015 Jul;26(7):831-40.

Edentulous Patients
11 Norm ASTM F67 (states min. tensile strength of annealed titanium). 2 http://www.straumann.com/science-roxolid.html. 3 Fischer K, Stenberg T.: Prospective 10-year cohort study based on a randomized controlled trial (RCT) on implant-supported full-arch maxillary prostheses. Part 1: sandblasted and acid-etched implants and mucosal tissue. Clin Implant Dent Relat Res. 2012 Dec;14(6):808-15. 4 van Velzen FJ, Ofec R, Schulten EA, Ten Bruggenkate CM. 10-year survival rate and the incidence of peri-implant disease of 374 titanium dental implants with an SLA surface: a prospective cohort study in 177 fully and partially edentulous patients. Clin Oral Implants Res. 2015 Oct;26(10):1121-8 5 Cochran DL, Jackson JM, Bernard JP, ten Bruggenkate CM, Buser D, Taylor TD, Weingart D, Schoolfield JD, Jones AA, Oates TW Jr. A 5-year prospective multicenter study of early loaded titanium implants with a sandblasted and acid-etched surface. Int J Oral Maxillofac Implants. 2011 Nov-Dec;26(6):1324-32. 6 Cochran D, Oates T, Morton D, Jones A, Buser D, Peters F. Clinical field trial examining an implant with a sand-blasted, acid-etched surface. J Periodontol. 2007 Jun;78(6):974-82. 7 Bornstein MM, Schmid B, Belser UC, Lussi A, Buser D. Early loading of non-submerged titanium implants with a sandblasted and acid-etched surface. 5-year results of a prospective study in partially edentulous patients. Clin Oral Implants Res. 2005 Dec;16(6):631-8. 8 Roccuzzo M, Aglietta M, Bunino M, Bonino L. Early loading of sandblasted and acid-etched implants: a randomized-controlled double-blind split-mouth study. Five-year results. Clin Oral Implants Res. 2008 Feb;19(2):148-52. 9 Derks J, Schaller D, Håkansson J, Wennström JL, Tomasi C, Berglundh T. Effectiveness of Implant Therapy Analyzed in a Swedish Population: Prevalence of Peri-implantitis. J Dent Res. 2016 Jan;95(1):43-9. doi 10 Calvo-Guirado JL, Lopez Torres JA, Dard M, Javed F, Perez-Albacete Martinez C, Mate Sanchez de Val JE. Evaluation of extrashort 4-mm implants in mandibular edentulous patients with reduced bone height in comparison with standard implants: a 12 month results. Clin Oral Impl Res 27, 2016, 867-874. 11 Piano S, Romeo E, Sbricoli L, Pisoni G, Cea N, Lops D. Simplified procedure for the immediate loading of a complete fixed prosthesis supported by four implants in the maxillary jaw: a 2-year prospective study. Clin. Oral Impl. Res. 00, 2015, 1-7. 12 Müller F et al. Small-diameter titanium grade IV and titanium-zirconium implants in edentulous mandibles: five-year results from a double-blind, randomized controlled trial. (2015). BMC Oral Health. 2015 Oct 12;15(1):123. 13 Al-Nawas B, Domaga-ła P, Fragola G, Freiburger P, ^ Ortiz-Vigón A, Rousseau P, Tondela J. A prospective non-interventional study to evaluate survival and success of reduced diameter implants made from titanium-zirconium alloy. J Oral Impl, submitted. PMID:24666383. 14 Nicolau P, Guerra F, Reis R, Krafft T, Benz K , Jackowski J. 10-year results from a randomized controlled multicenter study with immediately and early loaded SLActive implants in posterior jaws. Presented at 25th Annual Scientific Meeting of the European Association of Osseointegration – 29 Sep – 1 Oct 2016. 15 Paris Heberer S, Kilic S, Hossamo J, Raguse J-D, Nelson K. Rehabilitation of irradiated patients with modified and conventional sandblasted, acid-etched implants: preliminary results of a split-mouth study. Clin. Oral Impl. Res. 22, 2011; 546–551. 16 Nelson K, Stricker A, Raguse J-D and Nahles S (2016). Rehabilitation of irradiated patients with chemically modified and conventional SLA implants: a clinical clarification. J Oral Rehabil, 43: 871–872. doi:10.1111/joor.12434. 17 Machuca G, Cabrera JJ. “A prospective, case-control clinical study of titanium-zirconium alloy implants with hydrophilic surface in patients with Type 2 diabetes mellitus” Manuscript submitted. 18 Buser D et al. (2017). Development of Implant Stability Quotient values of implants placed with simultaneous sinus floor elevation - results of a prospective study with 109 implants. Clin Oral Implants Res. 2017 Jan;28(1):109-115. doi: 10.1111/clr.12768. Epub 2016 Jan 16. A Proline-Rich Peptide Mimic Effects of EMD in Rat Oral Mucosal Incisional Wound Healing. 19 Villa O, Wohlfahrt JC, Mdla I, Peltzold C, Reseland JE, Snead ML, Lyngstadaas SP. J Periodontol. 2015 Dec;86(12):1386-95. 20 Eckert SE, Hueler G, Sandler N, Elkattah R, McNeil DC. Immediately Loaded Fixed Full-Arch Implant-Retained Prosthesis: Clinical Analysis When Using a Moderate Insertion Torque. Int J Oral Maxillofac Implants. 2019 Jan 31. 21 Tuminelli FJ, Walter LR, Neugarten J, Bedrossian E. Immediate loading of zygomatic implants: A systematic review of implant survival, prosthesis survival and potential complications. Eur J Oral Implantol. 2017;10 Suppl 1:79-87. 22 Fatigue Testing Report – ZAGA Implant System. 23 Boyes-Varley JG, Howes DG, Lownie JF, Blackbeard GA. Surgical Modifications to the Branemark Zygomaticus Protocol in the treatment of the severely resorbed Maxilla: A Clinical Report. Int J Oral Maxillofac. Implants 2003;18:232–237. 24 Wang F, Monje A, Lin GH, Wu Y, Monje F, Wang HL, Davó R. Reliability of four zygomatic implantsupported prostheses for the rehabilitation of the atrophic maxilla: a systematic review. Int J Oral Maxillofac Implants. 2015 Mar-Apr;30(2):293-8. 25 Jung RE, Al-Nawas B, Araujo M, Avila-Ortiz G, Barter S, Brodala N, Chappuis V, Chen B, De Souza A, Almeida RF, Fickl S, Finelle G, Ganeles J, Gholami H, Hammerle C, Jensen S, Jokstad A, Katsuyama H, Kleinheinz J, Kunavisarut C, Mardas N, Monje A, Papaspyridakos P, Payer M, Schiegnitz E, Smeets R, Stefanini M, Ten Bruggenkate C, Vazouras K, Weber HP, Weingart D, Windisch P. Group 1 ITI Consensus Report: The influence of implant length and design and medications on clinical and patient-reported outcomes - Clin Oral Implants Res. 2018 Oct;29 Suppl 16:69-77. 26 Aparicio C, López-Piriz R, Albrektsson T. ORIS Criteria of Success for the Zygoma-Related Rehabilitation: The (Revisited) Zygoma Success Code. Int J Oral Maxillofac Implants 2020;35:366–378. 27 Aparicio C, Balshi T J, Chow J, David L, Davo R, McLellan G, Nicolopoulos C, Peñarrocha M, Pikos M A, Polido W, Zarrinkelk H, Malevez C. The Zygomatic Osteotomy Revisited. ZAGA Consensual Guide for Zygomatic Surgery Decision Taking. Int J Oral Maxillofac Implants 2020 (accepted).

Prosthetic Efficiency
1 Kajiwara N, Masaki C, Mukaibo T, Kondo Y, Nakamoto T, Hosokawa R (2015). Soft tissue biological response to zirconia and metal implant abutments compared with natural tooth: microcirculation monitoring as a novel bioindicator. Implant Dent 24(1):37-41 2 Degidi M, Artese L, Scarano A, Perrotti V, Gehrke P, Piattelli A. Inflammatory infiltrate, microvessel density, nitric oxide synthase expression, vascular endothelial growth factor expression, and proliferative activity in peri-implant soft tissues around titanium and zirconium

oxide healing caps. J Periodontol. 2006 Jan;77(1):73-80 3 Liñares A, Gríze L, Muñoz F, Pippenger BE, Dard M, Domken O, Blanco-Carrión J. Histological assessment of hard and soft tissues surrounding a novel ceramic implant: a pilot study in the minipig. J Clin Periodontol. 2016 Jun;43(6):538-46. 4 S. Roehling, M. Astasov-Frauenhoffer, I. Hauser-Gerspach, O. Braissant, H. Engelhardt, T. Waltimo, M. Gahlert. In vitro biofilm formation on commercially available machined and micro-roughened titanium and zirconia implant surfaces. Clin. Oral Impl. Res. 26 (Suppl. 12), 2015 5 Scarano A, Piattelli M, Caputi S, Favero GA, Piattelli A. Bacterial adhesion on commercially pure titanium and zirconium oxide disks: an in vivo human study. J Periodontol. 2004 Feb;75(2):292-6.

Esthetic Dentistry
1 Sculean A, Kiss A, Miliauskaite A, Schwarz F, Arweiler NB, Hannig M. Ten-year results following treatment of intra-bony defects with enamel matrixproteins and guided tissue regeneration. J Clin Periodontol. 2008 Sep;35(9):817-24. 2 McGuire MK, Scheyer ET, Nunn M. Evaluation of human recession defects treated with coronally advanced flaps and either enamel matrix derivative or connective tissue: comparison of clinical parameters at 10 years.J Periodontol. 2012 Nov;83(11):1353-62. 3 Jepsen S, Heinz B, Jepsen K, Arjomand M, Hoffmann T, Richter S, Reich E, Sculean A, Gonzales JR, Bödeker RH, Meyle J. A randomized clinical trial comparing enamel matrix derivative and membrane treatment of buccal Class II furcation involvement in mandibular molars. Part I: Study design and results for primary outcomes. J Periodontol. 2004 Aug;75(8):1150-60. 4 Tonetti MS, Fourmouis I, Suvan J, Cortellini P, Bragger U, Lang NP. Healing, postoperative morbidity and patient perception of outcomes following regenerative therapy of deep intrabony defects. J Clin Periodontol 2004;31:1092-1098. 5 Ozelcik O, Haytac MC, Seydaoglu G. Immediate post-operative effects of differentperiodontal treat-ment modalities on oral health-related quality of life: a randomized clinical trial. J Clin Periodontol. 2007 Sep;34(9):788-96. 6 Wennström JL, Lindhe J. Some effects of enamel matrix proteins on wound healing in the dento-gingival region. J Clin Periodontol. 2002 Jan;29(1):9-14. 7 Lee JH, Kim DH, Jeong SN. Comparative assessment of anterior maxillary alveolar ridge preservation with and without adjunctive use of enamel matrix derivative: A randomized clinical trial. Clin Oral Implants Res. 2020;31(1):1-9. doi:10.1111/clr.13530. 8 Shin SH, Cueva MA, Kerns DG, Hallmon WW, Rivera-Hidalgo F, Nunn ME. A comparative study of root coverage using acellular dermal matrix with and without enamel matrix derivative. J Periodontol. 2007;78(3):411-421. doi:10.1902/jop.2007.060170. 9 Pilloni A, Paolantonio M, Camargo PM. Root coverage with a coronally positioned flap used in com-bination with enamel matrix derivative: 18-month clinical evaluation. J Periodontol. 2006 Dec;77(12):2031-9. 10 Górski B, Górská R, Wysokińska-Miszczuk J, Kaczyński T. Tunnel technique with enamel matrix de-rivative in addition to subepithelial connective tissue graft compared with connective tissue graft alone for the treatment of multiple gingival recessions: a randomized clinical trial [published online ahead of print, 2020 May 7]. Clin Oral Investig. 2020;10.1007/s00784-020-03312-6. doi:10.1007/s00784-020-03312-6. 11 Shujaa Addin A, Akizuki T, Matsuura T, Hoshi S, Ikawa T, Maruyama K, Ono W, Fukuba S, Izumi Y. Histological healing after nonsurgical periodontal treatment with enamel matrix derivatives in canine experimental periodontitis. Odontology. 2018 Jul;106(3):289-296. 12 Mellonig JT, Valderrama P, Gregory HJ, Cochran DL. Clinical and histologic evaluation of non-surgical periodontal therapy with enamel matrix derivative: a report of four cases. J Periodontol. 2009 Sep;80(9):1534-40. 13 Graziani F, Gennai S, Petrini M, Bettini L, Tonetti M. Enamel matrix derivative stabilizes blood clot and improves clinical healing in deep pockets after flapless periodontal therapy: A Randomized Clinical Trial. J Clin Periodontol. 2019 Feb;46(2):231-240. 14 Aimetti M, Ferrarotti F, Mariani GM, Romano F. A novel flapless approach versus minimally invasive surgery in periodontal regeneration with enamel matrix derivative proteins: a 24-month randomized controlled clinical trial. Clin Oral Investig. 2017 Jan;21(1):327-337. 15 Wennström JL, Lindhe J. Some effects of enamel matrix proteins on wound healing in the dento-gingival region. J Clin Periodontol. 2002 Jan;29(1):9-14. 16 Rothamel et al. 2012, Biocompatibility and Biodegradation of a Native, Porcine Pericardium Membrane. Results from in vitro/in vivo Examination, J. Int J Oral Maxillofac Implants, 27(1):146-54. 17 Barbeck et al. 2015, Porcine dermis and pericardium-based, non-cross-linked materials induce multinucleated giant cells after their in vivo implantation: A physiological reaction? J Oral Implantol., 41(6):e267-81. 18 Kajiwara N, Masaki C, Mukaibo T, Kondo Y, Nakamoto T, Hosokawa R. Soft tissue biological response to zirconia and metal implant abutments com-pared with natural tooth: microcirculation monitoring as a novel bioindicator. Implant Dent 2015;24(1):37-41 19 Glauser R, Sailer I, Wohlwend A, Studer S, Schibli M, Schärer P. Experimental zirconia abutments for implant-supported single-tooth restorations in esthetically demanding regions: 4-year results of a prospective clinical study. Int J Prosthodont. 2004 May-Jun;17(3):285-90. 20 Institut Straumann AG, Straumann® PURE Ceramic Implants: A 100 % proof test ensures reliable implant strength. 03/14 490.028/en/B/001. www.straumann.com. 21 Bormann KH, Gellrich NC, Kniha H, Dard M, Wieland M, Gahlert M. Biomechanical evaluation of a microstructured zirconia implant by a removal torque comparison with a standard Ti-SLA implant. Clin Oral Implants Res. 2012 Oct;23(10):1210-6. doi: 10.1111/j.1600-0501.2011.02291.x. Epub 2011 Nov 14. 22 Gahlert M, Roehling S, Sprecher CM, Kniha H, Milz S, Bormann K. In vivo performance of zirconia and titanium implants: a histomorphometric study in mini pig maxillae. Clin Oral Implants Res. 2012 Mar;23(3):281-6. doi: 10.1111/j.1600-0501.2011.02157.x. 23 Gahlert M1, Röhling S, Wieland M, Eichhorn S, Küchenhoff H, Kniha H A comparison study of the osseointegra-tion of zirconia and titanium dental implants. A biomechanical evaluation in the maxilla of pigs Clin Implant Dent Relat Res. 2010 Dec;12(4):297-305. Doi: 10.1111/j.1708-8208.2009.00168.x. 24 Lee C T et al., Journal of Dentistry. 2017;62:1–12 25 Gahlert M et al. Clin Oral Implants Res. 2012 Mar;23(3):281-6. 26 Bormann KH et al. Clin. Oral Impl. Res. 23, 2012, 1210–1216 27 Gahlert M et al. Clin Implant Dent Relat Res. 2010 Dec;12(4):297- 305. 28 Gahlert M et al. Clin Oral Implants Res., Volume 27 (12) – Dec 1, 2016. 29 Janner SFM et al. Clin Oral Implants Res. 2018 Mar;29(3):277- 289. 30 Bormann KH et al. BMC Oral Health. 2018 Nov 1;18(1):181. 31 Roehling S et al. J of Periodont 2017 Mar;88(3):298-307. 32 Linares A et al. J Clin Periodontol 2016; 43: 538–546 33 Buser D et al. Clin Implant Dent Relat Res. 2012 Dec;14(6):839- 51. 34 Roccuzzo M et al. Clin Oral Implants Res. 2014 Oct;25(10):1105-12 35 van Velzen FJ et al Clin Oral Implants Res. 2015 Oct;26(10):1121-8. 36 Fischer K et al. Clin Implant Dent Relat Res. 2012 Dec;14(6):808-15 37 J. Derks et al. J Dent Res. 2015 Mar;94(3 Suppl):445-515. 38 Bormann KH et al. Publication in preparation 39 Alomrani AN et al. Clin Oral Implants Res. 2003 Jun;14(3):251-62 40 Gigandet M et al. Clin Implant Dent Relat Res. 2014 Apr;16(2):303-11. 41 Joda T et al. Int J Oral Maxillofac Implants. 2015 Nov-Dec;30(6):1272-9. 42 Kajiwara N et al. Implant Dent 2015;24(1):37-41 43 Heberer S et al. Clin. Oral Impl. Res. 22, 2011; 546–551. 44 C. Nack et al. Journal of Oral Rehabilitation 2015 42; 57—64. 45 Nelson, K et al. J Oral Rehabil, 43: 871–872. 46 Tonetti MS et al. J Clin Periodontol. 2002 Apr;29(4):317-25. 47 Pilloni A et al. J Periodontol. 2006 Dec;77(12):2031-9 48 McGuire MK et al. J Periodontol. 2012 Nov;83(11):1353-62.



International Headquarters

Institut Straumann AG
Peter Merian-Weg 12
CH-4002 Basel, Switzerland
Phone +41 (0)61 965 11 11
Fax +41 (0)61 965 11 01
www.straumann.com

© Institut Straumann AG, 2022. All rights reserved.
Straumann® and/or other trademarks and logos from
Straumann® mentioned herein are the trademarks or
registered trademarks of Straumann Holding AG and/or
its affiliates.

Straumann News
490.734/en/A/00 01/22