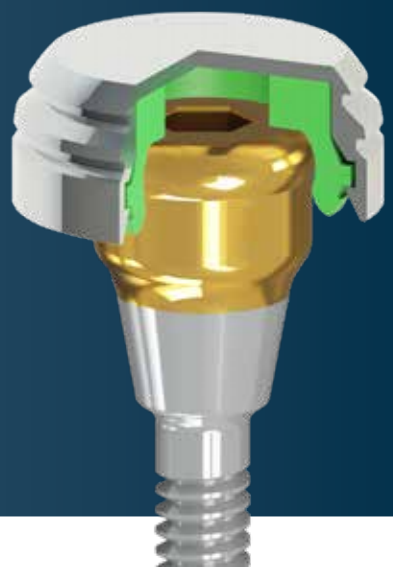




» MedentiLOC & Novaloc®
Overview Brochure «



The top 10 Reasons to choose Novaloc®

1 Longer Life Span & Innovative PEEK inserts

The retention inserts are made of high-performance polymer PEEK and can optimally absorb lateral pressure with the patented design. The radial anchoring technology prevents damage to the retention inserts.



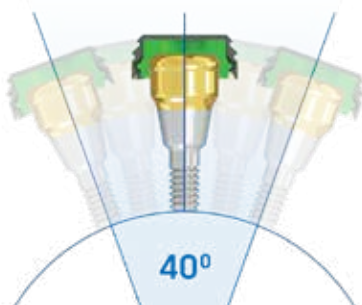
2 Outstanding Handling

Novaloc® retention inserts can be inserted and removed within 5 seconds. Accessories such as the very low forming matrix and the easy to use matrix housing extractor guarantee a stress-free handling.

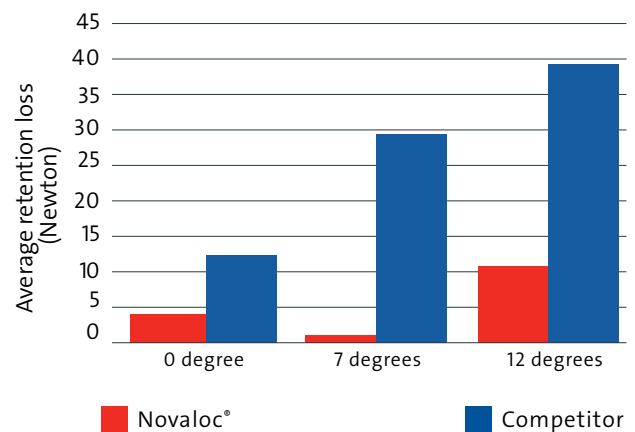


3 Variable Angled Compatibility

You have the choice between 6 retention inserts with retention forces from ~0.5lbs to ~5.5lbs, including retention performance for divergences up to 20 degrees per implant site.



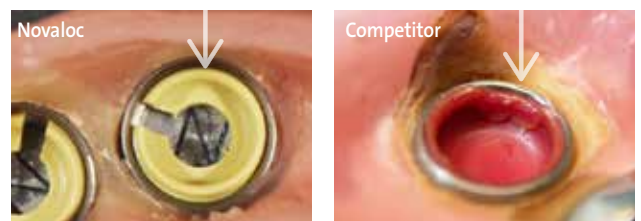
4 Less Retention Loss



The retention inserts convince with low wear even with strong tangential friction caused by the divergent arrangement of the abutments.

Reference: Novaloc matrix system - Outstanding performance in divergent situations (Study report, 03.2014)

5 Clearly Less Wear and Tear



The harder PEEK liner is designed to engage more precisely, and is less susceptible to deforming.

6 Only Four Replacement Males



Novaloc® only requires 4 replacement males in 80% of all cases. Easy to understand color coding according to retention value. The lighter the color, the lighter the retention. The darker the color, the heavier the retention.

7 New Forming / Fixing Matrix

Used for accurate positioning in the mouth during impression taking. Also, its smaller size, and strong retention makes it versatile. The multi-purpose forming/fixing matrix can be used in base plates, denture try-ins, and bite blocks as well.



8 5-second Matrix Housing Extractor



Special design: No more hot fingers!



1. Heat extraction head

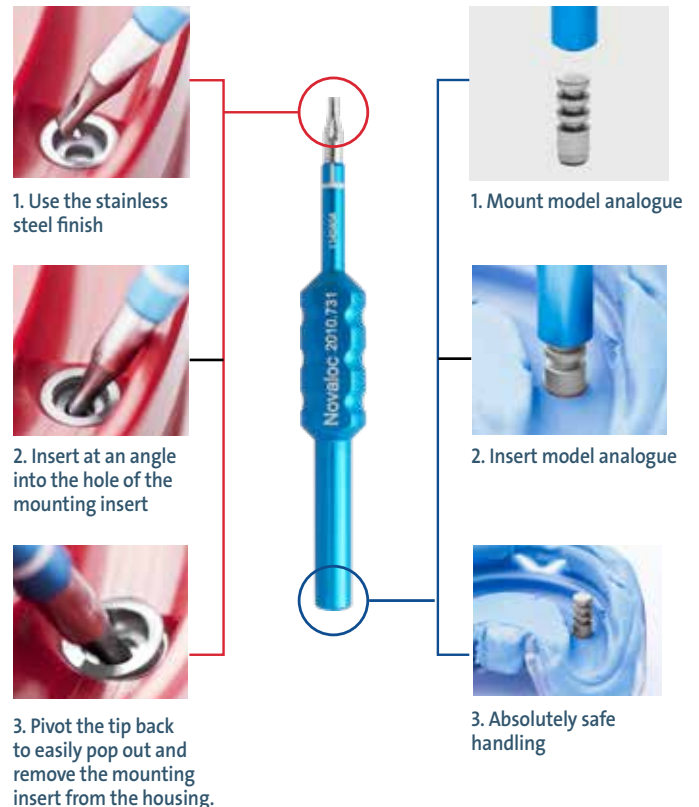


2. Heat matrix housing briefly



3. Apply leverage to remove matrix housing

9 Reposition Aid and Demounting Tool


















10 The User-Friendly Equipment Box



- No extra caps in inventory
- Ensures overview and order
- No mixing when the cover is closed
- Ordering number legible in the cover
- Three special instruments for all sorts of manipulations

MedentiLOC and Novaloc® Product Overview

Sample MedentiLOC abutments. See Medentika Catalog for full offerings.	Part No.	Description	Specifications	Amount Per Pkg
	See Chart on Pg. 6 for abutment listing.	MedentiLOC abutments are available in various gingiva heights for both straight and angled. See Chart on pg. 6 for for options.	<ul style="list-style-type: none"> • 3 Year TiN coating warranty • 3.86 mm Lobe Diameter *Uses 1.26 mm Ball Driver for Angled abutments *Uses 1.26 mm/.050" driver for straight abutments 	1 pc
	2010.101-NOV	Novaloc® Equipment Box	Incl. 3 tools (without load)	1 pc
	2013.901	Altus™ Gingiva Height Measuring Tool	Stainless Steel, PEEK	1 pc
	2010.601-NOV	Novaloc® Processing package titanium	<ul style="list-style-type: none"> • Titanium matrix housing (1 pc) • Retention insert white (1 pc) • Retention insert yellow (1 pc) • Retention insert green (1 pc) • Mounting collar, silicone (1 pc) 	2 pcs
	2010.611-NOV	Novaloc® Processing package PEEK	<ul style="list-style-type: none"> • PEEK matrix housing (1 pc) • Retention insert white (1 pc) • Retention insert yellow (1 pc) • Retention insert green (1 pc) • Mounting collar, silicone (1 pc) 	2 pcs
	2010.701-NOV	Novaloc® Matrix housing, titanium (incl. mounting insert)	Matrix housing: titanium Mounting insert: POM	4 pcs
	2010.702-NOV	Novaloc® Matrix housing, PEEK (incl. mounting insert)	Matrix housing: PEEK Mounting insert: POM	4 pcs
	2010.703-NOV special accessory	Novaloc® Matrix housing, titanium with extended attachment option (incl. mounting insert)	Matrix housing: titanium Mounting insert: POM	4 pcs
	2010.710-NOV special accessory	Novaloc® Retention insert red	PEEK Retention force: ~0.5 lbs (~300 g)	4 pcs
	2010.711-NOV	Novaloc® Retention insert white	PEEK Retention force: ~1.5 lbs (~750 g)	4 pcs
	2010.712-NOV	Novaloc® Retention insert yellow	PEEK Retention force: ~2.5 lbs (~1200 g)	4 pcs
	2010.713-NOV	Novaloc® Retention insert green	PEEK Retention force: ~3.5 lbs (~1600 g)	4 pcs

	Part No.	Description	Specifications	Amount Per Pkg
	2010.714-NOV	Novaloc® Retention insert blue	PEEK Retention force: ~4.5 lbs (~2100 g)	4 pcs
	2010.715-NOV special accessory	Novaloc Retention insert black	PEEK Retention force: ~5.5 lbs (~2550 g)	4 pcs
	56	MedentiLOC Model Analog - Straight	Stainless steel	1 pc
	57	MedentiLOC Model Analog - 15 degrees	Stainless Steel for Angled MedentiLOC	1 pc
	2010.720-NOV	Novaloc Model Analog - 15 degree Angled	Anodized Aluminum For Angled GM™ attachment	4 Pcs
	2010.721-NOV	Novaloc Model Analog - Straight	Anodized Aluminum	4 Pcs
	2010.722-NOV	Novaloc Forming / fixing matrix	PEEK	4 pcs
	2010.723-NOV	Novaloc Processing spacer, white	POM C	4 pcs
	2010.724-NOV	Novaloc Mounting collar, silicone	Silicone	10 pcs
	2010.725-NOV	Novaloc Mounting/processing insert	PEEK	4 pcs
	2010.731-NOV	Novaloc Demounting tool for mounting inserts + model analogue reposition aid (blue)	Aluminum, steel	1 pc
	2010.741-NOV	Novaloc Mounting and demounting tool for retention inserts (brown)	Aluminum, steel	1 pc
	2010.751-NOV	Novaloc Matrix housing extractor (grey)	Aluminum, steel	1 pc
	M 03-1 M 09-1 M 10-1 M 11-1 M 10-7 M 03-7	Placement instrument Hex 1.26 Contra-angle long Contra-angle short Manual and ratchet long Manual and ratchet short Manual and Ratchet for Angled Contra-angle for angled	Versions: Contra-angle, Manual and ratchet, Manual and ratchet Hardened stainless steel	1 pc
	M 12 M 14	Torque ratchet Contra Angle to Torque wrench/ manual adapter	• With infinitely variable torque setting • 10-40 Ncm • Hardened stainless steel	1 pc
	USK2010.203	Complete Novaloc Starter Kit	Includes: 2010.101-NOV 2010.701-NOV 2010.702-NOV 2010.710-NOV 2010.711-NOV 2010.712-NOV 2010.713-NOV 2010.714-NOV 2010.715-NOV 2010.722-NOV 2010.723-NOV 2010.724-NOV 56 x 4	1 Kit
	USK2010.103	Beginner Novaloc Starter Kit	Includes: 2010.101-NOV x 1 2010.601-NOV x 2 (4 pks total)	1 Kit

MedentiLOC Abutment Reference Chart

Compatibility	Platform Size	Gingiva Height					Torque
BIOMET 3i / Certain®*		1.5 mm	2.5 mm	3.5 mm	4.5 mm	5.5 mm	20 Ncm
	D 3.4	H 2000	H 2100	H 2200	H 2300	H 2400	
	D 4.1	H 2010	H 2110	H 2210	H 2310	H 2410	
	D 5.0		H 2120	H 2220	H 2320	H 2420	

Compatibility	Platform Size	Gingiva Height					Torque
BIOMET 3i / External Hex		1.5 mm	2.5 mm	3.5 mm	4.5 mm	5.5 mm	35 Ncm
	D 3.4	I 2000	I 2100	I 2200	I 2300	I 2400	
	D 4.1	I 2010	I 2110	I 2210	I 2310	I 2410	
	D 5.0	I 2020	I 2120	I 2220	I 2320	I 2420	

Compatibility	Platform Size	Gingiva Height					Torque
DENTSPLY Implants / ANKYLOS® C/X		1.0 mm	2.0 mm	3.0 mm	4.0 mm	5.0 mm	25 Ncm
	D 3.5-7.0	Y 2000	Y 2100	Y 2200	Y 2300	Y 2400	

Compatibility	Platform Size	Gingiva Height					Torque
DENTSPLY Implants / ASTRA TECH OsseoSpeed®* TX		1.5 mm	2.5 mm	3.5 mm	4.5 mm	5.5 mm	25 Ncm Straight 20 Ncm Angled
	D 3.5/4.0	S 2000	S 2100	S 2200	S 2300	S 2400	
		1.0 mm	2.0 mm	3.0 mm	4.0 mm	5.0 mm	
	15° Angled	S 2500	S 2600	S 2700	S 2800	S 2900	
		1.5 mm	2.5 mm	3.5 mm	4.5 mm	5.5 mm	
	D 4.5/5.0	S 2020	S 2120	S 2220	S 2320	S 2420	

Compatibility	Platform Size	Gingiva Height					Torque
DENTSPLY Implants / XiVE®* S		1.0 mm	2.0 mm	3.0 mm	4.0 mm	5.0 mm	25 Ncm
	D 3.4	T 2000	T 2100	T 2200	T 2300	T 2400	
	15° Angled	T 2500-1	T 2600-1	T 2700-1	T 2800-1	T 2900-1	
	D 3.8	T 2005	T 2105	T 2205	T 2305	T 2405	
	15° Angled	T 2505-1	T 2605-1	T 2705-1	T 2805-1	T 2905-1	
	D 4.5	T 2010	T 2110	T 2210	T 2310	T 2410	
	15° Angled	T 2510-1	T 2610-1	T 2710-1	T 2810-1	T 2910-1	
	D 5.5	T 2020	T 2120	T 2220	T 2320	T 2420	

Additional products will be added soon. For more information go to www.medentika.us
Products indicated with ® are registered brand names of respective manufacturers

Compatibility	Platform Size	Gingiva Height					Torque
		1.0 mm	2.0 mm	3.0 mm	4.0 mm	5.0 mm	
Nobel Biocare/ NobelReplace®* Tapered		E 2000	E 2100	E 2200	E 2300	E 2400	35 Ncm
	NP 3.5	E 2500-1	E 2600-1	E 2700-1	E 2800-1	E 2900-1	
	15° Angled, Type 1	E 2500-2	E 2600-2	E 2700-2	E 2800-2	E 2900-2	
	15° Angled, Type 2	E 2010	E 2110	E 2210	E 2310	E 2410	
	RP 4.3	E 2510-1	E 2610-1	E 2710-1	E 2810-1	E 2910-1	
	15° Angled, Type 1	E 2510-2	E 2610-2	E 2710-2	E 2810-2	E 2910-2	
	15° Angled, Type 2	E 2020	E 2120	E 2220	E 2320	E 2420	
	WP 5.0	E 2030	E 2130	E 2230	E 2330	E 2430	
D 6.0							

Compatibility	Platform Size	Gingiva Height					Torque
		1.5 mm	2.5 mm	3.5 mm	4.5 mm	5.5 mm	
Nobel Biocare/ NobelActive®* NobelReplace® *Conical		F 2000	F 2100	F 2200	F 2300	F 2400	35 Ncm
	NP 3.5	F 2500-1	F 2600-1	F 2700-1	F 2800-1	F 2900-1	
	15° Angled	F 2010	F 2110	F 2210	F 2310	F 2410	
	RP 4.3	F 2510-1	F 2610-1	F 2710-1	F 2810-1	F 2910-1	
	15° Angled						

Compatibility	Platform Size	Gingiva Height					Torque
		1.5 mm	2.5 mm	3.5 mm	4.5 mm	5.5 mm	
Nobel Biocare/ Brånemark System®*		K 2000	K 2100	K 2200	K 2300	K 2400	35 Ncm
	NP 3.5	K 2010	K 2110	K 2210	K 2310	K 2410	
	RP 4.1	K 2020	K 2120	K 2220	K 2320	K 2420	
	WP 5.1						

Compatibility	Platform Size	Gingiva Height					Torque
		1.0 mm	2.0 mm	3.0 mm	4.0 mm	5.0 mm	
Straumann® / Tissue Level		N 2030	N 2130	N 2230	N 2330	N 2430	35 Ncm
	NNC 3.5						
		0.5 mm	1.5 mm	2.5 mm	3.5 mm	4.5 mm	
	RN 4.8	N 2010	N 2110	N 2210	N 2310	N 2410	
	15° Angled	N 2510	N 2610	N 2710	N 2810	N 2910	
	WN 6.5	N 2020	N 2120	N 2220	N 2320	N 2420	

Compatibility	Platform Size	Gingiva Height					Torque
		1.0 mm	2.0 mm	3.0 mm	4.0 mm	5.0 mm	
Zimmer Dental/ Tapered Screw-Vent®*		R 2000	R 2100	R 2200	R 2300	R 2400	30 Ncm
	D 3.5	R 2500-1	R 2600-1	R 2700-1	R 2800-1	R 2900-1	
	15° Angled	R 2010	R 2110	R 2210	R 2310	R 2410	
	D 4.5	R 2020	R 2120	R 2220	R 2320	R 2420	
	D 5.7						

Additional products will be added soon. For more information go to www.medentika.us
Products indicated with ® are registered brand names of respective manufacturers

»» Passion for
Precision ««

Distributed by Straumann USA

MEDENTIKA®
A Straumann Group Brand
60 Minuteman Road
Andover, MA 01810
Phone 800/448 8168 (US)
Fax 978/747 2490
www.medentika.us

USLIT.2045 9/21 V2 PMR
medentika.us/ifu

© MEDENTIKA® 2021. All rights reserved.
MEDENTIKA® and/or other trademarks and logos from MEDENTIKA® that are mentioned herein are the trademarks or registered trademarks of MEDENTIKA® and/or its affiliates. All rights reserved. Products indicated with ® are registered brand names of respective manufacturers.



 **MEDENTIKA®**
A Straumann Group Brand