

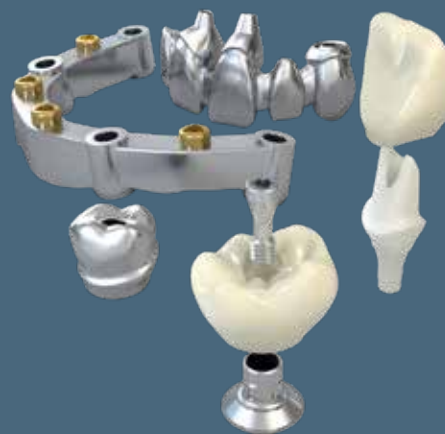
➤➤ NOW AVAILABLE

Metal scanbodies designed for authentic Straumann® restorations! ⬅️

MEDENTiKA®, a Straumann Group Brand, has created metal scanbodies for the authentic Straumann workflow.

Benefits of the Medentika Metal scanbodies:

- Ti Grade 5 for multiple usage
- Autoclaveable for IO scanning
- Radiopaque for ensuring accurate seating
- Laser etched for easy ID
- Same design for IO and Model scanning
- Antireflective Anodized surface, no powder needed
- Compatible with CARES/DWOS, 3Shape (Centralized production only)



Compatibility	Implant connection	Article number	Torque	Length
Straumann / Tissue Level	NNC 3.5	N 1430	10 Ncm	12.80mm
Straumann / Tissue Level	RN 4.8	N 1410	10 Ncm	13.16mm
Straumann / Tissue Level	WN 6.5	N 1420	10 Ncm	13.26mm
Straumann / Bone Level	SC 2.9	L 1420	10 Ncm	14.24mm
Straumann / Bone Level	NC 3.3	L 1400	10 Ncm	13.09mm
Straumann / Bone Level	RC 4.1 & 4.8	L 1410	10 Ncm	14.73mm
Straumann / BLX	RB/WB 3.5 – 6.0	LX 1400	10 Ncm	14.70mm
Straumann / Pure	RD 4.8	PR 1400	10 Ncm	14.50mm
Straumann / Bone Level	3.5 NC/RC SRA	SRA 35	15 Ncm	10.03mm
Straumann / Bone Level	4.6 RC SRA	SRA 46	15 Ncm	10.03mm

\$59
each



➤➤ ASK YOUR STRAUMANN REP FOR SPECIAL OFFERS

MEDENTiKA®
A Straumann Group Brand

Product specification

TL NNC



TL RN



TL WN



BL NC



BL RC



BLX



BL SC



Pure



SRA 3.5



SRA 4.6



GENERAL WORKFLOW OVERVIEW:

Driver:

Straumann SCS Driver

Scanning:

- 1 **IO:** Scan with any IO scanner that generates an open STL file. No anti-reflective powder needed. X-ray to confirm it is fully seated. Sterilizable. Re-useable. Flat side facial/buccal.
- 2 **Lab:** Scan with any open STL scanner. No powder needed. Re-useable. Flat side facial/buccal. Steam clean.

Metal Scanbodies	DWOS/CARES	3Shape	Exocad
Local Model Print	Yes	-	-
Centralized Model Print	Yes	Yes*	-
Local Production	Yes	-	-
Centralized Production	Yes	Yes*	-

*Must use latest Centralized Straumann library.

Go to www.Straumann.com/connectivity for the latest libraries.

**Using the Metal Scanbodies is not mandatory. It is optional. You may continue to use the Mono Scanbodies for all of your Authentic Straumann Restorative needs.