

»» Passion for
Precision ««

MPS
DT-Series

DENTIUM

SUPERLINE
IMPLANTIUM
IMPLANTIUM II

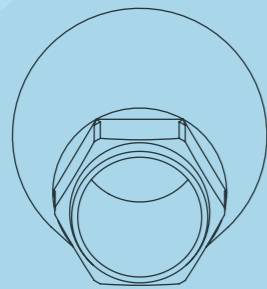
 **MEDENTIKA**[®]
A Straumann Group Brand

» Dentium «

DT-Series MEDENTiKA® expands its portfolio of compatible products with the implant system of Dentium.

MEDENTiKA® is wholeheartedly committed to continuous development based on the latest findings in challenging implantology. All products are developed with passion and produced with painstaking attention to detail. New products are an expression of our comprehensive expertise and take special account of the requirements of our customers and their patients.

Compatibility			
Dentium	SuperLine	compatibel with	DT-Series
	Implantium		DT-Series
	Implantium II		DT-Series



Implant connection:
D 3.6 mm – 7.0 mm

available
now

Portfolio Overview:

- Scanbody
- Titanium base ASC Flex
- PreFace
- Laboratory screw
- Laboratory implant

available
soon

- MedentiLOC
- Optiloc
- Novaloc
- Multi-unit

» MEDENTiKA® DT-Series «

Product Overview



Laboratory implant

- Titanium Grade 5 CF



Implant connection	D 3,6-7,0
Article No.	DT 50

Laboratory implant CAD/CAM

- Titanium Grade 5 CF



Implant connection	D 3,6-7,0
Article No.	DT 80

Please note: This is used for 3D printmodels.

Placement instrument laboratory implant CAD/CAM

- Stainless steel



Implant connection	D 3,6-7,0
Article No.	DT 80 T

Abutment screw

- Titanium Grade 5 CF



Placement instrument	Hex 1,26	Ball Torx
Article No.	DT 60	DT 61

Please note: The correct choice of the abutment screw is stated with the respective abutment in the catalogue.

Laboratory screw

- red coated



Article No.	DT 60 L	DT 61 L
-------------	---------	---------

Please note: The correct choice of the laboratory screw is stated with the respective abutment in the catalogue.

Scanbody

- Titanium
- specially coated
- incl. retention screw



Implant connection	D 3,6-7,0
Article No.	DT 1400-L
retention screw	DT 60 SB

Please note: The Scanbody is sterilisable and for intra-oral scanning.

Titanium base ASC Flex

- angled screw channel
- Titanium Grade 5 CF
- incl. abutment screw
- Type SF = Screw channel angled over the flat of the scanbody Type
- Recommended torque: 25 Ncm



Implant connection	D 3,6-7,0
Chimney height	3,5-6,5
Gingiva height	1,0 mm
Article No. Type 1/SF	DT 1600-1-SF
Abutment screw	DT 61

Please note: To screw in the titanium base ASC Flex you need the Placement instrument Ball-Torx M 03-8 or M 10-8. To select the desired direction of the angled screw channel, please consider the Instruction for use.

Modelling cap set

- burn-out plastic
- Scope of Delivery: four chimney heights



Modelling cap set straight	6-09-11
Modelling cap set angled	6-09-12

PreFace abutment

- Titanium Grade 5 CF
- incl. abutment screw
- Recommended torque: 25 Ncm



Implant connection	D 3,6-7,0
Diameter	11,5 mm
Article No.	DT 9000-R
Abutment screw	DT 60
Laboratory screw	DT 60 L

PreFace abutment

- CrCo alloy / CTE 14.1
- incl. abutment screw
- Recommended torque: 25 Ncm



Implant connection	D 3,6-7,0
Diameter	11,5 mm
Article No.	DT 9800-R
Abutment screw	DT 60
Laboratory screw	DT 60 L

TI-Forms-Abutment for M-Series

- Titanium Grade 5 CF
- incl. abutment screw
- Recommended torque: 25 Ncm

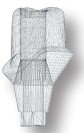


Implant connection	D 3,6-7,0
Diameter	11,5 mm
Abutment screw	DT 60
Laboratory screw	DT 60 L
Article No.	DT 9000-ST

Please note: This is used with Straumann/M-series.

MedentiCAD abutment

- Titanium Grade 5 CF
- incl. abutment screw
- Recommended torque: 25 Ncm

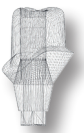


Implant connection	D 3,6-7,0
Article No.	DT 900001
Abutment screw	DT 60
Laboratory screw	DT 60 L

Please note: Custom made abutment.

MedentiCAD abutment

- CrCo alloy / CTE 14.1
- incl. abutment screw
- Recommended torque: 25 Ncm



Implant connection	D 3,6-7,0
Article No.	DT 900004
Abutment screw	DT 60
Laboratory screw	DT 60 L

Please note: Custom made abutment.

**Placement instrument
Ball Torx**

- Hardened stainless steel



Version	Contra-angle	Manual and ratchet
Article No.	M 03-8	M 10-8
Suitable for:	Novaloc abutment angled, titanium base ASC Flex	



Publisher: MEDENTiKA® GmbH
Hammweg 8-10
76549 Hügelsheim
Tel: +49 (0)7229 69912-10
info@medentika.de
www.medentika.com

Design: Der WeberFink GbR
graphic design studio
www.weberfink.de

Date: May 2020

We are certified:
DIN EN ISO 13485
Medical Device Directive 93/42/EEC
Annex II

CE0483

Technical changes and errors reserved.

You can find the Instructions for use and warranty conditions on the website www.medentika.com
More information on the warranty can also be requested directly from the manufacturer

MEDENTiKA® GmbH
Hammweg 8-10
76549 Hügelsheim
info@medentika.de
www.medentika.com

»» Passion
for **Precision** ««