



*A SMILE FOR
EVERYONE.
NEODENT® NEOARCH®
IMMEDIATE FIXED FULL-ARCH
SOLUTION.*



NEODENT®
A Straumann Group Brand

GM Grand Morse™
Connection

Helix™
Implant

acqua Acqua
Surface

A UNIQUE PURPOSE

Creating new smiles everyday.

Founded by a dentist for dentists, with the purpose of changing lives. Neodent® is the 2nd largest dental implant company in the world which offers outstanding product performance with a proven track record of clinical success. Neodent's solutions focus on progressive treatment concepts, such as immediacy, which enables the advancement of dentistry and affordability to create new smiles every day.



2nd largest dental implant company*

Available in over 40 countries.



25 years of history

More than two decades focused on enabling implant dentistry.



Clinical trust: 45K+ dentists

One of the largest networks of dental professionals.



Clinical success

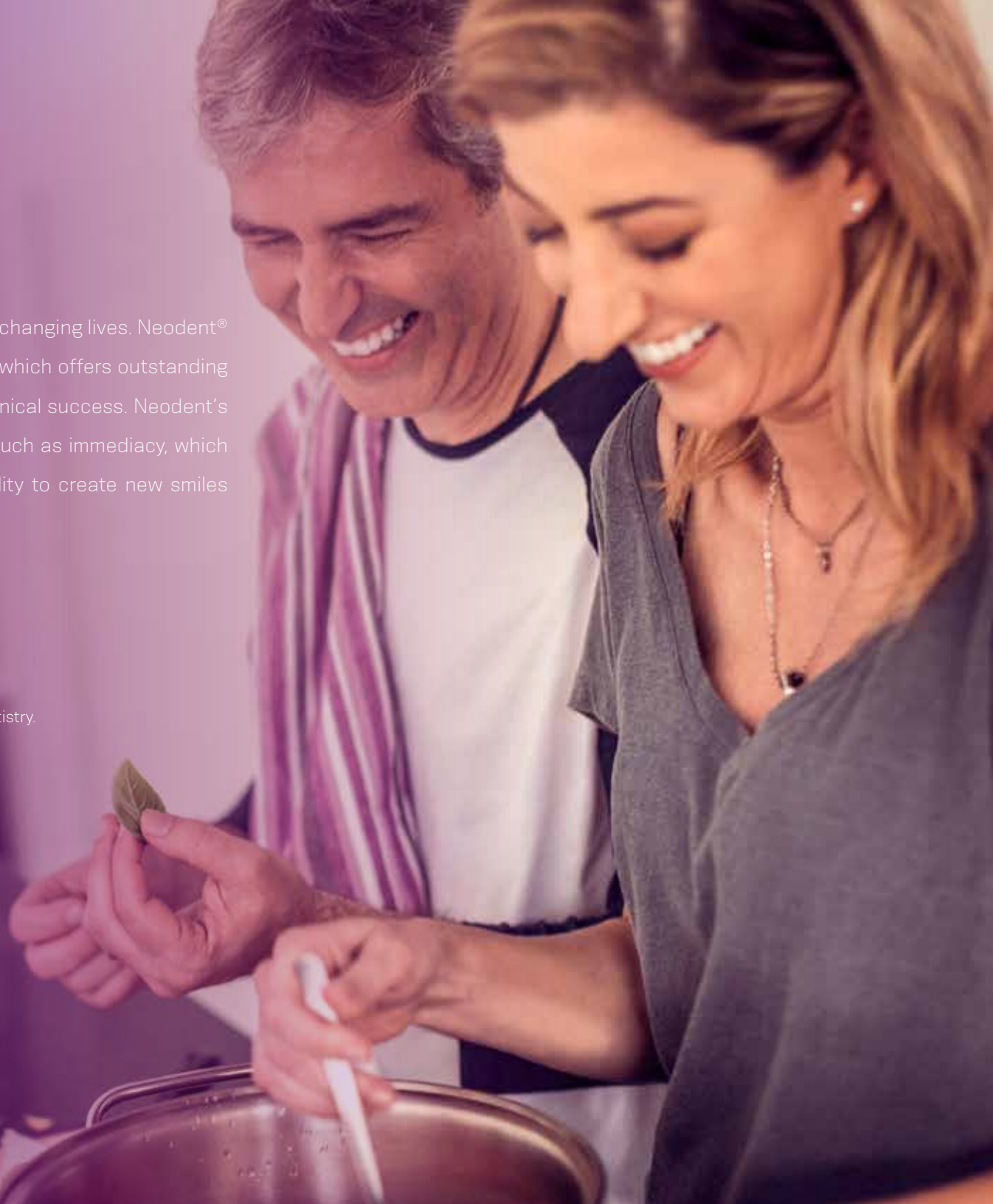
1.6M+ implants sold per year.*



Clinical proof

250+ studies

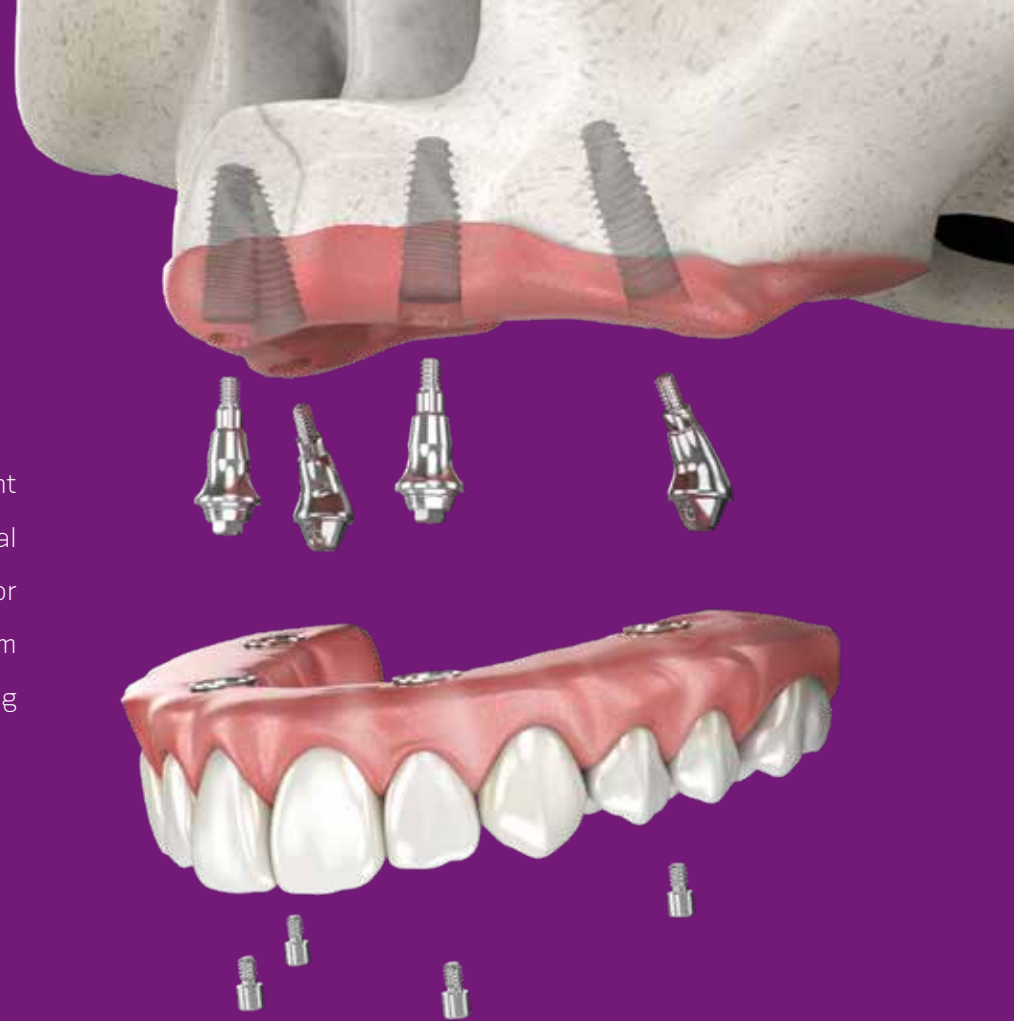
*data on file



A SMILE FOR EVERYONE

Neodent® NeoArch®.
Immediate fixed full-arch solution.

Increasing expectations for shortened treatment duration represents a significant challenge for dental professionals especially in patients with anatomical deficiencies. The Neodent® Implant System offers an optimized solution for immediate fixed treatment protocols in edentulous patients. This type of system allows for improved patient satisfaction and quality of life by immediately restoring function and esthetics according to survey results ⁽¹⁾.



Immediate function resulting in shorter treatment times.

- Tilted posterior implants minimizes the use of grafting procedures ⁽²⁾.
- Optimized implant design to achieve high primary stability in all bone types ⁽³⁾.
- The Neodent® hydrophilic surface, Acqua has been designed for immediate access of blood to the implant surface.



Immediate natural-looking esthetics with versatile restorative options.

- A broad range of options of gingival height to cater to your patient's needs.
- 6 options for the straight abutment and 3 options each for the 17° and 30° angled.



Immediate peace of mind thanks to a stable foundation.

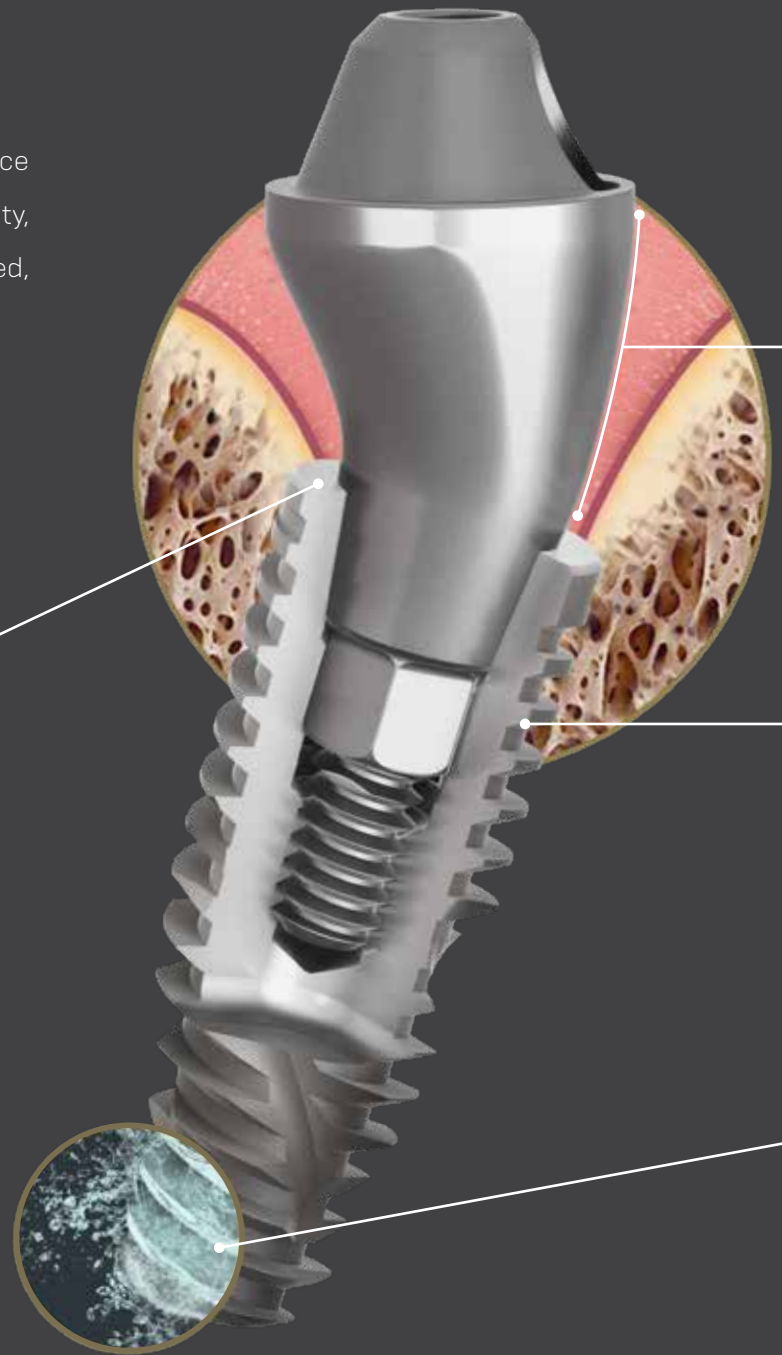
- One connection regardless of the diameters.
- Unique connection combining platform switching associated with a deep 16° Morse taper including an internal indexation.

THE NEXT LEVEL OF IMMEDIATE FIXED FULL-ARCH

The Neodent® NeoArch® Grand Morse™ combines Neodent's® technologies designed to enhance immediate full-arch rehabilitation. The Neodent® Grand Morse™ stability, the Helix™ versatility, the Acqua surface predictability, and optimized Mini Conical abutment shape all combined, maximize Neodent® NeoArch® efficiency: one implant, one connection, one abutment.

Grand Morse™ connection:
a stable and strong foundation designed for long term success.

- One prosthetic connection for all Grand Morse™ Implants: ease of use.
- 16° Morse Taper connection: designed for a tight fit for an optimal connection seal.
- Platform switching morse taper connection: fulfils the platform switching concept
- Deep Morse taper connection: designed for optimal load distribution.
- Internal Indexation: precise abutment positioning, protection against rotation and easy handling.



SURGICAL

Mini Conical Abutment: immediate natural-looking esthetics.

- Optimized emergence profile: reducing the need of bone profiling.
- Several gingival height options: adapting to tissue availability.
- Optimal angulation of 17° and 30°: fitting to patient anatomy.
- Short core, wide angle: maximizing passive fit and angulation compensation.

Grand Morse™ Helix™: unbeatable versatility.

- Fully tapered body design: allows for under prepping of the osteotomy.
- Hybrid contour: enabling stability with vertical placement flexibility.
- Dynamic progressive thread design: designed to achieve high primary stability in all bone types.
- Active apex: self-tapping.

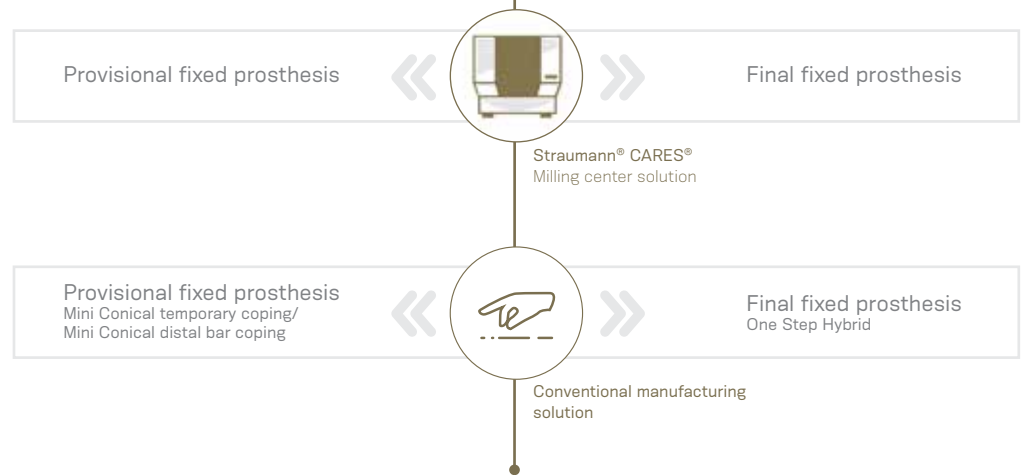
Acqua surface: high treatment predictability.

- Sand-blasted Large grit and Acid etched surface: Neoporos® highly successful surface.
- Hydrophilic surface: immediate greater surface accessibility ⁽⁴⁾.

PROSTHETIC

Comprehensive restorative solutions: designed to meet patient's expectations.

Meet patient stability and comfort expectations thanks to comprehensive customized milled frameworks for provisional or final restoration at the abutment level using a broad range of material and workflows.





IMMEDIATE SOLUTION IN SEVERE ATROPHIC MAXILLA

The Neodent® Helix GM™ Long and Zygoma GM™ complement the standard implant system for achieving immediate loading protocol in fixed full-arch restorations. They are specifically designed to bring surgical predictability to atrophic maxilla cases, as an alternative to grafting procedures.

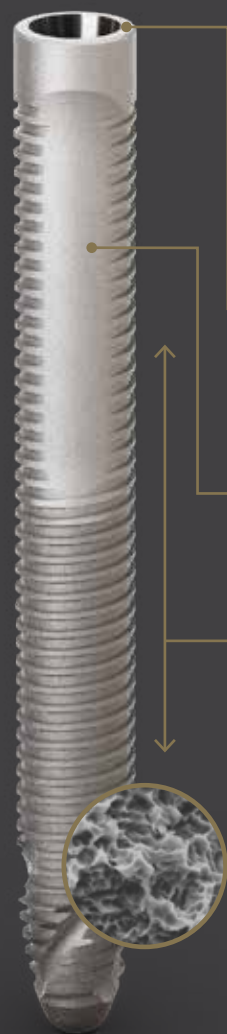
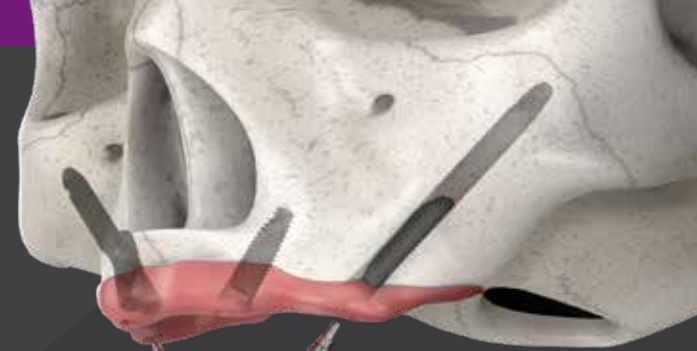
Helix GM™ Long *Solution for bicorticalization*

- 1. GRAND MORSE™ CONNECTION**
 - All benefits of the original 16° Morse taper GM connection designed to ensure a tight fit for an optimal connection seal.
 - One connection regardless of the diameter.
- 2. IMPLANT DESIGN**
 - Helix™ hybrid implant body to maximize treatment options and efficiency.
 - Dynamic progressive threads, designed to achieve high primary stability.
- 3. COMPREHENSIVE PORTFOLIO**
 - 3.75 and 4.0 mm diameters for more treatment versatility.
 - 20, 22.5 and 25 mm lengths designed to achieve bicorticalization.

NeoPoros

“The use of long implants may avoid more complex solutions, like bone grafting procedures, with a minimal invasive approach that can even represent a reduction in treatment time.”

DR. LUIS EDUARDO PADOVAN



Zygotoma GM™
Implant for zygomatic anchorage

1. GRAND MORSE™ CONNECTION

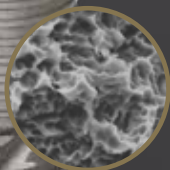
- All benefits of the original 16° Morse taper GM connection designed for a tight fit for an optimal connection seal.
- Straight head designed to bring flexibility to the implant positioning.

2. IMPLANT DESIGN

- Tissue protect portion without threads for the contact with the mucosa.
- Progressive increase of the thread depth at the apical area.

3. COMPREHENSIVE PORTFOLIO

- 4.0 mm of diameter.
- Ten different lengths: 30 / 35 / 37.5 / 40 / 42.5 / 45 / 47.5 / 50 / 52.5 / 55 mm.



NeoPoros

"The new design of the Zygotoma GM™ implant has been developed to increase surgical predictability and reduce complexity in Zygomatic surgeries."

DR. GENINHO THOMÉ

PROSTHETIC VERSATILITY

The Neodent® Grand Morse™ restorative portfolio offers optimal abutments angulations and a broad range of gingival heights is designed to attend different clinical needs. It allows to reach immediate function and esthetics, regardless of the maxilla atrophy level.

MINI CONICAL ABUTMENT:

Several gingival heights and angulations combined with an anatomical shape, short cone and wide angle, resulting in an optimized emergence profile.



	0°	17°	30°	45°*
GINGIVAL HEIGHTS	0.8 / 1.5 / 2.5 / 3.5 / 4.5 / 5.5 mm	1.5 / 2.5 / 3.5 mm	1.5 / 2.5 / 3.5 mm	1.5 / 2.5 mm

*The 45° Mini Conical Abutment is indicated for use only with Helix GM™ Long and Zygoma GM™.

DIGITAL SOLUTION

Comprehensive restorative solutions: designed to meet all patient expectations.

Provisional fixed prosthesis

Provisional fixed prosthesis

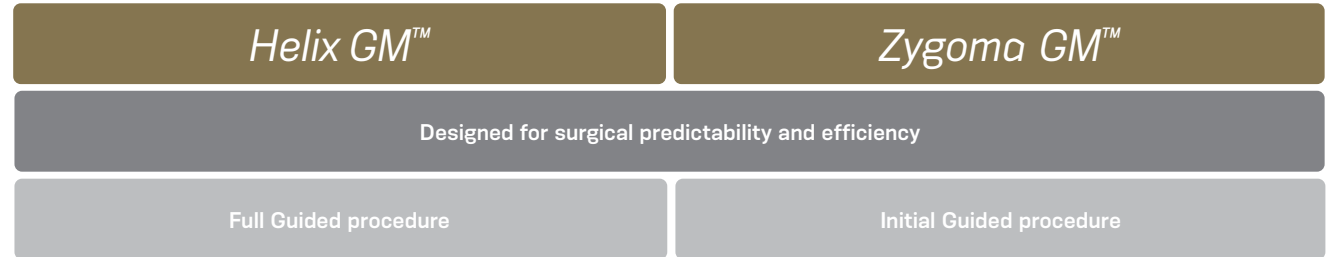
Provisional fixed prosthesis
Mini Conical temporary coping/
Mini Conical distal bar coping



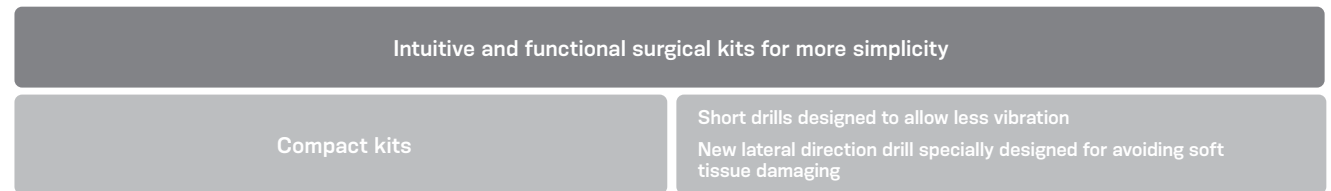
SIMPLICITY & PREDICTABILITY

Neodent® provides a complete range of products designed to bring simplicity to the dental practice and predictability during the surgeries.

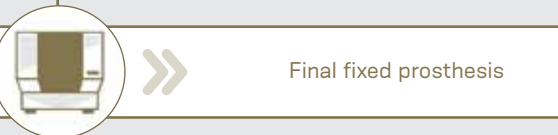
GUIDED SURGERY



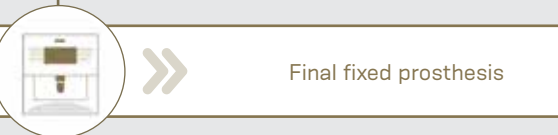
SURGICAL KIT CASES



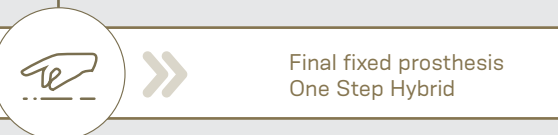
Meet patient stability and comfort expectations thanks to comprehensive customized milled frameworks for provisional or final restoration at the abutment level using a broad range of material and any workflows.



Straumann® CARES®/Centralized Production
Milling center solution



Straumann® M series/Zirkonzahn M4
In-house milling solution



Conventional manufacturing solution



PATIENT MEDICAL HISTORY

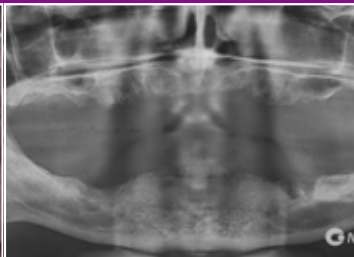
Patient aged 47, with no systemic alteration and non-smoker.
History of tooth loss due to caries and tartar buildup.

PLANNING

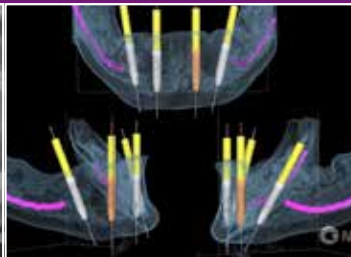
- Full lower arch
- Immediate loading protocol



1. Image, before teeth extraction.



2. 3-4 months after teeth extractions and immediate denture.



3. Tomography analysis and implant planning.



4. Angle measurer of 30° after drill 2.0 checking the final abutment positioning.



5. Preview of the final implants positioning with multifunctional guide.



6. Posterior tilted implant placement.



7. Checking final 30° angled implant positioning according to the antagonist arch.



8. Splinting open tray impression copings over mini conical abutment with multifunctional guide.



9. Final panoramic image with the bar positioned on Neodent® abutments.



10. Clinical view of the prosthesis rehabilitation.

Clinical case performed by Dr. Geninho Thomé.

DESCRIPTION OF THE PROCEDURE

Total extraction of the lower teeth. Four implants placed in the mandible, with a 60 N.cm torque. Two Helix GM™ Acqua 3.75 x 16 mm placed on positions 35 and 45 and two Helix GM™ Acqua 3.5 x 16 mm on positions 32 and 42. A total prosthesis was fabricated and 70 days after extractions, the x-ray and computed tomography were realized.

DESCRIPTION OF THE RESULTS

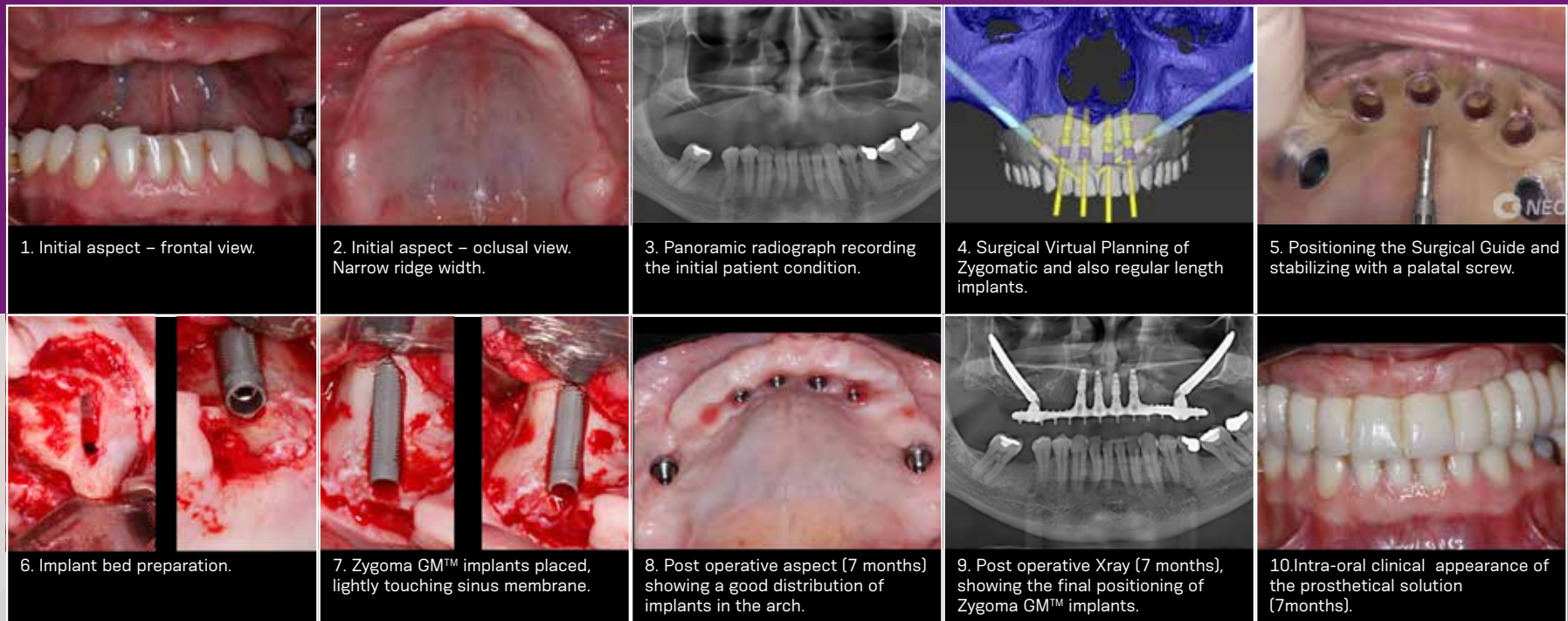
The GM surgical kit facilitates the instrumentation on bones with high density. Helix GM™ implants were placed with high stability. In this specific case, bone type II allowing the immediate loading and patient rehabilitation.

PATIENT MEDICAL HISTORY

Patient aged 47, with no systemic alteration and non-smoker.
History of tooth loss due to caries and tartar buildup.

PLANNING

- Full upper arch
- Immediate loading protocol
- Guided Surgery protocol



Clinical case performed by Dr. Geninho Thomé based on the ethics committee project approval under N° 2.960.049 on October 10th, 2018.

DESCRIPTION OF THE PROCEDURE

Local anesthesia with intravenous sedation. Placement of the surgical guide on the maxilla, drilling sequence followed according to each implant specification. Placement of 2 Zygoma GM™ implants 4.0x42.5 mm with a torque greater than 60 N.cm in the zygomatic bone area and placement of 4 Helix GM™ Acqua 3.5x8 mm with a 60 N.cm torque in the maxillary anterior region. Zygomatic region filled with Botiss biomaterial.

DESCRIPTION OF THE RESULTS

The Helix GM™ and Zygoma GM™ surgical kits facilitate the instrumentation on bones with high density. All implants placed with high stability allowing the immediate loading and patient rehabilitation. The patient presented satisfactory results (1-year follow up).

REFERENCES AND PUBLICATIONS

- [1] Babbush CA. Post treatment quantification of patient experiences with full-arch implant treatment using a modification of the OHIP-14 questionnaire. J Oral Implantol. 2012 Jun;38(3):251-60.
- [2] Block MS, Haggerty CJ, Fisher GR. Nongrafting implant options for restoration of the edentulous maxilla. J Oral Maxillofac Surg 2009;67:872-881.
- [3] Steigenga J, Al-Shammari K, Misch C, Nociti FH Jr, Wang HL. Effects of implant thread geometry on percentage of osseointegration and resistance to reverse torque in the tibia of rabbits. J Periodontol. 2004;75(9):1233-41.
- [4] Sartoretto SC, Alves ATNN, Zarranz L, Jorge MZ, Granjeiro JM, Calasans-Maia MD. Hydrophilic surface of Ti6Al4V-ELI alloy improves the early bone apposition of sheep tibia. Clin Oral Implants Res. 2017;28(8):893901.

© Neodent® 2019. All rights reserved.
Neodent® and/or other trademarks and logos from Neodent® that are mentioned herein are the trademarks or registered trademarks of Straumann Holding AG and/or its affiliates. All rights reserved.

ifu.neodent.com.br/en
www.neodent.us • www.neodent.ca



Straumann North American Headquarters
Straumann USA, LLC
60 Minuteman Road
Andover, MA 01810
Phone 800/448 8168 (US) • 800/363 4024 (CA)
Fax 978/747 2490
www.straumann.us • www.straumann.ca

NAMLIT.2038 1/22 V3 PMR

