



A Smile for  
Everyone  
solution



NeoArch®  
Solution



Helix®  
Implant

# NEODENT® NEOARCH®

IMMEDIATE FULL ARCH SOLUTION.





# A Smile for Everyone.

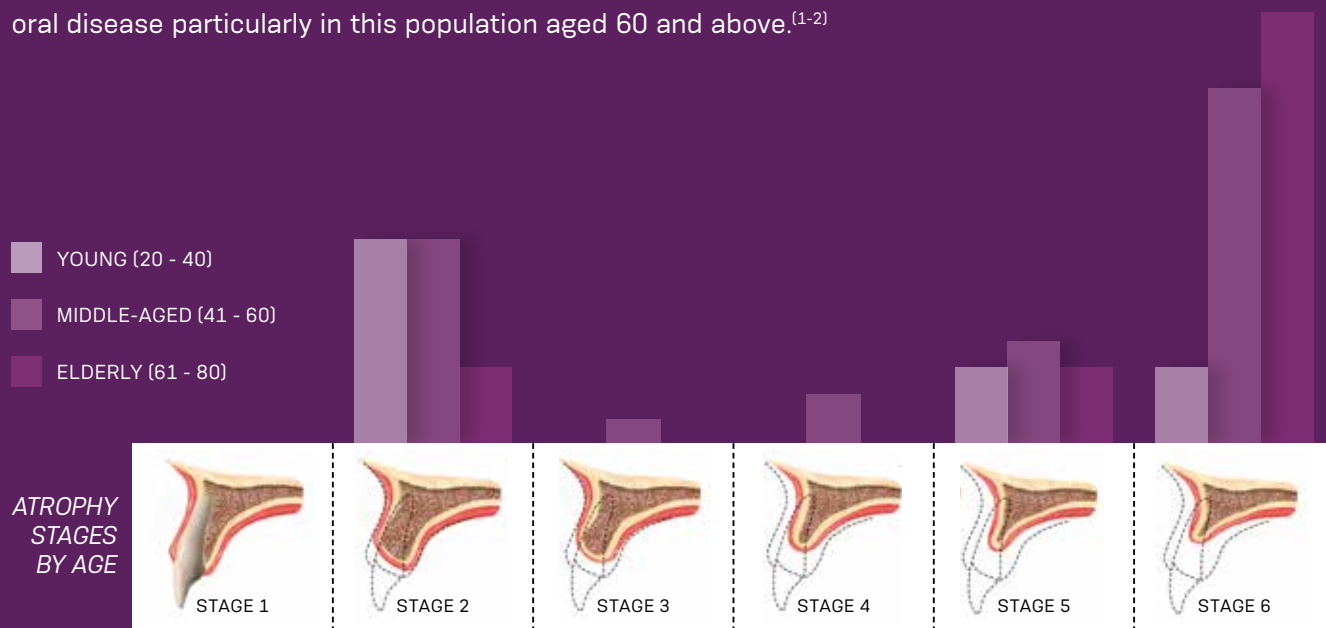
Neodent® goes beyond conventional implant dentistry to offer solutions for immediate\* treatments in a wide range of clinical challenges. From solutions for limited surgical and prosthetic spaces to full arch rehabilitations, The **"A Smile For Everyone"** portfolio aims to increase efficiency and peace of mind, while improving patient satisfaction and quality of life, by immediately restoring function with natural-looking esthetics.

\*For immediate load application, the primary stability must be at least 35 N.cm and the patient must present with physiological occlusion.



# High levels of atrophic maxilla are mainly affecting a growing population

Globally, poor oral health among elderly people represents high levels of tooth loss. Following this, the severely atrophic maxilla is a very common oral disease particularly in this population aged 60 and above.<sup>[1-2]</sup>



1990  
0.5 BILLIONS



2050  
MORE THAN  
2 BILLIONS



INCREASE OF  
MORE THAN **4X**

A phenomenon known as **population ageing** is occurring throughout the world. The elderly population is growing at a rate of about 3 percent per year and is projected to be 2.1 billion by 2050.<sup>[3]</sup>

# NEODENT® NEOARCH®

## IMMEDIATE FULL ARCH SOLUTION

Increasing expectations for shortened treatment duration represents a significant challenge for dental professionals, especially in patients with anatomical deficiencies. Neodent® NeoArch® offers an optimized solution for immediate treatment protocols in edentulous patients, offering state-of-the-art resources for digital and conventional workflows.

### ● COMPREHENSIVE WORKFLOWS FOR IMMEDIATE RESULTS

1

#### COMMITTED TO THE EDENTULOUS PATIENT JOURNEY



Find the ideal workflow for your edentulous patient.

2

#### ANATOMICALLY DRIVEN SOLUTION



Designed for predictable immediate treatment in different densities and atrophy levels of the residual alveolar bone.

3

#### IMMEDIATE NATURAL-LOOKING ESTHETICS



Several gingival heights and angulations combined with an anatomical shape, short cone and wide angle, aimed at optimizing the emergence profile.

#### REMOVABLE OPTIONS FOR STABLE SMILES

Designed to maximize flexibility and reliability in removable solutions.



**Warning:**  
The coping for removable prosthesis used along with Zygomatic implants are not recommended for immediate loading.



### IMMEDIATE FUNCTION MAY RESULT IN SHORTER TREATMENT TIMES.

- Different implant techniques to avoid the use of grafting procedure.<sup>[5]</sup>
- A comprehensive portfolio, including Helix® GM, Helix® GM Long, Zygoma GM and GM Zygoma-S to accommodate all bone types.



### IMMEDIATE NATURAL-LOOKING ESTHETICS WITH VERSATILE RESTORATIVE OPTIONS.

- A broad gingival height abutment range to meet patient's needs.
- Options of straight and angled abutments (17°, 30°, 45° Slim\*, 45°\*, 52°\* and 60°\*).



### IMMEDIATE PEACE OF MIND THANKS TO A STABLE FOUNDATION.

- One connection regardless of the diameters.
- Familiar connection combining platform switching associated with a deep 16° Morse taper including an internal indexation.



### DIGITAL OR CONVENTIONAL WORKFLOW

- The first step for immediacy, simple as it should be with NeoConvert™: an optimized technique for denture conversions.
- Straumann® UNIQ™: a premium service to outsource the planning, design and manufacturing of your custom implant prosthetics.

4

#### IMMEDIATE TEMPORARY PROSTHESIS WITH NEOCONVERT™



Save time and costs in your treatments by converting a temporary denture into a fixed solution.

5

#### DIGITAL OPTIONS TO STREAMLINE YOUR CLINICAL PRACTICE



Leverage Straumann® Digital Solutions tailored specifically for full arch treatments.

6

#### COMPREHENSIVE RESTORATIVE SOLUTIONS



Different possibilities of workflows and materials: customize frameworks for provisional or final restorations.

\*The 45° Mini Conical Abutment, 45° Mini Conical Abutment Slim, the 52° Mini Conical Abutment and 60° Mini Conical Abutment are indicated for use only with Zygoma GM and Zygoma-S.



# THE NEXT LEVEL OF IMMEDIATE FIXED FULL ARCH

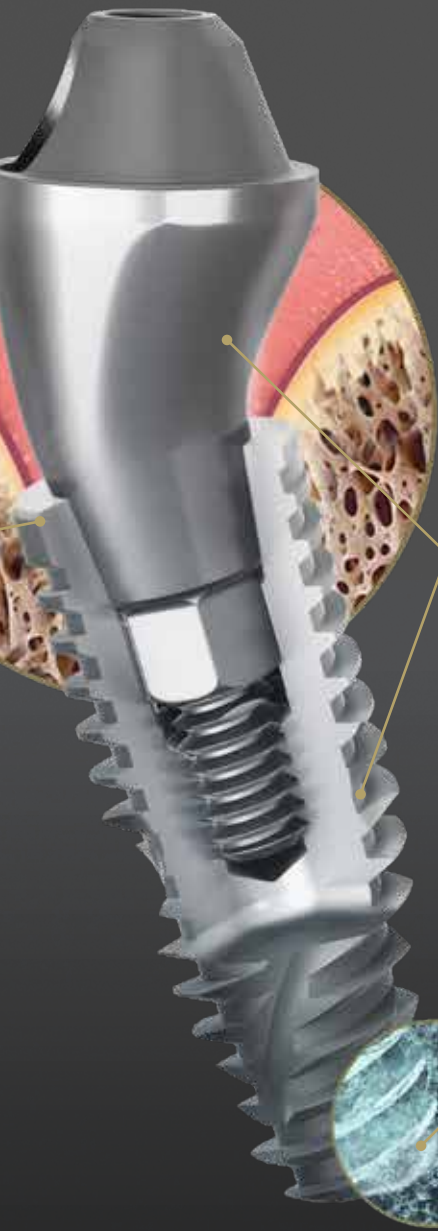
The NeoArch® Grand Morse® combines Neodent's technologies designed to enhance immediate full arch rehabilitation. The Grand Morse™ stability, the Helix® versatility, the ACQUA surface predictability, and optimized Mini Conical abutment shape all combined, maximize NeoArch® efficiency: one implant, one connection, and one abutment.

## **GRAND MORSE® CONNECTION:** A STABLE AND STRONG FOUNDATION DESIGNED FOR LONG TERM SUCCESS.

- **One Prosthetic Platform:** All Neodent® Grand Morse® implants feature the Grand Morse® connection regardless of the implant diameter.
- **Abutment design** with a narrower diameter than the implant coronal area, enabling the platform switching concept.
- **16° Morse Taper Connection:** Designed to ensure tight fit for an optimal connection sealing.
- **Internal Indexation:** Precise abutment positioning, protection against rotation and easy handling.
- **Deep Connection:** Allowing a large contact area between the abutment and the implant designed for an optimal load distribution.



# Helix® GM



## HELIX® GRAND MORSE®: UNBEATABLE VERSATILITY.

- **Fully tapered body design:** allows for under prepping of the osteotomy.
- **Hybrid contour:** for stability with vertical placement flexibility.
- **Dynamic progressive thread design:** designed to achieve high primary stability in all bone types.
- **Active apex:** self-tapping.

## MINI CONICAL ABUTMENT: IMMEDIATE NATURAL-LOOKING ESTHETICS.

- **Optimized emergence profile:** reducing the need of bone profiling.
- **Several gingival height options:** adapting to tissue availability.
- **Optimal angulation of 17°, and 30°:** fitting to patient anatomy.
- **Short cone, wide angle:** maximizing passive fit and angulation compensation.

## ACQUA SURFACE: HIGH TREATMENT PREDICTABILITY.

- Sand-blasted large grit and acid etched surface: NeoPoros™ highly successful surface.
- **Hydrophilic surface:** immediate greater surface accessibility\*<sup>(7)</sup>

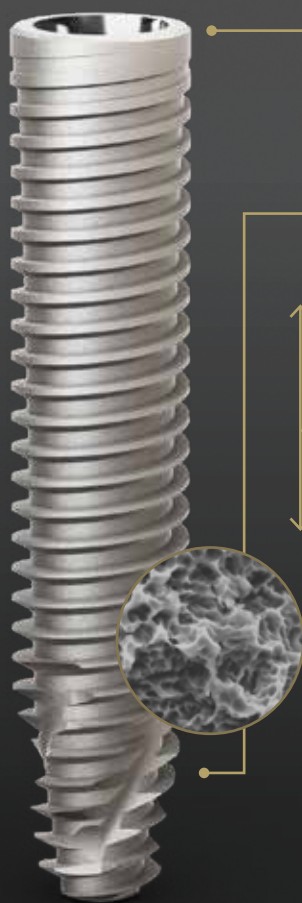
\*Based on results of a pre-clinical study in animals; the pre-clinical testing is not correlated to long-term clinical outcomes in humans.



# IMMEDIATE SOLUTION IN SEVERE ATROPHIC MAXILLA

The Neodent® Helix® GM Long, Zygoma GM and GM Zygoma-S complement the standard implant system for achieving immediate loading protocol in fixed full-arch restorations. They are specifically designed to bring surgical predictability to atrophic maxilla cases, as an alternative to grafting procedures.

## Helix® GM Long Solution for bicorticalization



### GRAND MORSE® CONNECTION

- All benefits of the original 16° Morse taper
- GM connection designed to ensure a tight fit for an optimal connection seal.
- One connection regardless of the diameter.

### IMPLANT DESIGN

- Helix™ hybrid implant body to maximize treatment options and efficiency.
- Dynamic progressive threads, designed to achieve high primary stability.

### COMPREHENSIVE PORTFOLIO

- 3.75 and 4.0 mm diameters for more treatment versatility.
- 20, 22.5 and 25 mm lengths designed to achieve bicorticalization.

**NeoPorous**

**"The use of long implants may avoid more complex solutions, like bone grafting procedures, with a minimal invasive approach that can even represent a reduction in treatment time."**

**DR. LUIS EDUARDO PADOVAN**





## Zygoma GM Implant for zygomatic anchorage

### GRAND MORSE® CONNECTION

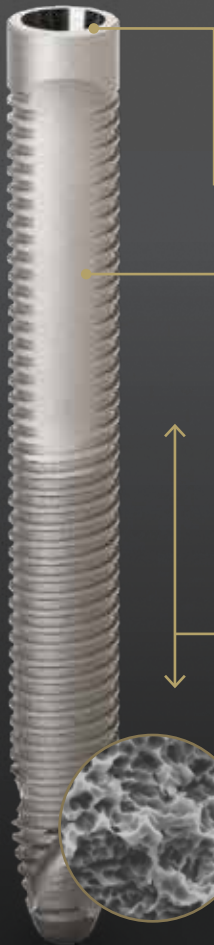
- All benefits of the original 16° Morse taper
- GM connection designed to ensure a tight fit for an optimal connection seal.
- Straight head designed to bring flexibility to the implant positioning.

### IMPLANT DESIGN

- Tissue protect portion without threads for a friendly contact with the mucosa.
- Progressive increase of the thread depth at the apical area.

### COMPREHENSIVE PORTFOLIO

- 4.0 mm of diameter.
- Ten different lengths: 30 / 35 / 37.5 / 40 / 42.5 / 45 / 47.5 / 50 / 52.5 / 55 mm.



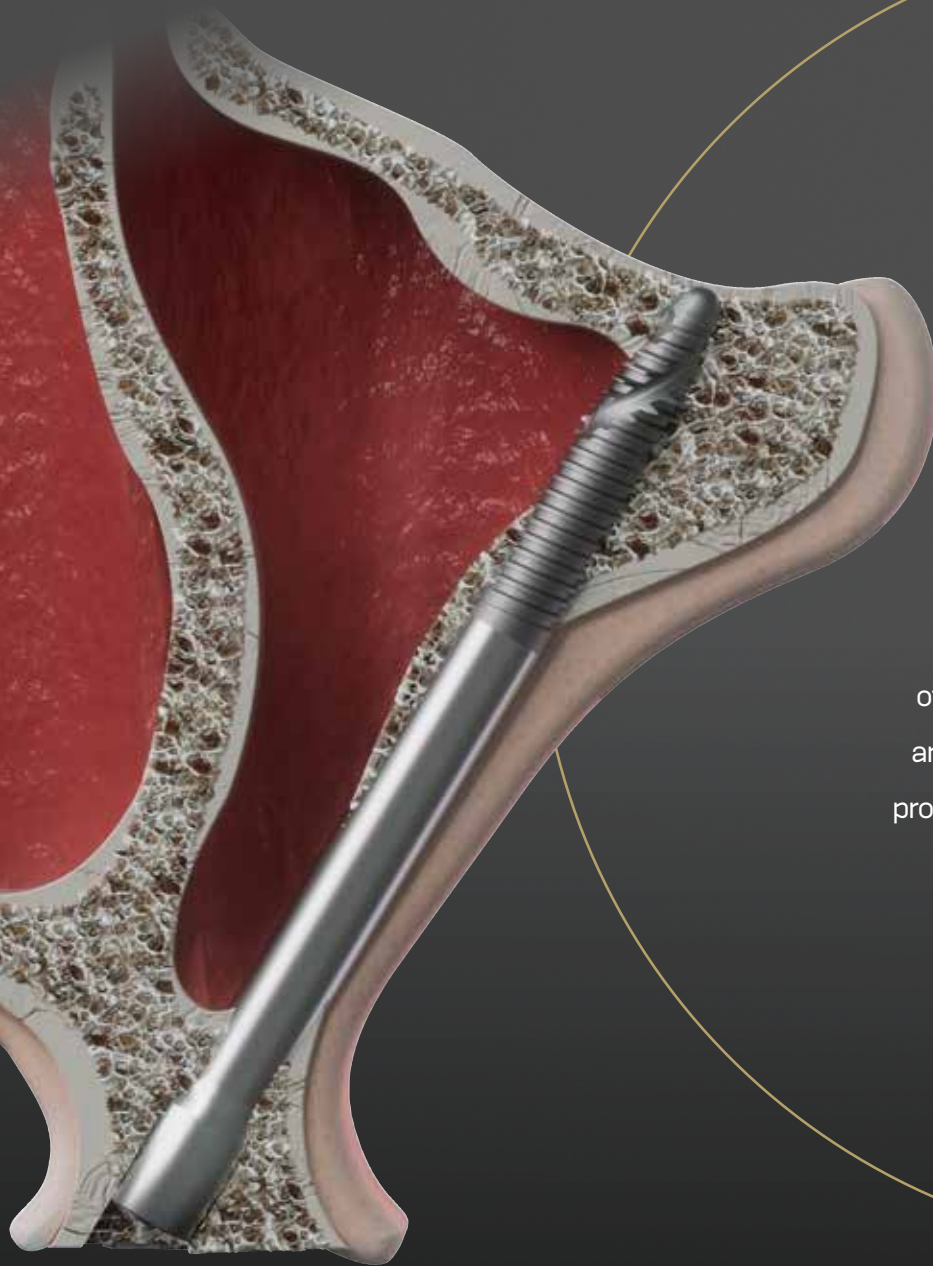
**NeoPoros**

"The new design of the ZygomaGM™ implant has been developed to increase surgical predictability and reduce complexity in Zygomatic surgeries."

DR. GENINHO THOMÉ

# GM Zygoma-S

Greatness in severe atrophic maxilla cases



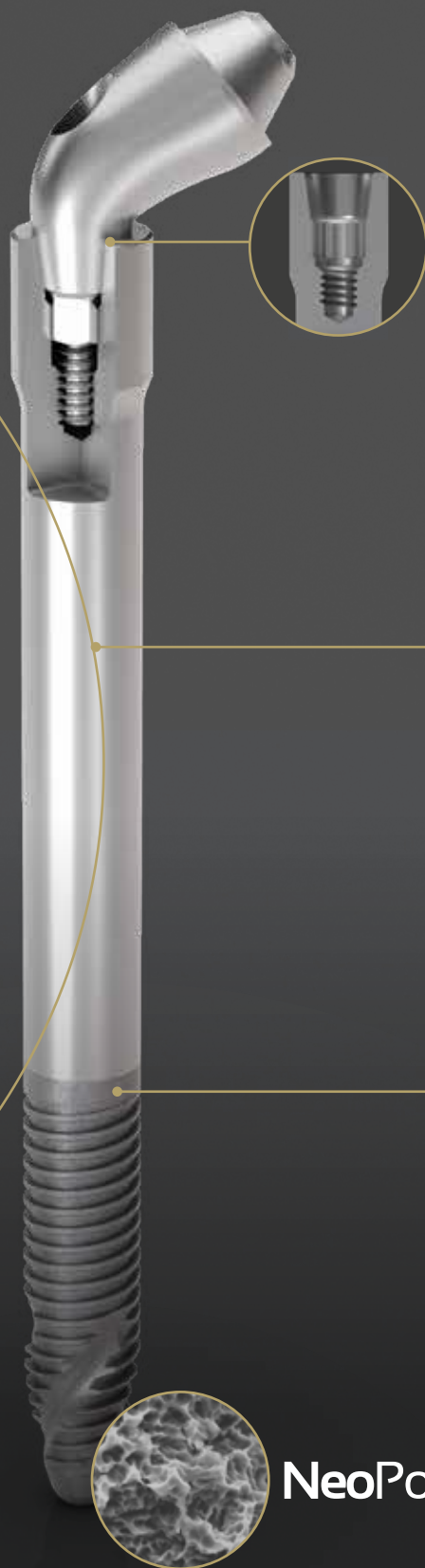
Designed for meeting edentulous patients' expectations of shorter treatment times and immediate aesthetic and functional improvements. Atrophic maxillas present significant challenges for clinicians, especially in patients with anatomical deficiencies.

Neodent® GM Zygoma-S Implant System is part of the NeoArch® Grand Morse® solution, and offers an optimized solution for immediate fixed treatment protocols in edentulous patients with severe atrophic maxilla, aimed at improving patient satisfaction.<sup>[9]</sup>

The polished surface of Zygoma-S implant is a game-changer. I know a lot of patients will benefit from the extra-sinus technique with an improved soft tissue approach of this new implant.

DR. RIAD ALMASRI





**GRAND MORSE® CONNECTION:  
A STABLE AND STRONG FOUNDATION  
DESIGNED FOR LONG TERM SUCCESS.**

- One prosthetic connection for all Grand Morse® Implants: ease of use.
- 16° Morse Taper connection: designed to ensure a tight fit for an optimal connection seal.
- Platform switching morse taper connection: fulfills the platform switching concept.
- Deep Morse taper connection: designed for optimal load distribution.
- Internal Indexation: precise abutment positioning, protection against rotation and easy handling.

**IMPLANT DESIGNED TO PROVIDE VERSATILE  
POSSIBILITIES OF PLACEMENT<sup>[10]</sup>, RESULTING  
IN ANATOMICAL EFFICIENCY**

- Implant designed for an extrasinus path.
- Associated with regular implants or Quad Z placement.
- 3.5 mm and 3.75 mm of diameter.
- Smooth Machined Surface in the implant body aimed at maintaining soft-tissue preservation<sup>[6]</sup>.
- Coronal portion with 4.3 mm of diameter designed to ensure resistance and a tight fit for an optimal connection seal.
- Ten different lengths: 30 / 35 / 37.5 / 40 / 42.5 / 45 / 47.5 / 50 / 52.5 / 55 mm.

**HELIX® GRAND MORSE®: UNBEATABLE VERSATILITY.**

- Progressive depth threads at the apical area allow under-prepping of the osteotomy.
- Apex with NeoPoros surface, potentializing the osseointegration to enhance the zygomatic anchorage.
- **Hybrid contour:** enable stability with vertical placement flexibility.
- Dynamic progressive thread design designed to achieve high primary stability in all bone types.
- Active apex: self-tapping.

**NeoPoros**

# PROSTHETIC VERSATILITY

The Neodent® NeoArch® restorative portfolio meets those needs by providing versatile options and respecting biological distances, offering optimal abutment angulations and a broad range of gingival heights to address different clinical needs. In addition, achieving immediate function with prosthetics simplifies your workflow, optimizing the emergence profile, regardless of the maxilla atrophy level.



*"The wide range of angles for Mini Conical Abutments and the special GM design deliver great results for the patient's needs, with favorable and functional prosthesis."*

DR. GENINHO THOMÉ

## Mini Conical Abutment

Several gingival heights and angulations combined with an anatomical shape, short cone and wide angle, optimizing the emergence profile.



\*The 45°/45° Slim/45°/52°/60° Mini Conical Abutment is indicated for use only with Zygoma GM and GM Zygoma-S.



# COMPREHENSIVE RESTORATIVE SOLUTIONS

Different possibilities of workflows and materials: customize frameworks for provisional or final restorations.

## Centralized Production Center

Provisional fixed prosthesis



Final fixed prosthesis



\*Check availability in your region

## Conventional Manufacturing Solutions

NeoConvert™  
Provisional fixed prosthesis  
Mini Conical temporary coping  
Mini Conical distal bar coping



Final fixed prosthesis  
One Step Hybrid



## SCALE UP WITH STRAUMANN® UN!Q™

### AN OUTSOURCED DESIGN AND PRODUCTION SERVICE FOR CUSTOM PROSTHETICS.

In a time of digital transformation, when resources are scarce and competition is fierce, the Straumann UN!Q™ prosthetic portfolio addresses patients' esthetic expectations with the flexibility to fit their budget.

SCAN TO  
LEARN MORE



#### Scalable:

grow your business without further investment in CAD resources or CAM equipment.



#### Reliable:

70-year legacy of Swiss precision engineered prosthetics, to your specifications, consistently delivered.



#### Comprehensive:

extensive portfolio and wide compatibility with over 50 implant platforms and design options.



#### Flexible:

pick and choose the on-demand workflow that is tailored to your needs.

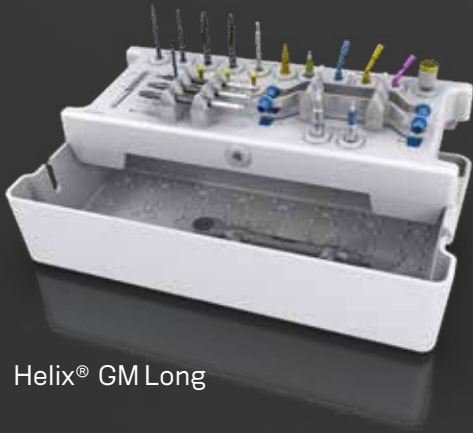
# SURGICAL SIMPLICITY & PREDICTABILITY

Neodent® provides a complete range of products designed to bring simplicity to the dental practice and predictability during the surgeries.

	Helix® GM	Helix® GM Long	Zygoma GM	GM Zygoma-S
GUIDED SURGERY	Designed for surgical predictability and efficiency			
	Full Guided procedure		Initial Guided procedure	
SURGICAL KIT CASES	Intuitive and functional surgical kits for more simplicity			
	Compact kits		Short drills designed to allow less vibration New lateral direction drill specially designed to minimize soft tissue damaging	



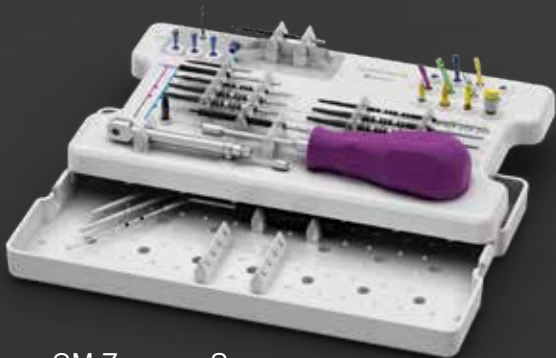
Helix® GM



Helix® GM Long



Zygoma GM



GM Zygoma-S



# A REMOVABLE OPTION FOR STABLE SMILES.

Implant-retained dental prosthesis may be considered as a choice for edentulous rehabilitation as it helps improve oral function and quality of life when compared to conventional dentures.<sup>[13-16]</sup>

Since edentulism primarily affects the aging and economically disadvantaged population<sup>[17-20]</sup>, implant supported overdentures may be an affordable treatment option.

The Neodent® GM Attachment TiN\* solution for removable prosthesis is designed to maximize flexibility and reliability.

- FLEXIBILITY ON ORIGINAL CONNECTION
  - RETENTION RELIABILITY MADE SIMPLE
  - 0°, 15° AND 30° OPTIONS FOR VARIABLE ANGLED COMPATIBILITY.
- For the GM connection, straight, 15° and 30° angled solutions allow restoring up to 30° of abutment divergence\*\*.
  - For Narrow GM and Helix® Short, only straight abutments are available, but will allow up to 40° of abutment divergence\*\*



## A REMOVABLE SOLUTION OPTION ON MULTI-UNIT ABUTMENTS

Transform your Mini Conical Abutments into a removable solution with the Coping for Removable Prosthesis.

### Warning:

The coping for removable prosthesis used along with Zygomatic implants are not recommended for immediate loading.

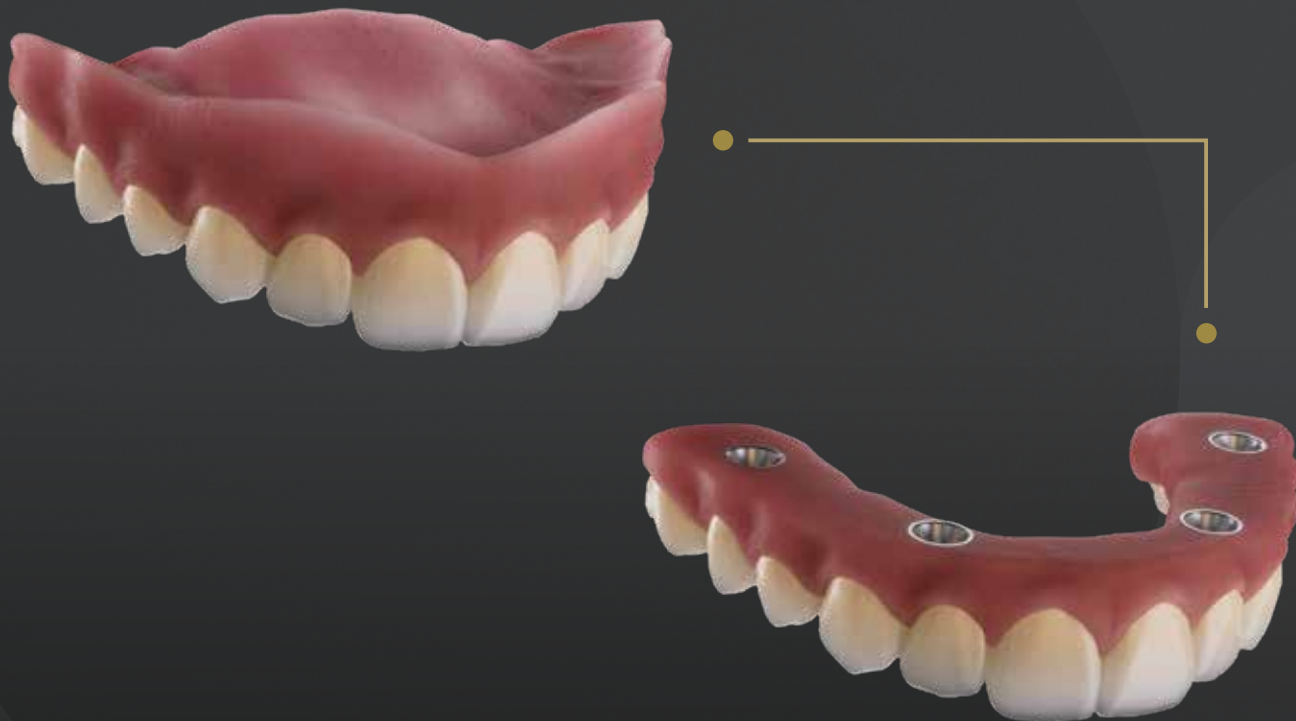


\*TiN - Titanium Nitride

\*\*Divergence when using Novaloc and extended range liners.



## THE NEODENT® TECHNIQUE FOR IMPROVING THE CONVERSION FROM REMOVABLE TO FIXED DENTURES.



The challenges in this journey are directly related to decreasing the time for fixed teeth, and improving comfort during the procedures while keeping treatment affordability. All these aspects are crucial for decision-making, and the technique of choice has a relevant impact on the journey.

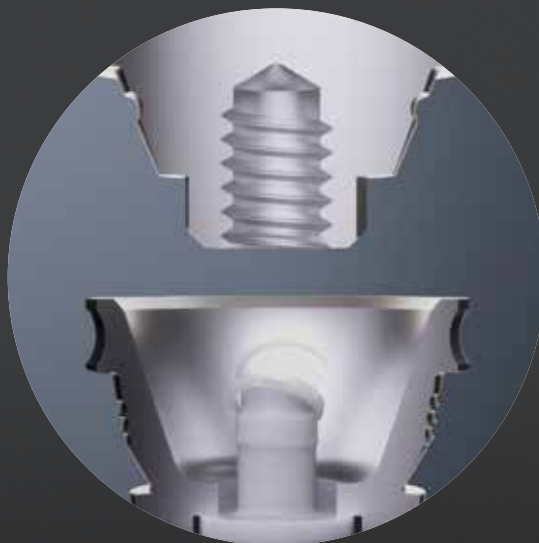
NeoConvert™ delivers a different way to transform smiles: a first step to full arch immediacy developed to enable temporary treatment with lower chair time and greater predictability with a straightforward workflow, whether performed chairside or in the lab.





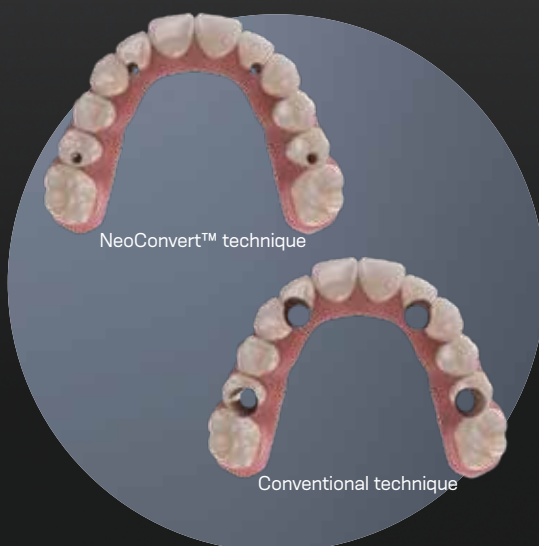
**THE FIRST STEP FOR  
IMMEDIACY: SIMPLE AS IT  
SHOULD BE**

NeoConvert™ is an enhanced technique to convert removable to fixed dentures: the simplicity in every step for immediacy.



**IMMEDIATE FULL ARCH  
TREATMENT:  
ONE STEP CLOSER TO  
CONVERSION**

NeoConvert™ values your chair time with efficiency: full conversion technique in your hands with a straightforward workflow.



# CLINICAL CASES



## DR. GENINHO THOMÉ

- Founder & Former Scientific President of Neodent.
- Master's & PhD in Implantology and is a certified specialist in both Implantology & Periodontology.
- Professor & General Director of the Latin American Institute of Dental Research & Education (ILAPEO) in Curitiba, Brazil

### NEOARCH® FULL UPPER ARCH GUIDED SURGERY REHABILITATION WITH IMMEDIATE LOADING USING ZYGOMA GM AND HELIX GM ACQUA IMPLANTS. ZYGOMATIC REGION FILLED WITH BOTISS BIOMATERIAL.



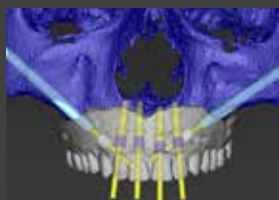
1. Initial aspect – frontal view.



2. Initial aspect – occlusal view. Narrow ridge width.



3. Panoramic radiograph recording the initial patient condition.



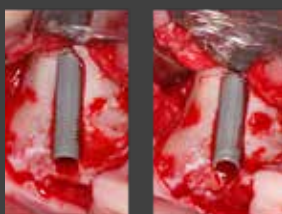
4. Surgical Virtual Planning of Zygomatic and also regular length implants.



5. Positioning the Surgical Guide and stabilizing with a palatal screw.



6. Implant bed preparation.



7. Zygoma GMTM implants placed, lightly touching sinus membrane.



8. Post operative aspect (7 months) showing a good distribution of implants in the arch.



9. Post operative Xray (7 months), showing the final positioning of Zygoma GMTM implants.



10. Intra-oral clinical appearance of the prosthetical solution (7 months).

Clinical case performed by Dr. Geninho Thomé based on the ethics committee project approval under No 2.960.049 on October 10th, 2018



## DR. RIAD ALMASRI

- Prosthodontic Specialist - Nova Southeastern University
- NSU College of Dental Medicine Adjunct Faculty
- 1on1 Implantology™ CEO/Founder

### ATROPHIC MAXILLA REHABILITATION WITH IMMEDIATE LOADING USING GM ZYGOMA-S IMPLANTS ASSOCIATED WITH HELIX® GM.



Initial panoramic radiographic of the patient.



Clinical aspect after installing two GM Zygoma S and 3 Helix® GM. Occlusal view.



Final radiographic aspect, post-surgical.



Post-surgical clinical aspect with prosthesis installed, vestibular view, seven days follow-up.



# Smile through life.



A Straumann Group Brand

Neodent® is a global brand founded by a dentist for dentists, with the purpose of changing lives. Available in 95 countries, with a legacy of more than 30 years focused on ease of use, Neodent® Dental Implant Systems focus on progressive treatment concepts, such as immediacy with modern and reliable solutions to enable therapy access and affordability for creating new smiles every day.



## GLOBAL BRAND

Available in 95 countries, expanding our philosophy worldwide.



## FOUNDED BY A DENTIST FOR DENTISTS

A legacy of more than 30 years focused on ease of use.



## PROGRESSIVE TREATMENT CONCEPTS

Modern and reliable solutions.



## THERAPY ACCESS AND AFFORDABILITY

Accessability to proven and affordable solutions.



- (1). Petersen, P. E., Kandelman, D., Arpin, S., & Ogawa, H. (2010). Global oral health of older people-call for public health action. *Community dental health*, 27(4), 257-67.
- (2). Reich, K. M., Huber, C. D., Lippnig, W. R., Ulm, C., Watzek, G., & Tangl, S. (2011). Atrophy of the residual alveolar ridge following tooth loss in an historical population. *Oral diseases*, 17(1), 33-44.
- (3). United Nations, Department of Economic and Social Affairs, Population Division (2017). *World Population Prospects: The 2017 Revision, Key Findings and Advance Tables*. Working Paper No. ESA/P/WP/248.
- (4). Babbush CA. Post treatment quantification of patient experiences with full-arch implant treatment using a modification of the OHIP-14 questionnaire. *J Oral Implantol*. 2012 Jun;38(3):251-60.
- (5). Block MS, Haggerty CJ, Fisher GR. Nongrafting implant options for restoration of the edentulous maxilla. *J Oral Maxillofac Surg* 2009;67:872-881.
- (6). Steigenga J, Al-Shammari K, Misch C, Nociti FH Jr, Wang HL. Effects of implant thread geometry on percentage of osseointegration and resistance to reverse torque in the tibia of rabbits. *J Periodontol*. 2004;75(9):1233-41.
- (7). Sartoretto SC, Alves ATNN, Zarranz L, Jorge MZ, Granjeiro JM, Calasans-Maia MD. Hydrophilic surface of Ti6Al4V-ELI alloy improves the early bone apposition of sheep tibia. *Clin Oral Implants Res*. 2017;28(8):893901.
- (8). Data based on the ethics committee project approval under No. 1.677.012 on August 13th, 2016.
- (9). Aparicio C, López-Piriz R, Albrektsson T. ORIS Criteria of Success for the Zygoma-Related Rehabilitation: The (Revisited) Zygoma Success Code. *Int J Oral Maxillofac Implants* 2020;35:366-378.
- (10) DT-2207-080 - Technical Statement, FORM: FORM.P&D.048.013
- (11) Papaspyridakos, P, Bedrossian, A, Kudara, Y, Ntovas, P, Bokhary, A, Chochlidakis, K. Reverse scan body: A complete digital workflow for prosthesis prototype fabrication. *J Prosthodont*. 2023; 32: 452-457. <https://doi.org/10.1111/jopr.13664>.
- (12) Straumann Group internal validation.
- (13) Fernandez-Estevan L, Selva-Otaolaurruchi EJ, Montero J, Sola-Ruiz F. Oral health-related quality of life of implant-supported overdentures versus conventional complete prostheses: Retrospective study of a cohort of edentulous patients. *Med Oral Patol Oral Cir Bucal*. 2015 Jul 1;20 (4):e450-8.
- (14) Allen PF, McMillan AS. A longitudinal study of quality of life outcomes in older adults requesting implant prostheses and complete removable dentures. *Clin Oral Implants Res*. 2003 Apr;14(2):173-9.
- (15) Sharma AJ, Nagrath R, Lahori M. A comparative evaluation of chewing efficiency, masticatory bite force, and patient satisfaction between conventional denture and implant-supported mandibular overdenture: An in vivo study. *J Indian Prosthodont Soc*. 2017 Oct-Dec;17(4):361-372.
- (16) Cardoso RG, Melo LA, Barbosa GA, Calderon PD, Germano AR, Mestriner W Junior, Carreiro AD. Impact of mandibular conventional denture and overdenture on quality of life and masticatory efficiency. *Braz Oral Res*. 2016 Oct 10;30(1):e102.
- (17) Starr JM, Hall R. Predictors and correlates of edentulism in healthy older people. *Curr Opin Clin Nutr Metab Care*. 2010 Jan;13(1):19-23.
- (18) Pengpid S, Peltzer K. The prevalence of edentulism and their related factors in Indonesia, 2014/15. *BMC Oral Health*. 2018 Jul 3;18(1):118.
- (19) Peltzer K, Hewlett S, Yawson AE, Moynihan P, Preet R, Wu F, Guo G, Arokiasamy P, Snodgrass JJ, Chatterji S, Engelstad ME, Kowal P. Prevalence of loss of all teeth (edentulism) and associated factors in older adults in China, Ghana, India, Mexico, Russia and South Africa. *Int J Environ Res Public Health*. 2014 Oct 30;11(11):11308-24.
- (20) Tyrovolas S, Koyanagi A, Panagiotakos DB, Haro JM, Kassebaum NJ, Chrepa V, Kotsakis GA. Population prevalence of edentulism and its association with depression and self-rated health. *Sci Rep*. 2016 Nov 17;6:37083.



Straumann North American Headquarters  
 Straumann USA, LLC  
 60 Minuteman Road | Andover, MA 01810  
 Phone 800/448 8168 (US) • 800/363 4024 (CA)  
 Fax 978/747 2490  
[www.straumann.us](http://www.straumann.us) • [www.straumann.ca](http://www.straumann.ca)



© Neodent® 2025. All rights reserved. Neodent® and/or other trademarks and logos from Neodent® that are mentioned herein are the trademarks or registered trademarks of Straumann Holding AG and/or its affiliates.

® All other trademarks are the property of their respective owners. All rights reserved.

[ifu.neodent.com.br](http://ifu.neodent.com.br)  
[www.neodent.us](http://www.neodent.us) • [www.neodent.ca](http://www.neodent.ca)