

*GRAND POSSIBILITIES
IN SEVERELY ATROPHIC
MAXILLAE CASES*

NEODENT® GM ZYGOMA-S



Grand Morse™
Connection



Helix™
Implant



NeoArch®
Solution



Neodent® GM Zygoma-S

GRAND POSSIBILITIES IN SEVERELY ATROPHIC MAXILLAE CASES

Enhance your practice by providing a solution in severely atrophic maxillae designed to meet patient expectations to implant treatment.

Meeting edentulous patients' expectations of shorter treatment times and immediate aesthetic and functional improvements present significant challenges for clinicians, especially in patients with anatomical deficiencies.

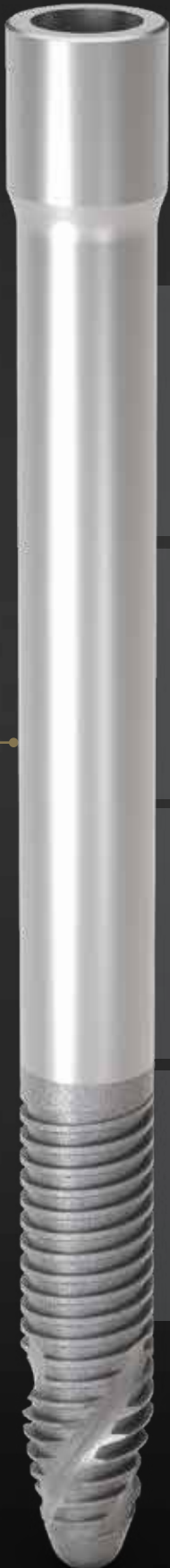
The search for a treatment approach that can provide stability to the prosthesis, less morbidity for the patient, and avoid excess bone procedures. Providing results in a reliable and effective solution to suit higher treatment assertiveness and acceptance rates.

Additionally, complex surgical techniques require efficient drilling protocols and straightforward prosthetic options, respectively to avoid implant deviation and contributing to the treatment's long-term success.

The Neodent® GM Zygoma-S provides an immediate solution as an alternative for bone grafting procedures designed to deliver stability, treatment predictability, and precision, to meet patient expectations through its versatile design, and options tailored to anatomical efficiency and tissue relation.



A SMILE FOR EVERYONE



IMMEDIATE SOLUTION FOR SEVERE ATROPHIC MAXILLA CASE TREATMENTS

Immediate function in shorter treatment times, if graft procedures are avoided



ANATOMICAL EFFICIENCY AND STABILITY

Designed to achieve high primary stability and anatomical compatibility



PROSTHETIC VERSATILITY FOR REHABILITATION NEEDS

A stable and strong foundation designed for long term success



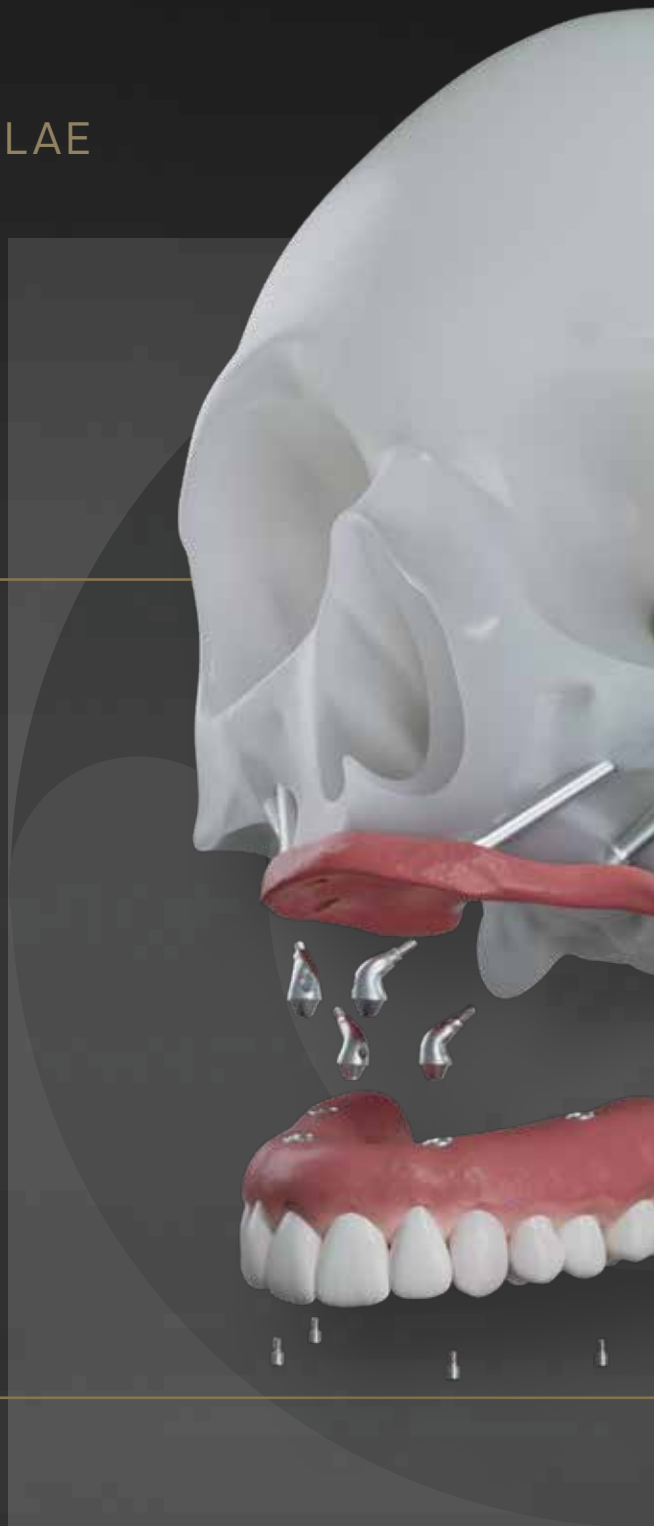
PREDICTABLE SURGICAL RESULTS

Intuitiveness and efficiency in all surgical steps



IMMEDIATE SOLUTION FOR SEVERELY ATROPHIC MAXILLAE TREATMENTS

Neodent® GM Zygoma-S Implant System is part of the NeoArch® Grand Morse™ solution, and offers an optimized solution for immediate fixed treatment protocols in edentulous patients with severely atrophic maxillae, aimed at improving patient satisfaction^[3].



“ The Zygoma-S implant is the result of Neodent treatment concepts evolution, based on versatility and immediate results. It is a cutting-edge solution for atrophic maxilla rehabilitations.

DR. GENINHO THOMÉ ”



IMMEDIATE FUNCTION CAN RESULT IN SHORTER TREATMENT TIMES.

- Alternative implant techniques to avoid the use of grafting procedure.⁽¹⁾
- Optimized implant design to achieve high primary stability in bone types I, II, III and IV.⁽³⁾



IMMEDIATE NATURAL-LOOKING ESTHETICS WITH VERSATILE RESTORATIVE OPTIONS.

- Broad range of gingival heights to address varied clinical needs.
- Options of straight and angled abutments (0°, 17°, 30°, 45°, 52° & 60°).

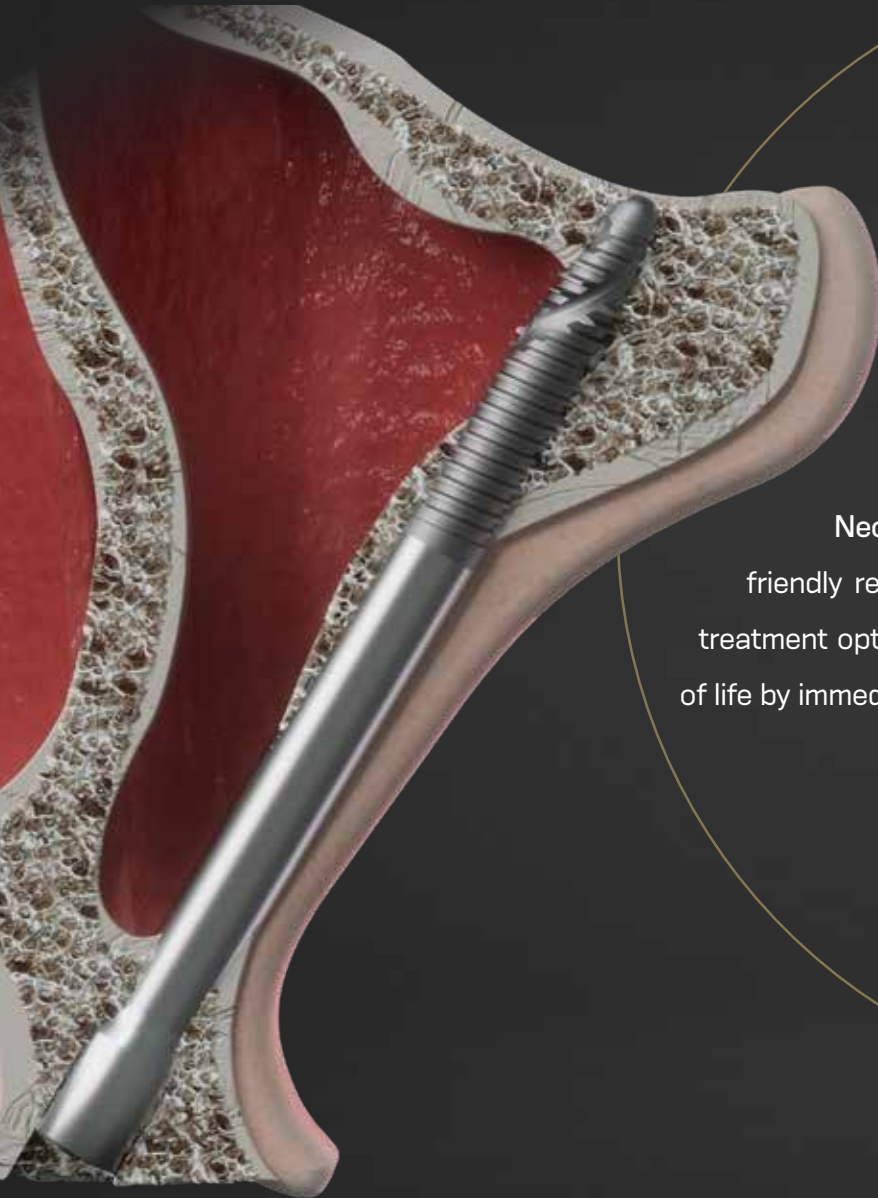


IMMEDIATE PEACE OF MIND DUE TO A STABLE FOUNDATION.

- One connection regardless of the implant diameter.
- Familiar connection combining platform switching with a deep 16° Morse taper and an internal indexation.



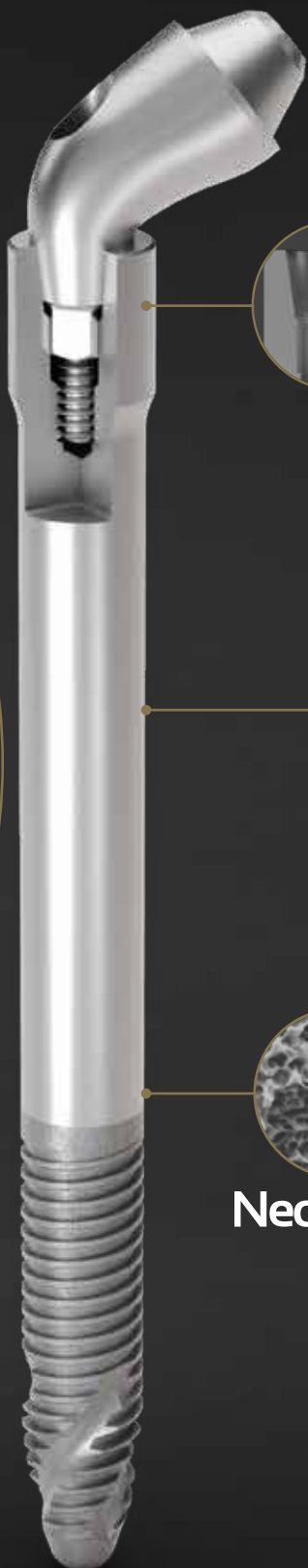
ANATOMICAL EFFICIENCY AND STABILITY



The Neodent® GM Zygoma-S features the unbeatable versatility of Helix™ Grand Morse™ designed for high primary stability for long-term success. Additionally, with the combination of trusted features, the Neodent® GM Zygoma-S offers an anatomical friendly relation, soft tissue preservation and versatile treatment options, which may result in an improved quality of life by immediately restoring function and esthetics^[2].

“ The polished surface of Zygoma-S implant is a game-changer. I know a lot of patients will benefit from the extra-sinus technique with an improved soft tissue approach of this new implant.

DR. RIAD ALMASRI ”



NeoPoros

GRAND MORSE™ CONNECTION: A STABLE AND STRONG FOUNDATION DESIGNED FOR LONG TERM SUCCESS.

- One prosthetic connection for all Grand Morse Implants.
- 16° Morse Taper connection: designed to ensure a tight fit for an optimal connection seal.
- Platform switching morse taper connection: fulfills the platform switching concept.
- Deep Morse taper connection: designed for optimal load distribution.
- Internal Indexation: precise abutment positioning, protection against rotation and easy handling.

IMPLANT DESIGNED TO PROVIDE STABILITY IN SEVERELY ATROPHIC MAXILLAE,^[5] RESULTING IN ANATOMICAL EFFICIENCY

- Implant designed for an extrasinus path.
- Associated with regular implants or Quad Z placement.
- 3.5mm and 3.75mm of diameter.
- Smooth Machined Surface in the implant body aimed at maintaining soft-tissue preservation.
- Coronal portion with 4.3mm of diameter designed to ensure resistance and a tight fit for an optimal connection seal.
- Ten different lengths: 30 / 35 / 37.5 / 40 / 42.5 / 45 / 47.5 / 50 / 52.5 / 55 mm.

HELIX™ GRAND MORSE™: UNBEATABLE VERSATILITY.

- Progressive depth threads at the apical area allow under-prepping of the osteotomy.
- Apex with Neoporos surface, with the potential of osseointegration to enhance the zygomatic anchorage.
- Hybrid contour: enable stability with vertical placement flexibility.
- Dynamic progressive thread design designed to achieve high primary stability in all bone types.
- Active apex: self-tapping.



PROSTHETIC VERSATILITY FOR REHABILITATION NEEDS

Nowadays, patients expect quality of life and want to feel safe performing routine activities. Wherefore efficient dental treatments with short times to recover must assure esthetic results. Furthermore, clinicians have high expectations that prosthetic solutions deliver assertiveness and easy handling for placement or procedure maintenance.

The Neodent® NeoArch restorative portfolio meets those needs by providing versatile options and respecting biological distances, offering optimal abutment angulations and a broad range of gingival heights to address different clinical needs. In addition, achieving immediate function with prosthetics simplifies your workflow, optimizing the emergence profile, regardless of the maxilla atrophy level.



SEVERAL GINGIVAL HEIGHT OPTIONS: ADAPTING TO TISSUE AVAILABILITY.

Several gingival heights and angulations combined with an anatomical shape, short cone and wide angle, resulting in an optimized emergence profile.

OPTIMAL ANGULATION: 17° UNTIL 60°: FITTING TO PATIENT'S ANATOMY.

SHORT CONE, WIDE ANGLE: MAXIMIZING PASSIVE FIT AND ANGLE COMPENSATION.



17°

GINGIVAL
HEIGHTS

1.5 / 2.5 / 3.5 mm

The wide range of angles for Mini Conical Abutments and the special GM design deliver great results for the patient's needs, with favorable and functional prosthesis.

DR. GENINHO THOMÉ



NEW

NEW



30°

45° Slim**

45°**

52°**

60°**

1.5 / 2.5 / 3.5 mm

1.5 / 2.5 mm

1.5 / 2.5 mm

1.5 / 2.5 mm

1.5 / 2.5 mm

**The 45° Mini Conical Abutment, 45° Mini Conical Abutment Slim, the 52° Mini Conical Abutment and 60° Mini Conical Abutment are indicated for use only with Zygoma GM and Zygoma-S.



PREDICTABLE SURGICAL RESULTS

Surgical procedures in patients with extreme bone deficiency are complex and require efficient protocols and accuracy, to avoid implant deviation and assure the treatment's long-term success.

The Neodent® GM Zygoma-S system provides predictability and builds confidence with its straightforward surgical protocol, designed to overcome challenging procedures, from challenging procedures in the extra maxillary zygomatic region, enabling efficiency in all surgical steps.

CONFIDENCE TO PREDICTABLE SURGICAL RESULTS.

The Neodent® GM Zygoma-S protocol features drills designed for a more accurate osteotomy from the surgical beginning, bringing a maximum level of confidence to the surgery by precise initial drilling, preserving anatomical structures, contributing to the accuracy in the implant positioning, regardless of the demanding indications.

NEW

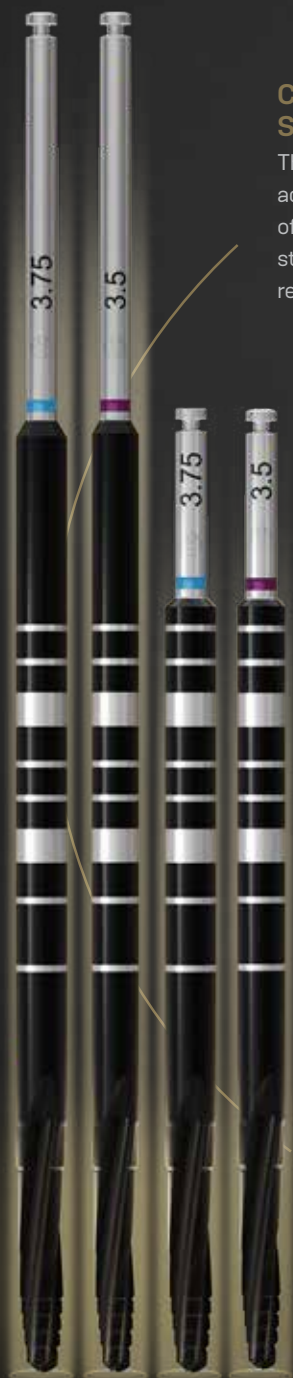
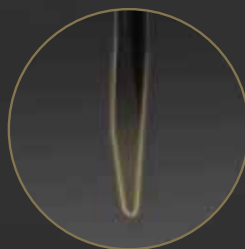
Two different lengths of color-coded drills options, to adapt well to diverse anatomical structures:

- 3.5 and 3.75: 71mm and 100mm

NEW

More precision for initial surgical preparation:

- A Spade drill and a new initial lateral cutting drill: More precision for the initial osteotomy.

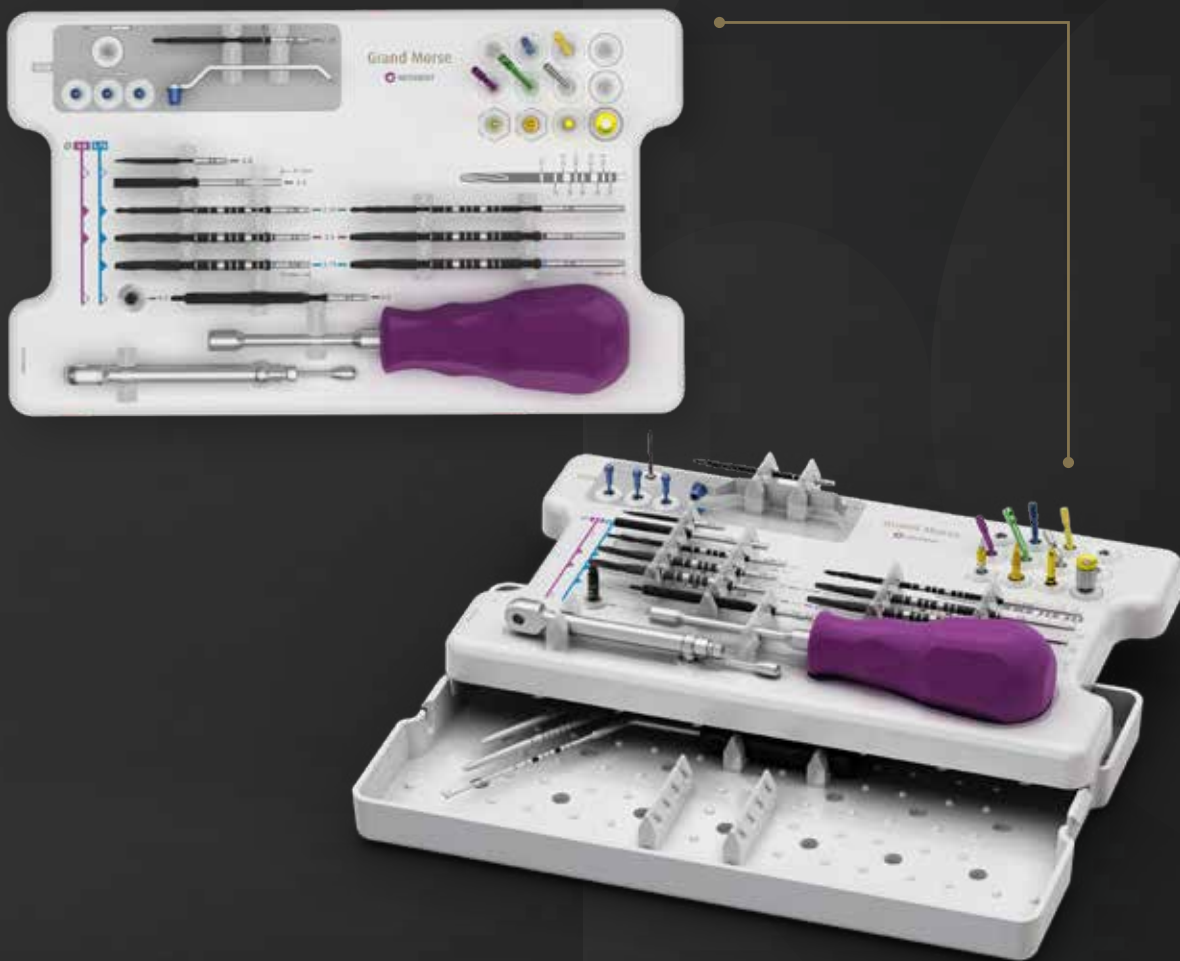


“ The Zygoma-S surgical kit was specially improved for the initial drilling, which enables a very stable osteotomy and a predictable implant placement. ”

DR. LUIS EDUARDO MARQUES PADOVAN

FUNCTIONAL AND INTUITIVE SURGICAL CASSETTE ENABLES SURGICAL EFFICIENCY.

The Neodent® GM Zygoma-S System features an intuitive protocol, with the potential for surgical predictability and efficiency, simplifying the drilling sequence and includes an initial guided procedure



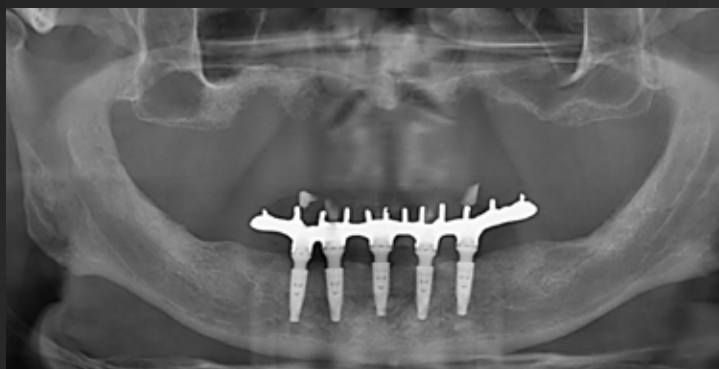
CLINICAL CASE

FULL UPPER ARCH RESTORATION
WITH 4 **ZYGOMA-S IMPLANTS**

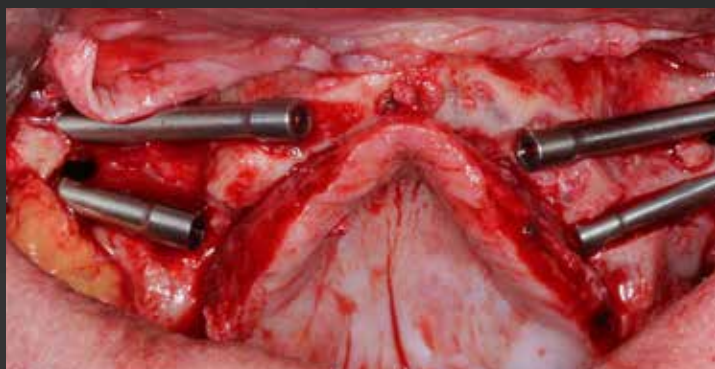
DR. RIAD ALMASRI

USA

Specialty Certificate in Prosthodontics
from the Nova SE University College of
Dental Medicine



Initial panoramic image, before the procedure



Clinical aspect after the placement of 4 Zygoma-S implants



Clinical aspect of final rehabilitation



Final panoramic image, with the bar positioned on abutments

CLINICAL CASE

FULL UPPER ARCH RESTORATION WITH **2 ZYGOMA-S IMPLANTS** COMBINED WITH **3 HELIX GM IMPLANTS**

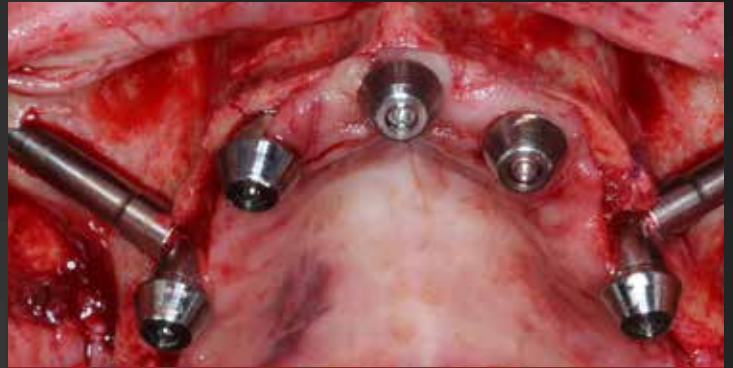
DR. RIAD ALMASRI

USA

Specialty Certificate in Prosthodontics
from the Nova SE University College of
Dental Medicine



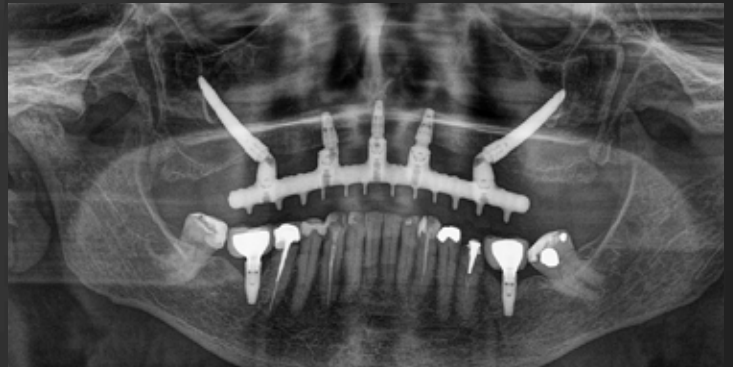
Initial panoramic image, before the procedure



Clinical aspect after the placement of 2 Zygoma-S implants
and 3 Helix GM implants



Clinical aspect of final rehabilitation



Final panoramic image, with the bar positioned on abutments

NOTES

NOTES

[1] "Block MS, Haggerty CJ, Fisher GR. Nongrafting implant options for restoration of the edentulous maxilla. J Oral Maxillofac Surg 2009;67:872-881."

[2] Aparicio C, López-Piriz R, Albrektsson T. ORIS Criteria of Success for the Zygoma-Related Rehabilitation: The (Revisited) Zygoma Success Code. Int J Oral Maxillofac Implants 2020;35:366-378.

[3] "Babbush CA. Post treatment quantification of patient experiences with full-arch implant treatment using a modification of the OHIP-14 questionnaire. J Oral Implantol. 2012 Jun;38(3):251-60."

[4] DT-2207-080 - Technical Statement, FORM: FORM.P&D.048.013

NUOVI SORRISI OGNI GIORNO

CHAQUE JOUR DE NOUVEAUX SOURIRES

НОВЫЕ УЛЫБКИ КАЖДЫЙ ДЕНЬ

JEDEN TAG EIN NEUES LÄCHELN

NUEVAS SONRISAS TODOS LOS DÍAS

NYA LEENDEN VARJE DAG



NEW SMILES EVERY DAY

Straumann North American Headquarters
Straumann USA, LLC
60 Minuteman Road
Andover, MA 01810
Phone 800/448 8168 (US) • 800/363 4024 (CA)
Fax 978/747 2490
www.straumann.us • www.straumann.ca

NOVOS SORRISOS TODOS OS DIAS

CHAQUE JOUR DE NOUVEAUX SOURIRES

USLIT.2198 8/24 V2 PMR

© Neodent® 2024. All rights reserved.

Neodent® and/or other trademarks and logos from Neodent® that are mentioned herein are the trademarks or registered trademarks of Straumann Holding AG and/or its affiliates. All rights reserved.

ifu.neodent.com.br/en
www.neodent.us • www.neodent.ca

