

Neodent® DirectFit™ Screw

**FIT AND FINISH,
WITH DIGITAL PRECISION**

Fit the prosthesis directly on the Multi-Unit Abutments with the Neodent DirectFit Screw, designed to provide accuracy and reliability — the precision essential for digital workflows.



Direct Connection
Screw to Multi Unit
Abutment (5 pack)

116.303



ACCURACY AND RELIABILITY THROUGH ENGINEERED EVIDENCE:

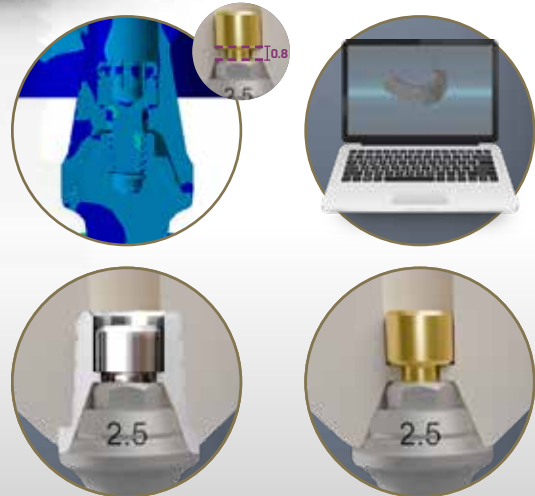
- The 0.8 mm neck geometry is designed to support the prosthesis with consistent mechanical integrity over time
- Precise workflow from planning to milling, available for exocad®, 3Shape®, and CARES® Visual (requires a validated DME file)

FAST-TRACK DIGITAL RESTORATIONS WITH IMPROVED WORKFLOW EFFICIENCY:

- Simplifies the workflow, reducing procedural complexity for both clinic and laboratory
- Reduce turnaround time when compared to existing workflows with titanium copings linked to the restoration

SCALE UP YOUR BUSINESS WITHOUT THE COMPLEXITY OF TRADITIONAL METHODS:

- Remove the risk of coping debonding
- Explore different raw materials[^] combined with a wide range of Neodent implant lines



RESTORATION MATERIALS:



PMMA Temporary



Zirconia Final

[^]Zirconia
N!CE Zirconia HT
N!CE Zirconia LT
N!CE Zirconia XT****
Prettau***

PMMA
N!CE PMMA*

*The N!ce® PMMA material is only recommended for temporary/provisional prosthetic restorations.

**The N!ce® PMMA material should not be used in conjunction with the direct screw on 45°, 52° and 60° mini conical abutments.

***The Prettau® material should not be used in conjunction with the direct screw on NGM micro conical abutments.

****Zirconia XT restorations are indicated for inlays, onlays, veneers, crowns and bridges up to 3 units.

PLATFORMS:

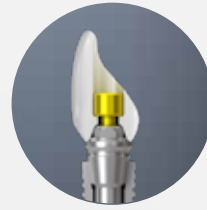
GM Helix®, Helix GM Long, Zygoma GM, GM Zygoma-S



Mini Conical



Helix Short



Micro Conical



GM Narrow GM Helix



Chairside or In Lab Digital workflow



GM Mini Conical Abutment (Straight)

0.8 mm	1.5 mm	2.5 mm
115.243	115.244	115.245
3.5 mm	4.5 mm	5.5 mm
115.246	115.247	115.248

GM Exact Mini Conical Abutment (Angled)



	17°	30°	45°**
1.5 mm	115.275	115.278	115.281
2.5 mm	115.276	115.279	115.282
3.5 mm	115.277	115.280	
	45° slim**	52°***	60°***
1.5 mm	115.302	115.300	115.285
2.5 mm	115.303	115.301	115.286



Mini Conical Abutment Scanbody

108.218



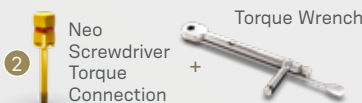
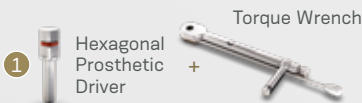
Download the DME File: straumann.us/connectivity.

For the complete details of the Neodent® InLab Validated Workflow please refer to the instructions for use at lfu.neodent.com.br.

Direct Connection Screw to Multi Unit Abutment (5 pack)



116.303



**The 45°/45° Slim Mini Conical Abutment are indicated for use only with Pterygoid implants (GM Helix Ø 3.75/ Ø4.0 x 18mm and GM Helix LG), Zygoma GM and GM Zygoma-S.

***The 52° Mini Conical Abutment and 60° Mini Conical Abutment are indicated for use only with Zygoma GM and Zygoma-S.

© 2025 – JIGC Indústria e Comércio de Materiais Dentários S.A. All rights reserved. Neodent® is a registered trademark of JIGC Indústria e Comércio de Materiais Dentários S.A. exocad®, 3Shape®, and CARES® Visual are registered trademarks of their respective owners: exocad GmbH, 3Shape A/S, and Institut Straumann AG. Unauthorized reproduction is prohibited.