

GROW WITH PEACE OF MIND
NEODENT[®] EASYPACK





MEET PATIENT EXPECTATIONS AND GROW WITH PEACE-OF-MIND IN IMPLANT THERAPY

The search for implant therapy is constantly growing, as patients' awareness increases, including expectations regarding treatment duration.

Today there are various commercially available options with different implant designs, restorative options, workflows that lack guidance and can lead to an increase in complexity, cost and time for both the patient and the clinician.

Neodent® has developed EasyPack to simplify your daily practice. An all-in-one set that offers everything you need to grow while performing dental implant therapy with confidence, convenience and guidance.



Neodent® EasyPack is an all-in-one solution:



GROW WITH CONFIDENCE

Choose a brand and products you can rely on



GROW WITH CONVENIENCE

The certainty of having everything in one package



GROW WITH GUIDANCE

All workflows in simple steps



With the Neodent® **EasyPack**, I am confident that I will have in my reach all the products necessary to assist my patient, from implant placement to provisional restoration to preparing tissues for the final prosthesis. And with the new 3-in-1 GM Smart Abutment, I feel free to choose the most suitable workflow for the case, making it easier to manage inventory and accessory choices.

DR. GENINHO THOMÉ





30 years



Celebrating is a choice

Neodent® is celebrating its **30th** anniversary! Over time, millions of smiles have been created in partnership with professionals worldwide. Throughout the years, the Neodent® continues to celebrate the choice of creating new smiles every day, to change lives of patients in more than **80** countries where the brand is present.



Focused on ease of use, Neodent® Dental Implant Systems works on progressive treatment concepts such as immediacy with modern and reliable solutions to make implant dentistry possible. As the leader in immediate treatment, Neodent® has developed unique features taking into account the key biological principles designed to maximize predictability and achieve long-lasting results.

GROW WITH CONFIDENCE

Grand Morse® Line: A Versatile Implant System

Neodent® **EasyPack** exclusively features the Grand Morse Implant System which is the achievement of 30 years of experience in implant dentistry. It combines a strong and stable foundation to deliver immediate natural looking esthetics with versatility and ease of use.

ONE IMPLANT DESIGN

The Neodent® **Grand Morse**® allows for tailored treatment options according to the specific clinical situation, taking into account the biological principles, while respecting the fundamentals of implant dentistry.

An innovative implant design combining a fully dual tapered body design and a hybrid outer contour maximizing options and efficiency in all bone types.



ONE CONNECTION

The Neodent® **Grand Morse**® connection offers a unique combination based on proven concepts: a platform switch associated with a deep 16° Morse taper including an internal indexation for a strong and stable connection designed to achieve long-lasting results.

All Neodent® **Grand Morse**® implants feature the unique **Grand Morse**® connection regardless of the implant diameter.



ONE KIT

All Neodent® **Grand Morse**® implants can be placed using an intuitive, and functional surgical kit (Conventional or Guided Surgery).

It includes a color-coded surgical workflow as well as simplified restorative instruments with one screwdriver for all healing components and restorative screws.



Find out more about the complete Grand Morse® Surgical and Prosthetic portfolio.
Scan the QR code or access the link below:

<https://www.straumann.com/neodent/com/en/professionals/implant-systems/implants-line/gm-implant-line.html>

GROW WITH CONVENIENCE

Offering implant treatment can represent significant complexity, due to the required assortment, technical specifications and investments. The Neodent® **EasyPack** has been designed to simplify the entire treatment for the most frequent indication: single tooth replacement, from root to tooth.

The Simplicity to Have All-in-one Set

Neodent® **EasyPack** combines in one set all the required components for a single tooth replacement, with implant placement, healing phase, provisional restorations and impressions. Simplifying the access to flexible final restorative options



THE NEODENT® EASYPACK INCLUDES

- 1 Grand Morse® Helix Implant
- 2 Grand Morse® Cover Screw
- 3 Grand Morse® Healing Abutment
- 4 Grand Morse® Hybrid Implant Analog
- 5 Grand Morse® 3-in-1 Neodent Smart Abutment™

NEW



Flexible Solution for Single Tooth Replacement

The Neodent® EasyPack has been developed to offer full flexibility without compromising in simplicity. It enables your access to straightforward options for treating single unit restorations:



SINGLE UNIT

- 1 or 2-stage healing approach
- Immediate or conventional loading
- Closed tray impression or digital impression
- Digital or conventional workflow
- Screwed or cemented restorations

FINAL RESTORATION



GROW WITH GUIDANCE

Today, with the multiplication of technologies, the lack of connectivity, restoring an implant with flexibility remains a challenge for clinicians.

Neodent® has developed the **GM Smart Abutment**, a 3-in-1 combination designed to achieve reliable restorative results with efficiency.

The New Efficient 3-in-1 GM Smart Abutment

The Neodent® **GM Smart Abutment** is a unique patented solution combining a closed tray impression coping, a digital scanbody and a temporary abutment in a single component, enabling you to maximize workflow flexibility with simplicity.



IMPRESSION COPING

With an anti-rotational design, the GM Smart Abutment includes an impression cap, designed for the standard closed tray impression technique.

DIGITAL SCANBODY

Suitable for use with an intraoral or laboratory scanner, the GM Smart Abutment has a unique surface treatment designed for optimal and efficient scanning accuracy.

TEMPORARY ABUTMENT

Made of titanium, the Smart abutment has 2 flexible customizable chimney heights (4 or 6mm) designed to create a custom temporary using conventional or digital workflow.



Reliable Guided Restorative Workflow

Access to guided restorative workflows with Neodent® EasyPack. The combination of the GM Smart Abutment with healing components and the analog allows you to choose a restorative path guided for achieving predictable results.

- 01** IMPLANT PLACEMENT
- 02** HEALING PHASE
- 03** IMPRESSION PHASE
- 04** TEMPORARY RESTORATION
- 05** FINAL RESTORATION



SKIP THIS STEP

OR



COVER SCREW

HEALING ABUTMENT

SCANNING

CLOSED TRAY

TEMPORARY ABUTMENT

SKIP THIS STEP

FINAL RESTORATION



CONVENTIONAL WORKFLOW



DIGITAL WORKFLOW

CLINICAL CASE

Immediate Single-unit Restoration in Lower Posterior Regions Using Neodent® EasyPack



IMMEDIATE
TEMPORARY

1

IMPLANT PLACEMENT

2

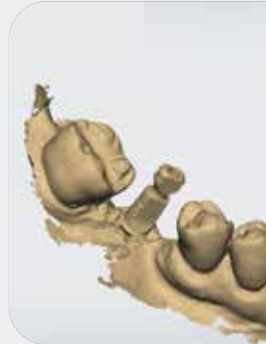
IMPRESSION PHASE



Initial clinical aspect, occlusal view
(area of tooth 46)



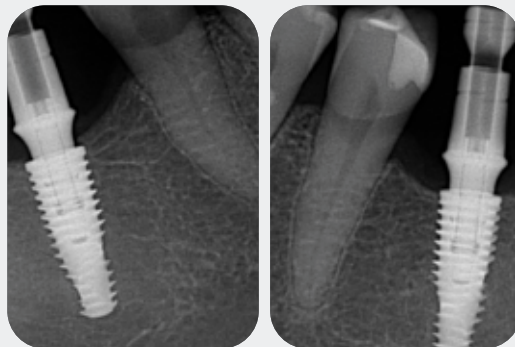
Osteotomy with Neodent® Control System



Implant positions
CAD/CAM



Initial clinical aspect, lateral view
(area of tooth 36)



Immediate periapical radiographs after
implant placement and with the
GM Smart Abutment in position



3 TEMPORARY RESTORATION



4 FINAL RESTORATION



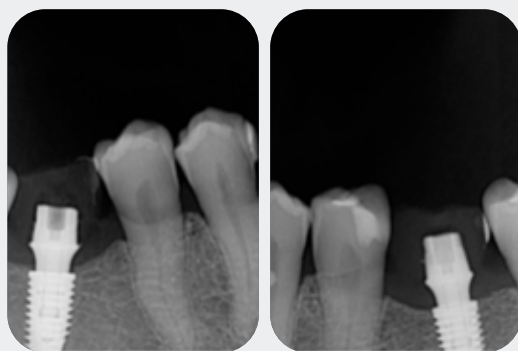
transferred to the software



Milled crowns in PMMA and customized GM Smart Abutments



Final clinical aspect of the definitive prosthetic crown



X-rays after 4 days, with the GM Smart Abutments as Temporary Abutments



Clinical aspect after 4 days

