



CM Drive Acqua



Initial Situation



Dra. Arantza Rodríguez
Madrid, Spain
Oral Surgeon

Dr. José Vallejo
Madrid, Spain
Aesthetics & Prosthodontics



Surgical products	Prosthetic products
CM Drive Acqua 3.5 x 10 mm	CM Titanium Base 3.5 X 4 X 2.5mm 3.5 X 4 X 3.5mm

Clinical Case

- Profile: M. M.
Female, 45
Madrid, Spain
- Clinical Situation:
Dental fracture of tooth 21 and 22
- Restorative Solution:
Extraction, followed by implant placement and immediate temporization with full prosthetic digital workflow using titanium coping and customized zirconia coping

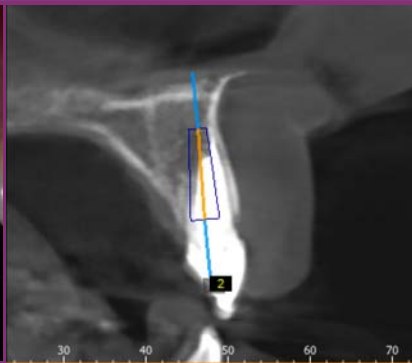


Summary	Immediate loading protocol	
Surgical Description	Maxilla	Anterior
	2 Implants	Conventional
Restorative Solution	CAD/CAM	Provisional: PMMA Final: Ceramic

Clinical Case



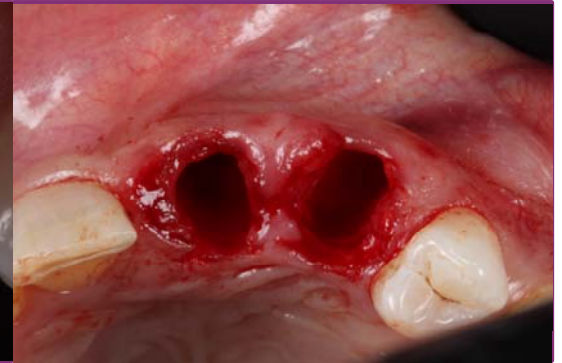
Intraoral frontal view



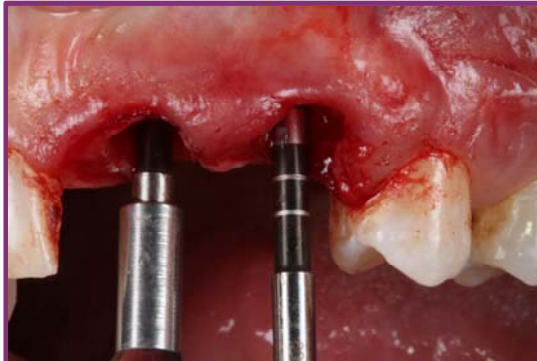
Pre-operative X-ray



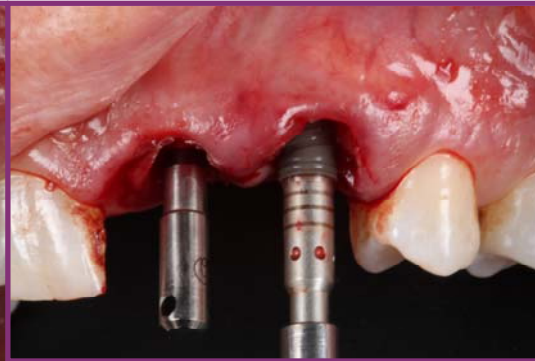
Pre-operative intraoral frontal view



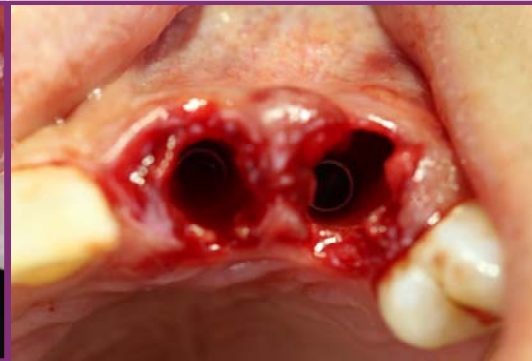
*Extraction sites
Socket that shows the intended correction of
dis-angulation*



Implant bed preparation



*Implant placement
(Drive Acqua 3.5*10mm)
Tooth 21: 3mm subcrestal
Tooth 22: 2mm subcrestal*



Implant in position

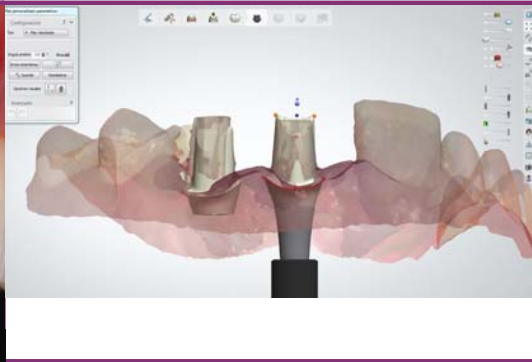


Post provisional restoration X-ray

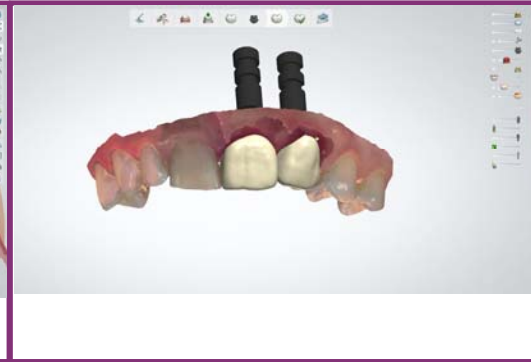
Clinical Case



Intraoral scanbody for digital impression



CAD zirconia coping design



CAD temporary crown design



Abutment in place 4 hours after surgery due to zirconia sintering process



Immediate provisional restoration placement



Immediate provisional restoration in position



Good soft-tissue healing 4 days after surgery



Adjusting the provisional crowns to fit the best emerging profile 6 weeks after surgery

Clinical Case



*Final restoration
1 year after surgery*

1-year follow-up X-ray