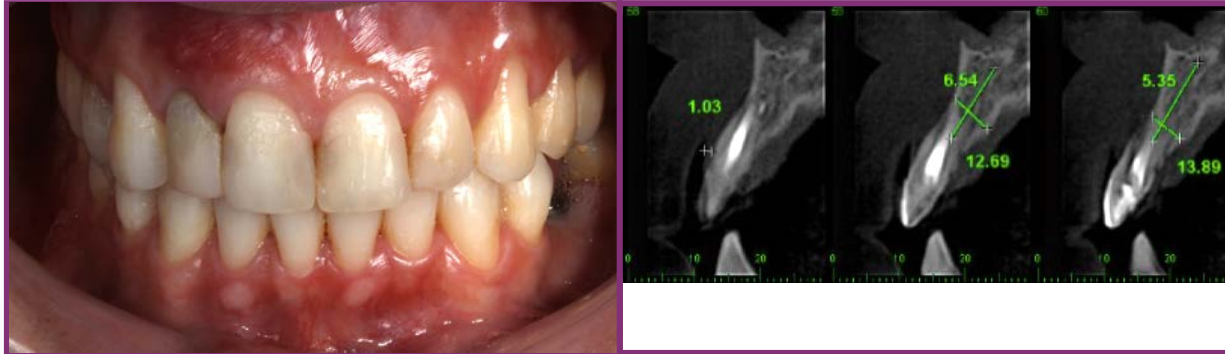


# Clinical Case



CM Alvim NeoPoros



Initial Situation



Dr. Rafael Siqueira, Recife, Brazil  
 Dr. Reinaldo Siqueira, Recife, Brazil  
 Dr. Miguel Braga Pinto, Porto, Portugal  
 Dr. Paulo Santos, Recife, Brazil  
 Dr. Bruno Cabral, Recife, Brazil

- Profile: J.R.T  
 Male, 24 years old  
 Recife, Brazil

- Clinical Situation: Root perforation in tooth 12

- Restorative Solution:  
 Extraction, followed by immediate implant placement, immediate loading, a provisional crown on a universal abutment with "one-abutment-one-time" concept, finalized with a ceramic crown



upper

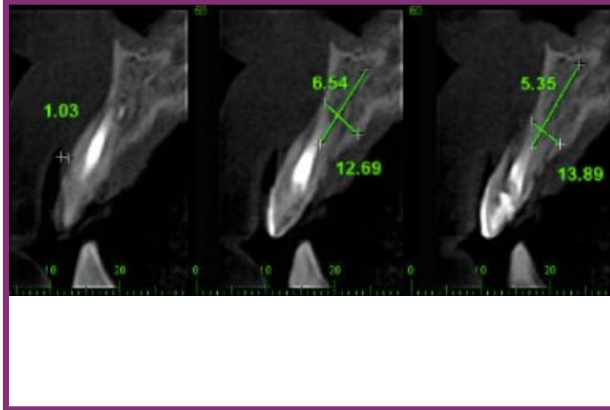


lower

Surgical products	Prosthetic products
CM Alvim NeoPoros 3.5 X 13 mm	CM Universal abutment 3.3 X 6 X 3.5mm

Summary	Immediate loading protocol	
Surgical Description	Maxilla	Anterior
	1 Implant	Conventional
Restorative Solution	Conventional	Ceramic restoration

# Clinical Case



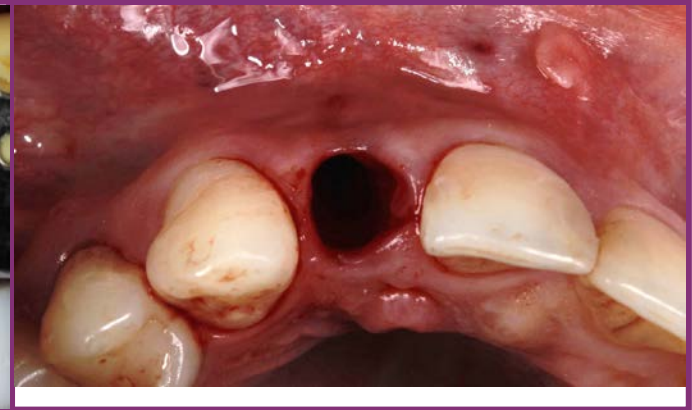
*Pre-operative CBCT*



*Pre-operative intraoral labial view*



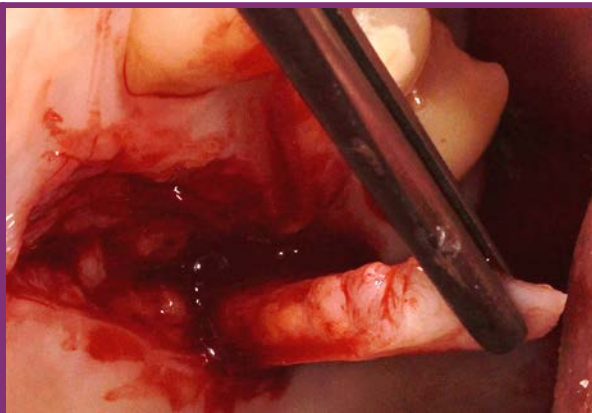
*Minimally invasive tooth extraction*



*Extraction site - occlusal view*



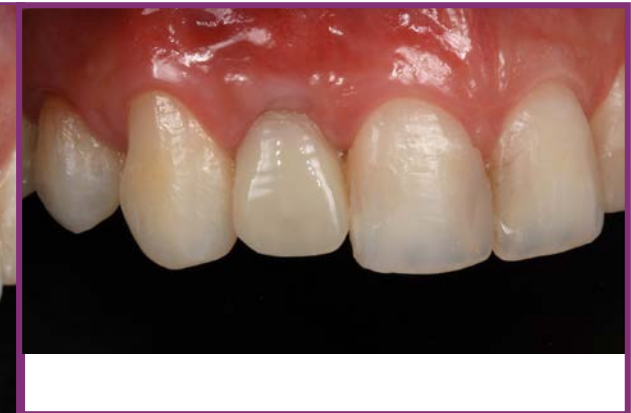
*Implant and abutment in place*



*Connective tissue removed from the palate*



*Connective tissue sutured and immediate provisional restoration in place*



*3-month follow up - intraoral labial view*

# Clinical Case



*Great emergence profile  
3 months after surgery*



*Coping and veneer for the implant restoration*



*Veneer for the adjacent teeth*



*Checking abutment coping fit and color*



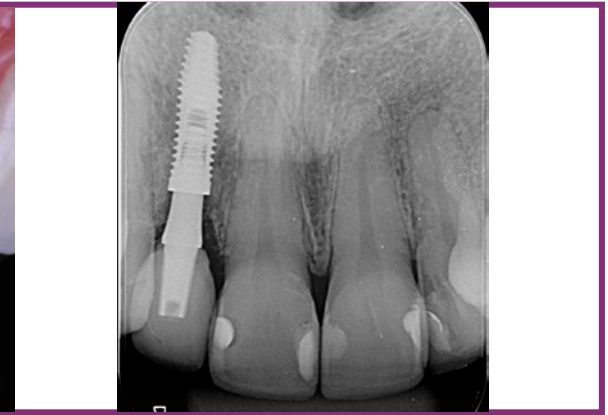
*Final restoration and veneer cementation  
4 months after surgery*



*Final restoration close-up*



*8-month follow up - intraoral frontal view*



*8-month follow-up X-ray*