

Clinical Case



CM Drive NeoPoros



Initial Situation

Dr. Nadeem Zafar

- Qualified Guys Hospital, London 1994
- MSc Implantology, Eastman Institute, London 2000
- Director and tutor, Perio-Implant International Teacher and Speaker

Dr. Alex Tahalani

- Qualified at St. Bart's & The Royal London School of Medicine and Dentistry, 2003
- Post graduate implant training at Warwick University. Director and tutor, Perio Implant International

- Profile: P.M
Male, 55 years old
London, UK
- Clinical Situation:

Patient presented with few upper teeth remaining using a removable partial prosthesis and was looking for a fixed implant solution. The unerupted canine tooth was left in situ.

- Restorative Solution:

Extraction followed by immediate placement of 6 Neodent implants, selection of abutments and conversion of removable immediate prosthesis into a provisional immediate load prosthesis.



upper



lower

Surgical Products	Prosthetic products
CM Drive NeoPoro 3.5 x 10mm	CM Mini Concial Abutment Non-exact
4.3 x 11.5mm	1.5mm height
3.5 x 11.5mm	2.5mm height
3.5 x 10mm	2.5mm height
3.5 x 10mm	1.5mm height
4.3 x 8mm	3.5mm height
	5.5mm height

Summary	Immediate Loading Protocol	
Surgical Description	Maxilla	Full Jaw
	6 Implants	Non-guided
Restorative Solution	CADCAM	PFM

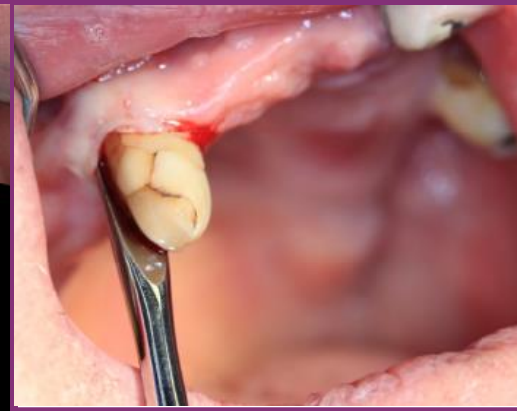
Clinical Case



Pre operative X-ray



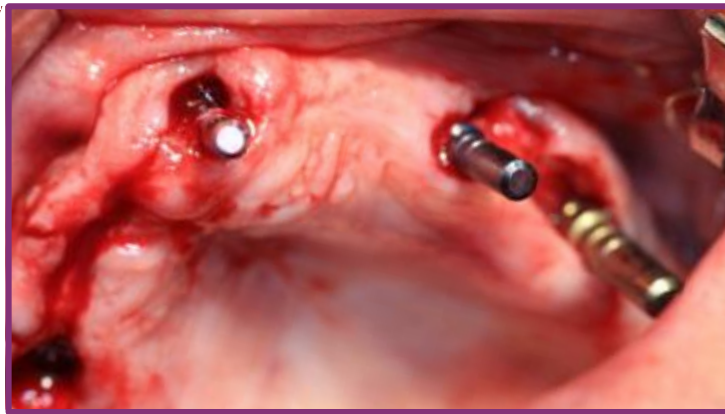
Initial situation intraoral frontal view



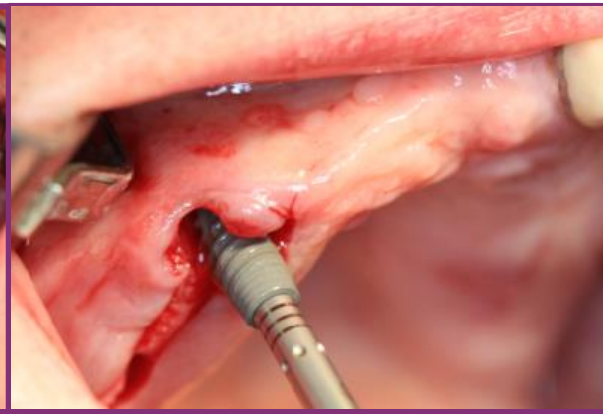
Tooth extraction



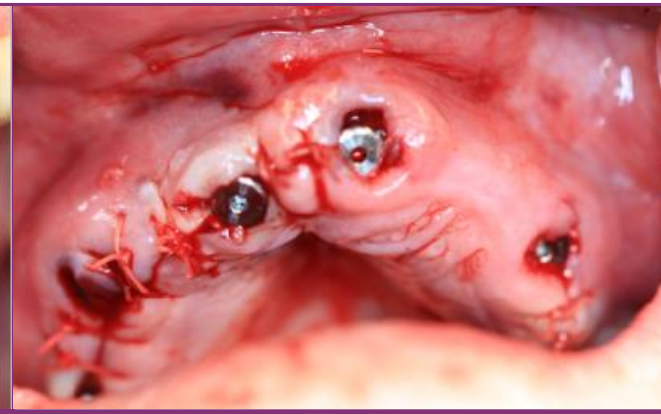
Implant site preparation



Guide pin (Direction indicator) insertion for angulation check

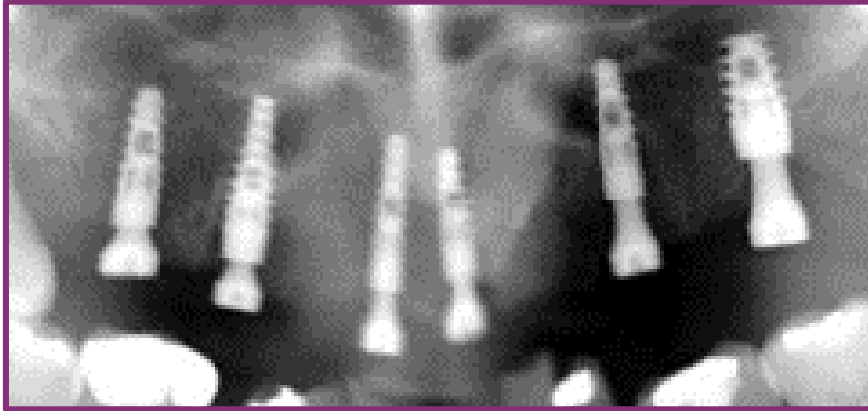


Implants in place



Healing abutments placed and sutured

Clinical Case



Post Operative X-ray



Splinting for impression taking



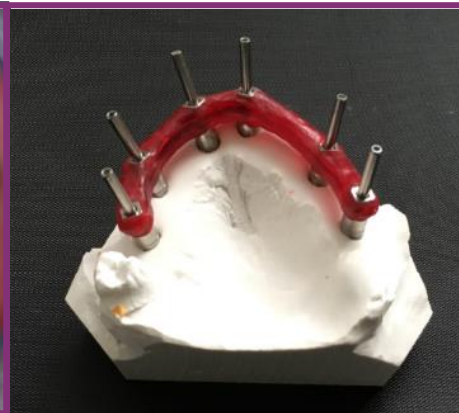
*Patients returned few days after surgery for mini conical abutment and provisional restoration
Model made for provisional restorations*



Denture converted into provisional restorations



*Provisional restoration in place
Extra oral frontal view*



*Verification jig made using open tray impression coping and Duralay
3 months after surgery*



*Metal framework designed with CAD/CAM and try-in;
Bite registration taken*

Clinical Case



Metal framework designed with CAD/CAM



Metal framework with artificial gingiva and individual crowns



Pre-op facial profile



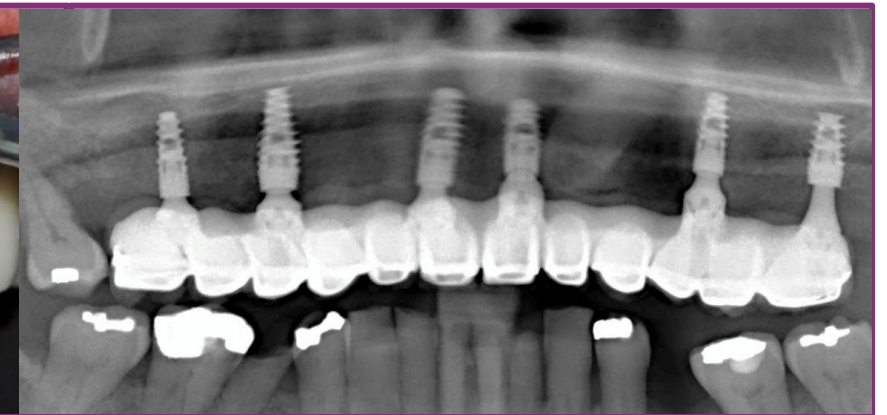
Post-op facial profile



Final restoration with individual crowns cemented



*Photo of final restoration
Intra oral frontal view*



Follow up 1 year X-ray peri-apical