

[BIOMATERIALS]

mucoderm®
Mastering esthetics.

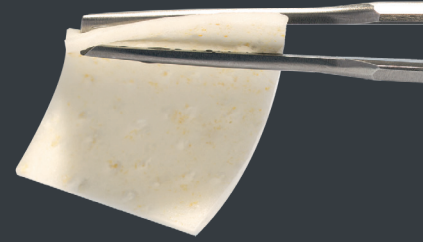


mucoderm®

Porcine 3D collagen graft



mucoderm® provides a true alternative in certain indications to the patient's own connective tissue. This stable 3-dimensional collagen soft tissue replacement, made of porcine dermis, supports fast revascularization and soft tissue integration, including color and texture.



FEATURES AND BENEFITS

Safety and biocompatibility	The particular, certified multi-stage cleaning process of mucoderm® effectively removes all non-collagenous proteins and cells as well as potential immunogens, bacteria and viruses. Hence, mucoderm® is an absolutely safe and pure collagen type I and III matrix. mucoderm® is biocompatible and supports adhesion and proliferation of fibroblasts and endothelial cells.
3-dimensional matrix	The unique, porous structure makes mucoderm® an ideal scaffold for ingrowth of blood vessels and cells and promotes fast tissue integration and revascularization. ^{2,3}
High tensile strength	Due to the structural stability, mucoderm® can be <ul style="list-style-type: none"> • sutured, pinned or screwed • easily cut to the required size and shape • easily applied by the tunnel technique without risk of tearing the matrix apart.
Structure similar to human tissue	mucoderm® is a viable alternative to the patient's own tissue in certain indications: <ul style="list-style-type: none"> • Remodels completely into patient's own tissue within 6–9 months. • Reduces the patients' discomfort and donor site morbidity.

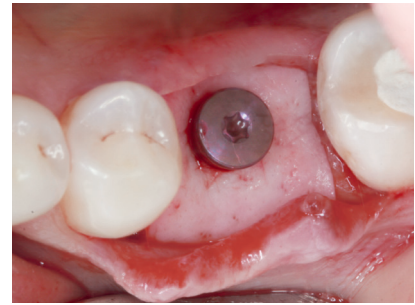


botiss biomaterials GmbH
Hauptstrasse 28
15806 Zossen
Germany

Literature:
https://botiss-dental.com/pdf/mucoderm_LiteratureList.pdf

PROPERTIES

Attribute	Description
Origin	Porcine dermis
Composition	Native collagen type I and III
Thickness	1.2–1.7 mm
Healing/integration time	6–9 months
Storage temperature	Room temperature (< 24 °C)
Shelf life	5 years



Courtesy of Dr. Algirdas Puišys, Vilnius/Lithuania

APPLICATION AND HANDLING

Rehydration

Rehydration of mucoderm® in sterile saline solution or blood for 5–20 minutes prior to application is required. The rehydration time depends on the applied technique and the desired flexibility of the matrix; the longer the rehydration time the higher the flexibility of mucoderm®.⁴

Trimming

After rehydration, the shape and size of mucoderm® can easily be adapted to the defect by trimming it to the desired size with a scalpel or a pair of scissors.



If mucoderm® is only rehydrated for a short time and therefore is not so flexible, cutting or rounding the edges can prevent perforation of the gingival tissue during flap closure. For coverage of multi-

recession defects, mucoderm® may be elongated by cutting the matrix on alternating sides (mesh-graft-technique) and pulling both ends to extend it.

Exposure

The indication determines whether mucoderm® must be covered or may be left exposed. Exposure of mucoderm® should always be avoided in treatment of recession defects. It has to be ensured that the repositioned flap fully covers the matrix. Complete coverage of the matrix ensures ingrowth of

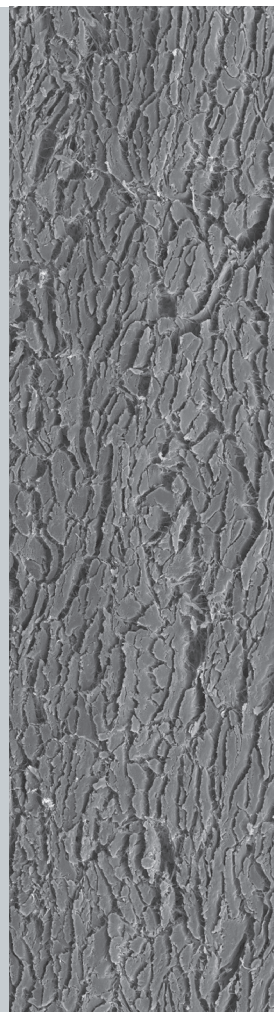
blood vessels and cells from the overlying flap and therefore a rapid incorporation of the graft. Early exposure may lead to fast resorption and contamination of mucoderm® matrix and soft tissue graft failure. Open healing is only possible if minor parts of the matrix are exposed and revascularization can occur from the surrounding margins of the flap. Open healing may also be possible, if mucoderm® is closely fixed to the underlying periosteum, e.g. if you want to increase the width of attached gingiva but not the tissue thickness.

Fixation

When preparing a split flap, mucoderm® should be sutured to the intact periosteum to ensure close contact between the matrix and the periosteal wound bed. Single button or cross sutures may be used; the use of resorbable sutures is recommended.

Postoperative care

After surgery, mechanical trauma of the treated site must be avoided. Patients should be instructed not to brush their teeth on the affected side for 4 weeks following surgery. Plaque prevention may be achieved by mouth rinsing with 0.2 % chlorhexidine solution. After surgery, the patient should be recalled weekly for plaque control and evaluation of the healing process.



Available in the following sizes

Code	Description	Product
BO-701520	15 × 20 mm	mucoderm®
BO-702030	20 × 30 mm	
BO-703040	30 × 40 mm	

Master any challenge.

We love our everyday shoes, our favorite, worn-in sneakers. But would you use them to climb a wall? To go skiing? Or hiking? All-rounders may suit our everyday activities, but challenges need a specific solution to ensure maximum performance and security. Which is why we provide what we believe to be the industry's most comprehensive biomaterials portfolio. A selection of solutions to overcome any obstacle you might face. Products that allow you to go horizontal and vertical. Products with the right "grip" and products that enable you to achieve beautiful esthetics. And of course, we also provide your everyday "sneakers". This is how you master your challenges.



Straumann Group Pty Ltd

7 Gateway Court

Port Melbourne VIC 3207

AU Toll Free 1800 660 330

NZ Toll Free 0800 408 370

customerservice.au@straumann.com

www.straumann.com.au

© Institut Straumann AG, 2019. All rights reserved.

Straumann® and/or other trademarks and logos from Straumann® mentioned herein are the trademarks or registered trademarks of Straumann Holding AG and/or its affiliates.