

# More than a bone block.

## A New Perspective of Bone Augmentation.

Straumann® AlloGraft  
Custom Block

Straumann® AlloGraft Custom Block is an innovative, patient-specific, allogenic bone block that is individually designed and adjusted to the desired 3-dimensional bone contour. Based on the scan data and clinician-approved design, the bone block is custom milled and provided in a sterile condition ready for implantation.

Straumann AlloGraft Custom Block is 100% derived from donor bone provided by LifeNet Health®, a world leading tissue bank.

### BENEFITS

The Straumann AlloGraft Custom Block is a patient individualized bone block that:

- Is easy to apply, because it is custom designed for each individual patient
- Reduces surgical treatment time
- Eliminates the need to harvest autologous bone
- Reduces patient' morbidity and discomfort

### FEATURES

The Straumann AlloGraft Custom Block provides you and your patient a cutting edge treatment option for Guided Bone Regeneration.

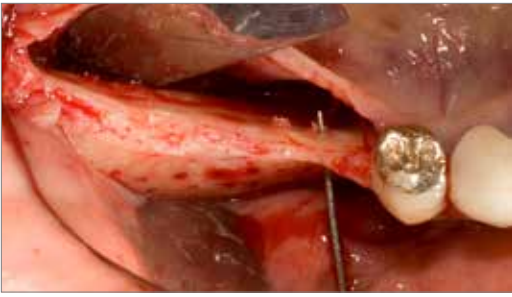
- CAD-designed using a state-of-the art technology
- Custom milled for each case
- Optimizes the contact between the bone block and the recipient's ridge to facilitate revascularization
- Maximum dimensions 23 x 13 x 13 mm

### INDICATIONS

- Large bone defects
- Atrophic maxilla/mandible
- Horizontal/vertical augmentation



## CASE STUDY



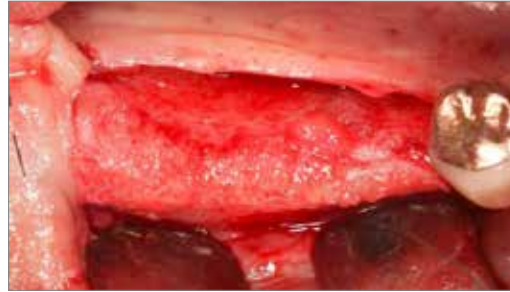
Pre-op situation



Custom designed and milled AlloGraft Custom Block



AlloGraft Custom Block in situ



Successful osseointegration 5 months after surgery

Photos courtesy of Dr. Michele Jacotti



To learn more, contact your Straumann Territory Manager  
or Customer Service.

Buy online at [straumanngroup.us/eShop](http://straumanngroup.us/eShop) or [straumanngroup.ca/eShop](http://straumanngroup.ca/eShop)



### **Straumann North American Headquarters**

Straumann USA, LLC  
60 Minuteman Road  
Andover, MA 01810  
Phone 800/448 8168 (US) • 800/363 4024 (CA)  
Fax 978/747 2490  
[www.straumann.us](http://www.straumann.us) • [www.straumann.ca](http://www.straumann.ca)