

More than a bone graft.

An Innovation of Simultaneous Bone Augmentation and Implant Placement.

Straumann® AlloGraft Ring

Straumann® AlloGraft Ring is an innovative solution to 3-dimensional vertical augmentation of bone defects with a single-stage graft and implant placement. The simultaneous implant placement reduces overall treatment time compared to conventional bone block augmentation. Straumann AlloGraft Ring is a prefabricated ring of processed allogenic donor bone, provided by LifeNet Health®.

BENEFITS

Compared to the 2-stage approach, the Straumann Allograft Ring provides the benefits of:

- Reduced overall treatment time by months
- Reduced chair time by 45 to 60 minutes compared to conventional bone block procedure
- Elimination of the need to harvest autologous bone
- Reduced patient morbidity and discomfort

FEATURES

- Offers a solution to 3-dimensional vertical augmentation of bone defects with simultaneous implant placement
- Designed for reconstruction of the anatomical shape of the jaw
- To be used with 3.3 and 4.1 mm Straumann Bone Level and Bone Level Tapered Implants

INDICATIONS


- Vertical augmentation (3-dimensional defects with low-grade horizontal augmentation)
- Single-tooth gap
- Edentulous space
- Sinus floor elevation

CONTRAINDICATIONS

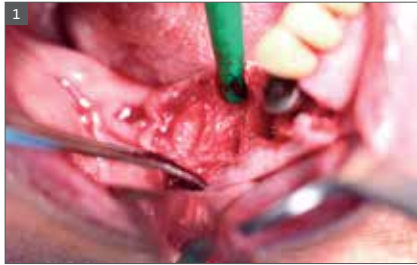
- Sinus with a residual bone height less than 1.0 mm
- Thin parallel-walled crest



PRODUCT DESCRIPTION

Art. No.	Product	Dimension/Image
BR-001	Straumann® AlloGraft Ring Ø 6.0 mm / Ø 3.3 mm, H 10.0 mm	Used with 3.3 mm Straumann® Bone Level and Bone Level Tapered Implants
BR-002	Straumann® AlloGraft Ring Ø 7.0 mm / Ø 3.3 mm, H 10.0 mm	Used with 3.3 mm Straumann® Bone Level and Bone Level Tapered Implants
BR-003	Straumann® AlloGraft Ring Ø 7.0 mm / Ø 4.1 mm, H 10.0 mm	Used with 4.1 mm Straumann® Bone Level and Bone Level Tapered Implants
BR-Kit	AlloGraft Ring surgical kit	

CASE STUDY



1 Situation after tooth extraction



2 Integration of the Straumann AlloGraft Ring into an extraction socket after ring bed preparation



3 Placement of the implant in order to fix the ring with the implant into the residual bone



4 Pre-op x-ray



5 6 month post-op



6 1 year after loading

Photos courtesy of Dr. Bernd Giesenhausen

To learn more, **contact your Straumann Territory Manager or Customer Service in your country.**



To learn more, contact your Straumann Territory Manager or Customer Service.

Buy online at straumanngroup.us/eShop or straumanngroup.ca/eShop



Straumann North American Headquarters

Straumann USA, LLC
 60 Minuteman Road
 Andover, MA 01810
 Phone 800/448 8168 (US) • 800/363 4024 (CA)
 Fax 978/747 2490
www.straumann.us • www.straumann.ca

ifu.straumann.com

© Straumann USA, LLC 2018. All rights reserved.
 Straumann® and/or other trademarks and logos from Straumann® that are mentioned herein are the trademarks or registered trademarks of Straumann Holding AG and/or its affiliates. All rights reserved.

LifeNet Health® is a registered trademark of LifeNet Health, Inc., Virginia Beach, VA.