

More than a compatible graft.

A strong start.

Straumann® AlloGraft is 100% derived from donor bone provided by LifeNet Health®, the worldwide leading tissue bank and organ procurement organization. It's the trusted bone regeneration solution **most similar to a patient's own bone** that provides a strong start and greater confidence for you and your patients.

DEMONSTRATED EFFECTIVENESS

- Scientifically and clinically demonstrated to provide an effective scaffold for new bone growth
- Shown to deliver strong structural support, rapid bone regeneration, and volume preservation^{1,2}

FLEXIBILITY TO FIT CLINICAL NEEDS

- Range of particulate types to complement a range of clinical indications and choices
- Best suited for sinus lifts, extraction sockets, horizontal augmentations, furcation defects, intraosseous defects, peri-implant dehiscence defects, and fenestration defects prior to or after dental implant placement

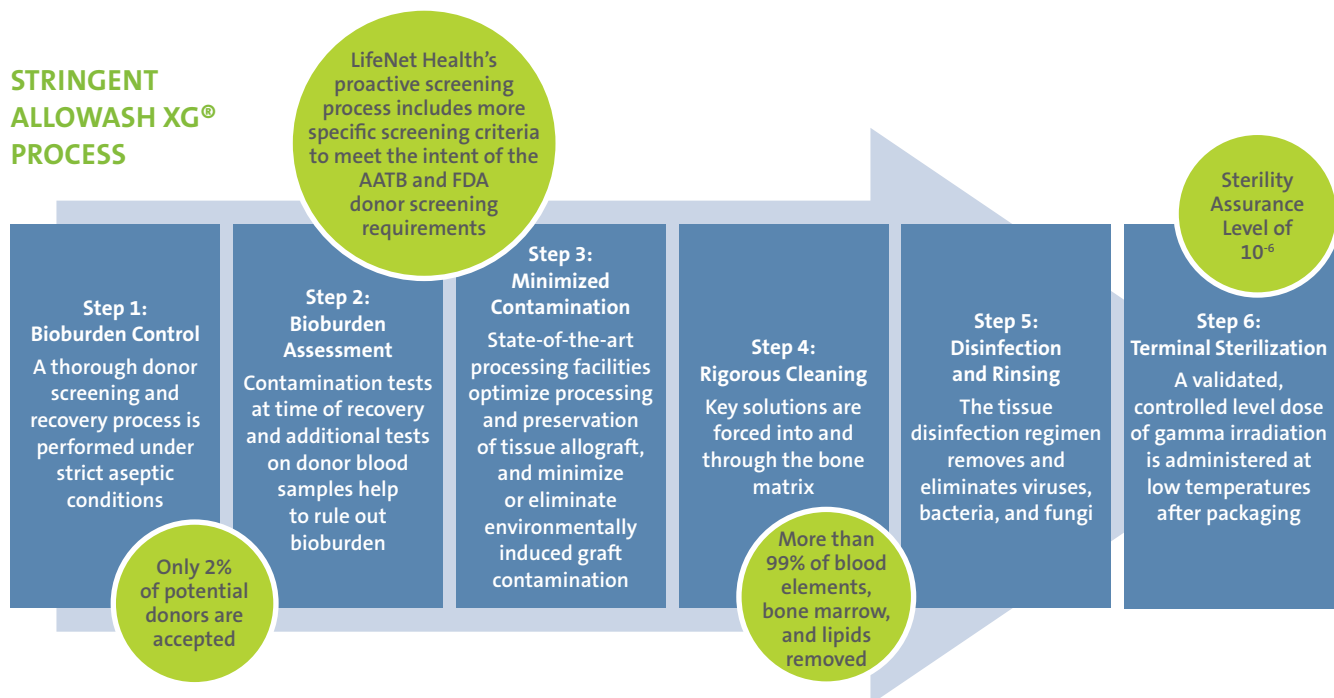
CONSISTENT RELIABILITY

- Processed using a proprietary and patented Allowash XG® technology for a predictable and sterile allograft
- Rigorous process, including terminal sterilization using gamma irradiation after packaging

PROVEN SAFETY RECORD

- Since 1995, more than 5 million bio-implants processed using Allowash® technology have been distributed by LifeNet Health® with no disease transmission

STRINGENT ALLOWASH XG® PROCESS



¹ Eskow AJ, Mealey BL. Evaluation of healing following tooth extraction with ridge preservation using cortical versus cancellous freeze-dried bone allograft. J Periodontol. 2014 Apr;85(4):514-524.

² Wood RA, Mealey BL. Histologic comparison of healing after tooth extraction with ridge preservation using mineralized versus demineralized freeze-dried bone allograft. J Periodontol. 2012 Mar;83(3):329-336.

AVAILABLE GRAFT TYPES

Graft Type	Product Properties	Holds Space	Remodeling Time
Mineralized Cortical (GC)	<ul style="list-style-type: none"> • Additional mechanical resistance • Volume preservation¹ 	Yes	Slow (6+ months)
Deminerlized Cortical (DGC)	<ul style="list-style-type: none"> • Rapid bone regeneration as compared to mineralized allograft • Optimized osteoinductive potential^{2,3} 	No	Fast (3-4 months)
Mineralized / Deminerlized Cortical Blend (GC/DGC)	<ul style="list-style-type: none"> • Combines the benefits of space maintenance of ground cortical with the osteoinductive potential of deminerlized bone to promote rapid bone formation 	Yes	Fast (3-4 months)
Mineralized Cancellous (OCAN)	<ul style="list-style-type: none"> • Highly osteoconductive trabecular structure with interconnecting pores • Supports vascular penetration and bone ingrowth 	Yes	Medium (4-6 months)
Mineralized Mix Cortical/Cancellous	<ul style="list-style-type: none"> • Combines the structural characteristics of cortical and cancellous bone in one product 	Yes	Medium (4-6 months)

¹Rummelhart JM et al. J Periodontol. A comparison of freeze-dried bone allograft and deminerlized freeze-dried bone allograft in human periodontal osseous defects. J Periodontol. 1989;60(12):655-663.

²Zhang M et al. Effect(s) of the deminerlization process on the osteoinductivity of deminerlized bone matrix. J Periodontol. 1997;68:1085-1092.

³Herold RW et al. Effects of varying degrees of allograft decalcification on cultured porcine osteoclast cells. J Periodontol. 2002;73(2):213-219.

CASE STUDY



Clinical situation after tooth extraction



Grafting with Straumann® AlloGraft GC



Clinical situation at re-entry after 5 months healing time

Photos courtesy of Robert Miller, DMD, Fort Lauderdale, FL

To learn more, **contact your Straumann Territory Manager** or **contact Customer Service in your country.**

Buy online at straumann.us/eShop or Straumann.ca/eShop.



Straumann North American Headquarters

Straumann USA, LLC
 60 Minuteman Road
 Andover, MA 01810
 Phone 800/448 8168 (US) • 800/363 4024 (CA)
 Fax 978/747 2490
www.straumann.us • www.straumann.ca

ifu.straumann.com