

BASIC INFORMATION

Straumann[®] Scanbody



TABLE OF CONTENTS









1. PRODUCT DESCRIPTION	4
2. PRODUCT OVERVIEW	4
3. SCANBODY LIBRARIES	5
4. STEP-BY-STEP INSTRUCTIONS FOR USE	6
Step 1 – Disinfection	6
Step 2 – Securing against aspiration	6
Step 3 – Assembly	7
Step 4 – Placement	7
Step 5 – Scanning	7
5. REFERENCE CHART FOR DIMENSIONS	8
6. SCREWDRIVER COMPATIBILITY	9
7. BEVEL ALIGNMENT OF THE SCANBODY	10










1. PRODUCT DESCRIPTION

Scanbodies represent the position and orientation of the respective dental implant, analog or abutment in CAD/CAM scanning procedures. This helps the CAD/CAM software to correctly align the subsequent CAD/CAM restorations.

2. PRODUCT OVERVIEW

See Scanbodies on our eShop.

Connection Type		Platform		Metal Scanbody
TorFit™ BL – Compatible with BLC and BLX Implant Systems		RB/WB	065.0103	
TorFit™ TL – Compatible with TLC and TLX Implant Systems		NT/RT/WT	036.3230	
CrossFit® – Compatible with BL and BLT Implant System		SC	025.0077	
		NC	025.0078	
		RC	025.0079	

Connection Type		Platform	Metal Scanbody
synOcta® – Compatible with Tissue Level Implant System		NNC	048.383 
		RN	048.384 
		WN	048.385 
CI RD – Compatible with Straumann® PURE Ceramic Implant System		CI RD Ø4.1 mm	032.130 
SRA – Compatible with Screw-retained Abutments		SRA Ø3.5 mm	025.0080 
		SRA Ø4.6 mm	025.0081 

3. SCANBODY LIBRARIES

Scans using Straumann® Scanbodies can be used in CARES® Visual, 3Shape and exocad design systems – the most current libraries for Straumann® centralized and in-house prosthetics can be found in our Download Center.

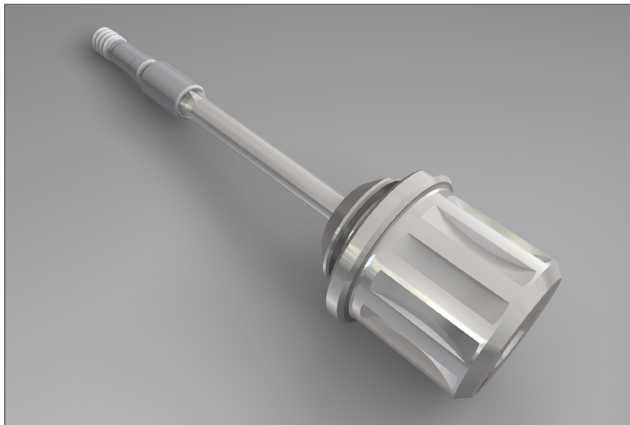


4. STEP-BY-STEP INSTRUCTIONS FOR USE



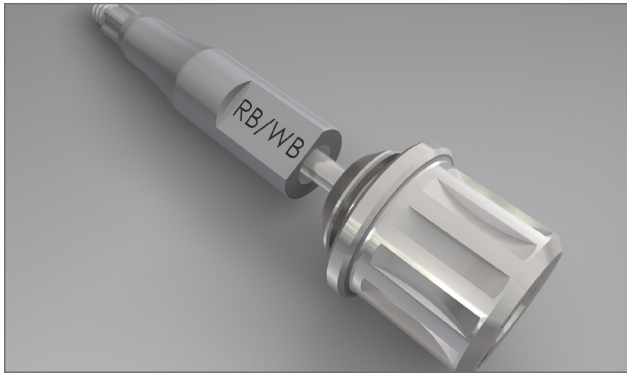
STEP 1 – DISINFECTION

Before first use, the retention screw should be screwed into the scanbody, the internal thread prevents the screw from falling out. Use cleaning agents and disinfectant solutions that are suitable for dental use.



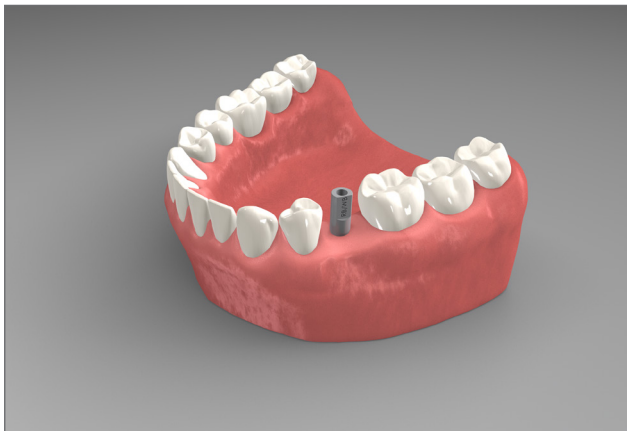
STEP 2 – SECURING AGAINST ASPIRATION

Prevent aspiration of the scanbody and the screw by ensuring that the SCS Screwdriver and the screw properly engage when you pick up the screw. Note that the Extra Short SCS driver cannot be used with CrossFit®, Pure, TorcFit™ BL or TorcFit™ TL platform scanbodies.



STEP 3 – ASSEMBLY

Ensure that the components are clean, disinfected and undamaged (no scratches, deformations or discolorations). The self-retaining screw is a fixation screw for the scanbody on the implant (or on the abutment). To assemble, put the screw into the scanbody and make sure it can still move but does not fall out (self-retaining feature).



STEP 4 – PLACEMENT

Mount the scanbody with the screw on the implant, analog or abutment using the Straumann® SCS driver. Check for proper fit and for any rotational or vertical looseness of the scanbody in the implant or the abutment. Hand-tighten the self-retaining screw. Note: When using the scanbody on abutment level, the scanbody is screwed to the screw-retained abutment. Make sure the engaging features of the scanbody are completely aligned with the retention features of the abutment and that the scanbody is seated properly. Note: If a single-tooth restoration is planned, be sure to orient the flat surface of the scanbody buccally (not adjacent to the approximal teeth). Avoid any contact of the scanbody with the approximal teeth.

STEP 5 – SCANNING

Make sure to select the right scanbody according to the software information. The scanbody is now ready for scanning. Ensure the correct orientation of the scanbody in order to avoid deformation or inaccurate scan information regarding the positioning of the implant, analog or abutment. Follow the instructions provided with the scanner. The Straumann® Scanbodies can be reused.

Please refer to the instructions for use for sterilization and disinfection recommendations.

5. REFERENCE CHART FOR DIMENSIONS

Connection Type	Platform	Metal Scanbody	Diameter	Height
CrossFit® – BL and BLT Implant System	SC	025.0077	∅3.7	13 mm
	NC	025.0078	∅4.0	
	RC	025.0079	∅4.5	
CI RD – Straumann® PURE Ceramic Implant System	CI RD ∅4.1 mm	032.130	∅4.5	12 mm
SRA – Screw-retained Abutments	SRA ∅3.5 mm	025.0080	∅4.0	10 mm
	SRA ∅4.6 mm	025.0081	∅4.5	
synOcta® – Tissue Level Implant Systems	NNC	048.383	∅3.7	11 mm
	RN	048.384	∅5.0	
	WN	048.385	∅5.5	
TorcFit™ BL – BLC and BLX Implant Systems	RB/WB	065.0103	∅4.0	13 mm
TorcFit™ TL – TLX and TLC Implant Systems	NT/RT/WT	036.3230	∅4.0	10 mm




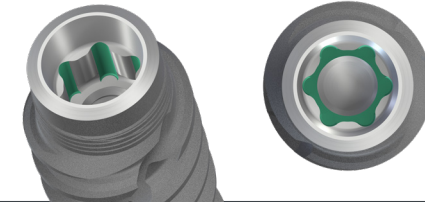
6. SCREWDRIIVER COMPATIBILITY

Note that the Extra Short SCS driver cannot be used with CrossFit®, Straumann® PURE Ceramic Implant System, TorcFit™ BL or TorcFit™ TL platforms.

Connection Type	Platform	Metal Scanbody	Extra Short SCS	Short & Long SCS	
			046.400	046.401 Short	046.402 Long
CrossFit® – BL and BLT Implant System	SC	025.0077			●
	NC	025.0078			●
	RC	025.0079			●
CI RD – Straumann® PURE Ceramic Implant System	CI RD Ø4.1 mm	032.130			●
SRA – Screw-retained Abutments	SRA Ø3.5 mm	025.0080	●		●
	SRA Ø4.6 mm	025.0081	●		●
synOcta® – Tissue Level Implant Systems	NNC	048.383			●
	RN	048.384	●		●
	WN	048.385	●		●
TorcFit™ BLX – BLC and BLX Implant Systems	RB/WB	065.0103			●
TorcFit™ TL – TLX and TLC Implant Systems	NT/RT/WT	036.3230			●

7. BEVEL ALIGNMENT OF THE SCANBODY

This table shows how flat or beveled the section of the scanbody aligns with the implant or abutment connection.

Connection Type	Platform	Metal Scanbody	Bevel Alignment with Connection	Detail
CrossFit® – BL and BLT Implant System	SC	025.0077	Corner	
	NC	025.0078	Flat	
	RC	025.0079	Flat	
CI RD – Straumann® PURE Ceramic Implant System	CI RD Ø4.1 mm	032.130	Flat	
SRA – Screw-retained Abutments	SRA Ø3.5 mm	025.0080	Not applicable	
	SRA Ø4.6 mm	025.0081		
synOcta® – Tissue Level Implant Systems	NNC	048.383	Flat	
	RN	048.384	Flat	
	WN	048.385	Flat	
TorcFit™ BLX – BLC and BLX Implant Systems	RB/WB	065.0103	Corner	
TorcFit™ TL – TLX and TLC Implant Systems	NT/RT/WT	036.3230	Corner	

Straumann North American Headquarters

Straumann USA, LLC

60 Minuteman Road

Andover, MA 01810

Phone 800/448 8168 (US) · 800/363 4024 (CA)

Fax 978/747 2490

www.straumann.us · www.straumann.ca

ifu.straumann.com

ifu.dentalwings.com

ifu.medentika.com

© Straumann USA, LLC 2024. All rights reserved.

Straumann® and/or other trademarks and logos from Straumann® that are mentioned herein are the trademarks or registered trademarks of Straumann Holding AG and/or its affiliates. All rights reserved.

