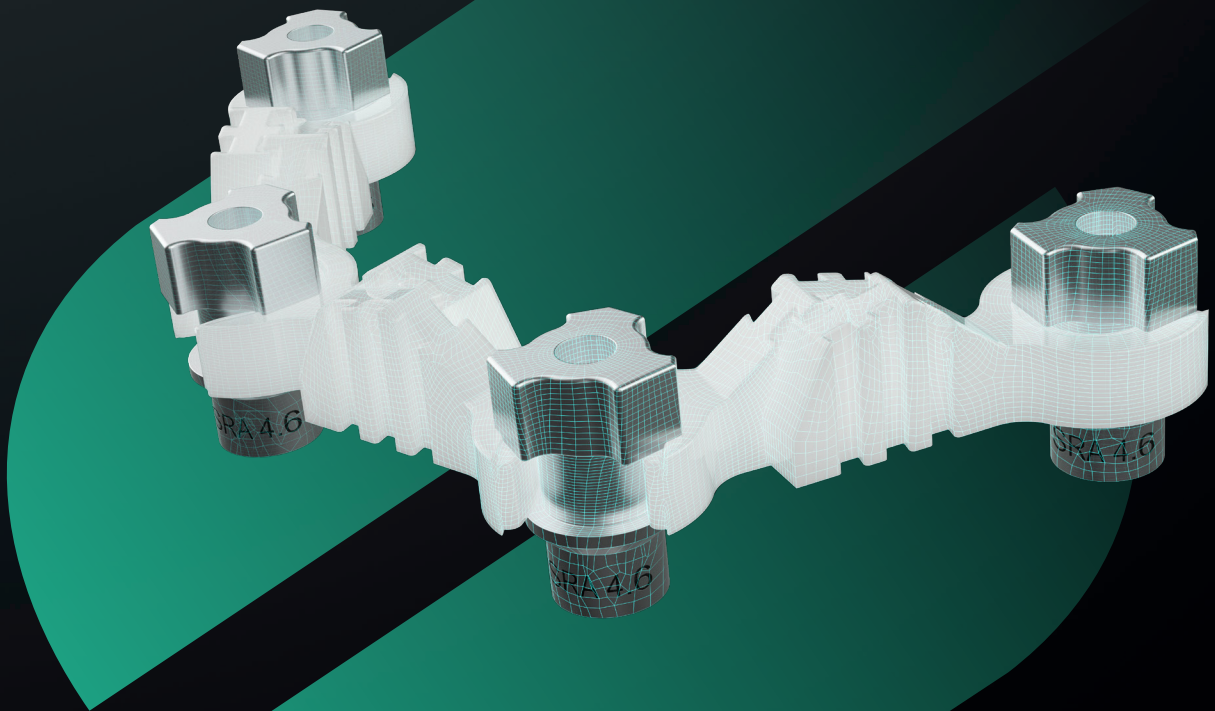


STRAUMANN **EXACT™**

Making the connection



A LANDMARK IN DIGITAL DENTISTRY

DIGITAL FULL-ARCH FROM TEMPORARY TO FINAL RESTORATION

Our goal is to increase efficiency and accuracy for faster time to teeth while minimizing capital investments giving access to fixed full-arch treatment.

Seamlessly integrated with Straumann AXS™ and fully validated with Straumann UNIQ™, Straumann EXACT™ supports accuracy, efficiency, and flexibility for clinicians and labs, making digital full-arch workflows accessible without the high capital investment of photogrammetry.

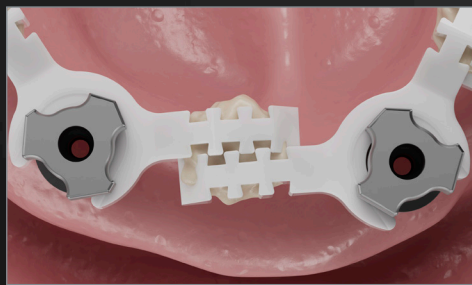
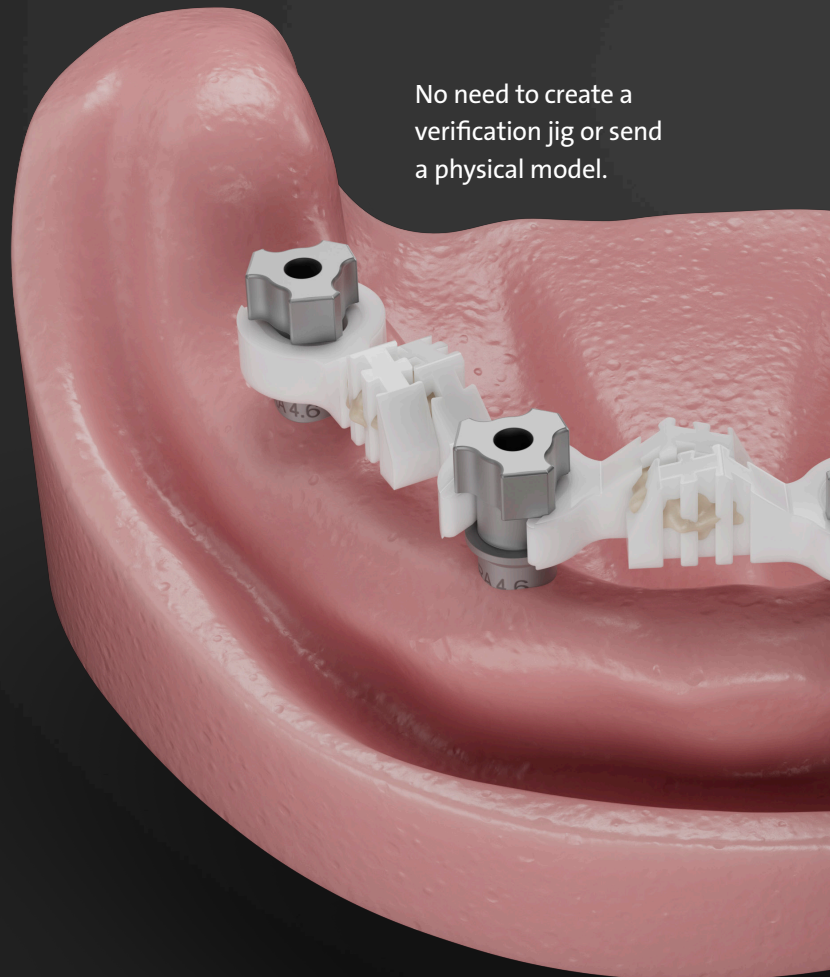


Fig 1: First, the Straumann EXACT™ scanbody BASEs are screwed to the SRAs. Then LINKS should be selected to create the best fit to the abutment positions and anatomy. This results in a rigid scanning bridge which allows the accurate verification of the abutment position.

No need to create a verification jig or send a physical model.





SPEED

Eliminates the need for labor-intensive steps like creating a verification jig and backpouring a model, enabling a fully digital, temporary to final workflow.



ACCURACY

Physical connections between scanbodies may improve IOS accuracy and supports precision for full arch scanning, helping to overcome the limitations of traditional scanbodies.



COST-EFFECTIVE

Provides an alternative to photogrammetry systems without the prohibitive capital investment.



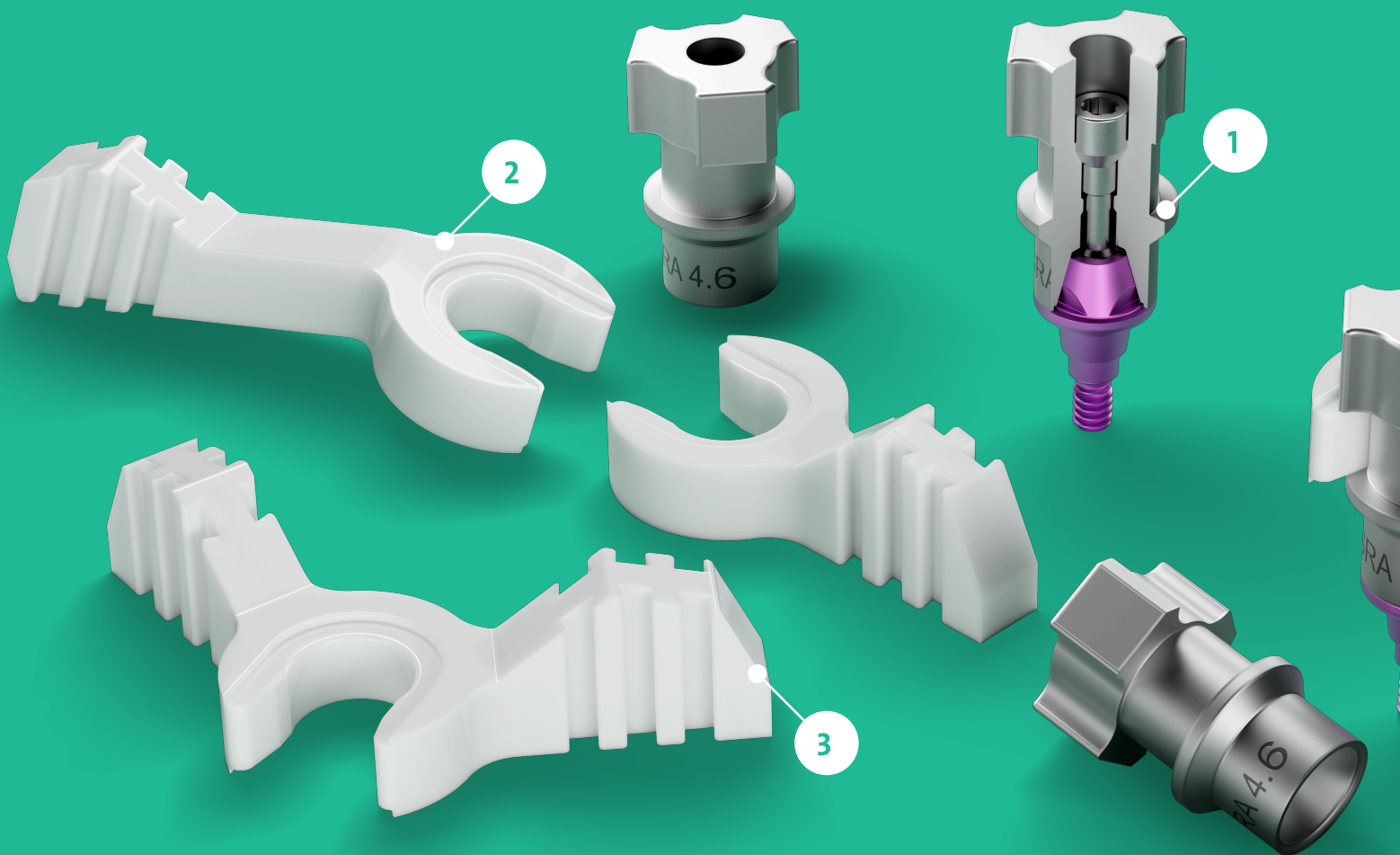
FLEXIBILITY

Compatible with Straumann UNIQ™ and supports collaboration with the preferred lab partner, empowering clinicians with greater control and freedom of choice.

Straumann EXACT™ enables a seamless, cost-effective, accurate, fully digital, validated, treatment workflow for full-arch restorations. Traditional scanbodies fall short in accuracy due to insufficient landmarks for precise stitching. By combining 'BASE' scanbodies with connecting 'LINKS', the system enables precise and cost-effective edentulous scanning, while avoiding analog steps.

DEVELOPED WITH PRECISION AND USABILITY IN MIND

Straumann EXACT™ is the result of in-depth research and development, with over 50 prototypes evaluated across over a 1,000 scans to optimize accuracy and usability.



1 DESIGNED FOR PRECISION

Non-symmetrical, non-congruent BASE shapes improve scanning accuracy, while a direct seat on the screw-retained abutment enables tighter tolerances. Pre-defined notches minimize vertical movement, helping to reduce scan distortions and maintain accuracy.

2 EASE OF USE

The straightforward snap-on design provides tactile and optical feedback, helping to ensure links are securely positioned time after time.

3 VERSATILE CLINICAL APPLICATIONS

- **Simultaneous soft tissue capture** streamlines workflows by eliminating the need for an additional scan step
- **Specialized LINK geometry** is designed to perform effectively in mandibular cases, avoiding interference from the tongue
- **Rotatable LINKS** allow for precise bonding positions suited to each case
- **Four LINK geometries** accommodate a range of clinical scenarios, including cases with fully edentulous patients



Product name		Article number	Description
Scanbody / BASE		025.0084	for Straumann® SRA 4.6
LINKS		025.0086V4	Long LINK
		025.0087V4	Short LINK
		025.0088V4	V-Shape LINK
		025.0089V4	Angled LINK

SHORTEN YOUR PATH TO A PASSIVE-FITTING PROSTHESIS

SCAN



MATCH



UNLOCK THE FULL POTENTIAL OF YOUR IOS

Patients increasingly expect a seamless, enhanced digital experience. They believe it's important for dentists to use digital technology and prefer digital impressions over traditional methods for greater comfort and convenience.

Our scanbody system, Straumann EXACT™, enables you to use existing IOS for full-arch cases, streamlining your workflow and enhancing your capabilities.

SEAMLESSLY SHARE ACCURATE SCANS WITH YOUR PREFERRED LAB

Send your Straumann EXACT™ scans to the lab partner of your choice, giving you the freedom to work with your trusted provider for final restorations.

A in vitro study comparing implant abutment analog position (x, y, z) on a physical model to implant abutment analog position calculated by software from a Trios 3 scan using Straumann EXACT resulted in an average square point deviation of 22.5um (n=4 implant abutment analogs and eight scans were performed)*. A threshold of 50um was set for the test following Andriessen et al.'s postulation that the maximum biologic tolerance of bone caused by misfit of framework may be equal to the maximum lateral movement of 1 implant in bone, which is 50um**.

Reduce chair time and number of patient visits compared to traditional workflows.**

*Data on file

**Andriessen FS, Rijkens DR, van der Meer WJ, Wismeijer DW. Applicability and accuracy of an intraoral scanner for scanning multiple implants in edentulous mandibles: a pilot study. J Prosthet Dent. 2014 Mar;111(3):186-94. doi: 10.1016/j.prosdent.2013.07.010. Epub 2013 Nov 8. PMID: 24210732.

“

Working with your service feels effortless, the flow is very fast and simple. I love the design approval process and the design quality is great. ”

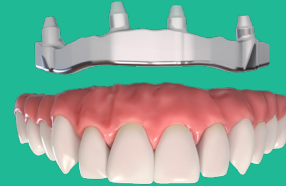
YDL Dental, Texas



Discover
Straumann AXS™



DESIGN



RESTORE

STRAUMANN UN!Q™

Straumann UN!Q™ provides a comprehensive design proposal, that gives dental labs a head start in the workflow. Importantly, labs always retain the final approval and control of the design, to ensure that every detail aligns with their exacting standards.

By outsourcing the bar to UN!Q, labs save valuable time and resources. With the flexibility to mill the zirconia and apply final touches in-house, labs can deliver personalized, premium restorations that meet the needs of clinicians and patients.

STRAUMANN® COREBAR™

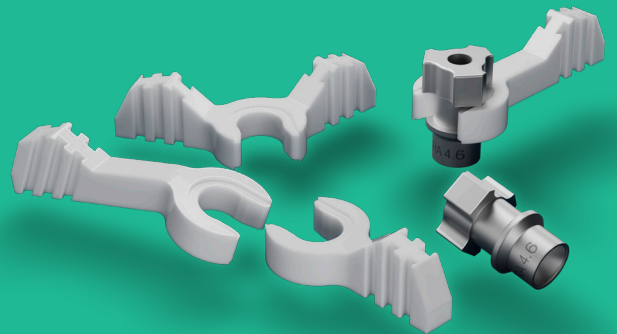
Straumann® CoreBar™ restorations:
Precision meets comfort

- **Patient comfort:** lighter than full zirconia for an improved experience
- Enhanced support
 - Larger surface area for bonding compared to Ti-base copings
 - Enhanced distribution of forces compared to monolithic zirconia restorations screwed directly to multi-unit abutments or cemented to Ti-Base copings
- **Streamlined efficiency:** mill zirconia in-lab while the bar is centrally manufactured by Straumann UN!Q™ using the core file
- Digital workflow ready: no physical model required

Eliminate the need for an additional visit to verify impressions

STRAUMANN EXACT™ – MAKING THE CONNECTION.

- Speed: eliminates the need for labor-intensive steps like creating a verification jig and backpouring a model, enabling a fully digital, end-to-end workflow
- Accuracy: physical connections between scanbodies may improve IOS accuracy and enhance precision for full-arch scanning
- Cost-effective: provides an alternative to photogrammetry systems without the prohibitive capital investment
- Flexibility: compatible with Straumann UN!Q™ and supports collaboration with the preferred lab partner, empowering clinicians with freedom of choice



NAMUT.1760 7/25 V1 PMR

Straumann North American Headquarters

Straumann USA, LLC
60 Minuteman Road
Andover, MA 01810
Phone 800/448 8168 (US) · 800/363 4024 (CA)
Fax 978/747 2490
www.straumann.us · www.straumann.ca

ifu.straumann.com
ifu.medentika.com