

# EDENTULOUS PATIENTS

Straumann® Edentulous Solutions > Removable

**Straumann® RidgeFit**  
Lock in the right fit.







- Increase patient acceptance for implant treatment by minimizing the need for bone augmentation
- Offer more quality of life to edentulous patients with narrow ridges
- Differentiate your practice with Roxolid® and see an increased practice revenue stream
- Give edentulous patients a second chance at a quality life



## Lock in the right fit.

Smiling, laughing and eating naturally add to a quality of life that every edentulous patient would love to maintain.

Now you can provide edentulous patients presenting reduced horizontal bone availability with an immediate removable fixation of their overdenture. You and your patients can rely on a trusted brand, premium quality and long-term scientific evidence. Less invasive\* treatment plans and post-operative discomfort\* can help to overcome many patient doubts.

\* if GBR can be avoided



**ROXOLID® PROVEN  
QUALITY**



**SLA® LONG-TERM  
SCIENTIFIC EVIDENCE**



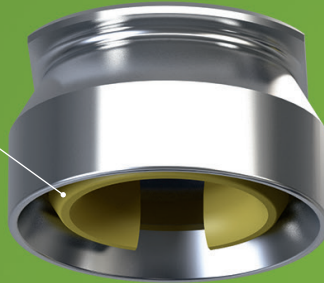
**OPTILOC® DURABILITY  
AND EFFICIENCY**



# RidgeFit System

## Optiloc®

- Minimized maintenance, narrow diameter
- Durable PEEK\* inserts
- TiN\*\* coating for excellent wear resistance

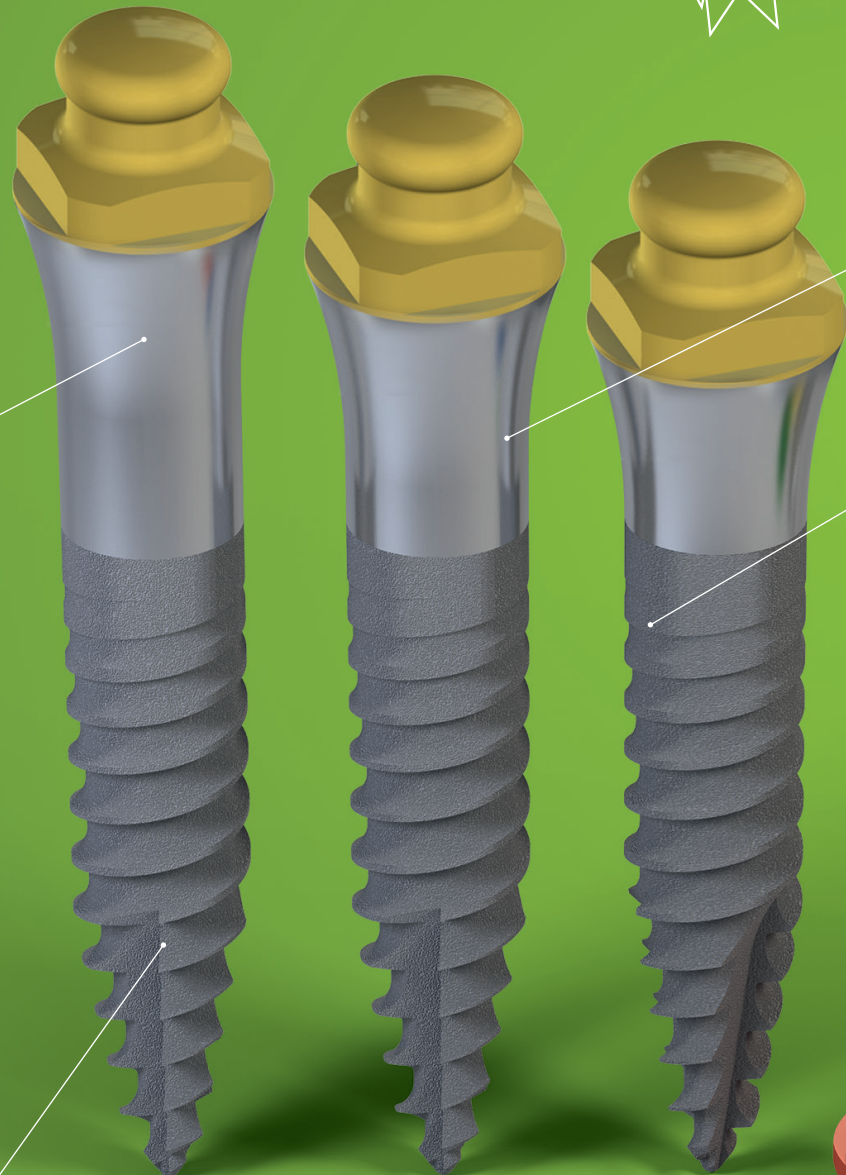


## Additional gingiva heights

- Flexibility and confidence when inserting the implant by respecting the bone availability and gingiva thickness\*\*\*\*
- Designed to keep the Optiloc® component optimally positioned, for good soft-tissue management and reliable connection\*\*\*\*

## Apically tapered implant body design

- Allows underpreparation and supports a high primary stability



\* PEEK: Poly Ether Ether Ketone \*\* TiN: Titanium Nitride \*\*\* Subject to the terms and conditions of the Straumann Guarantee® (see brochure USLIT.502). Matrices and retention inserts are not covered by the limited warranty as these are subject to natural wear and tear.  
\*\*\*\* User RidgeFit Implant System. Data on file.

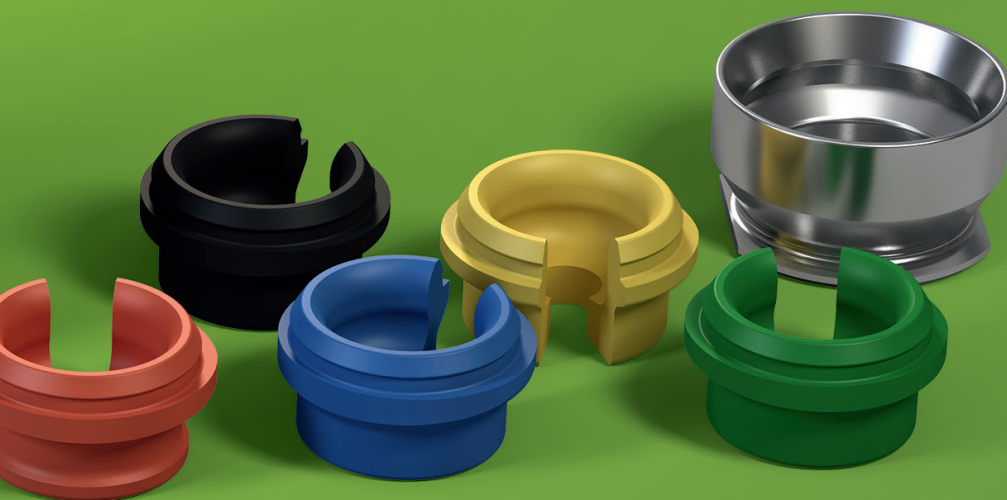


## Roxolid®

- High<sup>1</sup> material strength and biocompatibility<sup>2</sup>
- Peace of mind with RidgeFit Implants

## SLA®

- Predictability in osseointegration<sup>1-7</sup>
- Scientific evidence<sup>1-7</sup>
- Low prevalence of peri-implantitis<sup>2</sup>
- Bone preservation<sup>2,3</sup>



Selection of 6 retention strengths



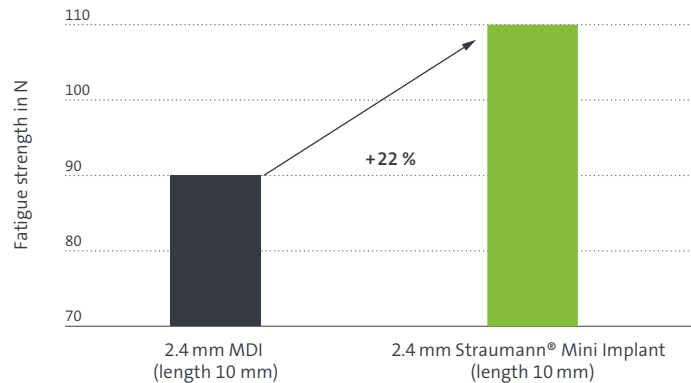


# Designed to trust

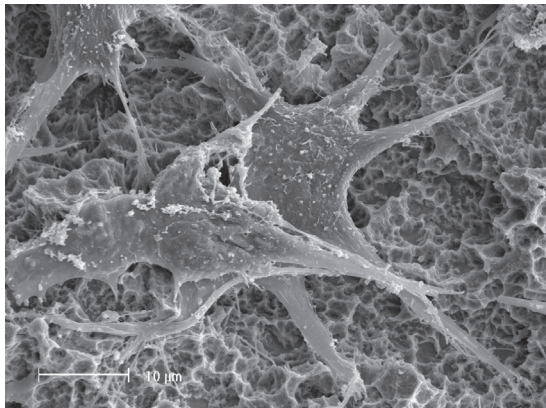


## ROXOLID® – PROVEN QUALITY

- Higher mechanical strength compared to titanium<sup>1</sup>
- The successful use of Roxolid® has been documented in numerous clinical trials with up to 5-year follow-ups<sup>2</sup>



Source: data on file, according to ISO 14801, conditions 2016  
Straumann® RidgeFit Implants, made from Roxolid® show a 22% higher fatigue strength than competitor mini implants.



SLA®

## SLA® – LONG-TERM SCIENTIFIC EVIDENCE

- High and consistent survival rates between 95.1% and 98.8% documented by different studies after 5- and 10-year follow-ups<sup>3-9</sup>
- Very low prevalence of peri-implantitis (1.8%) over the 10-year follow-up period<sup>4</sup>
- Average bone loss of 0.5–1 mm after 10 years (baseline defined as implant loading time)<sup>4,5</sup>

### REFERENCES

**1** Norm ASTM F67 (states min. tensile strength of annealed titanium). **2** Data on file for Straumann cold-worked titanium and Roxolid® Implants, MAT 13336, 20131009. **3** Fischer K, Stenberg T.: Prospective 10-year cohort study based on a randomized controlled trial (RCT) on implant-supported full-arch maxillary prostheses. Part 1: sandblasted and acid-etched implants and mucosal tissue. Clin Implant Dent Relat Res. 2012 Dec;14(6):808-15. **4** van Velzen FJ, Ofec R, Schulten EA, Ten Bruggenkate CM. 10-year survival rate and the incidence of peri-implant disease of 374 titanium dental implants with an SLA surface: a prospective cohort study in 177 fully and partially edentulous patients. Clin Oral Implants Res. 2015 Oct;26(10):1121-8. **5** Cochran DL, Jackson JM, Bernard JP, ten Bruggenkate CM, Buser D, Taylor TD, Weingart D, Schoolfield JD, Jones AA, Oates TW Jr. A 5-year prospective multicenter study of early loaded titanium implants with a sandblasted and acid-etched surface. Int J Oral Maxillofac Implants. 2011 Nov-Dec;26(6):1324-32. **6** Cochran D, Oates T, Morton D, Jones A, Buser D, Peters F. Clinical field trial examining an implant with a sand-blasted, acid-etched surface. J Periodontol. 2007 Jun;78(6):974-82. **7** Bornstein MM, Schmid B, Belser UC, Lussi A, Buser D. Early loading of non-submerged titanium implants with a sandblasted and acid-etched surface. 5-year results of a prospective study in partially edentulous patients. Clin Oral Implants Res. 2005 Dec;16(6):631-8. **8** Rocuzzo M, Aglietta M, Bunino M, Bonino L. Early loading of sandblasted and acid-etched implants: a randomized-controlled double-blind split-mouth study. Five-year results. Clin Oral Implants Res. 2008 Feb;19(2):148-52. **9** Derks J, Schaller D, Håkansson J, Wennström JL, Tomasi C, Berglundh T. Effectiveness of Implant Therapy Analyzed in a Swedish Population: Prevalence of Peri-implantitis. J Dent Res. 2016 Jan;95(1):43-9. doi **10** Badran Z, Struillou X, Strube N, Bourdin D, Dard M, Soueidan A, Hoornaert A. Clinical Performance of Narrow-Diameter Titanium-Zirconium Implants: A Systematic Review. Implant Dent. 2017 Apr;26(2):316-323. **11** Lambert FE, Lecloux G, Grenade C, Bouhy A, Lamy M, Rompen EH. Less Invasive Surgical Procedures Using Narrow-Diameter Implants: A Prospective Study in 20 Consecutive Patients. J Oral Implantol. 2015 Dec;41(6):693-9.




The Straumann® RidgeFit Implant System secures your patient's denture with a snap-fit connection. Using a minimum of 4 implants in the mandible, or a minimum of 6 implants in the maxilla, your patients may have a removable overdenture solution that fits their needs by avoiding additional pain and recovery time if GBR can be avoided. With Straumann RidgeFit Implants, give your patients another chance to lock in the right fit.










Contact your local Straumann representative or visit  
[www.straumann.us/ridgefit](http://www.straumann.us/ridgefit).













## STRAUMANN® RIDGEFIT ROXOLID® SLA®

Art. No.		Article
<b>Straumann® RidgeFit</b>		
042.947S		RidgeFit Implants Ø2.4 mm, GH 2.8 mm, SLA®, TiN, 10 mm, Roxolid®
042.954S		RidgeFit Implants Ø2.4 mm, GH 3.8 mm, SLA®, 10 mm, TiN, Roxolid®
042.956S		RidgeFit Implants Ø2.4 mm, GH 4.8 mm, SLA®, 10 mm, TiN, Roxolid®
042.948S		RidgeFit Implants Ø2.4 mm, GH 2.8 mm, SLA®, TiN, 12 mm, Roxolid®
042.955S		RidgeFit Implants Ø2.4 mm, GH 3.8 mm, SLA®, 12 mm, TiN, Roxolid®
042.957S		RidgeFit Implants Ø2.4 mm, GH 4.8 mm, SLA®, 12 mm, TiN, Roxolid®
042.949S		RidgeFit Implants Ø2.4 mm, GH 2.8 mm, SLA®, TiN, 14 mm, Roxolid®

<b>Auxiliary Parts</b>		
046.796		Paralleling Post for RidgeFit, sterile
170.1-OPT		Adapter Optiloc® for handpiece, length 26 mm
170.2-OPT		Adapter Optiloc® for ratchet, length 17 mm
027.0007S		Needle drill, long, single use
027.0011S		2.2 mm BLT Pilot Drill long, single use, TAN
2102.0024-OPT		Optiloc® Model Analog, blue, 4 pcs.
2102.0012-OPT		Optiloc® Forming/fixing matrix, red, 4 pcs.

## OPTILOC® PROCESSING PACKAGE, RETENTION INSERTS AND MATRIX HOUSINGS

Art. No.		Article
<b>Processing Package</b>		
5202.0001-OPT		Optiloc® Processing package Optiloc® Matrix housing, titanium, 2 pcs. Optiloc® Retention insert, white, light, 2 pcs. Optiloc® Retention insert, yellow, medium, 2 pcs. Optiloc® Retention insert, green, strong, 2 pcs. Optiloc® Mounting collar, silicone, 2 pcs.
<b>Retention Inserts</b>		
2102.0003-OPT		Optiloc® Retention insert, red, extra-light, 4 pcs.
2102.0004-OPT		Optiloc® Retention insert, white, light, 4 pcs.
2102.0005-OPT		Optiloc® Retention insert, yellow, medium, 4 pcs.
2102.0006-OPT		Optiloc® Retention insert, green, strong, 4 pcs.
2102.0007-OPT		Optiloc® Retention insert, blue, extra-strong, 4 pcs.
2102.0008-OPT		Optiloc® Retention insert, black, ultra-strong, 4 pcs.

<b>Matrix Housings</b>		
2102.0001-OPT		Optiloc® Matrix housing, titanium, 4 pcs.
2102.0009-OPT		Optiloc® Matrix housing, titanium, elliptic, 4 pcs.
2102.0010-OPT		Optiloc® Matrix housing with attachment option, 4 pcs.

## OPTILOC® TOOLS AND AUXILIARY PARTS

Art. No.		Article
5102.0000-OPT		Optiloc® Equipment box, incl. 3 tools Optiloc® Mounting tool + model analog reposition aid (blue) Optiloc® Mounting and demounting tool for retention inserts (brown) Optiloc® Matrix housing extractor (gray)
2102.0023-OPT		Optiloc® Processing Spacer, white, 4 pcs.
2102.0011-OPT		Optiloc® Mounting collar, silicone, 10 pcs.
3202.0001-OPT		Optiloc® Mounting and demounting tool for retention inserts (brown)
3202.0002-OPT		Optiloc® Mounting tool + model analog reposition aid (blue)
3202.0003-OPT		Optiloc® Matrix housing extractor (gray)
046.795		X-ray Reference Foil for RidgeFit
049.076V4		X-ray reference spheres, Ø5 mm, stainless steel
046.119		Ratchet includes service instrument length 84 mm stainless steel
066.1100		Torque control device for ratchet – surgical, stainless steel
046.064		Holding Key length 85 mm stainless steel
045.111V4		Cleaning Brush for Ratchet length 100 mm, Ø4.5 mm Stainless steel/Nylon

## MODULAR CASSETTE COMPONENTS

Art. No.		Article
041.761		Straumann® Modular Cassette, A Module
041.762		Grommet Tray, 6 small
041.764		Grommet Tray, 3 small + 3 large
041.766		A Module Ratchet Tray

## Straumann North American Headquarters

Straumann USA, LLC  
60 Minuteman Road  
Andover, MA 01810  
Phone 800/448 8168 (US) • 800/363 4024 (CA)  
Fax 978/747 2490  
www.straumann.us | www.straumann.ca

ifu.straumann.com

© Straumann USA, LLC 2021. All rights reserved.

Straumann® and/or other trademarks and logos from Straumann® that are mentioned herein are the trademarks or registered trademarks of Straumann Holding AG and/or its affiliates. All rights reserved. Products indicated with ® are registered brand names of respective manufacturers.