

10 reasons to choose Straumann® Novaloc®

1 LONGER LIFE SPAN OF RETENTION INSERTS*

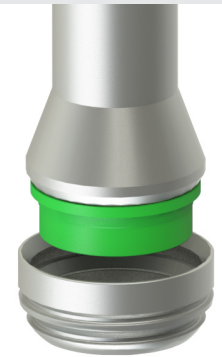
The retention inserts are made of the high-performance polymer PEEK and can optimally absorb lateral pressure with the patented design. The radial anchoring technology prevents damage to the retention inserts.

**compared to TiN and Nylon components
(see data on file from other Novaloc charts)*



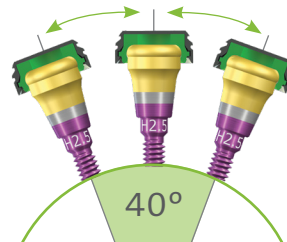
2 OUTSTANDING HANDLING

Novaloc® retention inserts can be inserted and removed within 5 seconds. Accessories such as the low profile forming matrix and the easy to use matrix housing extractor tool guarantee a stress-free handling experience.



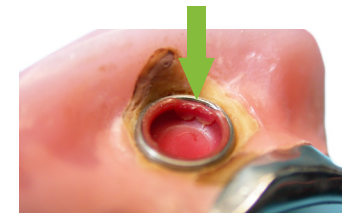
3 FLEXIBLE

Choose between 6 retention inserts with a variety of retention forces. Retention inserts accommodate divergences up to 20 degrees per implant.



4 LESS WEAR AND TEAR

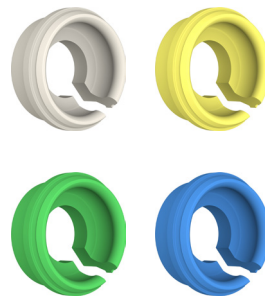
Novaloc® retention inserts need no central retentive element (considerable advantage with regard to damage). PEEK has better physical properties than nylon.*



Conventional damage to Nylon inserts commercially available

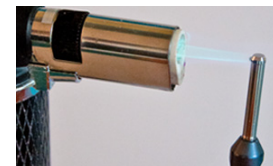
5 SIMPLICITY

Novaloc® only requires 4 replacement males in 80% of all cases. Easy to understand color code according to retention value.



6 NO MORE HOT FINGERS

Matrix housing extractor



1. Heat extraction head



2. Insert into matrix housing briefly to transfer heat



3. Apply leverage to remove matrix housing

**Data on file*

7 ACCURATE IMPRESSIONS

New Forming/Fixing Matrix design leads to accurate positioning in the mouth. It can also be used with templates, bite registers and rails.



Low profile precision design



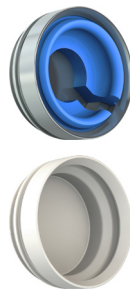
9 USER-FRIENDLY KIT

- No gaps in inventory
- Ensures overview and order
- No mixing when the cover is closed
- Ordering number legible in the cover
- Storage for all instruments



10 NO METAL SHINE THROUGH *PEEK Matrix Option*

Matrix housings available in beige PEEK to ensure no shine through for situations when there is very little space or when metal-free is a requirement.



8 SIMPLE HANDLING OF THE REPOSITION AID AND DEMOUNTING TOOL

