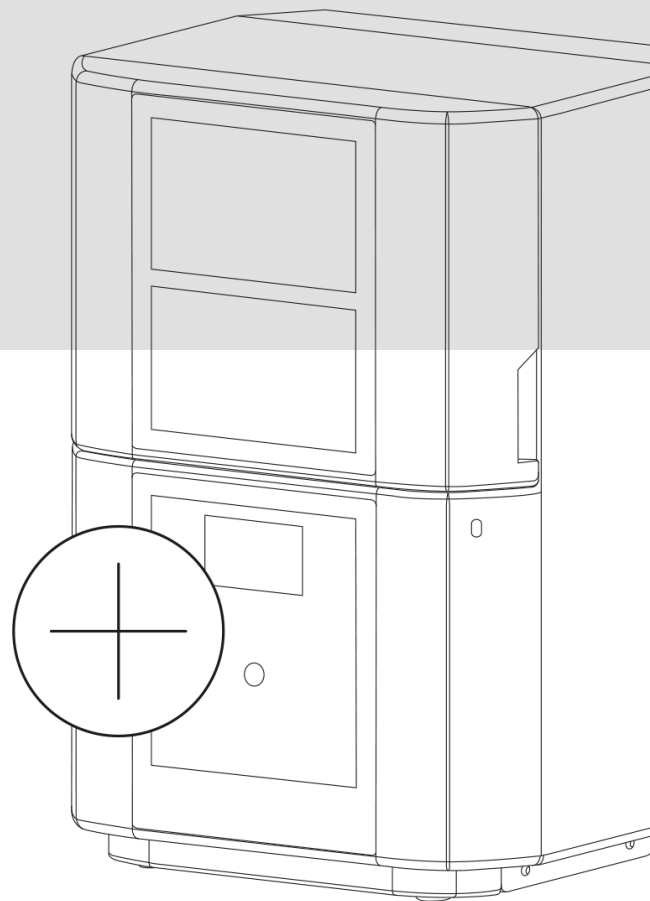




Adding a Machine in Netfabb

Translation of the Original Instructions



EN

About the Instructions

These instructions describe the procedure of how to add a machine in Netfabb.

The personnel must read and understand this manual before beginning any work. Basic requirement for safe working is the compliance with all safety and handling instructions given in this manual.

Any passing on as well as reproduction of this document, utilization and communication of its contents are strictly prohibited unless expressly permitted. Violation obligates compensation. The original instructions were written in German.

Technical Service

Please contact your distributor or Rapid Shape.

1 General

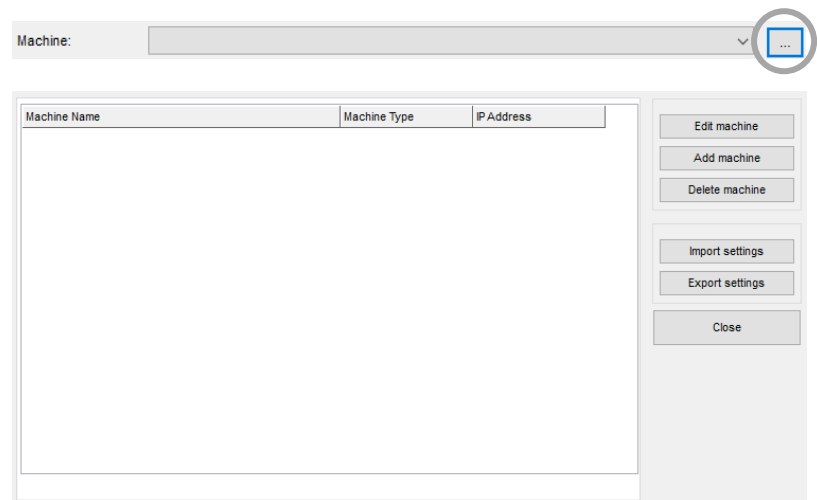
If you are using Netfabb for the first time or if you have received a new machine and want to work with the already installed Netfabb version, you have to add the machine in Netfabb.

Note: For adding a machine, a machine workspace must be selected and loaded.

2 Procedure

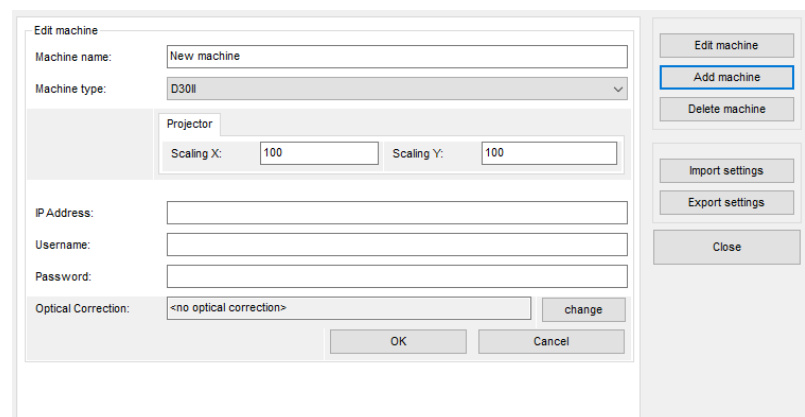
Step 1 Open the Machine Library

1. Click on the button “...” on the right of the machine selection bar.
2. The “Machine Library” will be opened.
(If you are using Netfabb for the first time, the library will be empty. Added machines will be displayed here.)



Step 2 Add your Machine

3. Click on the button “Add machine” in the right-hand column.
4. Several input fields for the machine parameters will be displayed.



Fill in the Machine's Settings

5. Fill in the data of your machine:

Machine name:

Feel free to fill in any name you want (e.g. D30II No.1).

Machine type:

The machine type represents the machine workspace loaded.

Projector:

Every machine has its own scaling values. For entering the values of your machine, please open the subfolder no. 6 ("Calibration and Scaling\serialnumber.jpg") on the flash drive received with the machine.

IP Address:

If you want to send your print jobs to the printer via network connection, please enter the IP Address shown on the printer's display.

Username/Password:

Enter the username and the password.
(Username: rapid / Password: shape)

Optical Correction:

Only applicable at machines with optical correction. The values of the optical correction are adapted to each individual machine. For entering the values of your machine, click on the button "Change" to the right of the display. Open the subfolder no. 7 ("Opt/Corr\serialnumber.rshapeoptcorr") on the flash drive received with the machine and double-click on the file. The values will be uploaded to Netfabb automatically.

6. Apply the new settings by pressing the button "OK".
You successfully added a new machine.