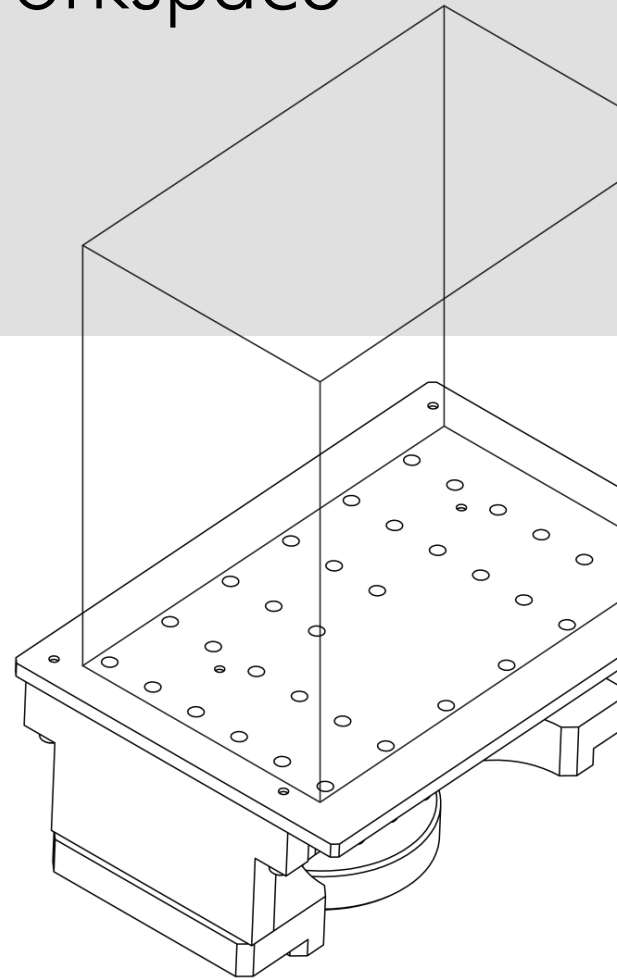




Creating a Machine Workspace in Netfabb

Translation of the Original Instructions



EN

About the Instructions

These instructions describe the procedure of how to create a machine workspace in Netfabb.

The personnel must read and understand this manual before beginning any work. Basic requirement for safe working is the compliance with all safety and handling instructions given in this manual.

Any passing on as well as reproduction of this document, utilization and communication of its contents are strictly prohibited unless expressly permitted. Violation obligates compensation. The original instructions were written in German.

Technical Service

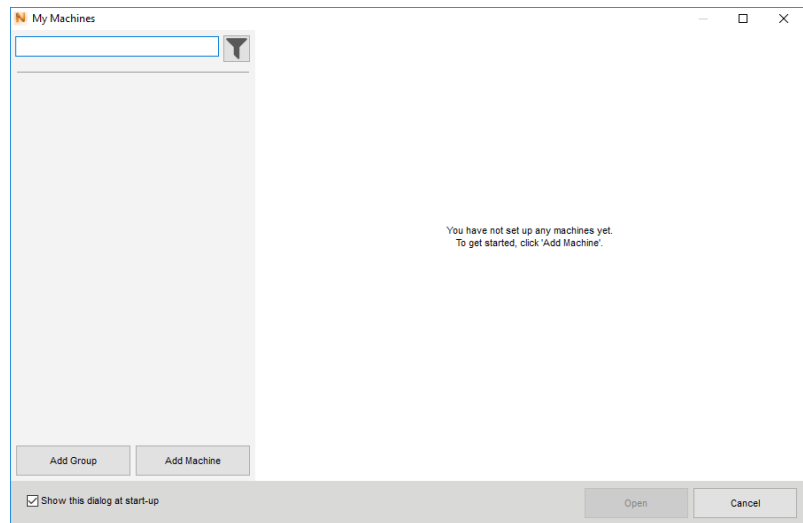
Please contact your distributor or Rapid Shape.

1 Procedure

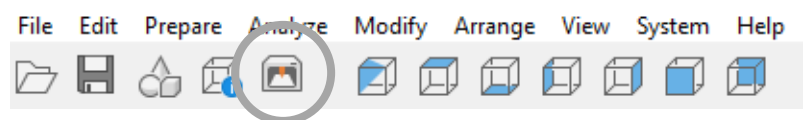
Step 1 My Machines

In order to position a print job in Netfabb, you need to choose your machine workspace (machine class) first.

1. Open Netfabb.
2. The machine overview “My Machines” will be opened automatically and already set up machines will be displayed. If you are using Netfabb for the first time, the machine overview will be empty, no machines will be displayed.



If “My Machines” will not be opened automatically, you can open the machine overview manually: Click on the button “My Machines” in the top left corner (see below). The overview will be opened.

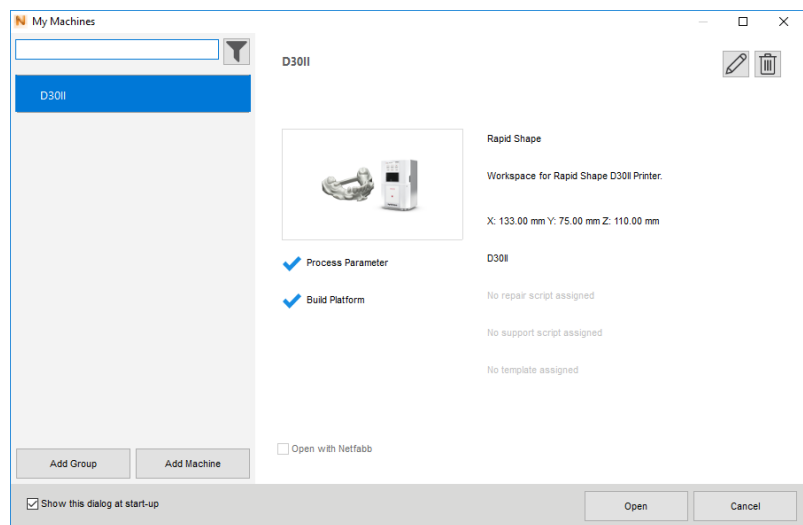
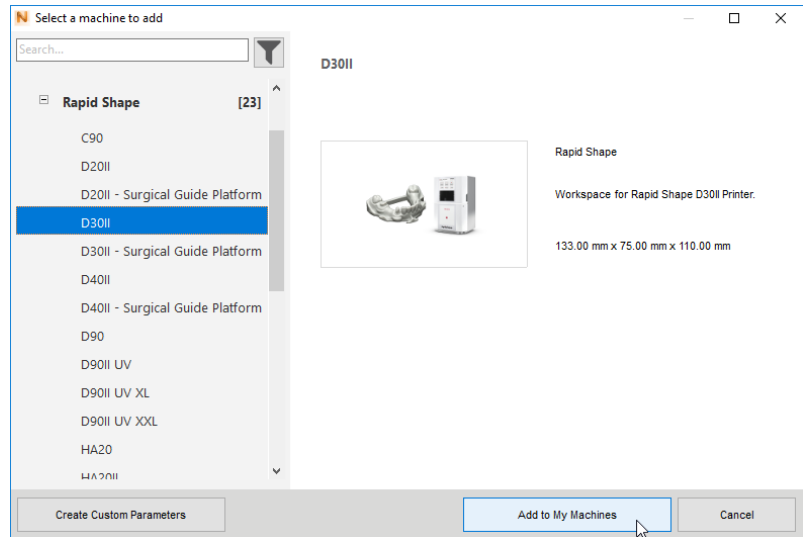
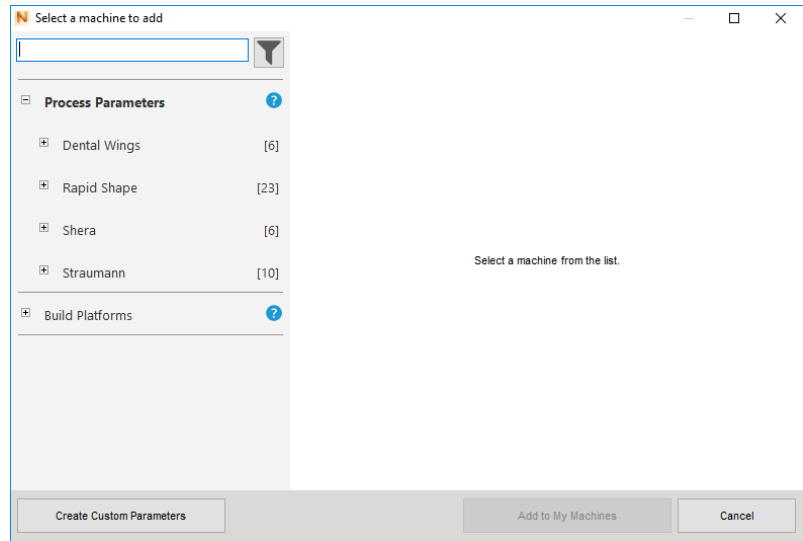


Step 2 Add Machine

1. Click on the button “Add machine”.
2. Select your machine:
Open the manufacturer by clicking on the respective “+”.
Scroll to your machine type. By a single click on the machine type, detail information regarding the machine type will be displayed.
3. Click on the button “Add to My Machines” in order to add your selection to the list or double-click on it. The machine will be added to the list automatically.

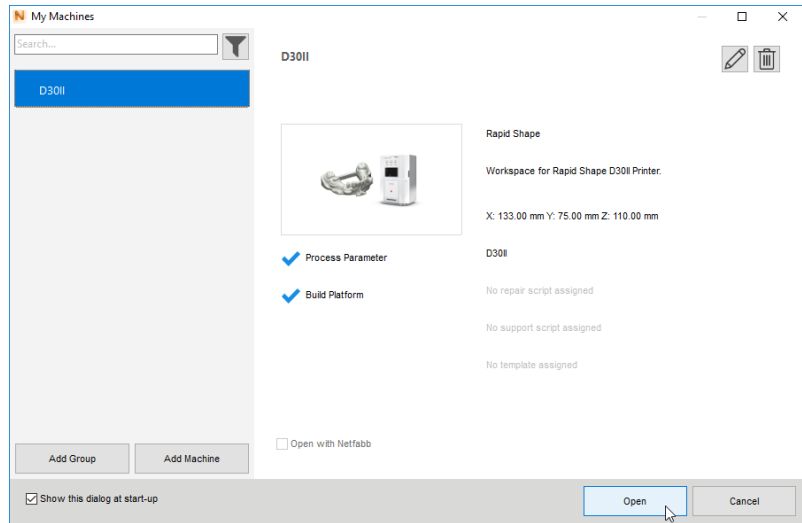
If you are not sure which machine type you are using, please refer to the serial plate at the machine’s back.
You can use the filter options to preselect the manufacturer or to enter your machine type in the search field as well.

Creating a Machine Workspace in Netfabb



Step 3
Load Machine Workspace

1. Click on the button “Open” or double-click on your selection in order to load the machine workspace. Loading may take some seconds.



If the desired machine type is already listed in “My Machines” and the machine overview will not be started automatically during Netfabb’s start-up, you can also load the machine workspace directly per double-click on the machine.

