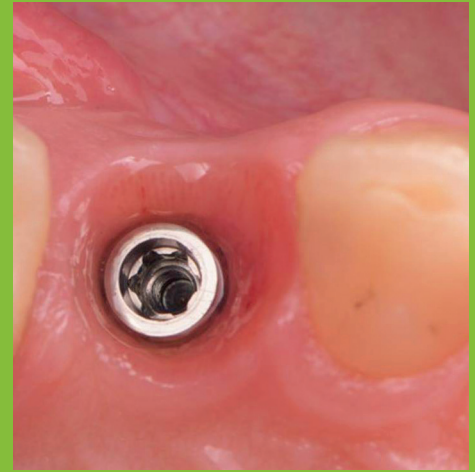
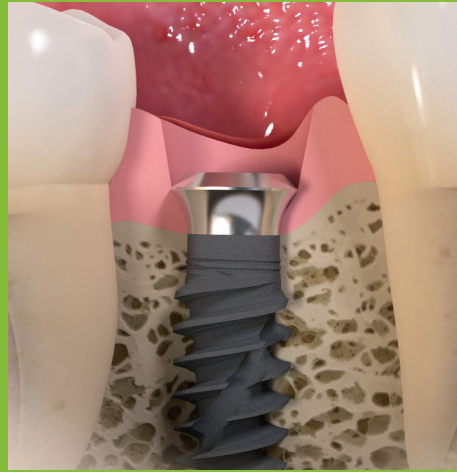


Compared to a BL system, what are the advantages of a TL system, especially in immediate workflows?



SOFT TISSUE MANAGEMENT

- One-stage treatment eliminates the second disturbance thus reducing soft tissue inflammatory response during the healing phase¹
- No microgap at the level of the bone may be preferred for periodontally compromised patients²

BONE MAINTENANCE

- Implants with a machined collar design reduce peri-implantitis rates and risks of marginal bone loss and implant loss³

SIMPLICITY & RESTORABILITY

- One-stage procedure means one less treatment step¹
- The prosthetic platform at the level of the soft tissue enables visibility and accessibility of the connection even in posterior area²

REFERENCES

¹ Vouros ID, Kalpidis CD, Horvath A, Petrie A, Donos N. Systematic assessment of clinical outcomes in bone-level and tissue-level endosseous dental implants. *The International Journal of Oral & Maxillofacial Implants*. 2012;27(6):1359-74. ² Derks J, Schaller D, Hakansson J, Wennstrom JL, Tomasi C, Berglundh T. Effectiveness of Implant Therapy Analyzed in a Swedish Population: Prevalence of Peri-implantitis. *J Dent Res*. 2016 Jan; 95(1):43-9. ³ Hermann JS, Jones AA, Bakaeen LG, Buser D, Schoolfield JD, Cochran DL. Influence of a machined collar on crestal bone changes around titanium implants: a histometric study in the canine mandible. *J Periodontol*. 2011 Sep;82(9):1329-38.