

Straumann®
Emdogain®
More than 2 million
patients treated

Patient information on
the treatment of gum recession

Naturally reverse
gum recession
Straumann® Emdogain®

 **straumann**
simply doing more

Gum recession: why should you care?

The function of gum tissue is to cover and protect the roots of your teeth and underlying jaw bone that anchors them in place. When gums recede, the bone and other tissues that support your tooth's root are also lost. This can compromise your appearance and confidence. The resulting root sensitivity may also make eating and drinking unpleasant or even painful.

It is important to identify and treat recession early. Left unchecked, recession could worsen to a point where the root becomes unprotected and teeth may be compromised and lost.

**RECEDING GUMS EXPOSE
THE TOOTH ROOT AND
COMPROMISE THE ATTACH-
MENT OF THE TOOTH TO
THE JAW BONE.**





Emdogain®:

The gentle solution

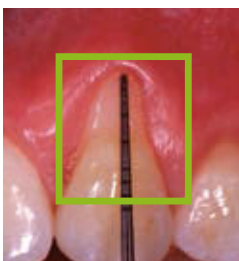
- Straumann® Emdogain® is a scientifically proven gel containing natural proteins that is designed to reverse gum recession.
- Emdogain® is used as part of the minor surgery performed by your dentist to move your gum line back to its original position.

It has been shown that Emdogain® may positively influence:

- the **long-term stability** of your repositioned gums for a long-lasting, beautiful smile
- **your wellbeing after the surgery** thanks to its ability to naturally **improve the healing** of the surgical site, and reduce pain and discomfort

Ask your dentist for more information.

Example



Before treatment
5mm recession defect



8 months after treatment with Straumann® Emdogain®
Root completely covered

Clinical pictures by courtesy of Prof. G. Zucchelli, Bologna (Italy)

WORLDWIDE LEADER, WORLDWIDE TRUST

No matter where life takes you, dentists using Straumann products are nearby.

Visit www.straumann.com/patients to find out more about products and solutions by Straumann and ask your dentist.

{This is a note for the Straumann subsidiary:}
Please check with your printing house if this area can or should be coated with a special “smear-free” finish.

Founded in 1954 and headquartered in Basel, Switzerland, Straumann is a pioneer and global leader in implant dentistry and oral tissue regeneration. In collaboration with leading clinics, research institutes and universities, Straumann researches, develops and manufactures dental implants, instruments, prosthetic components and biomaterials for use in tooth preservation/replacement and restoration procedures.

International Headquarters

Institut Straumann AG

Peter Merian-Weg 12

CH-4002 Basel, Switzerland

Phone +41 (0)61 965 11 11

Fax +41 (0)61 965 11 01

www.straumann.com

© Institut Straumann AG, 2015. All rights reserved.

Straumann® and/or other trademarks and logos from Straumann® mentioned herein are the trademarks or registered trademarks of Straumann Holding AG and/or its affiliates.