



Straumann® Variobase® C

Variobase®
for CEREC® becomes
Variobase® C
NOW available in
Sirona software



More than a Ti-base.

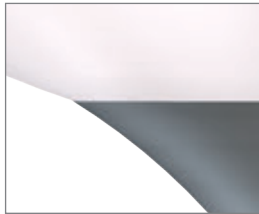
Your trusted link between
implant and restoration.



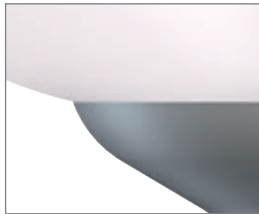
More than owning the whole value chain. The original Ti-base for your chair-side workflow.

The chair-side workflow for implant-borne prosthetics lets you restore your implant cases in a remarkably quick, efficient and cost-effective way.

Thanks to our cooperation with Sirona, Straumann® Variobase® C is now available in the Sirona software. With this option you can fully use the benefits of the chair-side implant workflow, plus you get the original Straumann® implant-abutment connection and a harmonized emergence profile for Bone Level Implant platforms.



Concave collar design of the Variobase® C for Straumann® Bone Level Implants.



Convex collar design for a third-party Ti-base for CEREC® that is claimed to be compatible with Straumann® Bone Level Implants.

ABUTMENT DESIGN MAKES THE DIFFERENCE FOR YOUR PATIENT

Our improved Bone Level NC and RC Variobase® C design provides an optimized emergence profile, intended to support the best possible esthetic outcome of your restoration. Additionally your patients can benefit from an easier cleaning procedure due to the concave collar design.

- NC and RC Bone Level Variobase® C
 - Increased gingiva height of 1 mm
 - Concave collar design
- NC Bone Level Variobase® C
 - Reduced platform diameter from Ø 4.5 down to Ø 3.8 mm



THE ORIGINAL IMPLANT-ABUTMENT CONNECTION

Rely on the perfect design harmony between Straumann implants and their corresponding prosthetic components. Benefit from the Straumann® original connection for:

- Perfectly matching components
- Reliability through proven long-term clinical evidence
- Excellent service and support
- 10-year Straumann® Guarantee*

* For applicable terms and conditions of the Straumann® Guarantee (including the Guarantee territory), please refer to the Straumann® Guarantee brochure (152.360/en)

YOUR WAY TO RESTORE YOUR STRAUMANN IMPLANTS WITH THE STRAUMANN® VARIOBASE® C

Step 1 – Ordering



Variobase® C is compatible with the Sirona Scanbody, the Sirona ScanPost and the material blocks with pre-fabricated screw channel.

Please select the respective parts as shown in the table below:

Variobase® C	Sirona Scanbody size	Sirona ScanPost	Material block screw-hole size
 RC, GH 1mm 022.0044	L	S BL 4.1 L	L
 NC, GH 1mm 022.0043			
 NNC 022.0018	S	Not available	S
 RN 022.0019	L	SSO 4.8 L	L
 WN 022.0020			



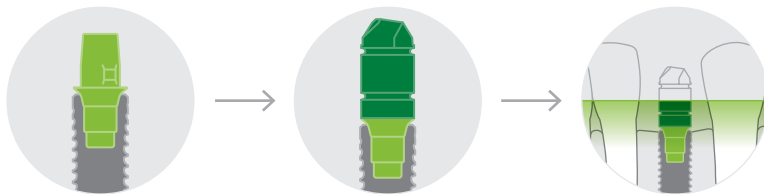
* Please use Scanbody size L when using Sirona ScanPost for scanning.



- Order Variobase® C through your preferred Straumann sales channel
- Order the Sirona Scanbody and ScanPost through Sirona's distribution network
- Order the material block with pre-fabricated screw channel through the material manufacturer distribution network

Please note: The older versions of the Variobase® for CEREC RC (022.0024) and NC (022.0025) are not compatible with their successors Variobase® C RC GH 1mm (022.0044) and NC GH 1mm (022.0043) due to different product design parameters.

Step 2 – Intra-oral scanning



Insert Variobase® C
or Sirona ScanPost on
the implant

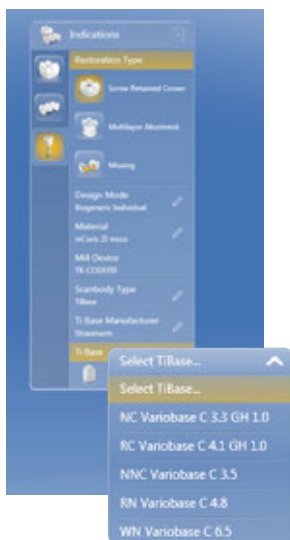
Place Sirona Scanbody
on Variobase® C or on
Sirona ScanPost

Perform intra-oral scan



Step 3 – Designing and milling

Use your Sirona software to select the original Straumann® Variobase® C.



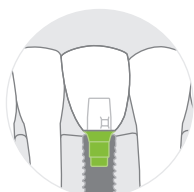
- Select Variobase® C from the implant library of the CAD/CAM system to design the restoration
- Mill the restoration

Sirona CEREC® software selection mask

Variobase® C material packs are available for following Sirona software offerings. Download the Variobase® C material pack from the Sirona website.

Software	Version	Availability
CEREC®	4.3 or higher	Now available
CEREC® Premium	4.4 or higher	Summer 2016
In-Lab	15.1 or higher	Summer 2016

Step 4 – Finalization and insertion



- Fit check the restoration intra-orally on the Variobase® C
- Finish the restoration using standard procedures
- Cement* the restoration on the Variobase® C
- Final insertion into patient's mouth

*For appropriate cementation please see Instructions for Use available on ifu.straumann.com





International Headquarters

Institut Straumann AG

Peter Merian-Weg 12

CH-4002 Basel, Switzerland

Phone +41 (0)61 965 11 11

Fax +41 (0)61 965 11 01

www.straumann.com

CEREC® and ScanPost® are registered trademarks of Sirona Dental Systems, Inc., USA.

© Institut Straumann AG, 2016. All rights reserved.

Straumann® and/or other trademarks and logos from Straumann® mentioned herein are the trademarks or registered trademarks of Straumann Holding AG and/or its affiliates.