



Biomaterials@Straumann®
Because one option is not enough.

botiss collprotect® membrane

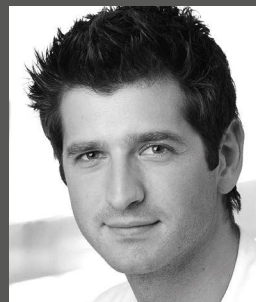
NATIVE COLLAGEN MEMBRANE



collprotect® membrane

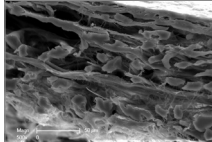
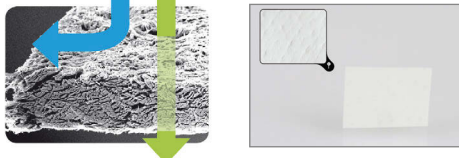
The collprotect® membrane is a native collagen membrane made of porcine dermis. Its multi-step cleaning process ensures the removal of all antigenic and non-collagenous components while preserving its natural collagen structure.

«*In my clinical experience, the collprotect® membrane is a good membrane for smaller augmentations and coverage of autogenous bone grafts. My animal studies have shown that the membrane supports the early phases of bone formation by selective blood vessel ingrowth but also provides a reliable barrier function*».



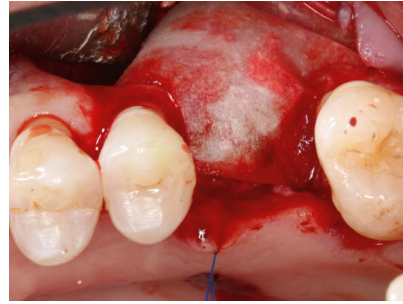
Head of Department,
Oral and Maxillofacial
Plastic Surgery, Johanniter
Hospital Bethesda
Mönchengladbach/Germany

FEATURES AND BENEFITS

| | |
|--|--|
| <p>Native 3D collagen structure preserved during the production process</p> | <p>Rough, 3-dimensional collagen network allows for quick integration into the surrounding tissue.</p>  |
| <p>Fast angiogenesis due to inherent open pores of the native porcine skin</p> | <p>Facilitates vascularization of the defect area, while the membrane maintains a barrier against soft tissue ingrowth.</p>  |
| <p>Intermediate barrier function</p> | <p>Maintaining the necessary barrier function for most indications.</p> |
| <p>Easy application and handling</p> | <p>Can be cut to shape and size in dry or wet conditions. Does not stick to itself. Can be easily repositioned, if needed. Exceptional adaptability to surface contour after rehydration.</p> |

PROPERTIES

| Attribute | Description |
|---------------------|---|
| Origin | Porcine dermis |
| Composition | Native collagen type I and III |
| Structure | Natural 3D collagen structure, rough and porous |
| Thickness | ~ 0.4 mm |
| Fixation | Not required due to good surface adaptation, but possible (pinning, suturing) |
| Degradation time | Intermediate barrier function |
| Storage temperature | Room temperature (< 24 °C) |
| Shelf life | 5 years |



Courtesy of Dr. Michael Erbshäuser, Mühldorf am Inn/Germany

APPLICATION AND HANDLING

Rehydration

The collprotect® membrane can be applied dry or rehydrated in sterile saline solution or blood from the defect. Especially for lateral augmentations, it is beneficial to place a dry membrane before application of the graft material. After rehydration, the membrane can be folded over the defect and easily repositioned if required.

Fixation

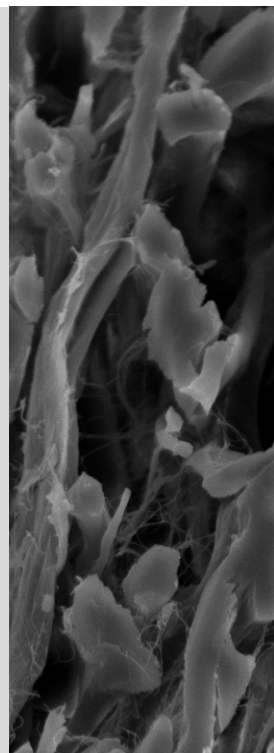
Normally, fixation is not required because of the excellent ability of the collprotect® membrane to adhere to the underlying tissue and adapt to surface contours. However, the collprotect® membrane supports suturing and pinning if required.

Shaping

The membrane can easily be cut with scissors or a scalpel to fit the shape of the defect. It is recommended to cut the membrane in dry state prior to application, although shaping the membrane after rehydration is also possible.

Exposure

In case of dehiscence, the wound usually heals without complications by granulation tissue formation and free contraction. Nevertheless, exposure of the membrane should be avoided since fast bacterial resorption significantly reduces the barrier function of the membrane. In unstable soft tissue situations or if wound dehiscence is expected, it is recommended to cover the collprotect® membrane with a Jason® fleece for protection of the wound healing area.



Recommended for

The collprotect® membrane is recommended for implantology, periodontology, oral and craniomaxillofacial (CMF) surgery:

- Socket and ridge preservation
- Horizontal and vertical ridge augmentation
- Fenestration and dehiscence defects
- Intraosseous and furcation defects
- Sinus lift
- Protection and coverage of minor perforations of the Schneiderian membrane

Available in the following sizes

| Code | Description |
|-----------|---------------------------------------|
| BO-601520 | 15×20 mm botiss collprotect® membrane |
| BO-602030 | 20×30 mm botiss collprotect® membrane |
| BO-603040 | 30×40 mm botiss collprotect® membrane |



For further information please contact your local representative

Distributed by

International Headquarters

Institut Straumann AG
Peter Merian-Weg 12
CH-4002 Basel, Switzerland
Phone +41 (0)61 965 11 11
Fax +41 (0)61 965 11 01
www.straumann.com

Legal manufacturer

botiss biomaterials GmbH

Hauptstr. 28
15806 Zossen, Germany
Tel.: +49 (0)33769 / 88 41 985
Fax: +49 (0)33769 / 88 41 986
www.botiss.com
www.botiss-dental.com
facebook: botissdental

Straumann distributes both its own regenerative products and those of botiss biomaterials GmbH in selected countries under the name "Biomaterials@Straumann®". Please contact your Straumann local partner for product availability and more information.

© Institut Straumann AG, 2017. All rights reserved.

Straumann® and/or other trademarks and logos from Straumann® mentioned herein are the trademarks or registered trademarks of Straumann Holding AG and/or its affiliates. All rights reserved.