

STRAUMANN® ZYGOMATIC IMPLANT SYSTEM

Designed by experts with
the patient in mind.





FROM EXPERTS FOR EXPERTS.

The Straumann® Zygomatic Implant System provides an immediate, graftless, predictable fixed solution for edentulous patients and patients with terminal dentition.^{1,2,4,8,9}

Our unique implant designs and straightforward prosthetic concept provide versatile treatment options with immediate protocols and predictable fixed solutions. The Straumann® Zygomatic Implant System helps you to tailor the solution to your patients' anatomy type and bone deficits.⁷

The Zygomatic Implant System completes the Straumann full-arch portfolio with a premium solution so that you have all the tools to treat full arch indications from one source.



FROM EXPERTS FOR EXPERTS

Bringing experts together to provide a solution you can trust in.

IMMEDIATE LOADING^{1,2,5}

Graftless solution that provides primary stability and allows immediate loading.

ANATOMICALLY BASED DESIGNS

Two designs, ZAGA™ Flat and ZAGA™ Round, with a unique combination of features to respect patients' anatomical structures.⁶

STRAIGHTFORWARD PROSTHETICS³

Prosthetic portfolio with a single implant connection; compatible with Straumann® Full-Arch Solutions.

“ZAGA™ Flat design allows a significantly more conservative osteotomy and better bone sealing while avoiding soft tissue compression.”

Dr. Carlos Aparicio

“The Straumann® Zygomatic Implant System facilitates the treatment of any maxillary condition ... it provides the total solution for immediacy concept.”

Dr. Edmond Bedrossian

DESIGNED TO ADAPT TO PATIENT'S ANATOMY.

Two implant designs, ZAGA™ Flat and ZAGA™ Round to suit the patient's anatomy and consider bone deficit.



THE FLATTENED SHAFT DESIGN

Suits the patient's anatomy to consider bone deficit respecting soft-tissue vascularity

1 ROUND AND SMOOTH APICAL END

Protects soft tissue

2 TAPERED DESIGN

- Maximized zygomatic anchorage
- Thread pitch optimized to 0.8 mm for controlled and fast implant insertion

3 REDUCED DISTAL DIAMETER (3.4 MM)

Designed for a less invasive osteotomy and implant placement in patients with smaller anatomy

4 MACHINED SMOOTH SHAFT

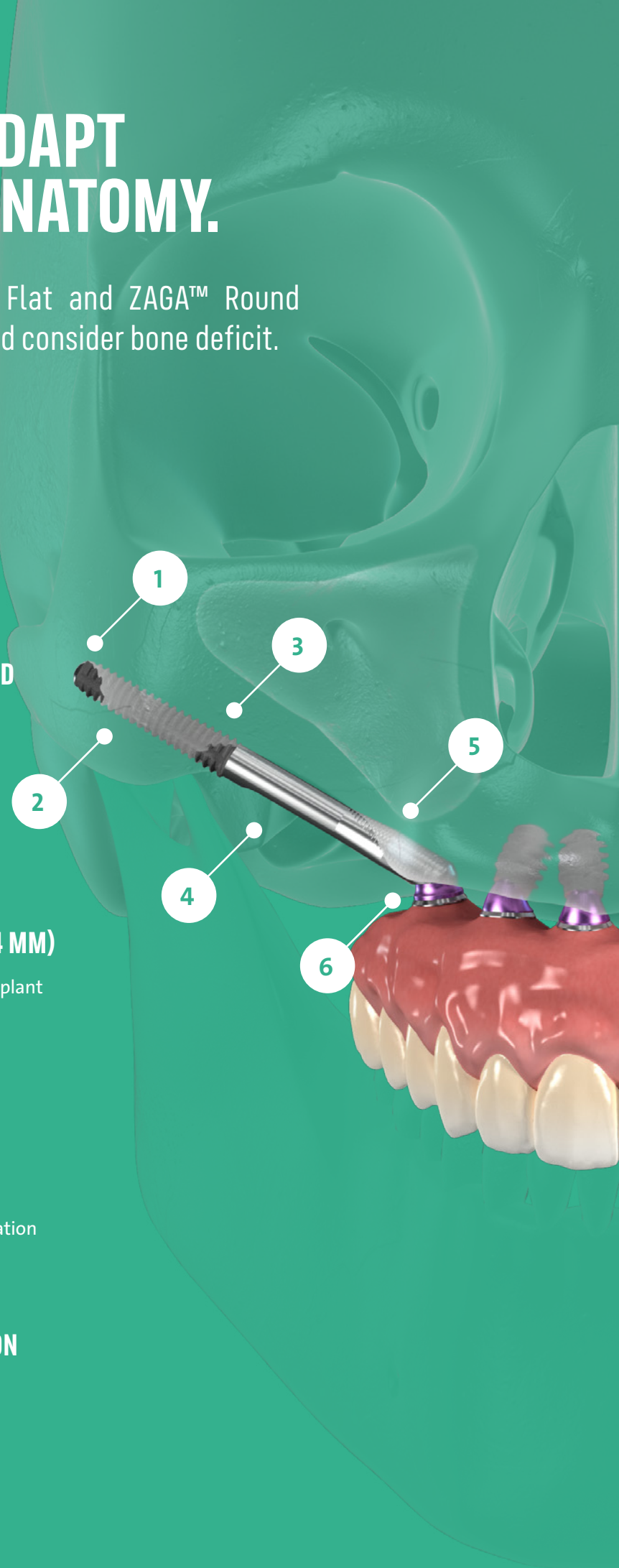
Provides less friction with soft tissue

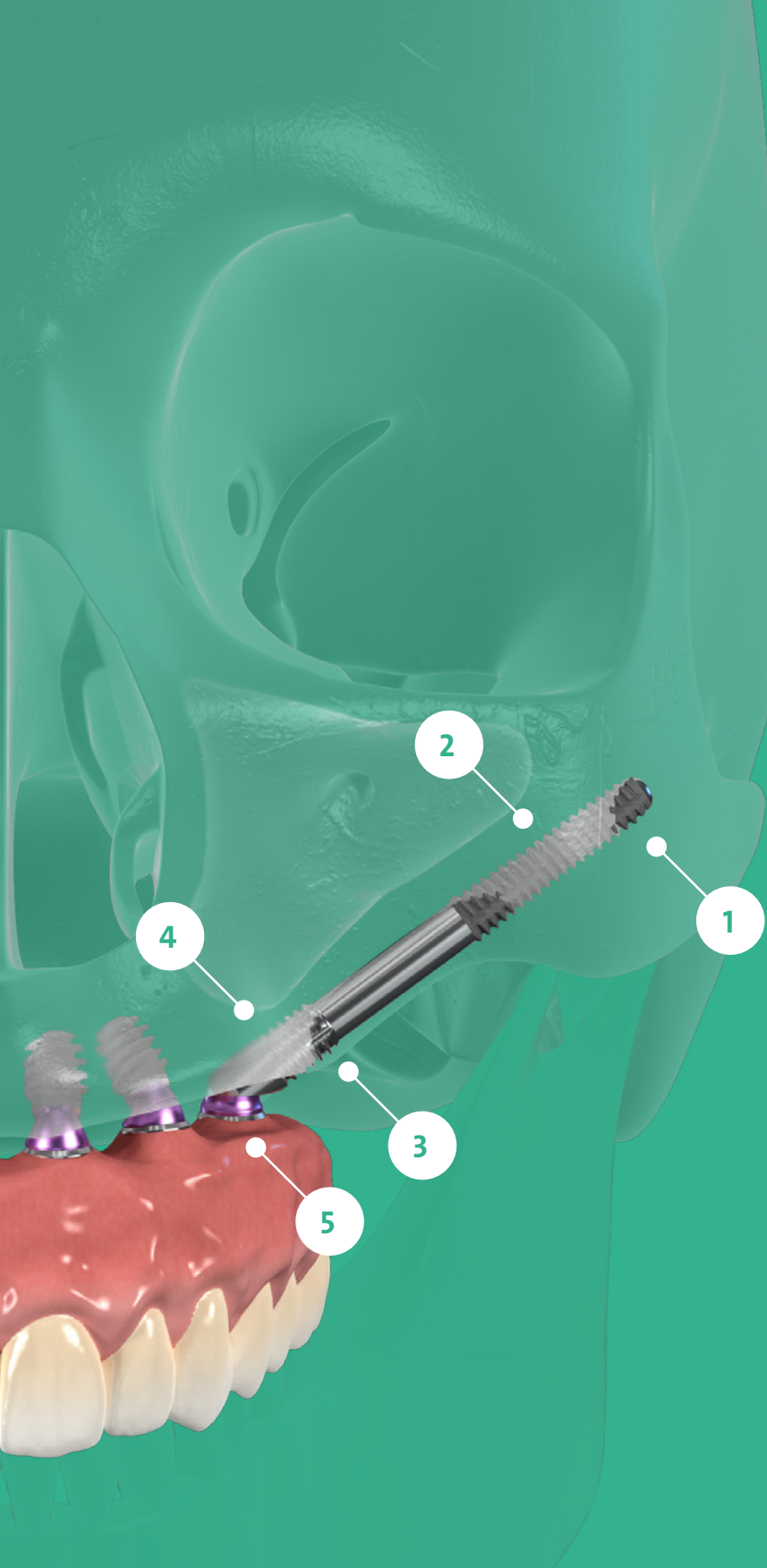
5 CORONAL MICRO THREAD

- Allows bone preservation and osseointegration with bone apposition
- Contributes to sinus sealing

6 SINGLE PROSTHETIC CONNECTION

Optimized and simplified prosthetic portfolio





THE MACHINED SMOOTH ROUND SHAFT DESIGN

Provides less friction with soft tissue

1 ROUND AND SMOOTH APICAL END

Protects soft tissue

2 SANDBLASTED ROUGH SURFACES

Optimizes osseointegration in the zygomatic bone

3 CORONAL THREAD

Enables bone anchorage and osseointegration at the coronal level

4 CORONAL MICRO THREAD

- Allows bone preservation and osseointegration with bone apposition
- Contributes to sinus sealing

5 SINGLE PROSTHETIC CONNECTION

Optimized and simplified prosthetic portfolio

“The two implant designs with differentiated surfaces is a wise solution that can be applied by any zygomatic surgeon and can be adapted to different patient's anatomies.”

Dr. Sepehr Zarrine

STRAIGHTFORWARD PROSTHETIC CONCEPT.

The Straumann® Zygomatic implants are compatible with our Bone Level prosthetic portfolio for fixed overdentures including coping and impression material.

ZYGOMATIC SCREW-RETAINED ABUTMENT ZAGA

The dedicated Zygomatic Screw-retained abutment ensures compatibility with the BLX and BLT implants and prosthetics and simplifies your workflow.

TECHNICAL SPECIFICATIONS

Titanium coping

Zygomatic Screw-retained Abutment

ZAGA™ Round

ZAGA™ Flat

55° platform with **standard external hex** connection.

The 55° platform accommodates a higher angle for the restorative position.

Compatible with Straumann® SCS screwdriver

Ø4.6 mm

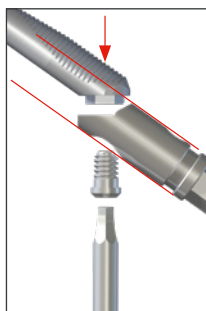
Ø4.6

GH

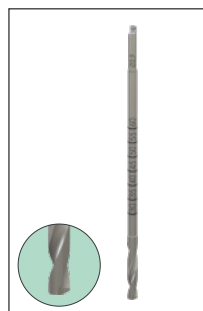
| Gingiva height (GH) | | | |
|---------------------|-----|-----|-----|
| 1.5 | 2.5 | 3.5 | 4.5 |
| ✓ | ✓ | ✓ | ✓ |

All dimensions are in mm

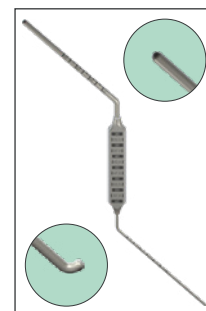
INSTRUMENTS FOR AN OPTIMAL PLACEMENT



Fixture mount with a slim design for an optimal implant placement with more flexibility.



Multi-use drill with high cutting performance.



Two-side Z depth gauge with a hook and a tip-end.



"... I have a much fuller social life now: I am no longer afraid of my teeth moving, or my dentures falling out, when I play sports, laugh, speak or sing ..."

Patient, 52 years old

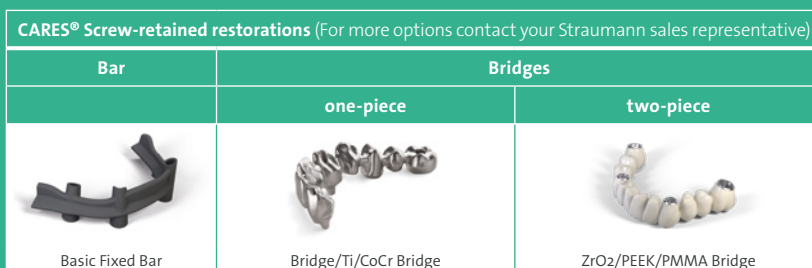
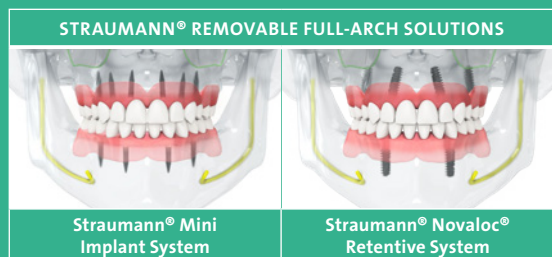


TREATMENT PLANNING WITH CODIAGNOSTIX®

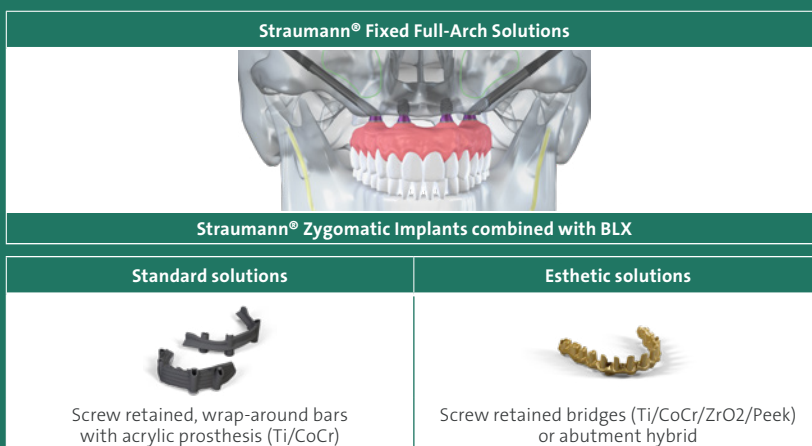
Integration of Straumann® Zygomatic Implant System components data in our digital implant placement software coDiagnostiX® enables you to plan full-arch cases precisely and easily.

The tool offers numerous measurements and planning functions, including automatic nerve-canal detection, various distance monitoring functions and the design of surgical and bone resection guides.

STRAUMANN® FULL-ARCH SOLUTIONS



Straumann® Zygomatic Implant System is part of the Straumann® Full-Arch Fixed Solutions, representing the last and one of the most advanced options for the rehabilitation of edentulous patients.



REFERENCES

- 1 Tuminelli FJ, Walter LR, Neugarten J, Bedrossian E. Immediate loading of zygomatic implants: A systematic review of implant survival, prosthesis survival and potential complications. Eur J Oral Implantol. 2017;10 Suppl 1:79-87.
- 2 Fatigue Testing Report – ZAGA Implant System.
- 3 Boyes-Varley JG, Howes DG, Lownie JF, Blackbeard GA. Surgical Modifications to the Branemark Zygomaticus Protocol in the treatment of the severely resorbed Maxilla: A Clinical Report. Int. J Oral Maxillofac. Implants 2003;18:232–237.
- 4 Wang F, Monje A, Lin GH, Wu Y, Monje F, Wang HL, Davó R. Reliability of four zygomatic implantsupported prostheses for the rehabilitation of the atrophic maxilla: a systematic review. Int J Oral Maxillofac Implants. 2015 Mar-Apr;30(2):293-8.
- 5 Jung RE, Al-Nawas B, Araujo M, Avila-Ortiz G, Barter S, Brodala N, Chappuis V, Chen B, De Souza A, Almeida RF, Fickl S, Finelle G, Ganeles J, Gholami H, Hammerle C, Jensen S, Jokstad A, Katsuyama H, Kleinheinz J, Kunavisarut C, Mardas N, Monje A, Papaspyridakos P, Payer M, Schiegnitz E, Smeets R, Stefanini M, Ten Bruggenkate C, Vazouras K, Weber HP, Weingart D, Windisch P. Group 1 ITI Consensus Report: The influence of implant length and design and medications on clinical and patient-reported outcomes - Clin Oral Implants Res. 2018 Oct;29 Suppl 16:69-77.
- 6 Aparicio C, López-Piriz R, Albrektsson T. ORIS Criteria of Success for the Zygoma-Related Rehabilitation: The (Revisited) Zygoma Success Code. Int J Oral Maxillofac Implants 2020;35:366–378.
- 7 Aparicio C, Balshi T J, Chow J, David L, Davo R, McLellan G, Nicolopoulos C, Peñarrocha M, Píkos M A, Polido W, Zarrinkelk H, Malevez C. The Zygomatic Osteotomy Revisited. ZAGA Consensual Guide for Zygomatic Surgery Decision Taking. Int J Oral Maxillofac Implants 2020 (accepted).
- 8 Bedrossian E. , Bo Rangert Immediate Function with the Zygoma implant: A Graftless Solution for the patient with Mild to advanced Atrophy of the Maxilla Int J Oral Maxillofac Implants 2006;21:937-942.
- 9 Bedrossian, E. Rehabilitation of the Edentulous Maxilla with the Zygoma ; A 7-year Prospective Concept Int J Oral Maxillofac Implants 2010, 25:1213-1221.

International Headquarters

Institut Straumann AG
 Peter Merian-Weg 12
 CH-4002 Basel, Switzerland
 Phone +41 (0)61 965 11 11
 Fax +41 (0)61 965 11 01
 www.straumann.com