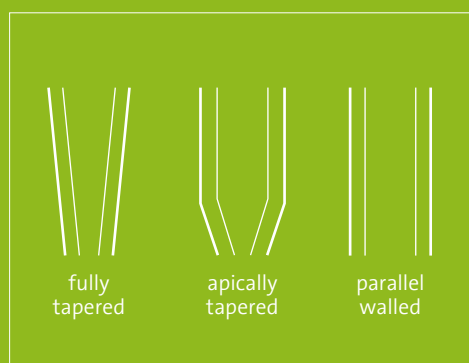


Compared to a TL system, what are the advantages of a TLX system to optimize immediate workflows?

REDUCED INVASIVENESS



Less metal means more bone (smaller osteotomy is needed). The small TorcFit™ connection size allows reduced outer implant dimensions.

OPTIMIZED FOR IMMEDIATE PROTOCOLS



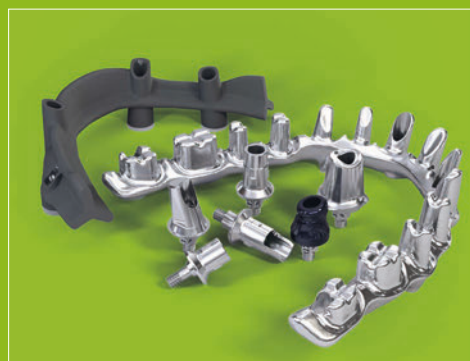
The endosteal design is optimized for primary stability. The prosthetic portfolio is designed to meet the needs of all treatment protocols and is perfected for immediate protocols.

EXPANDED NARROW PLATFORM OPTIONS



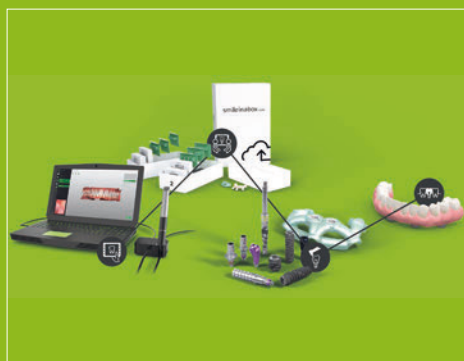
TLX offers NT in Ø3.75 mm and Ø4.5 mm implants suitable for all indications including full arch and molar rehabilitation.

SIMPLE AND COMPREHENSIVE PROSTHETIC SOLUTION



Prosthetic engagement at soft tissue level is simple and reduces cementation challenges. The system is designed to meet a wide range of prosthetic needs.

DIGITAL INTEGRATION



TLX is fully integrated in digital workflows from implant planning to the final CAD/CAM prosthetics.

NEW STATE OF THE ART CONNECTION



TorcFit™ connection is the connection of future Straumann® implant systems. It is designed to optimize the restorative workflow, especially in immediate protocols. Proper sealing of the prosthetics on the implant shoulder is supported by 6 precision engagement positions.