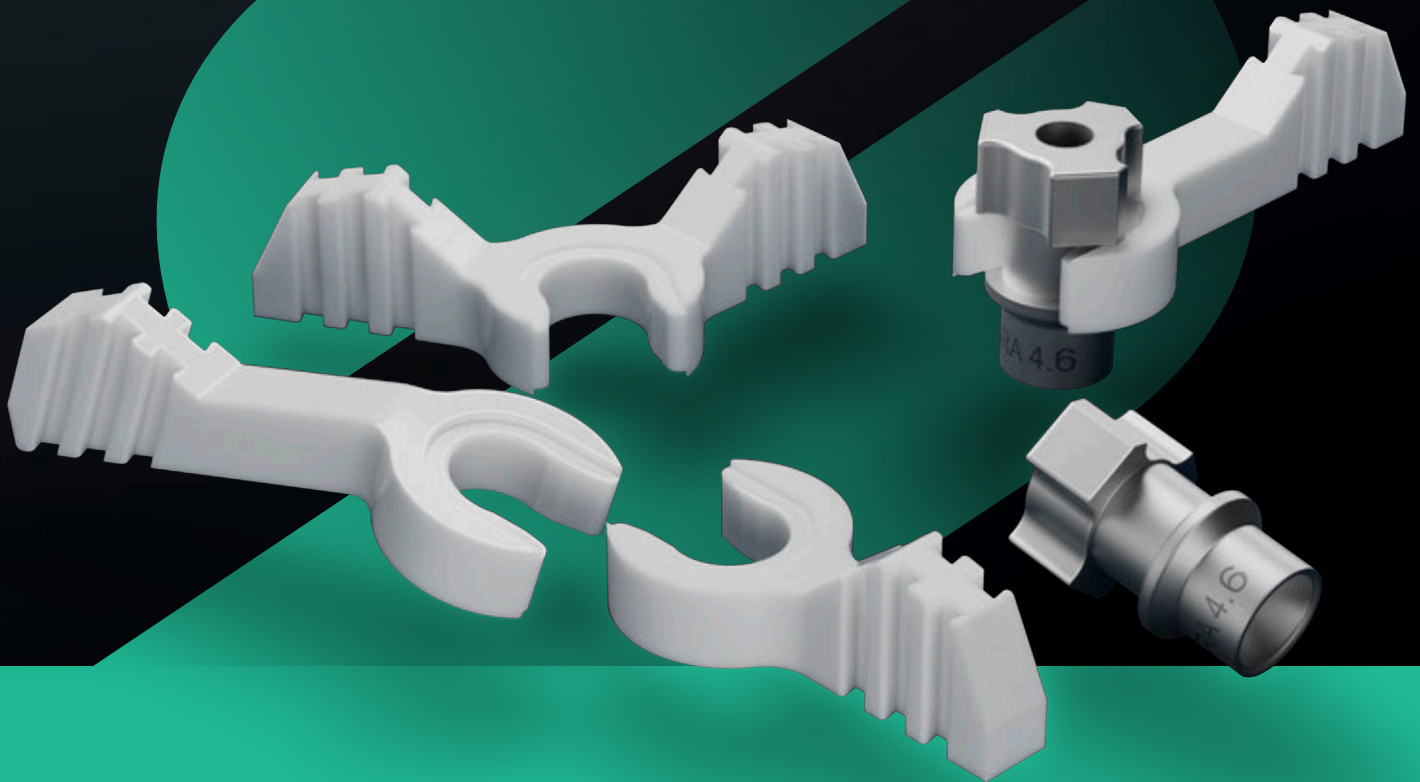


# STRAUMANN EXACT™

A perfect match.



# A LANDMARK IN DIGITAL DENTISTRY

## DIGITAL FULL-ARCH FROM TEMPORARY TO FINAL RESTORATION

Our goal is to increase efficiency and accuracy for faster time to teeth while minimizing capital investments giving access to fixed full-arch treatment.

Seamlessly integrated with Straumann SIRIOS™ and Straumann AXS™ and fully validated with Straumann UN!Q™, Straumann EXACT™ enhances accuracy, efficiency, and flexibility for clinicians and labs, making digital full-arch workflows accessible without the high capital investment of photogrammetry.



**Fig 1:** First, the Straumann EXACT™ scanbody BASEs are screwed to the SRAs. Then LINKS should be selected to create the best fit to the abutment positions and anatomy. This results in a rigid scanning bridge which allows the accurate verification of the abutment position.



No need to create a verification jig or send a physical model.



## **SPEED**

Eliminates the need for labor-intensive steps like creating a verification jig and backpouring a model, enabling a fully digital, temporary to final workflow.



## **ACCURACY**

Physical connections between scanbodies drastically improve IOS accuracy and enhance precision for full-arch scanning, overcoming the limitations of traditional scanbodies.



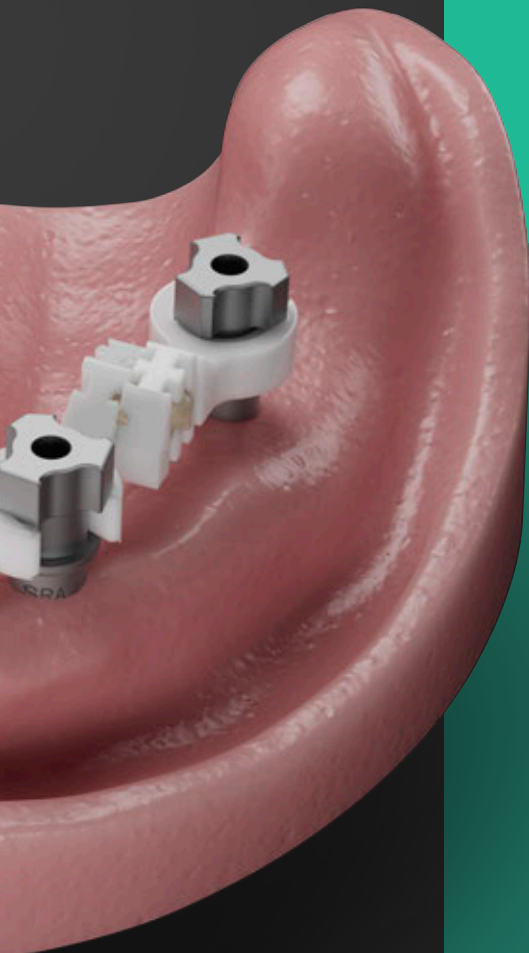
## **COST-EFFECTIVE**

Provides a highly accurate alternative to photogrammetry systems without the prohibitive capital investment.



## **FLEXIBILITY**

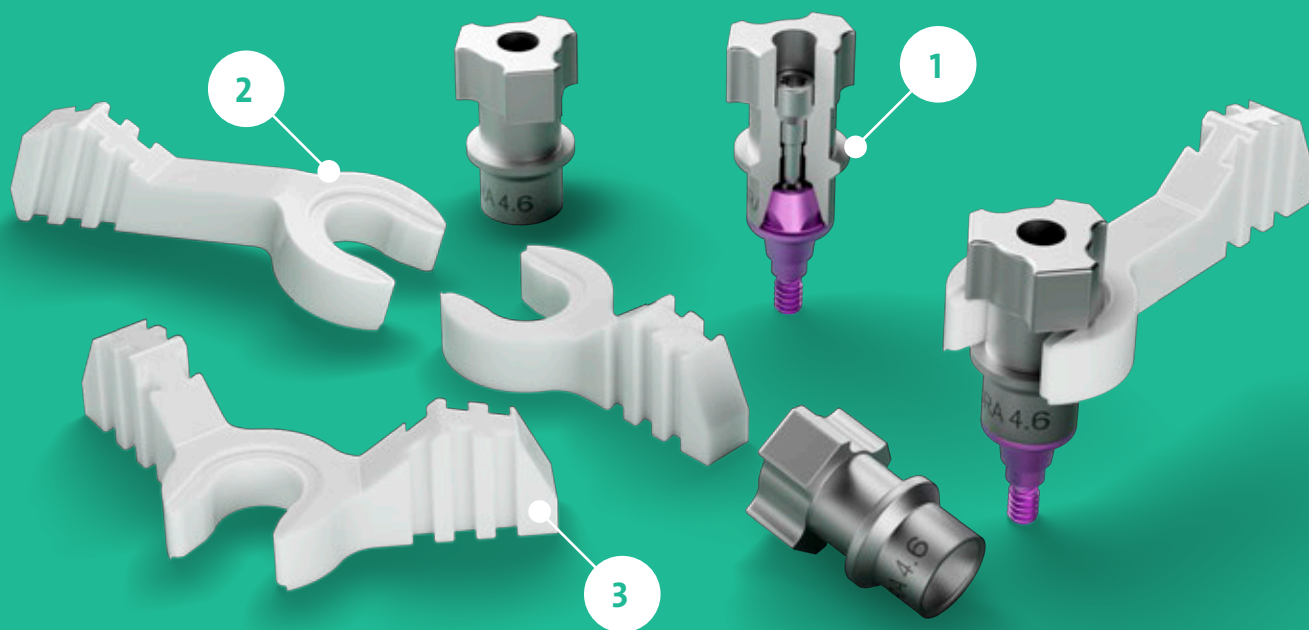
Compatible with Straumann UNIQ™ and supports collaboration with the preferred lab partner, empowering clinicians with greater control and freedom of choice.



Straumann EXACT™ enables a seamless, cost-effective, accurate, fully digital, validated, treatment workflow for full-arch restorations. Traditional scanbodies fall short in accuracy due to insufficient landmarks for precise stitching. By combining 'BASE' scanbodies with connecting 'LINKS', the system enables precise and cost-effective edentulous scanning, while avoiding analog steps.

# DEVELOPED WITH PRECISION AND USABILITY IN MIND

Straumann EXACT™ is the result of in-depth research and development, with over 50 prototypes evaluated across over a 1,000 scans to optimize accuracy and usability.



Product name		Article number	Description
Scanbody/BASE		025.0084	for Straumann® SRA 4.6
LINKS		025.0086V4	Long LINK
		025.0087V4	Short LINK
		025.0088V4	V-Shape LINK
		025.0089V4	Angled LINK

## 1 DESIGNED FOR PRECISION

Non-symmetrical, non-congruent BASE shapes improve scanning accuracy, while a direct seat on the screw-retained abutment ensures tighter tolerances and reliable results. Pre-defined notches minimize vertical movement, helping to reduce scan distortions and maintain accuracy.

## 2 EASE OF USE

The straightforward snap-on design provides tactile and optical feedback, helping to ensure links are securely positioned time after time.

## 3 VERSATILE CLINICAL APPLICATIONS

- **Simultaneous soft tissue capture** streamlines workflows by eliminating the need for an additional scan step
- **Specialized LINK geometry** is designed to perform effectively in mandibular cases, avoiding interference from the tongue
- **Rotatable LINKS** allow for precise bonding positions suited to each case
- **Four LINK geometries** accommodate a range of clinical scenarios, including cases with fully edentulous patients



# SHORTEN YOUR PATH TO A PASSIVE-FITTING PROSTHESIS

## SCAN



### UNLOCK THE FULL POTENTIAL OF YOUR IOS

Patients increasingly expect a seamless, enhanced digital experience. They believe it's important for dentists to use digital technology and prefer digital impressions over traditional methods for greater comfort and convenience.

Our scanbody system, Straumann EXACT™, enables you to use existing IOS for full-arch cases, streamlining your workflow and enhancing your capabilities.

Gain access to an even superior user experience with our Straumann SIRIOS™. With a dedicated and validated workflow, it delivers highly accurate full-arch implant restorations – all within a single scanning case.

## MATCH



### SEAMLESSLY SHARE ACCURATE SCANS WITH YOUR PREFERRED LAB

Send your Straumann EXACT™ scans to the lab partner of your choice, giving you the freedom to work with your trusted provider for final restorations.

With Straumann EXACT™, you can count on precision: achieve accuracy averaging 22 µm, well within the 50 µm threshold supported by clinical evidence for delivering passive-fitting prostheses.

Reduce chair time and number of patient visits for faster time to teeth.





Discover  
Straumann AXS™

## DESIGN



### STRAUMANN UNIQ™

Straumann UNIQ™ provides a comprehensive design proposal, that gives dental labs a head start in the workflow. Importantly, labs always retain the final approval and control of the design, to ensure that every detail aligns with their exacting standards.

By outsourcing the bar to UNIQ, labs save valuable time and resources. With the flexibility to mill the zirconia and apply final touches in-house, labs can deliver personalized, premium restorations that meet the needs of clinicians and patients.

## RESTORE



### STRAUMANN® COREBAR™

Straumann® CoreBar™ restorations:

Precision meets comfort

- **Patient comfort:** lighter than full zirconia for an improved experience
- **Reliable bonding:** larger surface area minimizes the risk of debonding
- **Enhanced support:** superior force distribution compared to traditional copings
- **Streamlined efficiency:** mill zirconia in-lab while the bar is centrally manufactured by Straumann UNIQ™ using the core file
- **Digital workflow ready:** no physical model required

Eliminate the need for an additional visit to verify impressions

“

*Working with your service feels effortless, the flow is very fast and simple. I love the design approval process and the design quality is great.* ”

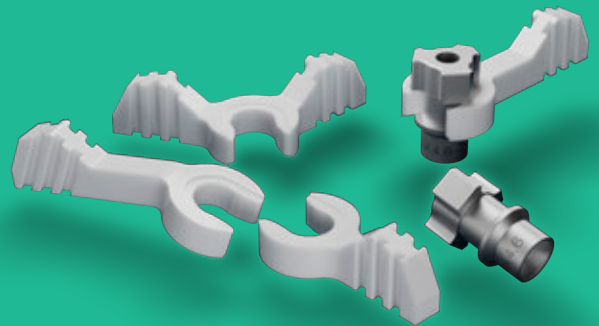
YDL Dental, Texas

# STRAUMANN EXACT™ – A PERFECT MATCH.



Discover  
Straumann EXACT™

- Speed: eliminates the need for labor-intensive steps like creating a verification jig and backpouring a model, enabling a fully digital, end-to-end workflow
- Accuracy: physical connections between scanbodies drastically improve IOS accuracy and enhance precision for full-arch scanning
- Cost-effective: provides a highly accurate alternative to photogrammetry systems without the prohibitive capital investment
- Flexibility: compatible with Straumann UNIQ™ and supports collaboration with the preferred lab partner, empowering clinicians with freedom of choice



491.012/en/A/00 03/25

## International Headquarters

Institut Straumann AG  
Peter Merian-Weg 12  
CH-4002 Basel, Switzerland  
Phone +41 (0)61 965 11 11  
Fax +41 (0)61 965 11 01  
[www.straumann.com](http://www.straumann.com)

© Institut Straumann AG, 2025. All rights reserved.  
Straumann® and/or other trademarks and logos from Straumann® mentioned herein are the trademarks or registered trademarks of Straumann Holding AG and/or its affiliates.

