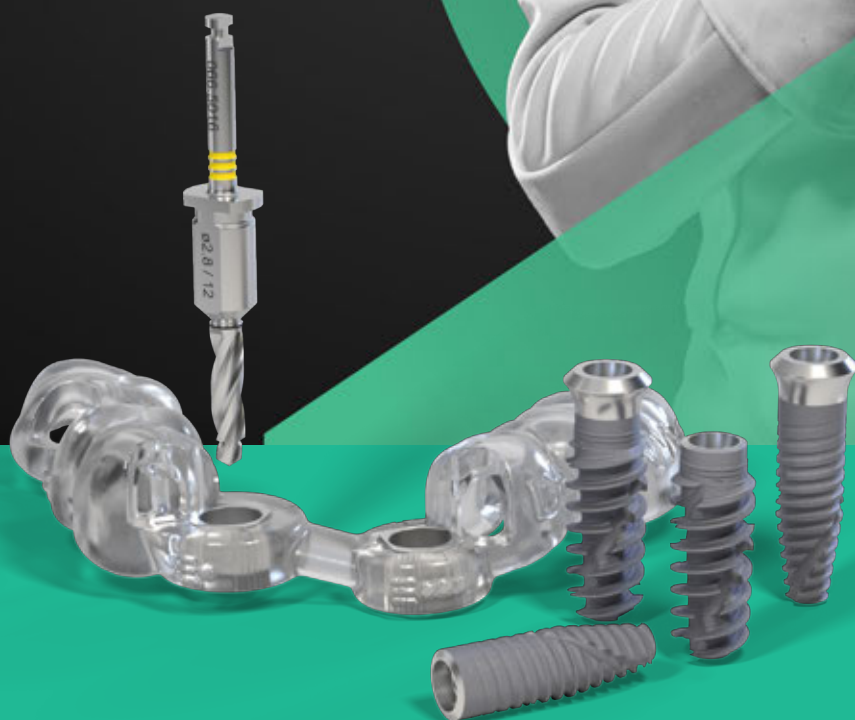


# STRAUMANN iGUIDE™

Confidence through guidance.



# CONFIDENCE THROUGH GUIDANCE

Straumann iGuide™ is the guided system for the Straumann iEXCEL™ implant line.

Bring your prosthetic-driven plans to life with accuracy and confidence. Streamline your workflow with a straightforward, intuitive system—and integrate seamlessly with Straumann iEXCEL™ for true versatility, simplicity, and connected dentistry. Because when accuracy meets confidence, your patients benefit first.





## WHY GUIDED?

Static fully guided surgery helps to translate virtual implant planning to clinical execution. Compared to freehand surgery, it demonstrates superior accuracy, with minimal deviations in implant positioning. It also enhances the reproducibility and predictability of implant placement outcomes, minimizing variability across different operators and cases.<sup>1-7</sup>

Depending on your level of expertise, you can accelerate your learning, and as a seasoned surgeon, use it as a boost.

# HOW DOES IT WORK?

## SCAN



IOS



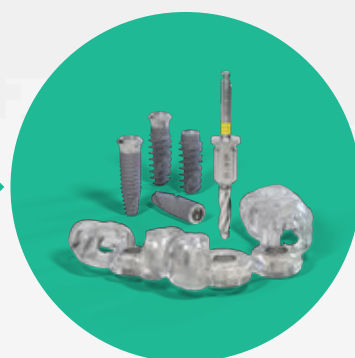
CBCT

## PLAN



**CODIAGNOSTIX<sup>®\*\*</sup>  
OR SMILE IN A BOX<sup>®\*</sup>**

## PERFORM



**STRAUMANN iEXCEL<sup>™</sup>  
STRAUMANN iGUIDE<sup>™</sup>**

\* Check Smile in a Box<sup>®</sup> availability with your local partner

\*\* Straumann iGuide<sup>™</sup> is also compatible with select 3rd party implant planning software options



## SEAMLESS INTEGRATION WITH STRAUMANN IEXCEL™

- Clinical versatility: Four implant designs. One system.
- Simplicity: One TorcFit™ connection for all four implant designs
- Connected dentistry: Full integration into the digital ecosystem

## STRAIGHTFORWARD AND INTUITIVE SYSTEM

- One hand surgery
- Sequential drilling and double guidance of tip and sleeve
- Drill sequence with pictograms and color-coded workflows

## PROSTHETIC-DRIVEN CONFIDENCE

- Digital workflow designed to reduce the risk of harm for the patient<sup>15</sup>
- Digital pre-operative planning executed guided increases predictability<sup>2-4\*</sup>



\* Compared to freehand surgery



# STRAIGHTFORWARD AND INTUITIVE SYSTEM

Drilling sequence with pictograms and color-coded workflows.

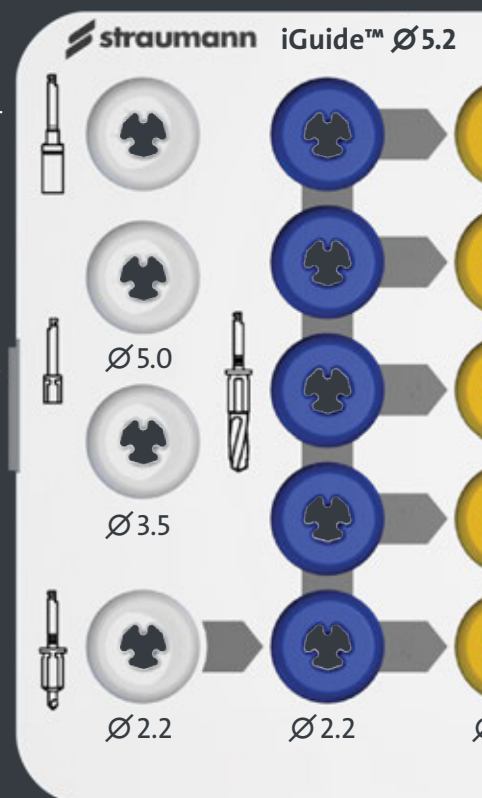


iGuide™  
Milling Cutter  
066.5061  
066.5005

	Fully tapered (X-Design)		Apically tapered (C-Design)	
	BLX	TLX	BLC	TLC
Ø3.3 mm			✓	✓
Ø3.5 mm	✓			
Ø3.75 mm	✓	✓	✓	✓
Ø4.0 mm	✓			
Ø4.5 mm	✓	✓	✓	✓
Ø5.0 mm	✓			
Lengths	6–14 mm	6–14 mm	6–14 mm	6–14 mm
Sleeve	Ø5.2 mm	Ø5.2 mm	Ø5.2 mm	Ø5.2 mm



iGuide™ Mucosa  
Punch  
066.5004



iGuide™  
Drill Ø2.2, L4  
066.5062



iGuide™  
Drill  
066.  
066.  
066.  
066.  
066.



iGuide™  
Drill Ø2.8  
066.5013  
066.5014  
066.5015  
066.5016  
066.5017



iGuide™  
Drill Ø3.5  
066.5027  
066.5028  
066.5029  
066.5030  
066.5031



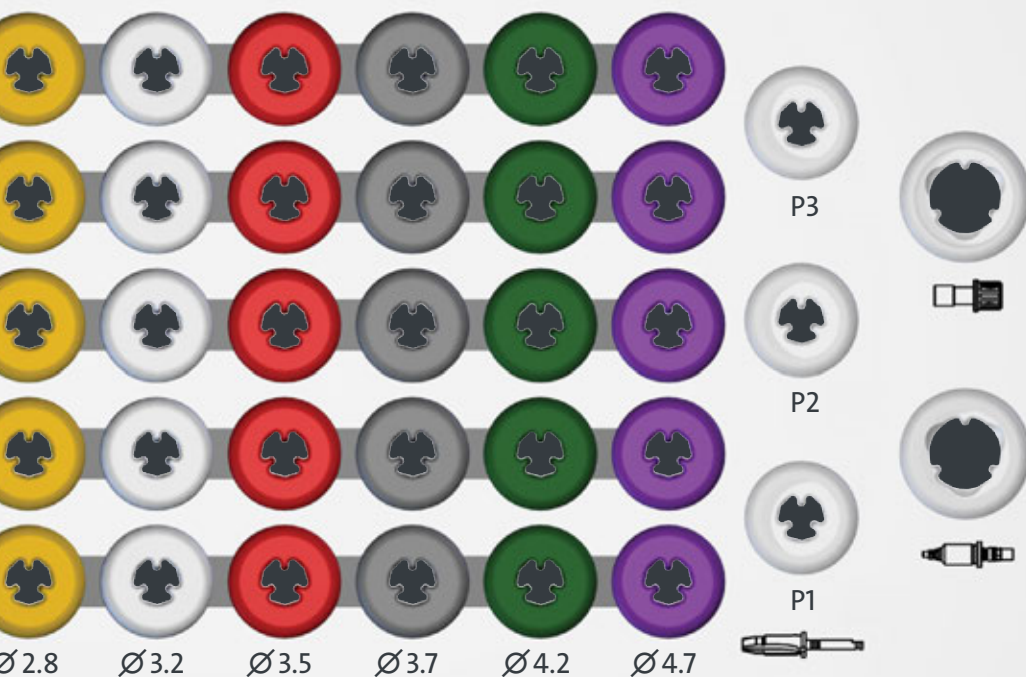
iGuide™  
Drill Ø4.2  
066.5041  
066.5042  
066.5043  
066.5044  
066.5045



iGuide™  
Prof. Drill  
066.5056  
066.5057  
066.5058



Adapter for  
Ratchet  
046.460



Ø2.8    Ø3.2    Ø3.5    Ø3.7    Ø4.2    Ø4.7



iGuide™  
Implant  
Driver  
066.5058



iGuide™  
Drill Ø3.2  
066.5020  
066.5021  
066.5022  
066.5023  
066.5024



iGuide™  
Drill Ø3.7  
066.5034  
066.5035  
066.5036  
066.5037  
066.5038



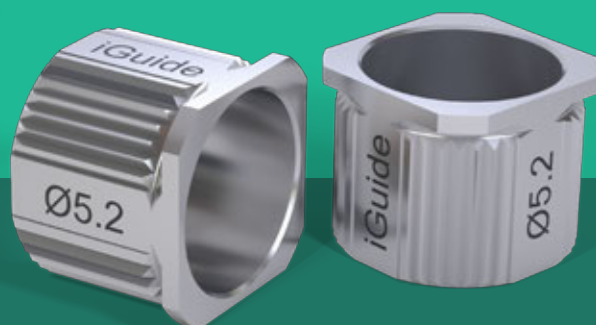
iGuide™  
Drill Ø4.7  
066.5048  
066.5049  
066.5050  
066.5051  
066.5052

de™  
Ø2.2  
5006  
5007  
5008  
5009  
5010



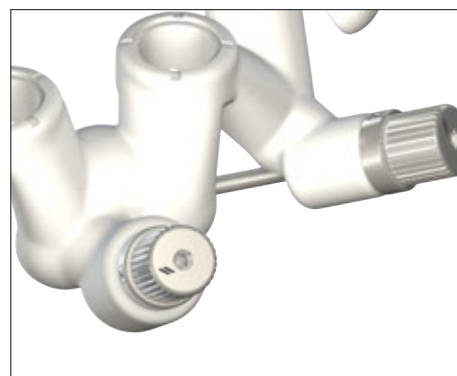
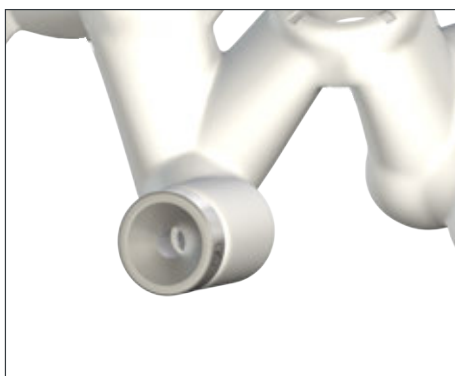
## ONE-HAND SURGERY

Instruments without handles allow for one-hand surgery



## THE SLEEVES

- New designed sleeve for immediate recognition
- Dedicated diameter for Straumann iGuide™: Ø5.2 mm
- One sleeve height H5
- Dedicated sleeve with screw-retained interface for improved stability of the fixation pin





## SEQUENTIAL DRILLING AND DOUBLE GUIDANCE OF TIP AND SLEEVE



Keyless solution with inbuilt stop for high performance and a seamless user experience.

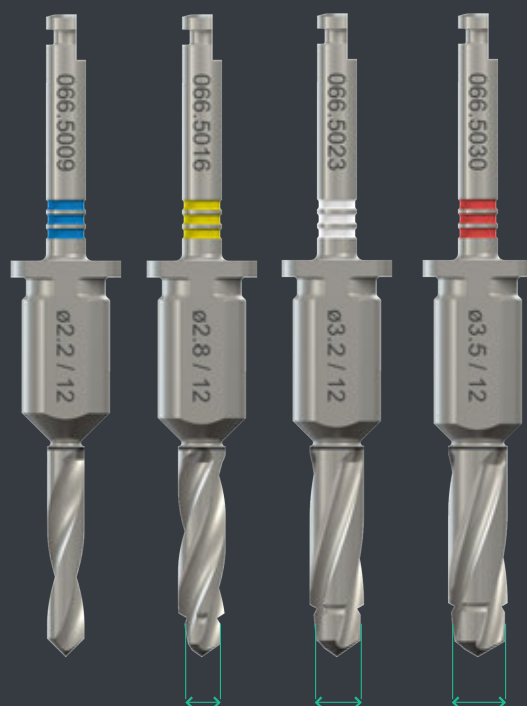
The tip of the drill follows the diameter of the previous drill, allowing it to engage the existing osteotomy. This ensures guidance even in deep preparation.



Color coding and new laser marking for an easy recognition of the drills.



Guided from the start thanks to the 4 mm Pre-Pilot drill



Ø2.2mm Ø2.8mm Ø3.2mm

## FINAL STEPS



Shape the coronal part of your osteotomy with the profile drill.



New screw-retained implant driver for a strong connection with the implant.



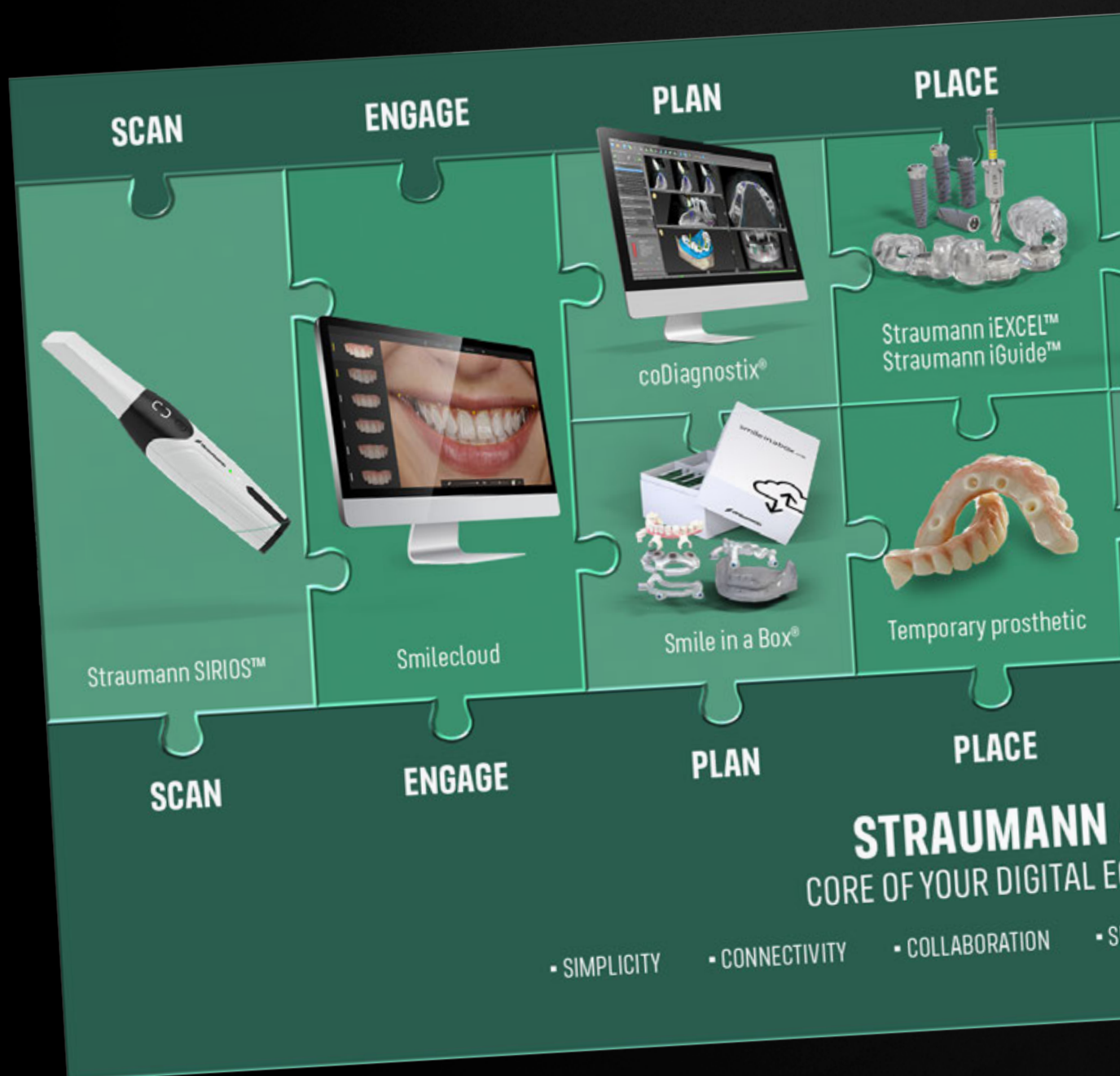
Physical stop and reference marks on the implant driver for a precise vertical placement of the implant and orientation of its connection.

# EXCEL WITH THE STRAUMANN® DIGITAL WORKFLOW

# FULLY INTEGRATED

# END-TO-END SOLUTIONS.

Straumann iGuide™ is part of the digital ecosystem which covers the entire digital workflow.









# ONE-FOUR-ONE **TRUE** CLINICAL VERSATILITY

## **ONE SET OF INSTRUMENTS**

Now you can choose your implant option, even during surgery. A single instrument set works with all four Straumann iEXCEL™ implant designs.

## **FOUR IMPLANT DESIGNS**

Address almost every patient situation and excel in immediate treatment protocols with four implant designs in a single system.

### **BLX AND TLX: EXCEL IN IMMEDIACY**

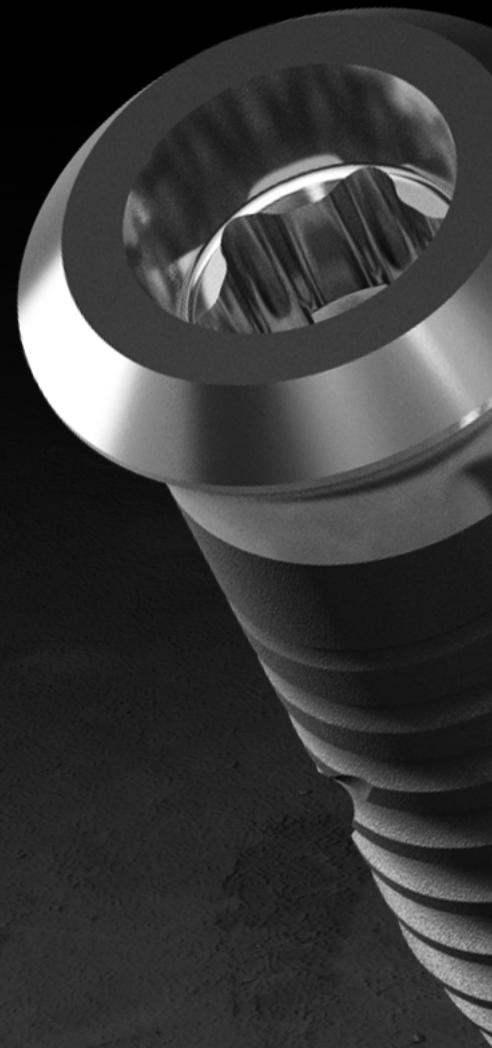
Featuring Dynamic Bone Management, our unique implant design makes immediate protocols achievable and predictable – even in challenging extraction sites, defective sites, or soft bone.

### **BLC AND TLC: CONFIDENCE TO PERFORM IN ALL INDICATIONS**

Our new generation of tapered implants with slim apices are designed for less invasive treatments, efficient insertion and high primary stability.

## **ONE SIZE PROSTHETIC CONNECTION**

Streamline prosthetic stock thanks to same prosthetic connection across all implant diameters.





**Straumann® SLActive®** surface demonstrates 100 % implant survival rate, even in patients compromised by smoking, diabetes, or radiation therapy.<sup>8-10</sup>



**Straumann® Roxolid®** alloy is stronger and biologically superior to titanium, enabling less invasive and bone preserving treatment options using smaller, stronger implants.<sup>11-14</sup>





# ONE CONNECTION. ONE DRILL SET. ONE INSTRUMENT SET.

NO LIMITS. JUST CHOICE.



“  
After 5 years of using BLX,  
I can say that the TorcFit™  
connection is awesome –  
crestal bone stability  
is outstanding. ”

Dr. Algirdas Puisys, Periodontologist, Lithuania



## TORCFIT™ CONNECTION

One internal conical connection across all implant diameters, engineered for high strength and slim abutment designs.

- Torx index allows for high torque transfer and six positions for flexible implant-abutment alignment
- Precise fit of 7° conical connection, screw only engages when abutment is correctly seated
- Abutment is secured with friction fit with a high mechanical stability and stress distribution
- Single prosthetic connection and consistent tools reduce the inventory, simplify use, and streamline staff training



## STRAUMANN iGUIDE™

Straumann iGuide™ is our static guided system for Straumann iEXCEL™ implant lines. Designed for fully guided implant bed preparation and insertion in combination with a surgical template.

- Designed for straightforward use
- Option to seamlessly integrate to Straumann® digital workflows
- One-hand surgery possibility thanks to drills with physical stops

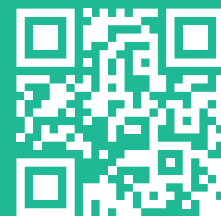


## STRAUMANN PROCLEAN™ iGUIDE

The Straumann ProClean™ Cassette virtually eliminates labor-intensive manual cleaning – simply put the used instruments back into the cassette during operation and let machines<sup>2</sup> do the rest.

- **Uncompromised hygiene:** Increased staff safety<sup>3</sup>, validated, user friendly design that ensures clean and dry instruments every time.
- **Simple workflow:** Validated, automated reprocessing makes instrument mix-ups a thing of the past.
- **Increased productivity:** Virtually eliminates labor-intensive manual cleaning. Free up more time for value-added clinical activities.

# STRAUMANN iGUIDE™ CONFIDENCE THROUGH GUIDANCE.



Discover  
Straumann iGuide™

## REFERENCES

**1** Abdelhay N, Prasad S, Gibson MP. Failure rates associated with guided versus non-guided dental implant placement: a systematic review and meta-analysis. *BDJ Open*. 2021 Aug 18;7(1):31 **2** Shi Y, Wang J, Ma C, Shen J, Dong X, Lin D A systematic review of the accuracy of digital surgical guides for dental implantation. *Int J Implant Dent*. 2023 Oct 25;9(1):38. **3** Gargallo-Albiol J, Barootchi S, Marqués-Guasch J, Wang HL. Fully Guided Versus Half-Guided and Freehand Implant Placement: Systematic Review and Meta-analysis. *Int J Oral Maxillofac Implants*. 2020 Nov/Dec;35(6):1159-1169 **4** Tattan M, Chambrone L, González-Martín O, Avila-Ortiz G. Static computer-aided, partially guided, and free-handed implant placement: A systematic review and meta-analysis of randomized controlled trials. *Clin Oral Implants Res*. 2020 Oct;31(10):889-916. **5** Romandini M, Ruales-Carrera E, Sadilina S, Hämmerle CHF, Sanz M. Minimal invasiveness at dental implant placement: A systematic review with meta-analyses on flapless fully guided surgery. *Periodontol 2000*. 2023 Feb;91(1):89-112. **6** Heng S, Arunjarosuk S, Pozzi A, Damrongsiriat N, Pimkhaotham A, Mattheos N. Comparing Medium to Long Term Esthetic, Clinical, and Patient Reported Outcomes Between Freehand and Computer Assisted Dental Imp **7** Sindhusa BV, Rajasekar A. A short review on guided implant surgery and its efficiency. *Bioinformation*. 2022 Sep 30;18(9):764-767. **8** Alsahhaf A et al. Survival of Titanium-Zirconium and Titanium Dental Implants in Cigarette-smokers and Never-smokers: A 5-Year Follow-up. *Chin J Dent Res*. 2019;22(4):265-272 **9** Cabrera-Domínguez JJ, Castellanos-Cosano L, Torres-Lagares D, Pérez-Fierro M, Machuca-Portillo G. Clinical performance of titanium-zirconium implants with a hydrophilic surface in patients with controlled type 2 diabetes mellitus: 2-year results from a prospective case-control clinical study. *Clin Oral Investig*. 2020 Jul;24(7):2477-2486 **10** Nelson, K., Stricker, A., Raguse, J.-D. and Nahles, S. (2016), Rehabilitation of irradiated patients with chemically modified and conventional SLA implants: a clinical clarification. *J Oral Rehabil*, 43: 871-872 **11** Bernhard N et al. *Forum Implantologicum* 2009; 5(1): 30-39 **12** Hotchkiss KM et al. *Clin Oral Implants Res*. 2017 Apr;28(4):414-423 **13** Al-Nawas B. et al. *J Oral Implantol*. 2015 Aug;41(4):e118-25 **14** Chiapasco M. et al. *Clin Oral Implants Res*. 2012 Oct;23(10):1136-41 **15** iGuide Surgical Protocol Validation (DEV 0049139), data on file.



## International Headquarters

Institut Straumann AG

Peter Merian-Weg 12

CH-4002 Basel, Switzerland

Phone +41 (0)61 965 11 11

Fax +41 (0)61 965 11 01

[www.straumann.com](http://www.straumann.com)

© Institut Straumann AG, 2025. All rights reserved.

Straumann® and/or other trademarks and logos from Straumann® mentioned herein are the trademarks or registered trademarks of Straumann Holding AG and/or its affiliates.

 **straumann**