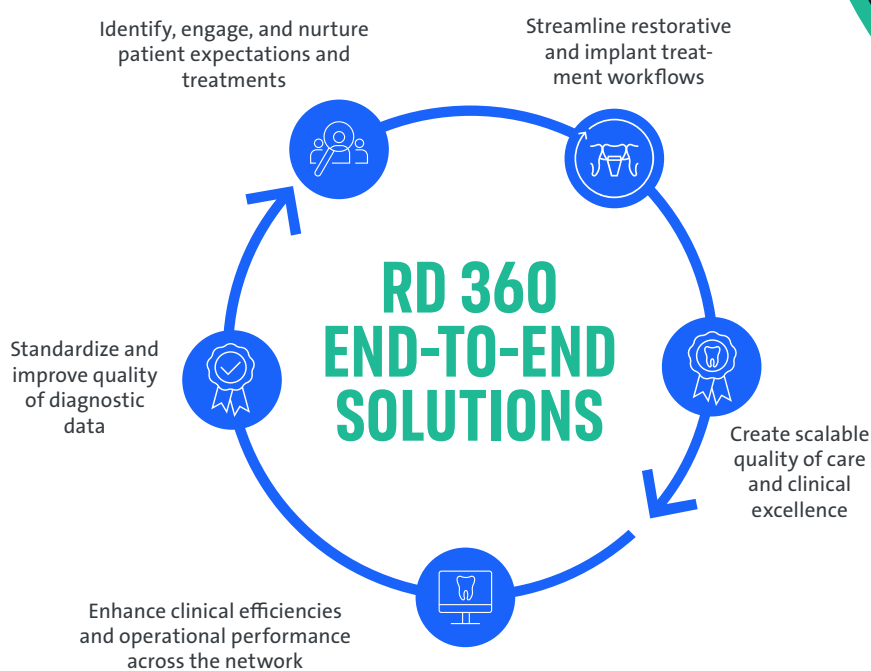


## THE STRAUMANN RESTORATIVE DENTISTRY 360 DIGITAL FULL-ARCH PILOT.

The Straumann RESTORATIVE DENTISTRY 360 (RD 360) Digital Full-Arch Pilot validated a direct intraoral scanning protocol using the EXACT™ digital full-arch system within a real-world dental organization setting. This workflow delivers an effective and cost-efficient, fully digital solution for full-arch treatments, significantly enhancing the patient experience.



- **06** CLINICS
- **05** MONTHS
- **60** PILOT CASES\*
- **30** CONVENTIONAL CASES



To evaluate the potential of the fully digital workflow, Straumann Group Enterprise Solutions partnered with the U.S.-based Dental Service Organization (DSO) ClearChoice. The ClearChoice–Straumann collaboration supported clinical excellence by enhancing collaboration to improve patient outcomes and progress dentistry to a new level. To assess the potential of the fully digital workflow, Straumann Group Enterprise Solutions partnered with the US-based DSO ClearChoice with 100+ clinics, a recognized leader and innovator in full-arch treatments. **6 partnering clinics** were onboarded through June and July 2024.

Achieving a **97% success rate** in delivering passively fitting bars—satisfying both patients and clinicians—the pilot demonstrated a strong value proposition for the fully digital workflow in full-arch treatments. It also uncovered opportunities to drive efficiencies and elevate patient care within the DSO model.

\*= a case is defined as an arch: may be double or single arch cases.

# RESULTS

The Straumann RD 360 pilot demonstrated the strong value proposition of the fully digital workflow for full-arch treatments, while creating opportunities to drive efficiencies and enhance patient experience.



97%

prosthetic first fit rate was achieved by the EXACT™ workflow for the total pilot cohort at try-in.



50%

time reduction at impression appointment.

Type	Time	Average Actual chair time (traditional workflow)	Average Actual chair time (EXACT™ workflow)	Appointment time spent (EXACT™ workflow)	N° of arches
Single Arch	120 mins	113 mins	63 mins	53%	44
Double Arch	180 mins	135 mins	70 mins	39%	23

Source: A pilot user experience study conducted in partnership with Straumann Group Enterprise Solutions and ClearChoice, November 2024. Results are based on real-world evidence of clinician and patient treatment experiences across six ClearChoice treatment centers, over five months. Not all practices may achieve results and results depend on the efforts of the individual practice.

Moreover, the pilot\* revealed that the digital workflow advances clinics in Straumann’s three strategic focus areas:



## ENHANCE OPERATIONAL EFFICIENCY

The fully digital workflow contributes significantly to operational improvements:



## ELEVATE CLINICAL EXCELENCE

Based on Net Promoter Score (NPS) surveys, the digital workflow achieved an **elevated clinic enjoyment score of 9.12\*\*** compared to the conventional (baseline) method, and a **9.15\*\*\* score for patient comfort**.

Elevated NPS Score



## ACTIVATE GROWTH POTENTIAL

The EXACT™ digital workflow gave practices back an average of 60 minutes per arch, offering greater convenience for patients and unlocking considerable opportunities to activate growth potential and provides considerable opportunity to activate growth potentials.



\*Straumann Report: EXACT™ Pilot data excel file.  
\*\*Standard Deviation: 0.90  
\*\*\*Standard Deviation: 0.38