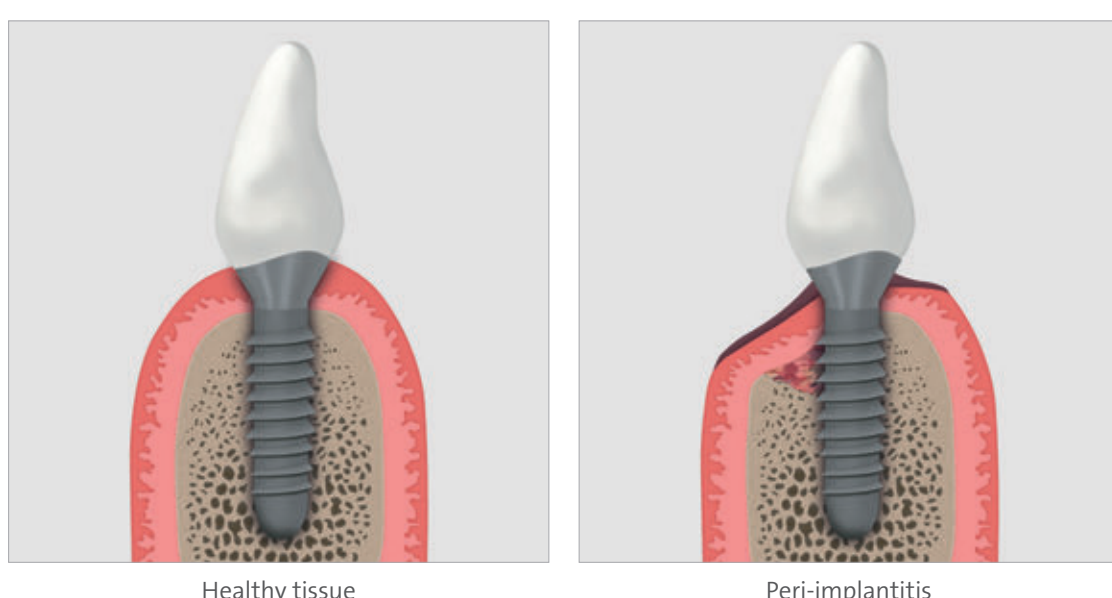


# Peri-implantitis

## New insights

### Peri-implantitis

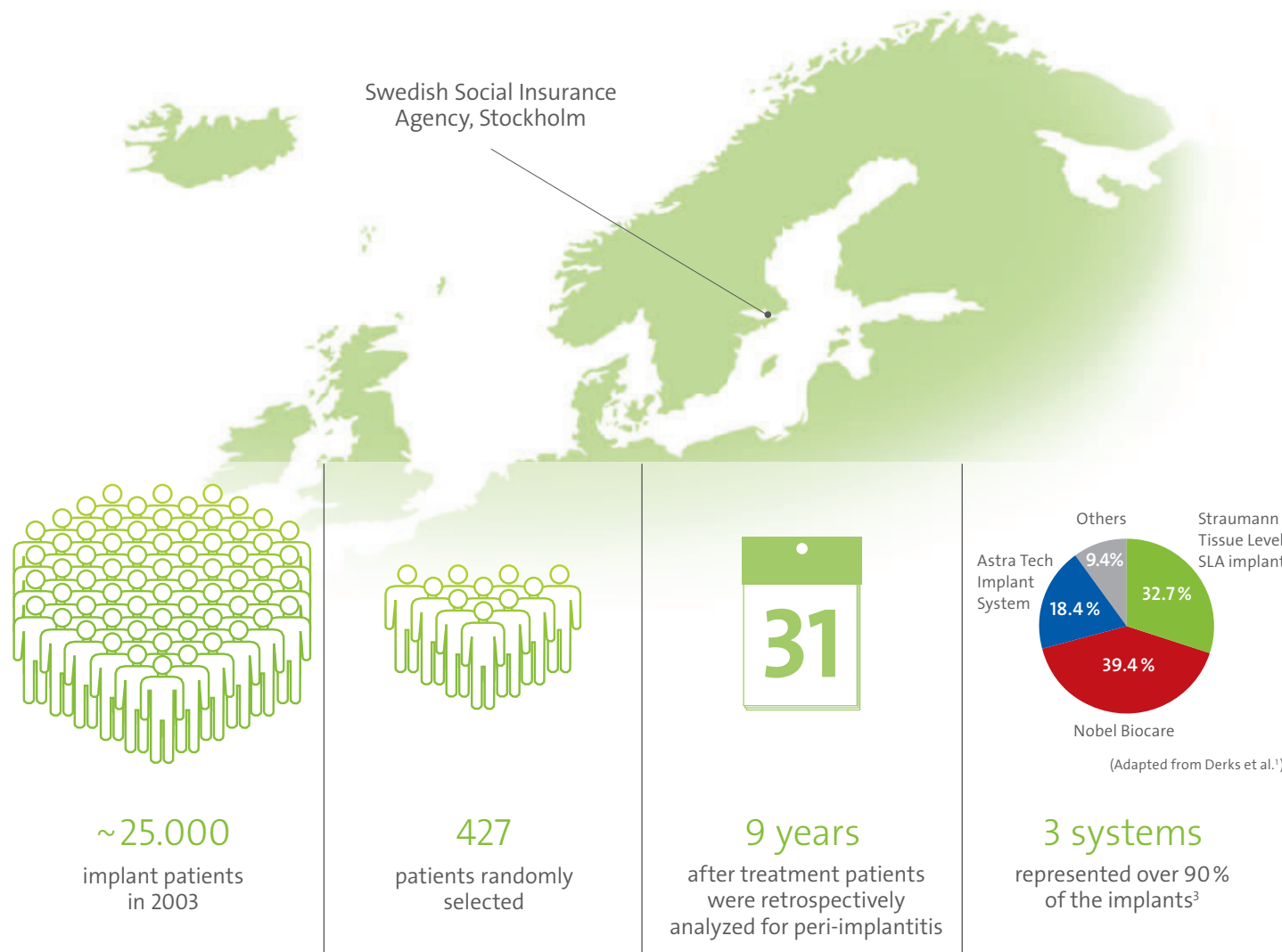
Inflammation affecting the soft tissue and bone around dental implants.  
If not treated it can lead to implant loss.



### Contributing factors

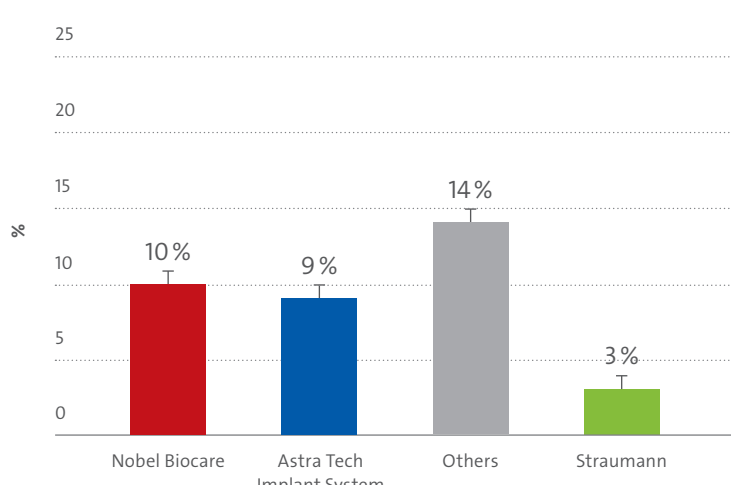


### Study overview<sup>1-2</sup>

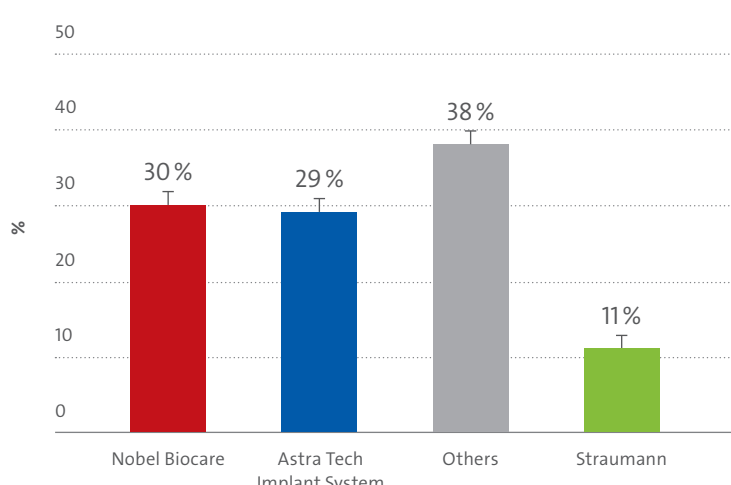


### Result

The probability of being diagnosed with peri-implantitis<sup>4</sup> 9 years after implant therapy was lowest with the Straumann TL SLA implants.



Implants (≥ 4) used by specialist in patients with no periodontitis (Adapted from Derks et al.)



Implants (≥ 4) used by specialist in patients with periodontitis (Adapted from Derks et al.)

### Conclusion

The findings in this study are extremely relevant for dentists and patients who base their choice of implant on independent clinical evidence. These results add weight to previous reported findings showing high success rates with Straumann implants.<sup>5</sup>

<sup>1</sup> Effectiveness of implant therapy analyzed in a Swedish population: prevalence of peri-implantitis. Derks J, Schaller D, Häkansson J, Wennström JL, Tomasi C, Berglundh T. J Dent Res (2015) accepted for publication. (Doctoral thesis reference: ISBN 978-91-628-9491-7). <sup>2</sup> Retrospective evaluation of data from Swedish Social Insurance Agency. <sup>3</sup> 98.3% Nobel Biocare Implants had a TiUnite® surface, 96.6% Astra Tech implants a TiOblast® surface, all Straumann TL implants a SLA® surface. Adapted from Derks et al. <sup>4</sup> Defined as Bleeding on Probing (BoP)/suppuration (SUP) and bone loss > 2mm. <sup>5</sup> Buser D et al Clin Implant Dent Relat Res. 2012 Dec;14(6): 839-51. Rocuzzo M et al Clin Oral Implants Res. 2014 Oct;25(10):1105-12. van Velzen FJ et al Clin Oral Implants Res. 2014 Nov 5. Fischer K et al Clin Implant Dent Relat Res. 2012 Dec;14(6):808-15. Derks J. et al. Published online before print December 11, 2014, doi: 10.1177/0022034514563077 JDR December 11, 2014