

FLUSSO DI LAVORO PROTESICO BASATO SULLE INDICAZIONI

Straumann® Dental Implant System



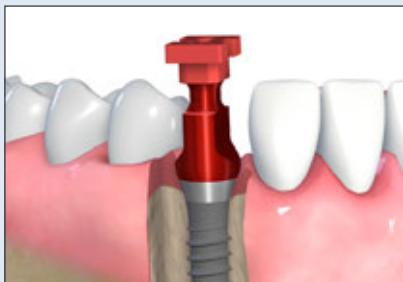
Indice

CORONA SINGOLA TISSUE LEVEL AVVITATA	2
CORONA SINGOLA TISSUE LEVEL CEMENTATA	4
PONTE TISSUE LEVEL AVVITATO	6
PONTE TISSUE LEVEL CEMENTATO	8
RESTAURO IBRIDO TISSUE LEVEL	10
CORONA BONE LEVEL – TISSUE LEVEL RESTAURO VARIOBASE®	12
CORONA SINGOLA BONE LEVEL AVVITATA	14
CORONA SINGOLA BONE LEVEL CEMENTATA	16
PONTE BONE LEVEL AVVITATO	18
PONTE BONE LEVEL CEMENTATO	20
RESTAURO IBRIDO BONE LEVEL	22

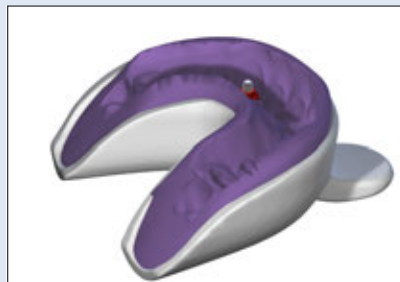
CORONA SINGOLA TISSUE LEVEL AVVITATA



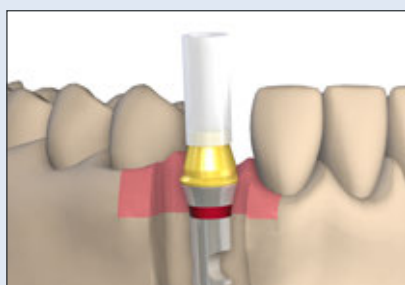
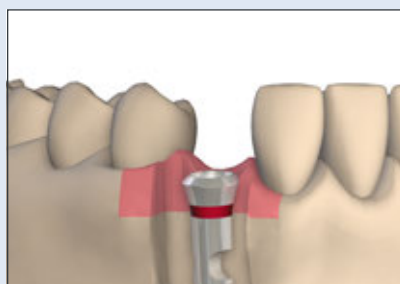
Usando RN
come esempio



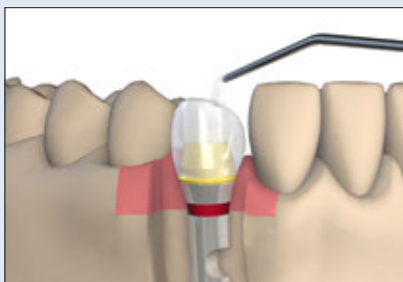
1 Prelievo dell'impronta
a livello dell'impianto



2 Realizzazione del modello
master



3 Scelta della componente
secondaria



4 Realizzazione del restauro



5 Inserimento del restauro

Protesi Tissue Level

Corona singola Tissue Level avvitata

Straumann®
Dental Implant System
Panoramica del sistema

NNC



RN



WN



1 Perni per impronte/
Cappette per impronta



048.134



048.862



048.870

2 Analoghi d'impianto



048.127



048.124



048.171

3 Componenti
secondarie in oro



048.592
incl. vite 048.313



048.642
incl. vite 048.356

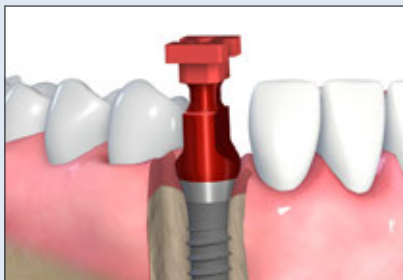


048.644
incl. vite 048.356

CORONA SINGOLA TISSUE LEVEL CEMENTATA



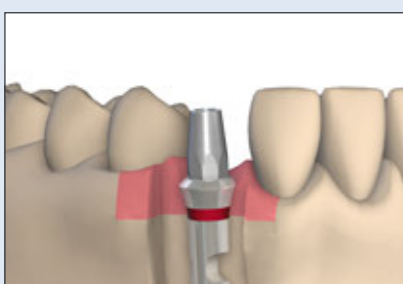
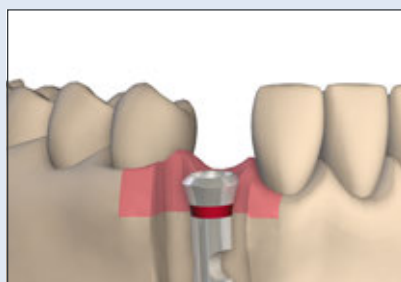
Usando RN
come esempio



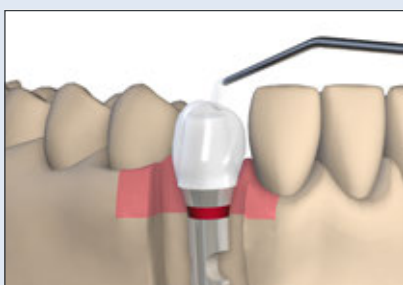
1 Prelievo dell'impronta a livello dell'impianto



2 Realizzazione del modello master



3 Scelta della componente secondaria



4 Realizzazione del restauro



5 Inserimento del restauro

Protesi Tissue Level

Corona singola Tissue Level cementata

Straumann®
Dental Implant System
Panoramica del sistema

NNC



RN



WN



1 Perni per impronte/
Cappette per impronta



048.134



048.862



048.870

2 Analoghi d'impianto



048.127



048.124



048.171

3 Componenti
secondarie in titanio

diritta



048.598



048.605



048.606

angolata



048.621 048.622



048.612/613/617/618*



048.608 048.609

4 Cappette in plastica

per componenti
secondarie diritte



048.256



048.663



048.243

per componenti
secondarie angolate



048.258



048.676V4



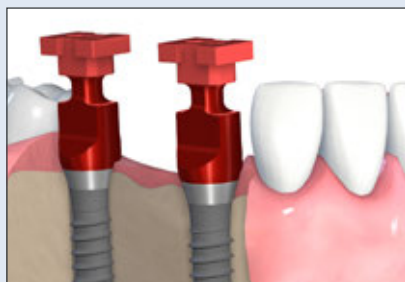
048.678

* Altezza 5,7 mm, disponibile anche in 6,7 mm

PONTE TISSUE LEVEL AVVITATO



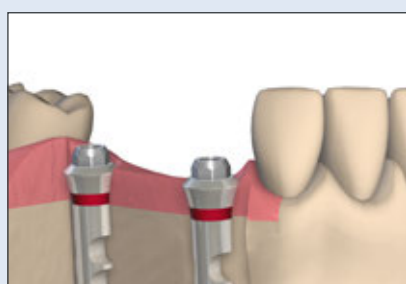
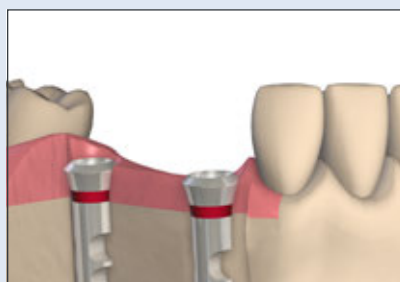
Usando RN
come esempio



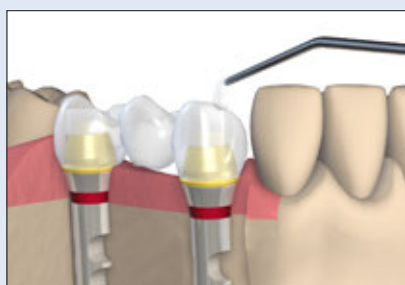
1 Prelievo dell'impronta
a livello dell'impianto



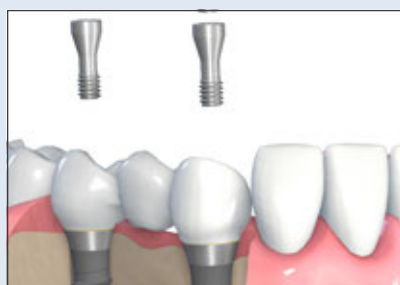
2 Realizzazione del modello
master



3 Scelta della componente
secondaria



4 Realizzazione del restauro



5 Inserimento del restauro

Protesi Tissue Level

Ponte Tissue Level avvitato

Straumann®
Dental Implant System
Panoramica del sistema

NNC



RN



WN



1 Perni per impronte/
Cappette per impronta



048.134



048.862



048.870

2 Analoghi d'impianto



048.127



048.124



048.171

3 Componenti secondarie

Oro



048.593
incl. vite 048.313

Titanio



048.601

Titanio



048.603

4 Cappette

Plastica



048.227
incl. vite
048.350

Oro



048.632
incl. vite
048.350

Plastica



048.666
incl. vite
048.350

Oro

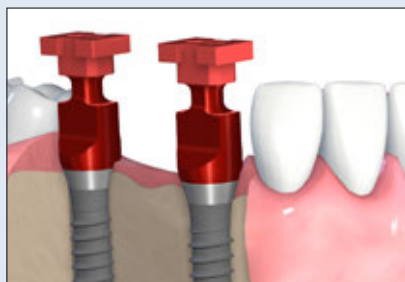


048.638
incl. vite
048.350

PONTE TISSUE LEVEL CEMENTATO



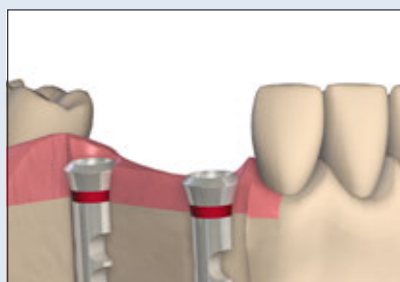
Usando RN
come esempio



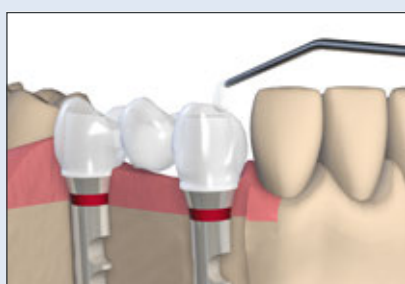
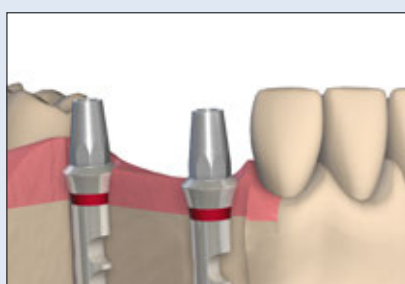
1 Prelievo dell'impronta
a livello dell'impianto



2 Realizzazione del modello
master



3 Scelta della componente
secondaria



4 Realizzazione del restauro



5 Inserimento del restauro

Protesi Tissue Level

Ponte Tissue Level cementato

Straumann®
Dental Implant System
Panoramica del sistema

NNC



RN



WN



1 Perni per impronta/
Cappette per impronta



048.134



048.862



048.870

2 Analoghi d'impianto



048.127



048.124



048.171

3 Componenti
secondarie in titanio

diritta



048.598



048.605



048.606

angolato



048.621 048.622



048.612/613/617/618*



048.608 048.609

4 Cappette in plastica

per componenti
secondarie diritte



048.257



048.662



048.244

per componenti
secondarie angolate



048.258



048.676V4



048.678

* Altezza 5,7 mm, disponibile anche in 6,7 mm

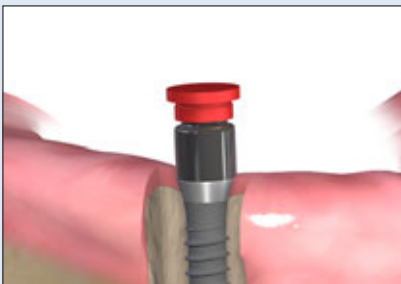
RESTAURO IBRIDO TISSUE LEVEL



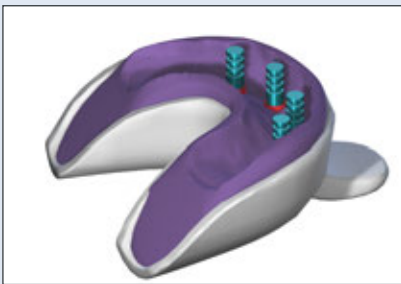
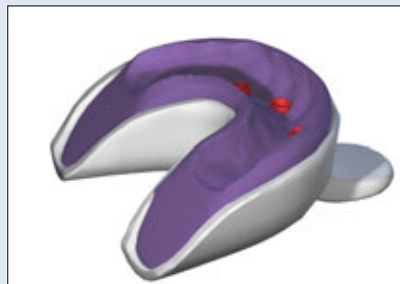
Usando RC
come esempio



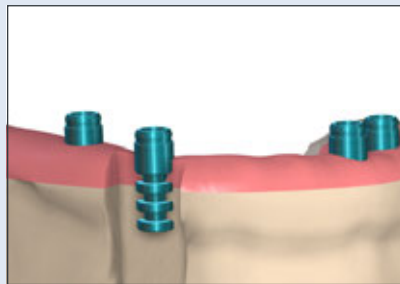
1 Scelta della componente secondaria



2 Prelievo dell'impronta a livello della componente secondaria



3 Realizzazione del modello master



4 Realizzazione del restauro



5 Inserimento del restauro

Protesi Tissue Level

Restauro ibrido Tissue Level

Straumann®
Dental Implant System
Panoramica del sistema

NNC



RN



WN



1 Componenti secondarie Novaloc®

0°

15° | tipo A

15° | tipo B



048.806 –
048.811

048.842 –
048.846

048.847 –
048.851

0°

15°



048.812 –
048.817

048.832 –
048.836

0°

15°



048.818 –
048.823

048.837 –
048.841

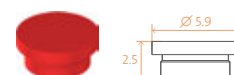
2 Matrice per impronta



2010.722-NOV



2010.722-NOV



2010.722-NOV

3 Analoghi d'impianto (livello della componente secondaria)



2010.721-NOV

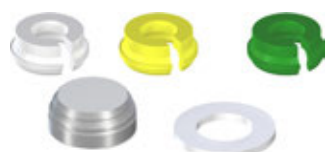


2010.721-NOV

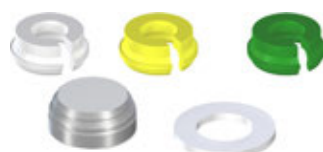


2010.721-NOV

4 Set da laboratorio/matrici



2010.601-NOV



2010.601-NOV



2010.601-NOV

CORONA BONE LEVEL – TISSUE LEVEL RESTAURO VARIOBASE®



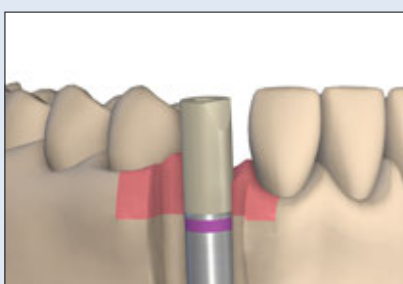
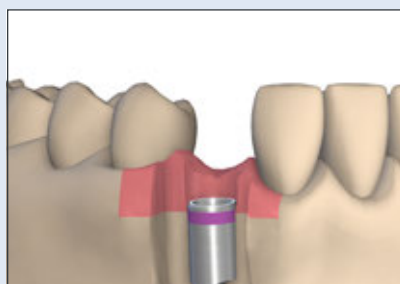
Usando RC
come esempio



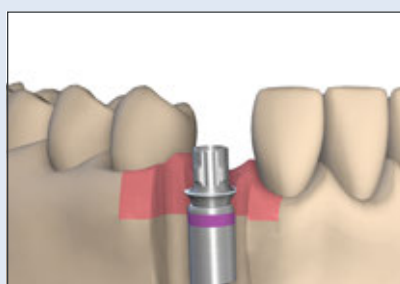
1 Prelievo dell'impronta
a livello dell'impianto



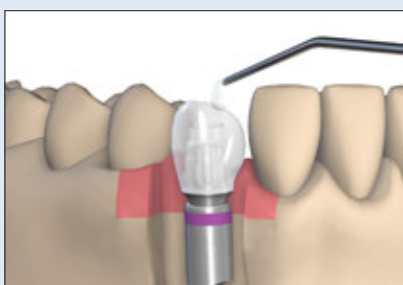
2 Realizzazione del modello
master



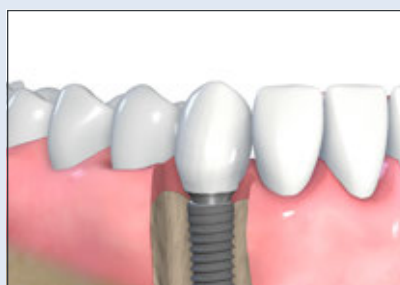
3 Scansione del modello*



4 Scelta della componente
secondaria



5 Realizzazione del restauro



6 Inserimento del restauro

Protesi Bone Level - Tissue Level

Corona Bone Level – Tissue Level Restauro Variobase®

Straumann®
Dental Implant System
Panoramica del sistema

SC



NC



RC



NNC



RN



WN



1 Perni per impronte



025.0022



025.2202



025.4202



048.128



048.010



048.091

2 Analoghi d'impianto



025.0023



025.2101



025.4101



048.127



048.124



048.171

3 Corpi di scansione*



025.0025



025.2915



025.4915



048.173



048.168



048.169

4 Componenti secondarie Variobase®



022.0038
incl. vite
025.0031



025.2921
incl. vite
025.2900



025.4921
incl. vite
025.4900



048.709
incl. vite
048.313



048.710
incl. vite
048.356



048.711
incl. vite
048.356

4 Cappette calcinabili



023.0011



023.2756



023.4759



048.267



048.268



048.269

* opzionale: solo per flusso di lavoro digitale

CORONA SINGOLA BONE LEVEL AVVITATA



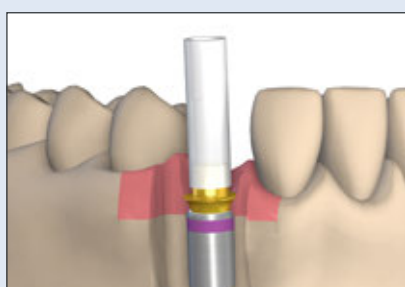
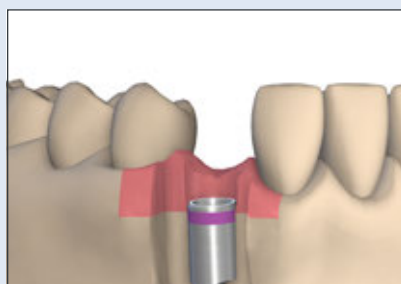
Usando RC
come esempio



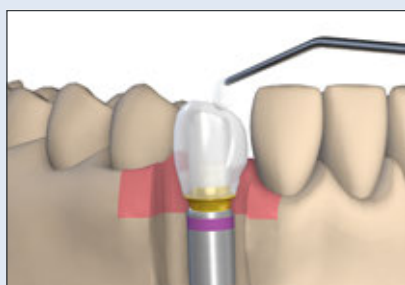
1 Prelievo dell'impronta a livello dell'impianto



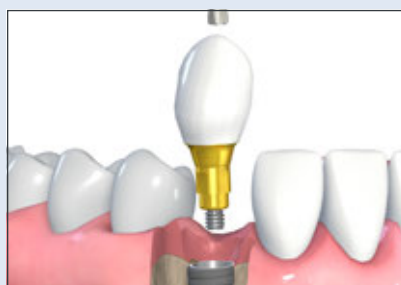
2 Realizzazione del modello master



3 Scelta della componente secondaria



4 Realizzazione del restauro



5 Inserimento del restauro

Protesi
Bone Level -
Tissue Level

Corona singola Bone Level
avvitata

Straumann®
Dental Implant System
Panoramica del sistema

NC



RC



1 Perti per impronte



025.2202



025.4202

2 Analoghi d'impianto



025.2101



025.4101

3 Componenti
secondarie in oro



022.2410
incl. vite 025.2900



022.4410
incl. vite 025.4900

CORONA SINGOLA BONE LEVEL CEMENTATA



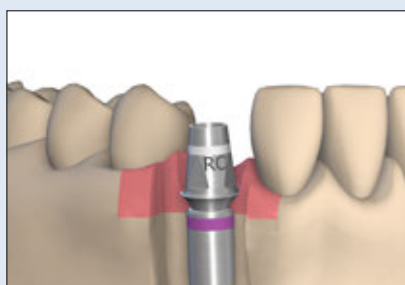
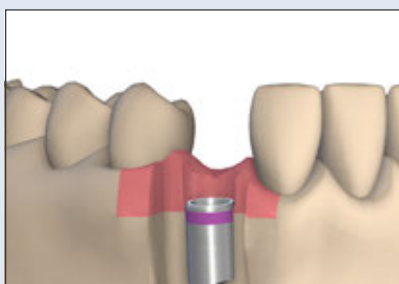
Usando RC
come esempio



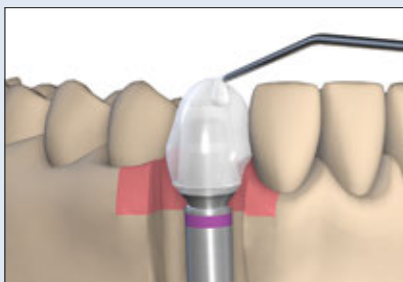
1 Prelievo dell'impronta
a livello dell'impianto



2 Realizzazione del modello
master



3 Scelta della componente
secondaria



4 Realizzazione del restauro



5 Inserimento del restauro

Protesi Bone Level

Corona singola Bone Level cementata

Straumann®
Dental Implant System
Panoramica del sistema

NC



RC



1 Perni per impronte



025.2202



025.4202

2 Analoghi d'impianto



025.2101



025.4101

3 Componenti
secondarie in titanio



022.2311



022.2315



022.4321



022.4325

4 Cappette calcinabili



023.2316

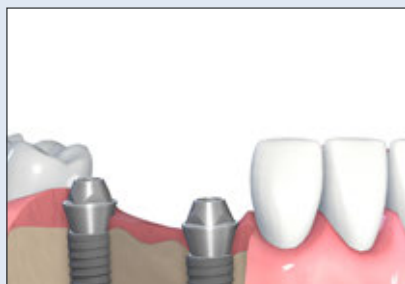


023.4326

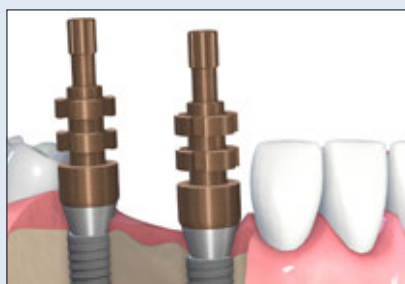
PONTE BONE LEVEL AVVITATO



Usando RC
come esempio



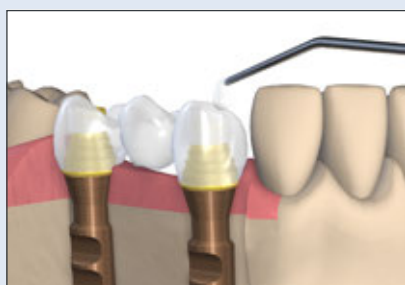
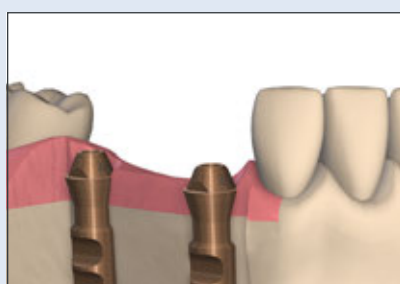
1 Scelta della componente secondaria



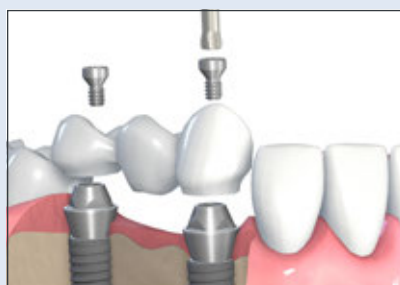
2 Prelievo dell'impronta a livello della componente secondaria



3 Realizzazione del modello master



4 Realizzazione del restauro



5 Inserimento del restauro

Protesi Bone Level

Ponte Bone Level avvitato

Straumann®
Dental Implant System
Panoramica del sistema

NC



NC/RC



1 Componenti secondarie in titanio

0° | 3,5 mm



022.2746S

0° | 4,6 mm



022.2748S

17° | 4,6 mm



022.2749S

30° | 4,6 mm



022.2751S

0° | 4,6 mm



022.4746S

17° | 4,6 mm



022.4747S

30° | 4,6 mm



022.4749S

2 PERNI PER IMPRONTE



025.0011



025.0012

3 Analoghi d'impianto

0° | 3,5 mm



023.2754

0° | 4,6 mm



023.4756

17-30° | 4,6 mm



023.4757

4 Cappette

3,5 mm
Titanio



023.2749
incl. vite
023.4763

3,5 mm
Plastica



023.2755
incl. vite
023.4763

3,5 mm
Oro



023.2752
incl. vite
023.4763

3,5 mm
Variobase®



023.0000
incl. vite
023.4763

4,6 mm
Titanio



023.4751
incl. vite
023.4763

4,6 mm
Plastica



023.4758
incl. vite
023.4763

4,6 mm
Oro



023.4754
incl. vite
023.4763

4,6 mm
Variobase®

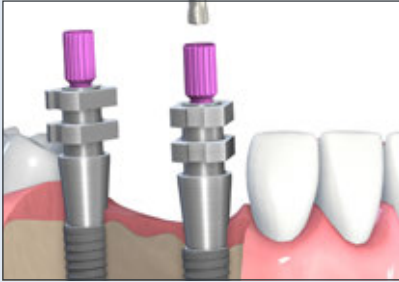


023.0001
incl. vite
023.4763

PONTE BONE LEVEL CEMENTATO



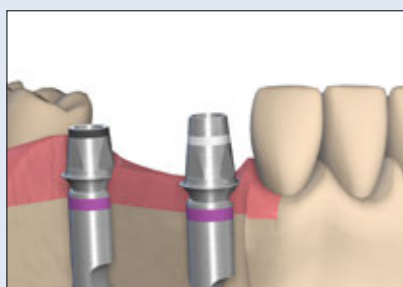
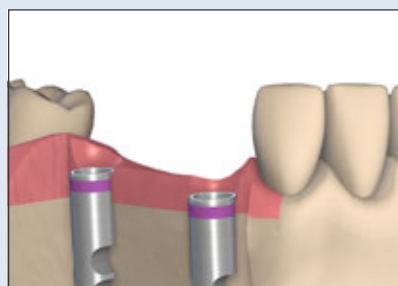
Usando RC
come esempio



1 Prelievo dell'impronta
a livello dell'impianto



2 Realizzazione del modello
master



3 Scelta della componente
secondaria



4 Realizzazione del restauro



5 Inserimento del restauro

Protesi Bone Level

Ponte Bone Level cementato

Straumann®
Dental Implant System
Panoramica del sistema

NC



RC



1 Perni per impronte



025.2202



025.4202

2 Analoghi d'impianto



025.2101



025.4101

3 Componenti
secondarie in titanio



022.2311



022.2315



022.4321



022.4325

4 Cappette calcinabili



023.2310

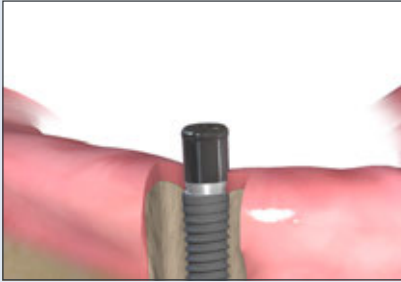


023.4320

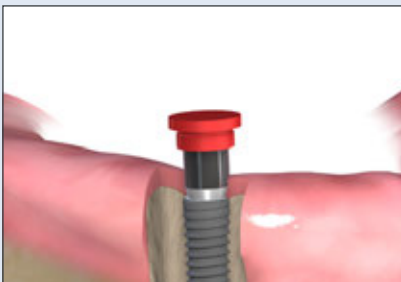
RESTAURO IBRIDO BONE LEVEL



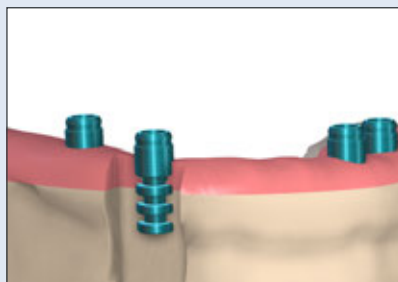
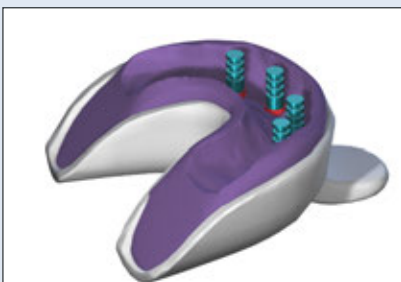
Usando RC
come esempio



1 Scelta della componente secondaria



2 Prelievo dell'impronta a livello della componente secondaria



3 Realizzazione del modello master



4 Realizzazione del restauro



5 Inserimento del restauro



Protesi Bone Level

Restauro ibrido Bone Level

Straumann®
Dental Implant System
Panoramica del sistema

NC



RC



1 Componenti secondarie Novaloc®

0°



022.0046 –
022.0051

15° | tipo A



022.0062 –
022.0066

15° | tipo B



022.0072 –
022.0076

0°



022.0052 –
022.0057

15° | tipo A



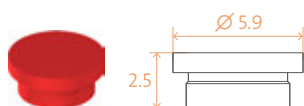
022.0067 –
022.0071

15° | tipo B

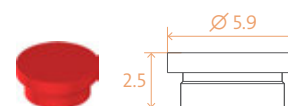


022.077 –
022.081

2 Matrice per impronta



2010.722-NOV



2010.722-NOV

3 Analoghi d'impianto (livello della componente secondaria)

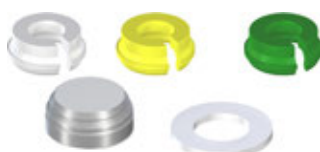


2010.721-NOV



2010.721-NOV

4 Set da laboratorio/matrici



2010.601-NOV



2010.601-NOV

International Headquarters

Institut Straumann AG
Peter Merian-Weg 12
CH-4002 Basel, Switzerland
Phone +41 (0)61 965 11 11
Fax +41 (0)61 965 11 01
www.straumann.com