

Stage 3 | Prosthetic procedures

Step 2

Fabrication of the final prosthesis

Prosthetic procedures

Step 2 | Fabrication of the final prosthesis

Overview



Assessment and treatment planning



Step 1 | Patient's expectations,
history and examination



Step 2 | Treatment planning



Step 3 | Consultation and consent



Step 4 | Fabrication of the surgical drill template

Surgical procedures



Step 1 | Implant surgery



Step 2 | Post-operative review and suture removal

7–10 days

6–8 weeks

Prosthetic procedures



Step 1 | Impression-taking



Step 2 | Fabrication of the final prosthesis



Step 3 | Insertion of the final prosthesis

2 weeks

Aftercare and maintenance



Step 1 | Review visit



Step 2 | Maintenance visit

3–6 months
(or as necessary)



In clinic with patient



Office / Lab work

Contents

<u>Introduction</u>	4
<u>Learning objective</u>	4
<u>Materials for the dental laboratory</u>	5



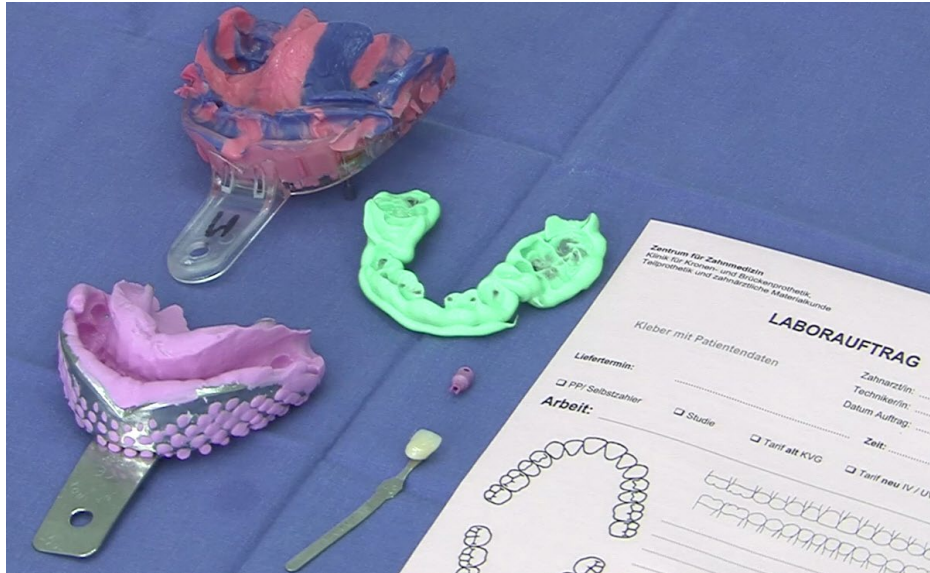
Prosthetic procedures

Step 2 | Fabrication of the final prosthesis

Introduction



Introduction



This step explains the necessary information which should be communicated to your lab to help your dental technician fabricate the final prosthesis required.

We highly recommend that you work with [lab technicians](#) who are experienced in implant prosthetic restorations and familiar with the Straumann® Dental Implant System (SDIS).

Understand what information to provide to your lab technician.

Work with lab technicians who are familiar with the Straumann® Dental Implant System.

Learning objective



Understand which information you have to provide to the dental technician together with the impression, in order to obtain the desired final prosthesis.



Materials for the dental laboratory

The following items must be prepared before communicating or sending to the dental laboratory:

1. Impression(s)
2. Bite registration (if taken)
3. [Impression Post](#) (if the [NC or RC Impression Post for closed tray](#) was used)

⚠ Caution: Items 1-3 should be disinfected and packed appropriately to protect against any damage during transportation to the laboratory.

4. Lab prescription form with clear instructions on the following:

- 4.1 Implant platform (e.g., RN, WN, NC or RC)
- 4.2 Tooth shade for the final crown

Disinfect and securely pack the impression(s), bite registration and Impression Post before sending them to your lab technician.

Inform your lab technician about the implant platform and desired tooth shade of the final crown.

Tips for the color assessment.



It is helpful to indicate which shade guide along with the chosen shade was used during the color assessment. Determining which tooth shade may also be done by the dental technician if there is a dental laboratory on site, or the patient may also visit the dental technician's office for the color assessment.





Prosthetic procedures

Step 2 | Fabrication of the final prosthesis

Materials for the dental laboratory



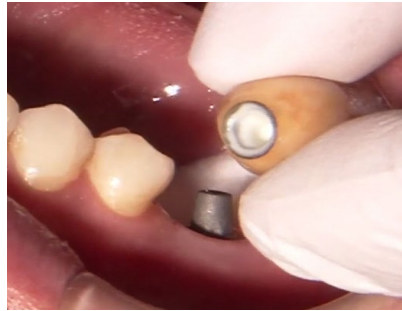
4.3 Type of restoration

Screw-retained



[Straumann® Variobase® for Crown](#) (for SP and BLT Implants)

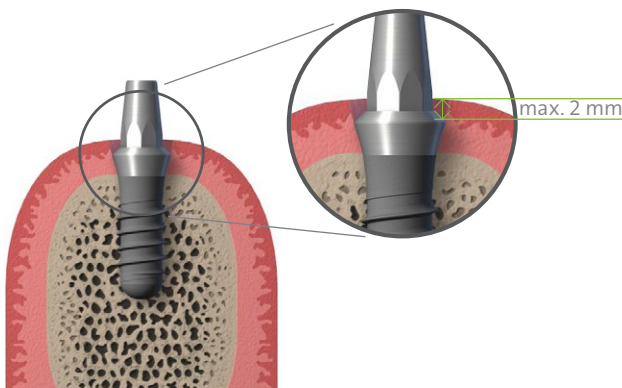
Cement-retained



[synOcta® Cementable Abutment](#) (for SP Implants)
[BL Cementable Abutment](#) (for BLT Implants)

Inform your lab technician if you desire a screw- or cement-retained restoration.

⚠ Caution: For cement-retained crowns, the cement margin must lie no deeper than 2.0 mm below the gingiva.



Cement-retained crowns: Consider that the cement margin must not be deeper than 2.0 mm below the gingiva.



Please click [here](#) for more information about cement-retained and screw-retained restorations.

Learn more about cement-retained and screw-retained restorations.



Prosthetic procedures

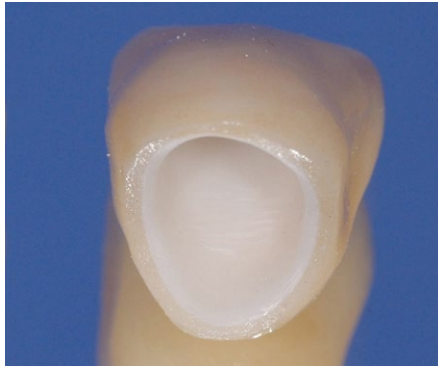
Step 2 | Fabrication of the final prosthesis

Materials for the
dental laboratory

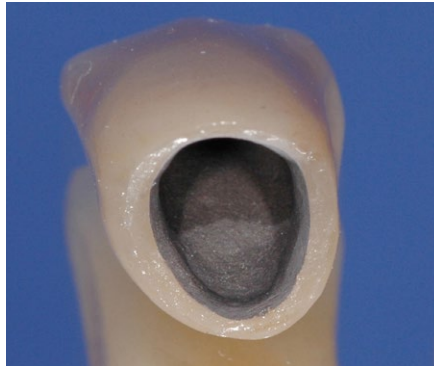


4.4 Crown material

All-ceramic crown



Porcelain fused to metal crown



Inform your lab technician about the desired crown material.



Prosthetic procedures

Step 2 | Fabrication of the final prosthesis

Checklist



CHECKLIST FOR FABRICATION OF FINAL PROSTHESIS

Disinfect and prepare the following to be sent to the dental lab:

- ☐ Impression(s)
- ☐ Bite registration (if taken)
- ☐ [Impression Post](#) (if the [NC or RC Impression Post for closed tray](#) was used)
- ☐ Lab prescription form with clear instructions on the following:
 - ☐ Implant platform (e.g., RN, WN, NC or RC)
 - ☐ Tooth shade for the final crown
 - ☐ Type of restoration: Cement-retained or Screw-retained
 - ☐ Crown material



Prosthetic procedures

Step 2 | Fabrication of the final prosthesis

DISCLAIMER

Straumann® Smart is a blended training and education program focused on the education of general dentists who want to become surgically active in the field of dental implantology. The program is limited to information pertaining to straightforward implant cases and focuses on a reduced portfolio of products that are suitable for the treatment of such cases.

All clinical Straumann® Smart content – such as texts, medical record forms, pictures and videos – was created in collaboration with Prof. Dr. Christoph Hämmerle, Prof. Dr. Ronald Jung, Dr. Francine Brandenburg-Lustenberger and Dr. Alain Fontollet from the University of Zürich, Clinic for Fixed and Removable Prosthodontics and Dental Material Science, Switzerland.

Straumann does not give any guarantee that Straumann® Smart provides sufficient knowledge or instruction for the dental professional to become surgically active in the field of implantology. It is the dental professional's sole responsibility to ensure that he/she has the appropriate knowledge and instruction before placing dental implants.

Straumann® Smart does not replace a careful and thorough analysis of each individual patient by a dental professional. Further, it does not imply any guarantee or warranty with regard to completeness of the information provided to the patient. It does not replace the dental professional's duty to inform the patient about the treatment, the products and the risks involved and to receive the patient's informed consent. The dental professional is solely responsible for determining whether or not a treatment or product is suitable for a particular patient and circumstances. Knowledge of dental implantology and instruction in the handling of the relevant products is always necessary and the sole responsibility of the dental professional. The dental professional must always comply with the individual product's Instructions For Use as well as all laws and regulations.

STRAUMANN DISCLAIMS, TO THE EXTENT POSSIBLE BY LAW, ANY LIABILITY, EXPRESS OR IMPLIED, AND BEARS NO RESPONSIBILITY FOR ANY DIRECT, INDIRECT, PUNITIVE, CONSEQUENTIAL OR OTHER DAMAGES, ARISING OUT OF OR IN CONNECTION WITH ANY INFORMATION PROVIDED TO PATIENTS, ERRORS IN PROFESSIONAL JUDGMENT, IN PRODUCT CHOICES OR PRACTICE IN THE USE OR INSTALLATION OF STRAUMANN PRODUCTS.

All clinical content as well as clinical and radiographic images are provided by courtesy of Prof. Dr. Christoph Hämmerle, Prof. Dr. Ronald Jung, Dr. Francine Brandenburg-Lustenberger and Dr. Alain Fontollet from the University of Zürich, Clinic for Fixed and Removable Prosthodontics and Dental Material Science, Switzerland.

International Headquarters

Institut Straumann AG

Peter Merian-Weg 12

CH-4002 Basel, Switzerland

Phone +41 (0)61 965 11 11

Fax +41 (0)61 965 11 01

www.straumann.com

© Institut Straumann AG, 2016. All rights reserved.

Straumann® and/or other trademarks and logos from Straumann® mentioned herein are the trademarks or registered trademarks of Straumann Holding AG and/or its affiliates.