

axiom® | The power of
simplicity.

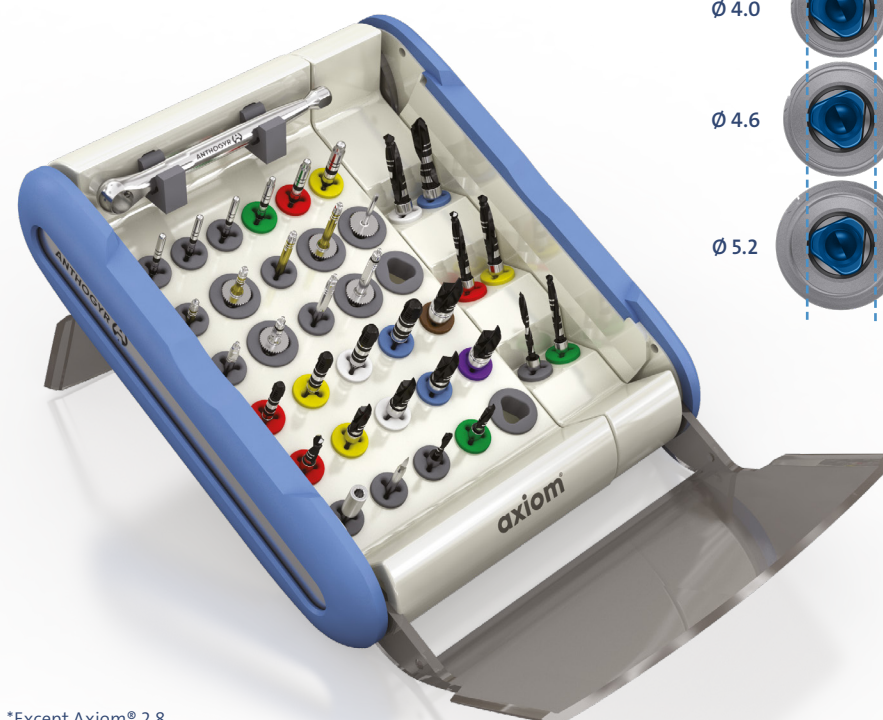
axiom®

Experience the perfect blend of simplicity and clinical performance with Axiom®'s advanced surgical solutions. Begin a new journey of professional growth and **true peace of mind.**

THE ONE AND UNIQUE.

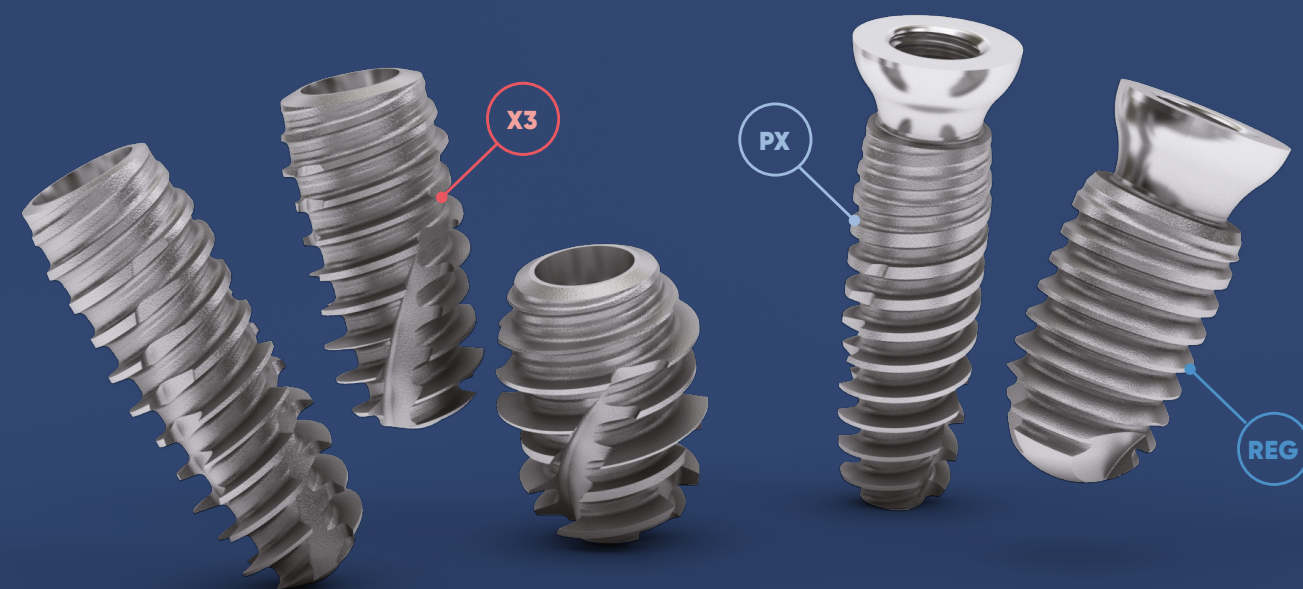
- 1 single surgical kit for all Axiom® implants*.
- Simplified protocols and the same instruments for all cases.
- Flexibility: switch implant mid-surgery to adapt to the clinical situation.

- 1 single connection for all implant profiles and diameters*.



The power of **simplicity.**

6 IMPLANTS
3 PROFILES
2 CLINICAL APPROACHES
1 UNIQUE KIT



3 IMPLANT DESIGNS FOR TOTAL FLEXIBILITY.

axiomX3®

- Innovative implant design developed for universal bone anchorage,
- bone preservation,
- clinical adaptability including immediate treatment protocols.

axiomPX®

- Indicated for immediate post-extraction placement and low-density bone.

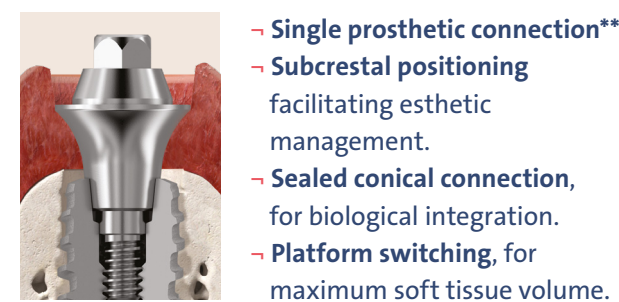
axiomREG®

- Versatile implant.
- Progressive anchorage.
- Controlled protocol.

2 CLINICAL APPROACHES
FREEDOM IS YOURS.

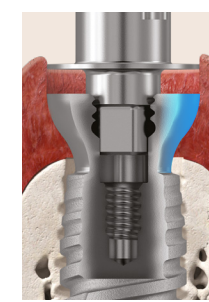
Complementary Axiom® Bone and Tissue Level solutions to choose for each patient the most adapted treatment regarding biological and esthetic needs.

boneLEVEL | Surgical and prosthetic flexibility.



- Single prosthetic connection**.
- Subcrestal positioning facilitating esthetic management.
- Sealed conical connection, for biological integration.
- Platform switching, for maximum soft tissue volume.

tissueLEVEL | Respect for biological processes.



- 2 platforms for all implant profiles and diameters***.
- Tissue Favored Design, for soft-tissue maximization and preservation.

**For all Bone Level implant profiles and diameters, including AxiomX3® implants in diameters 5.8 and 6.4 mm.

***N/4.0 platform available on Ø 3.4 and 4.0 mm implants.

DIGITAL FRONTRUNNER.

TURBOCHARGE YOUR WORKFLOW.

Stay ahead in digital implantology with our ever-evolving, open and flexible solutions. Enjoy a seamless experience and continuous progress on your digital journey!



Seamless Digital Integration

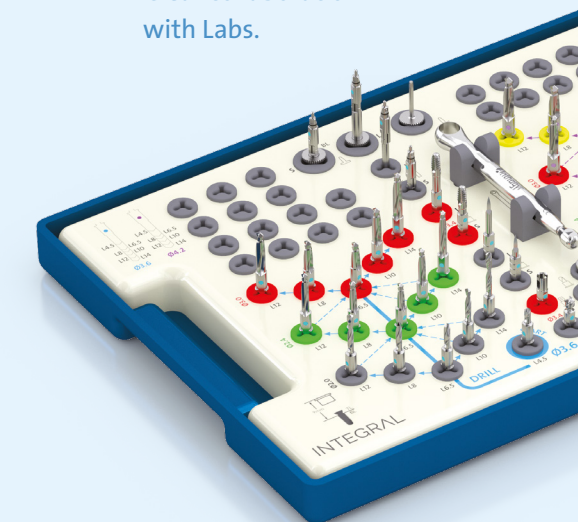
- From IOS or conventional impression.
- Compatibility with leading digital software and equipment.
- Preferred access to Straumann Group digital solutions and services.

Cutting-Edge Digital Prosthesis

- High-quality CAD/CAM prosthetics: Simeda® and Labside.
- Clear collaboration with Labs.

Efficiency booster

- INTEGRAL Guided Surgery for efficiency.
- Streamlined workflow from planning to final prosthesis including healing and temporization.



ANTHOGRYR 
A Straumann Group Brand

*Except Axiom® 2.8.

axiomX3[®]

MAKE IMPLANTOLOGY EASIER.

At your side, whatever your daily challenge, an effective clinical response, a new experience. Adapted to clinical diversity, while respecting and preserving the most precious environment: bone.

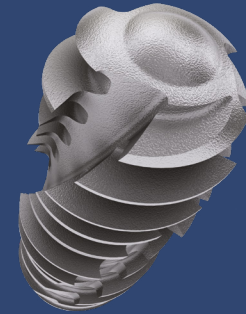


ANTHOGYR 
A Straumann Group Brand

THE QUINTESSENCE.

Universal bone anchorage

- Designed for less constraints in hard bone with minimal instrument sequence.
- Adaptable drilling protocol for added stability in low-density bone.
- Suitable for immediate placement protocols.

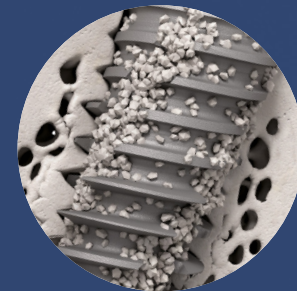


Full control guidance

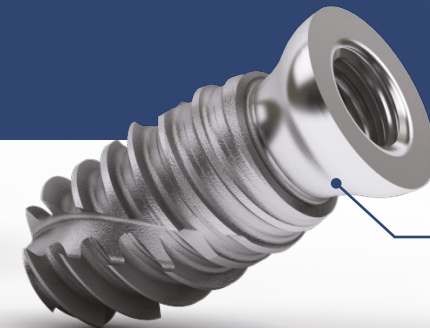
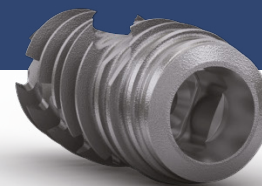
- More than a powerful insertion: go where you want to go!
- Designed for dynamic engagement and optimized stability, suitable in all situations, including immediate treatments.

Bone preservation

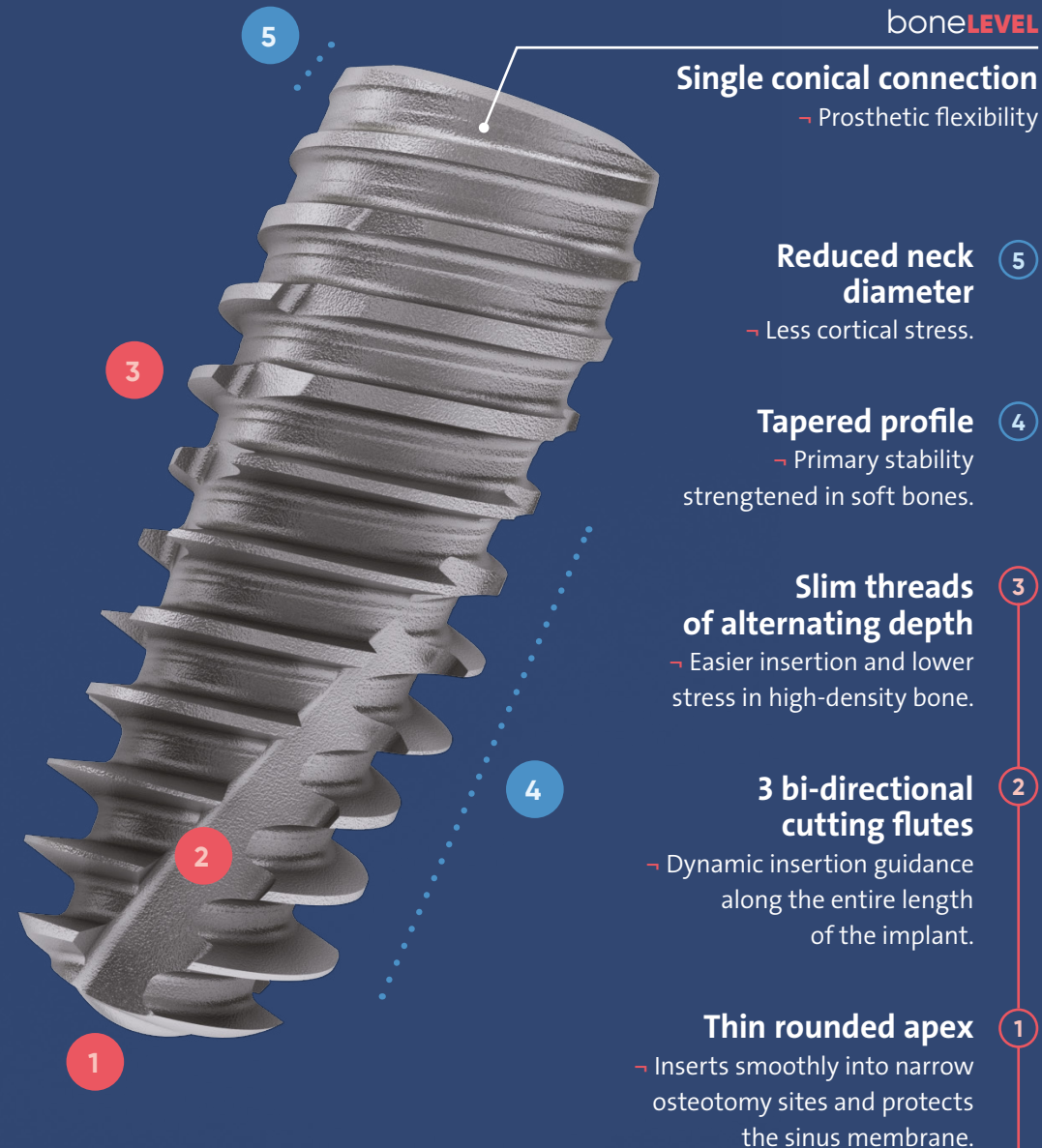
- Adaptable drilling protocols.
- Minimal invasiveness: fewer drills, no taps.
- Retention of bone fragments.



BONE IS GOLD.



HIGH-PERFORMANCE DESIGN.



Single conical connection

- Prosthetic flexibility

Reduced neck diameter

- Less cortical stress.

Tapered profile

- Primary stability strengthened in soft bones.

Slim threads of alternating depth

- Easier insertion and lower stress in high-density bone.

3 bi-directional cutting flutes

- Dynamic insertion guidance along the entire length of the implant.

Thin rounded apex

- Inserts smoothly into narrow osteotomy sites and protects the sinus membrane.

BONE CARE DESIGN
PATENTED

tissue**LEVEL**

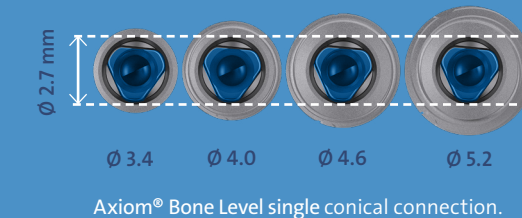
Tissue Favored Design

- Anatomical neck profile to maximize gingival volume, favorable to soft tissue.



MAKE IT SMILE.

For 15 years, Axiom[®] implant solutions have been synonymous with superior prosthetic results, embodying a philosophy that seamlessly integrates implants and prosthetics.



Axiom[®] Bone Level single conical connection.

Empower prosthetic freedom

Our meticulously crafted solutions are tailored to meet the expectations and preferences of your prosthetic partners, fostering collaboration for optimal patient care.

X-Base[®]

**INSPIRED
BY NASA
PATENTED**

Labside innovative range for greater flexibility

- Patented laser surface treatment for increased adhesion and time saving.
- Large choice of coronary heights and gingival profiles.
- Intuitive & accurate index for single.
- Angulated Access up to 25°.



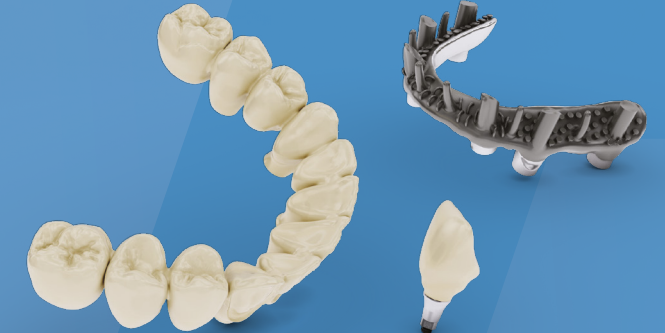
**COMING
SOON!**

PROSTH- CENTRICITY.

simeda[®]
byANTHOGYR

Unparalleled customized prosthetics

- Complete Simeda[®] CAD/CAM prosthetics for Axiom[®] and over 400 implant platforms.
- Angulated Access enhancing biosafety with widely available solutions.



Extensive range of abutments

- Multi-Unit Range for Axiom[®] both Bone Level and Tissue Level, utilizing the same secondary components for seamless integration.
- Temporary components for immediate esthetics and guided soft tissue healing.
- Solutions for cement-retained restorations and dentures providing versatile options to meet diverse clinical needs.



C185_GB - 2024-09

Photo credits: Anthogyr - Adobe Stock. All rights reserved. Actual products may differ from images.