

# Neodent Kits

# Neodent Kits

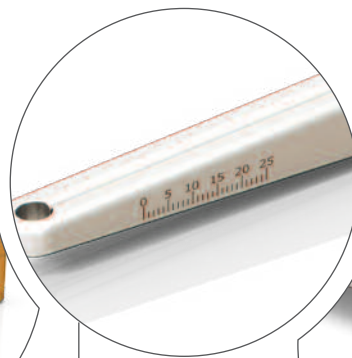
Direction Indicators are color-coded and numbered to show the exact implant size to be used.



Surgical and Prosthetic Wrench (single model) can be disassembled and has torque control.



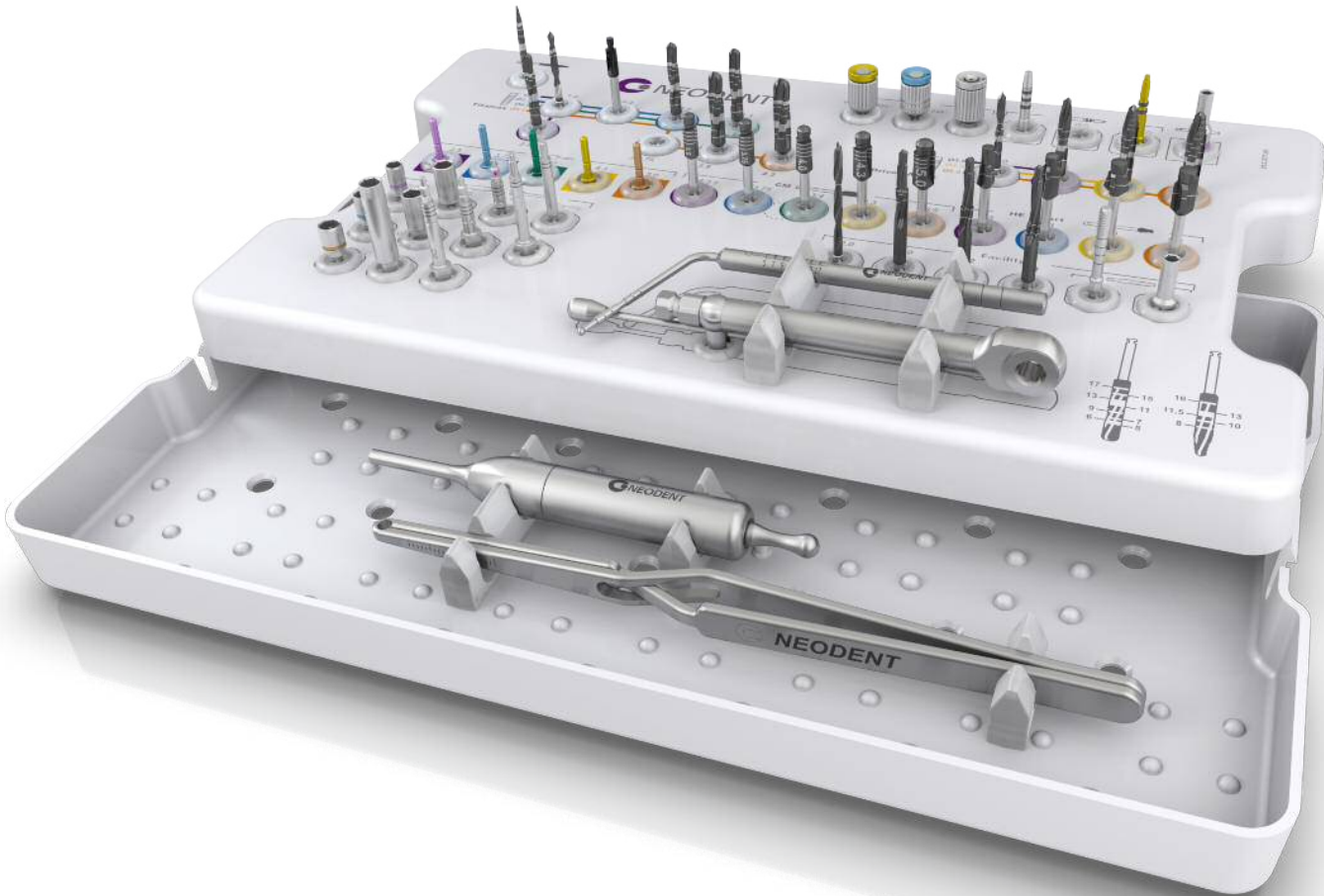
Surgical Tweezer with self implant locking and millimeter scale for reference during procedures.



# Surgical Kit

## KIT FEATURES:

:: Autoclavable polymer case.



## Articles

110.269	1	Surgical Kit Case
103.170	1	Initial Drill
103.171	1	Alvim Twist Drill 2.0
103.162	1	Twist Drill 2.0
103.213	1	Pilot Drill 2.0/3.0
103.163	1	Twist Drill 2.8
103.164	1	Twist Drill 3.0
103.166	1	Twist Drill 3.3
103.167	1	Twist Drill 3.8
103.168	1	Twist Drill 4.3
103.172	1	Alvim Drill 3.5
103.173	1	Alvim Drill 4.3
103.174	1	Alvim Drill 5.0
103.216	1	CM Pilot Drill 2.8/3.5
103.217	1	CM Pilot Drill 3.0/3.75
103.218	1	CM Pilot Drill 3.3/4.0
103.219	1	CM Pilot Drill 3.6/4.3
103.220	1	CM Pilot Drill 4.3/5.0
103.331	1	Facility Twist Drill 2.0
103.341	1	Facility Drill 10
103.342	1	Facility Drill 12
103.343	1	Facility Drill 14
111.035	1	Facility Bone Tap
105.111	1	Bone Tap Connection Facility For Torque Wrench
103.091	1	Drill Extension
105.001	1	WS Implant Driver - Torque Wrench (Short)
105.018	1	Hex Connection - Torque Wrench (Long)
105.002	1	WS Implant Driver - Contra-Angle
105.073	1	CM Implant Driver - Torque Wrench (Short)
105.074	1	CM Implant Driver - Torque Wrench (Long)
105.075	1	CM Implant Driver - Contra-Angle
105.104	1	Contra-Angle Facility Connection
105.109	1	Long Facility Connection For Torque Wrench
128.015	1	CM Height Measurer
128.027	1	Facility Height Measurer
128.019	1	Direction Indicator 2.8/3.5
128.020	1	Direction Indicator 3.0/3.75
128.021	1	Direction Indicator 3.3/4.0
128.022	1	Direction Indicator 3.6/4.3
128.023	1	Direction Indicator 4.3/5.0
104.056	1	Facility Abutment Placement Aid
104.041	1	Manual Screwdriver (Medium) 0.9 mm
104.012	1	Manual Screwdriver (Medium) 1.2 mm
104.028	1	Manual Implant Driver - Contra-Angle
104.050	1	Torque Wrench
129.004	1	Depth Probe
129.001	1	Titanium Tweezers

Note: Items that compose Neodent Kits are sold separately.



## Articles

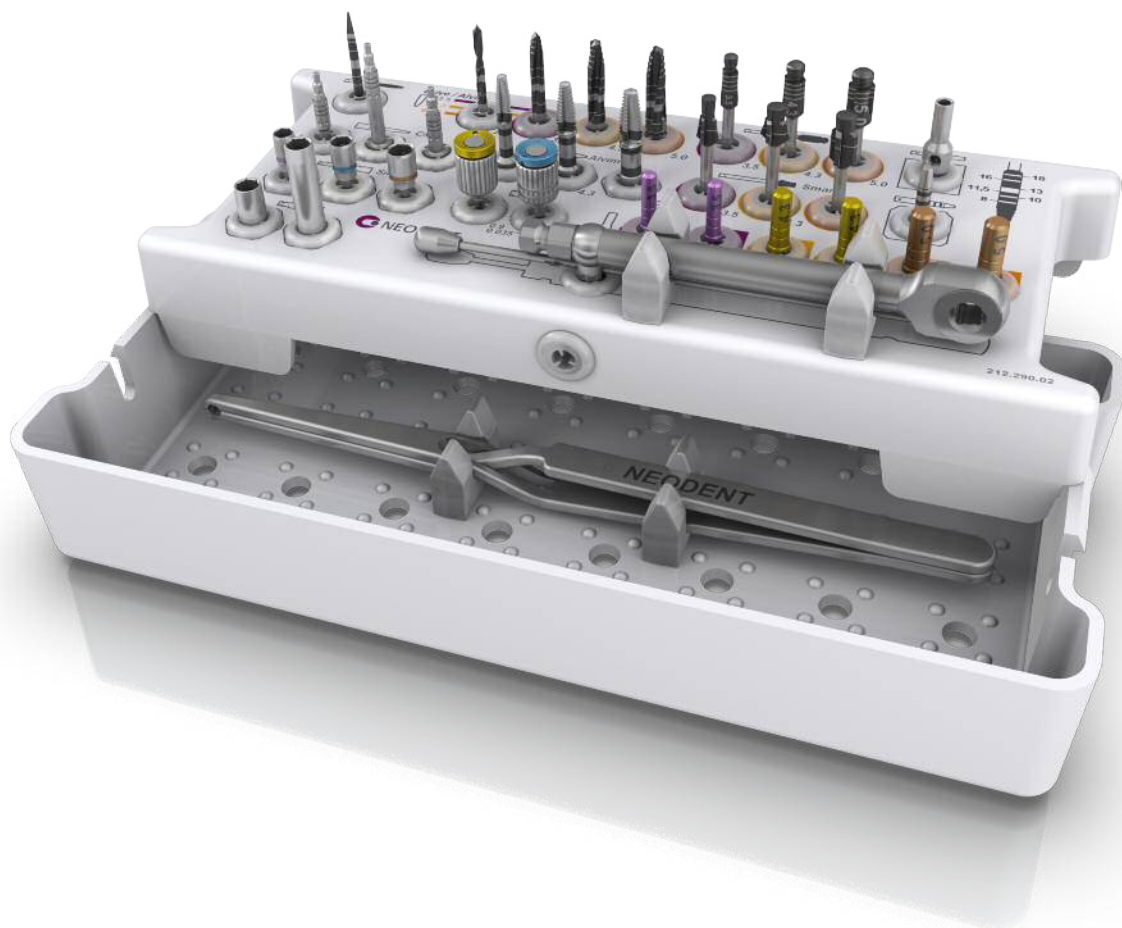
110.268	1	Compact Surgical Kit Case
103.170	1	Initial Drill
103.162	1	Twist Drill 2.0
103.213	1	Pilot Drill 2.0/3.0
103.163	1	Twist Drill 2.8
103.164	1	Twist Drill 3.0
103.172	1	Alvim Drill 3.5
103.173	1	Alvim Drill 4.3
103.216	1	CM Pilot Drill 2.8/3.5
103.217	1	CM Pilot Drill 3.0/3.75
103.219	1	CM Pilot Drill 3.6/4.3
103.091	1	Drill Extension
105.073	1	CM Implant Driver - Torque Wrench (Short)
105.074	1	CM Implant Driver - Torque Wrench (Long)
105.075	1	CM Implant Driver - Contra-Angle
128.019	1	Direction Indicator 2.8/3.5
128.020	1	Direction Indicator 3.0/3.75
128.022	1	Direction Indicator 3.6/4.3
104.041	1	Manual Screwdriver (Medium) 0.9
104.012	1	Manual Screwdriver (Medium) 1.2
104.050	1	Torque Wrench

Note: Items that compose Neodent Kits are sold separately.

# Compact Surgical Kit for Conical Implants

## KIT FEATURES:

:: Autoclavable polymer case.



## Articles

110.278	1	Compact Surgical Kit for Conical Implants
103.170	1	Initial Drill
103.171	1	Alvim Twist Drill 2.0
103.172	1	Alvim Drill 3.5
103.173	1	Alvim Drill 4.3
103.174	1	Alvim Drill 5.0
103.216	1	CM Pilot Drill 2.8/3.5
103.219	1	CM Pilot Drill 3.6/4.3
103.220	1	CM Pilot Drill 4.3/5.0
103.366	1	Countersink Drill 3.5
103.211	1	Countersink Drill 4.3
103.242	1	Countersink Drill SF 4.5/5.0
103.091	1	Drill Extension
128.019	1	Direction Indicator 2.8/3.5
128.022	1	Direction Indicator 3.6/4.3
128.023	1	Direction Indicator 4.3/5.0
104.041	1	Manual Screwdriver (Medium) 0.9
104.012	1	Manual Screwdriver (Medium) 1.2
128.015	1	CM Height Measurer
105.073	1	CM Implant Driver - Torque Wrench (Short)
105.074	1	CM Implant Driver - Torque Wrench (Long)
105.075	1	CM Implant Driver - Contra-Angle
105.115	1	Narrow Smart Implant Driver - Contra-Angle
105.116	1	Regular Smart Implant Driver - Contra-Angle
105.117	1	Wide Smart Implant Driver - Contra-Angle
105.001	1	Smart/WS Implant Driver - Torque Wrench (Short)
105.018	1	Hex Connection - Torque Wrench (Long)
111.036	1	Alvim Bone Tap 3.5
111.037	1	Alvim Bone Tap 4.3
111.038	1	Alvim Bone Tap 5.0
104.050	1	Torque Wrench
129.001	1	Titanium Tweezers

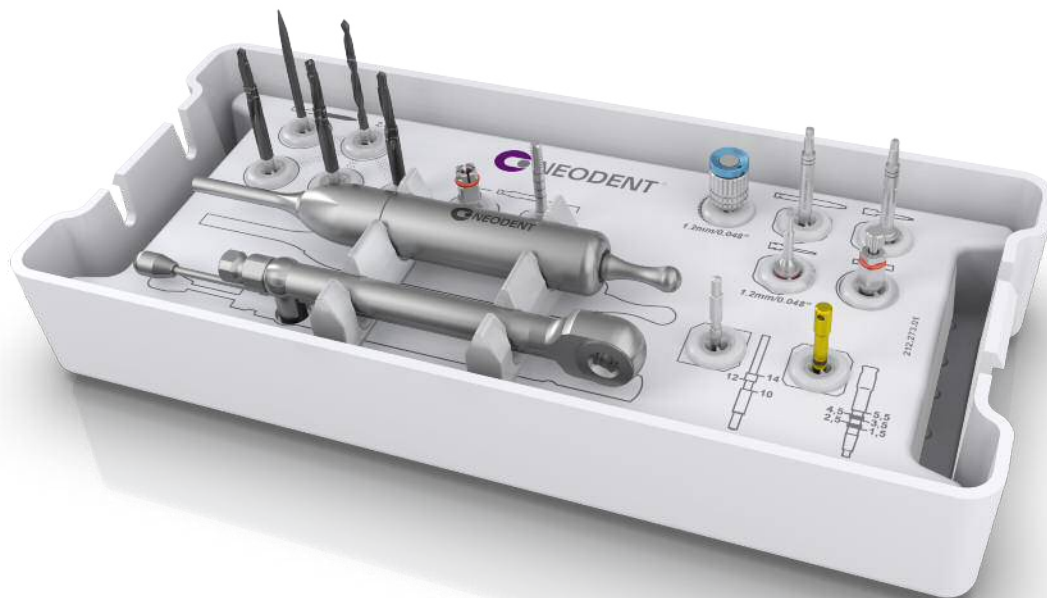
Note: Items that compose Neodent Kits are sold separately.



# Facility Kit

## KIT FEATURES:

:: Autoclavable polymer case.



## Articles

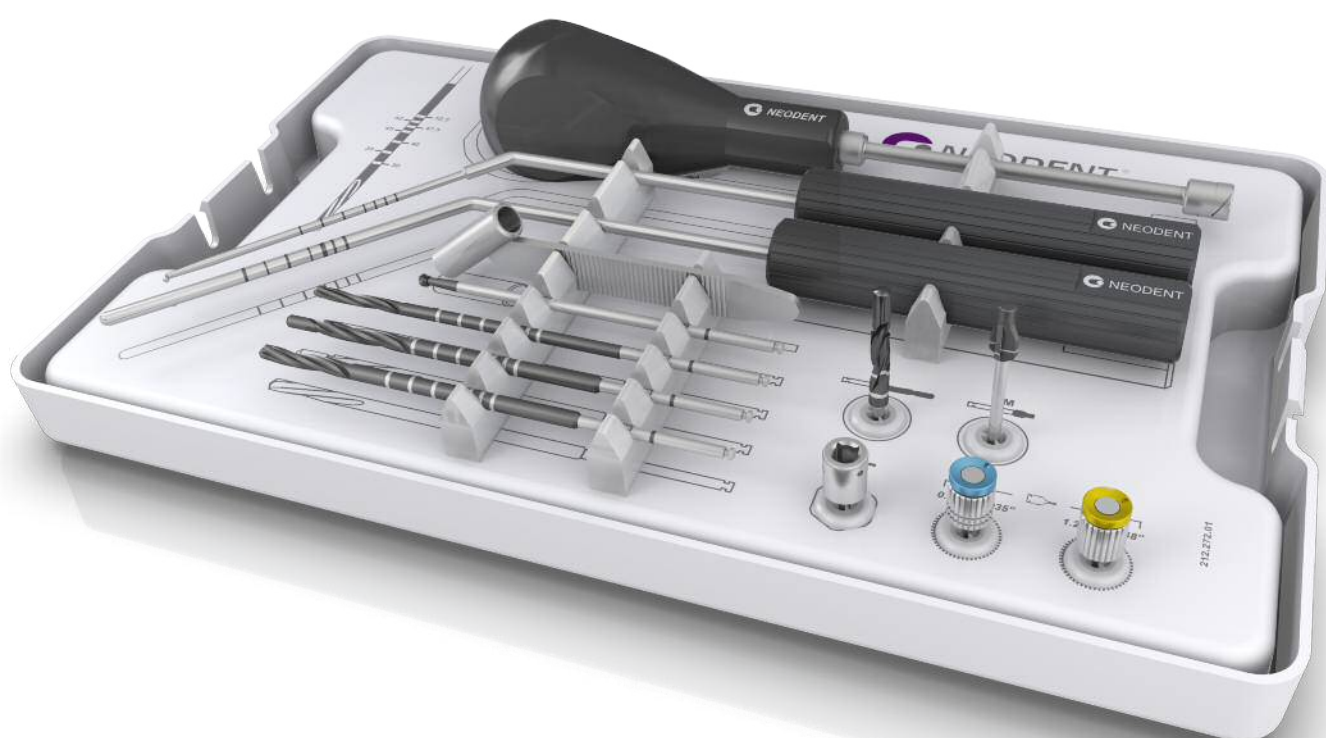
110.265	1	Facility Kit Case
103.330	1	Facility Initial Drill
103.331	1	Facility Twist Drill 2.0
103.341	1	Facility Drill 10
103.342	1	Facility Drill 12
103.343	1	Facility Drill 14
105.104	1	Contra-Angle Facility Connection
105.109	1	Long Facility Connection For Torque Wrench
105.111	1	Bone Tap Connection Facility For Torque Wrench
111.035	1	Facility Bone Tap
128.027	1	Facility Height Measurer
129.016	1	Facility X-Ray Positioner
104.050	1	Torque Wrench
104.012	1	Manual Screwdriver (Medium) 1.2
105.005	1	Hex Screwdriver Torque Connection 1.2
105.009	1	Prosthetic Abutment Driver
104.056	1	Facility Abutment Placement Aid

Note: Items that compose Neodent Kits are sold separately.

# Zygomatic Kit

## KIT FEATURES:

:: Autoclavable polymer case.



## Articles

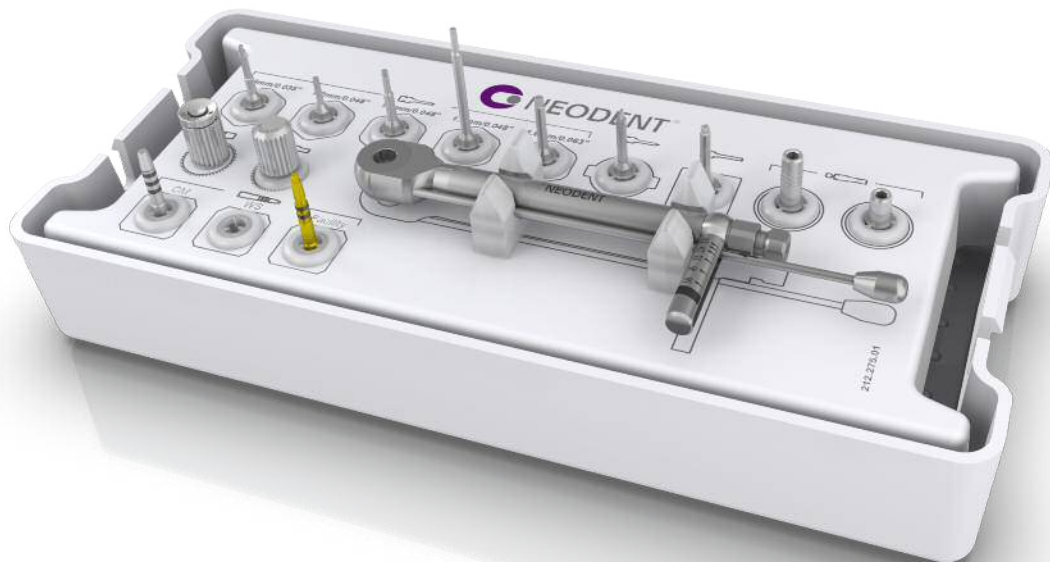
110.264	1	Zygomatic Surgical Kit Case
104.042	1	Zygomatic Installation Driver
105.067	1	Zygomatic Connection - Contra-Angle
103.190	1	Spherical Drill for Zygomatic 2.9 mm
103.191	1	Twist Drill for Zygomatic 2.7 mm
103.192	1	Pilot Twist Drill for Zygomatic 2.7/3.3 mm
103.193	1	Twist Drill for Zygomatic 3.3 mm
103.197	1	CM Countersink Drill for Zygomatic
103.208	1	Pilot Twist Drill for Zygomatic 3.3/3.7 mm
124.004	1	Zygomatic Labial Protector
129.011	1	Zygomatic Bicortical Probe
129.012	1	Zygomatic Probe
104.012	1	Manual Screwdriver (Medium) 1.2 mm
104.041	1	Manual Screwdriver (Medium) 0.9 mm

Note: Items that compose Neodent Kits are sold separately.

# Prosthetic Kit

## KIT FEATURES:

:: Autoclavable polymer case.



## Articles

110.267	1	Prosthetic Kit Case
105.065	1	Hex Screwdriver Torque Connection 0.9
105.041	1	Hex Screwdriver Torque Connection (Short) 1.2
105.005	1	Hex Screwdriver Torque Connection 1.2
105.006	1	Hex Screwdriver Torque Connection 1.6
105.007	1	Slot Screwdriver Torque Connection
105.008	1	Square Screwdriver Torque Connection
105.009	1	Prosthetic Abutment Driver
105.044	1	Prosthetic Abutment Driver (Short)
105.071	1	Torque Connection (Long) 1.2
128.015	1	CM Height Measurer
128.027	1	Facility Height Measurer
104.005	1	Manual Screwdriver Torque
104.016	1	Impression Coping Driver - Closed-Tray
104.050	1	Torque Wrench

Note: Items that compose Neodent Kits are sold separately.

# CM Try-In Kit

## KIT FEATURES:

- :: Autoclavable polymer case;
- :: Suitable for better planning of Morse Taper prosthetic components.



## Articles

110.266	1	CM Try-In Kit Case
114.191	1	CM Abutment Try-In 3.3X4x0.8
114.192	1	CM Abutment Try-In 3.3X4x1.5
114.193	1	CM Abutment Try-In 3.3X4x2.5
114.194	1	CM Abutment Try-In 3.3X4x3.5
114.195	1	CM Abutment Try-In 3.3X4x4.5
114.196	1	CM Abutment Try-In 3.3X4x5.5
114.197	1	CM Abutment Try-In 3.3X4x6.5
114.198	1	CM Abutment Try-In 3.3X6x0.8
114.199	1	CM Abutment Try-In 3.3X6x1.5
114.200	1	CM Abutment Try-In 3.3X6x2.5
114.201	1	CM Abutment Try-In 3.3X6x3.5
114.202	1	CM Abutment Try-In 3.3X6x4.5
114.203	1	CM Abutment Try-In 3.3X6x5.5
114.204	1	CM Abutment Try-In 3.3X6x6.5
114.205	1	CM Abutment Try-In 4.5X4x0.8
114.206	1	CM Abutment Try-In 4.5X4x1.5
114.207	1	CM Abutment Try-In 4.5X4x2.5
114.208	1	CM Abutment Try-In 4.5X4x3.5
114.209	1	CM Abutment Try-In 4.5X4x4.5
114.210	1	CM Abutment Try-In 4.5X4x5.5
114.211	1	CM Abutment Try-In 4.5X4x6.5
114.212	1	CM Abutment Try-In 4.5X6x0.8
114.213	1	CM Abutment Try-In 4.5X6x1.5
114.214	1	CM Abutment Try-In 4.5X6x2.5
114.215	1	CM Abutment Try-In 4.5X6x3.5
114.216	1	CM Abutment Try-In 4.5X6x4.5
114.217	1	CM Abutment Try-In 4.5X6x5.5
114.218	1	CM Abutment Try-In 4.5X6x6.5
114.219	1	CM Abutment Try-In 17° 3.3X6x1.5
114.220	1	CM Abutment Try-In 17° 3.3X6x2.5
114.221	1	CM Abutment Try-In 17° 3.3X6x3.5
114.222	1	CM Abutment Try-In 30° 3.3X6x1.5
114.223	1	CM Abutment Try-In 30° 3.3X6x2.5
114.224	1	CM Abutment Try-In 30° 3.3X6x3.5
114.230	1	WS Abutment Try-In 4.5X6x0.8
114.231	1	WS Abutment Try-In 4.5X6x1.5
114.232	1	WS Abutment Try-In 4.5X6x2.5
114.233	1	WS Abutment Try-In 4.5X6x3.5
104.012	1	Manual Screwdriver (Medium) 1.2
114.226	1	CM Anatomic Abutment Try-In 1.5
114.227	1	CM Anatomic Abutment Try-In 2.5
114.228	1	CM Anatomic Abutment Try-In 3.5
114.335	1	CM Lateral Anatomic Abutment Try-In 1.5
114.336	1	CM Lateral Anatomic Abutment Try-In 2.5
114.337	1	CM Lateral Anatomic Abutment Try-In 3.5
114.450	1	Facility Anatomic Abutment Try-In 1.5
114.451	1	Facility Anatomic Abutment Try-In 2.5
114.452	1	Facility Anatomic Abutment Try-In 3.5

Note: Items that compose Neodent Kits are sold separately