


# INNOVATION NEWS 2018.

## Orchestrated performance.



**STRAUMANN ROCKS DENTISTRY.** This time it's about scientific backgrounds of patient-centric treatment with a focus on edentulous cases, long-term success, predictable treatment outcomes and pleasing esthetics. Discover more about how we can rock dentistry together.

Some of the Straumann products and services may not be available in all countries. Please contact your country sales representative or details.

# More than creating smiles. Restoring confidence.

## TABLE OF CONTENT



### DIGITAL PERFORMANCE | 6

- CARES® IO Scanner powder-free
- C series Milling Machine for dentists
- P series 3D Printing Machines



### PROSTHETIC EFFICIENCY | 10

- Angled Solution Systems
- Variobase®, line extensions
- Soft Tissue Level Implant System
- Pre-milled Abutment Blanks
- nIce glass-ceramic



### REDUCED INVASIVENESS | 22

- BLT Ø 2.9 mm, the SmallOne
- Straumann® SLActive®

Dear reader,

We share your passion for quality and desire to achieve the best patient outcomes. Groundbreaking and evidence-based innovations are not the only reasons why you can enjoy peace of mind with us. Our highly skilled and motivated team has more than 60 years of experience in business partnering, training and education, and is dedicated to providing global support. Please find here more about our fall innovations.

Best regards  
Head of Distributor  
Sales Middle East  
Charbel Saad



#### **EDENTULOUS PATIENTS | 28**

- Pro Arch
- Novaloc® Retentive System



#### **ESTHETICS & BIOMATERIALS | 34**

- PURE Ceramic Implant System
- Biomaterials



#### **ENABLEMENT & EDUCATION | 40**

- Smart
- Young Professional Program
- Practice Growth
- Single Patient Instruments
- Surgical Motors



# DIGITAL PERFOR





# PERFORMANCE

CARES® Integrated Digital Solutions

Plug & play for labs and dentists

CARES® Integrated Digital Solutions connect carefully selected, efficient dental equipment with the latest digital technology and premium materials to provide a seamless, open and fully validated digital workflow for dental professionals. Fully orchestrating the digital dental industry leaders.

### CARES® IO Scanner Powder-Free Handpiece

Leverages the unique Multiscan Imaging™ technology to provide the same class leading ergonomics, patient comfort, and clinical access with an exceptionally small and robust handpiece (105 gram weight).

The new Powder-Free Intraoral Scanner handpiece is compatible with the original CARES® IO Cart and the new Portable CARES® Intraoral Scanner systems.



### CARES® IO Portable

CARES® Portable Intraoral Scanner has all the same performance yet in a small portable form, ideal for practices with limited space or multiple operatories. For doctors who wish or need to move their IO scanner frequently.







### CARES® C series

CARES® C series is an extremely robust and compact 4-axis wet milling and grinding equipment for in-house processing. Specially designed to provide reliable and predictable precision when milling glass ceramic and hybrid materials for a wide variety of indications. CARES® C series is equipped with intelligent 4-axis technology and improves the daily practice routine in terms of efficiency and productivity.

### CARES® P series – the new standard in speed and reliability

Specially tailored to satisfy the highest demands in medical practice and the dental laboratory: the new 3D printer generation from Straumann for professional high-speed production of certified, maximum-precision and top-quality dental products. Sturdy, reliable and suited to a wealth of applications – tomorrow's solution from the innovation leader for 3D printing in the dental field.



Discover more: [www.straumann.com/cares-digital](http://www.straumann.com/cares-digital)



## CARES® SOLUTIONS FOR DENTISTS

- Provides a fully-rounded portfolio of integrated solutions, including leading chairside scanning and milling technology, 3D printing.
- Combines interconnected software platforms, open and fully validated workflows alongside with a wide variety of materials - a true benchmark in digital dentistry.

PLANNING

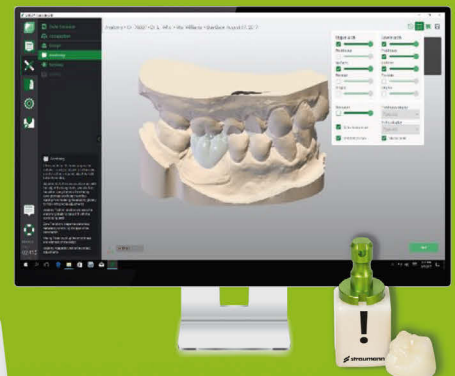
SCANNING

DESIGNING

CoDiagnostiX™



STRAUMANN® CARES®  
IO SCANNER AND  
CARES® VISUAL CHAIRSIDE



- Leverages on industry-leading partners to offer cutting-edge customizable and upgradable technology to meet your evolving needs.
- Offers Straumann service support, implants and biomaterials conveniently from a single source.

## MILLING

## 3D-PRINTING

CARES®  
P SERIESCARES®  
C SERIESCAD/CAM MATERIALS  
FOR CHAIRSIDE MILLINGDiscover more: [www.straumann.com/cares-dentists](http://www.straumann.com/cares-dentists)



# PROSTHETIC EFF





# EFFICIENCY

Straumann® Prosthetic Solutions

Performance. Partnership.  
Perfection.

Because you are passionate about performance, Straumann Prosthetic Solutions provide a cutting edge, comprehensive portfolio for all indications and workflows. Our complete range of solutions deliver flexibility, efficiency and reliability, while supporting you every step of the way. Straumann creates a supportive environment where dentists and lab technicians enjoy a close relationship built on understanding each other's needs and technical skills to provide the foundation of a trustful collaboration.



Straumann® Angled Solution Systems

# Flexibility and precision for a great performance.

What makes a great performance?

Expand your options to leverage the quality of Straumann® screw-retained restorations. With flexibility and precision from a different angle.



**original**

#### ORIGINAL

Leverage the precise fit and the quality of the original Straumann connection



#### EASY TO USE

Straightforward workflow, easy handling



#### ESTHETIC


Up to 25° of screw channel angulation. Small screw channel diameter.



#### FLEXIBLE

All indications, platforms, digital and conventional





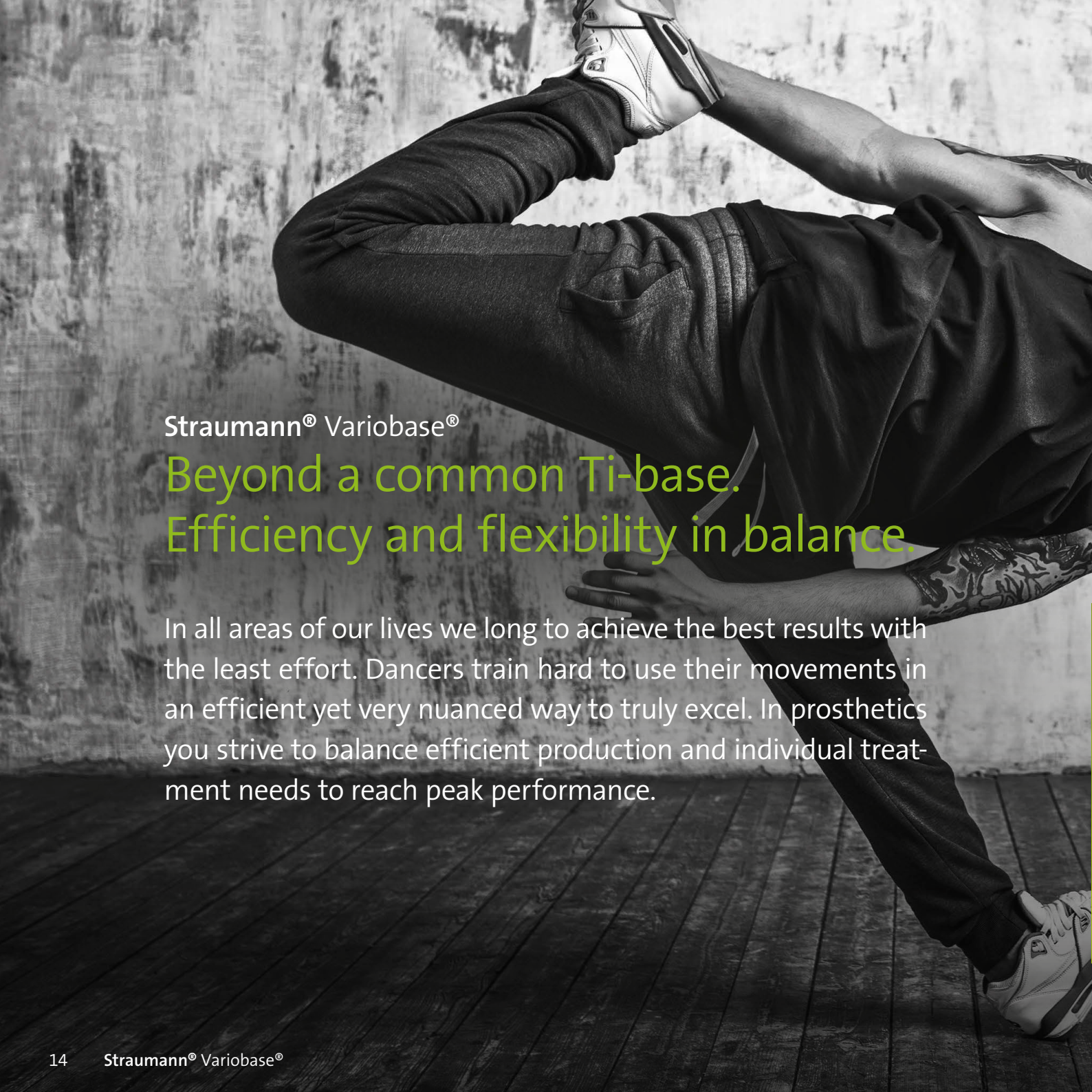
Flexibility sets the stage for a great performance. The Angled Solution Systems combine angled screw channels and a best-in-class self-retaining screwdriver. They offer treatment options for a wide variety of indications in the anterior and posterior zone and give the choice for either a conventional or digital design. Precision and attention to detail make the difference. We have refined the angled screw channel of the restoration to help achieve the best esthetic and functional outcome. No matter the implant, the screw channel can be tilted by up to 25° in all directions. Yet its diameter has been designed as small as possible in order to leave more space for a restoration. The proven Straumann conical screw connection and insertion torque of 35 Ncm provide strong retentive power.



Discover Straumann® Variobase® for Crown AS:  
[www.straumann.com/variobase-as](http://www.straumann.com/variobase-as)







Straumann® Variobase®

## Beyond a common Ti-base. Efficiency and flexibility in balance.

In all areas of our lives we long to achieve the best results with the least effort. Dancers train hard to use their movements in an efficient yet very nuanced way to truly excel. In prosthetics you strive to balance efficient production and individual treatment needs to reach peak performance.



## SATISFY INDIVIDUAL TREATMENT NEEDS IN THE MOST EFFICIENT WAY

Straumann® Variobase® is the flexible treatment concept offering an unequalled range of restorative options. From single to fully edentulous indications, from straightforward to esthetic cases, from cemented to screw-retained solutions. And you can produce all these options using your comfortable workflow routine, whether conventional or digital. Efficiency, flexibility and reliability beyond a common Ti-base.

Needs change and new requirements arise. Therefore we are constantly broadening and adapting the Variobase® portfolio. Move on to the latest Variobase® developments that focus on esthetic needs. See what's new.



The  
**NEW**

Variobase®  
family members



### EFFICIENT

One concept covers individual needs. Use your preferred workflow for design and production



### FLEXIBLE

Choose from an unequalled range of indications and materials



### RELIABLE

Rely on high quality design and the use of original Straumann components.



Discover more: [www.straumann.com/variobase](http://www.straumann.com/variobase)



#### RELIABLE

Outstanding clinical performance with unequalled precision for long-lasting success.



#### EASY-TO-USE

Straightforward workflow. Easy to place.  
Easy to restore.  
Easy to maintain.




#### VERSATILE

An adaptable solution for every clinical need and every workflow.







## Straumann® Soft Tissue Level Implant System

# Classic standard for timeless confidence.

The value of a classic standard is appreciated and shared over generations. It has proven successful innumerable times, gives peace of mind and is constantly refined by passionate people.

Unique when launched in 1997, the Straumann® Soft Tissue Level Implant System is now a true standard of excellence in dental implantology. With more than 13 million implants placed since 2003, it has become one of the best documented and most predictable implant systems on the market. A system based on timeless design, continuously reinforced by innovative developments, that deliver outstanding long-term success and results you can be confident in.

Our soft tissue level implants set the ground for reliable results. Combined with our wide choice of precision-engineered prosthetic solutions they are the perfect match for long-term success. Timeless design and prosthetic precision in harmony.



Discover our classic standard now:  
[tl.straumann.com](http://tl.straumann.com)





## Straumann® Pre-milled Abutment Blanks


# More than in-house milling. Adding value to your lab.

Produce original Straumann® one-piece customized titanium abutments with your in-house milling equipment. Boost efficiency by using your in-house milling machine and benefit from the original Straumann implant-abutment connection.



Discover more: [www.straumann.com/pre-milled-abutment-blanks](http://www.straumann.com/pre-milled-abutment-blanks)





Straumann® n!ce®

Fully crystallized glass-ceramic.  
n!ce® to meet you.





## MEET AND EXCEED PATIENT NEEDS. BENEFIT FROM ADDED CONVENIENCE AND TIME SAVING.

As its name suggests, n!ce® is pleasantly simple and very reliable. With our glass-ceramic blocks you benefit from the Straumann quality assurance, faster turn-around time and increased efficiency.

You also benefit from greater patient satisfaction, as n!ce® glass-ceramic restores your patients' natural appearance and you can count on the reliability of tooth restorations performed with a CAD/CAM material backed by the Straumann® brand. Our high-quality, fully crystallized material guarantees a precise fit with very smooth margin lines, combined with strength and longevity that feels comfortable and natural.

The n!ce® range is the new high-tech, glass-ceramic solution from Straumann® that delivers fast, esthetic restorations and meets the expectations of patients and dental professionals.



Discover more: [www.straumann.com/nice](http://www.straumann.com/nice)



# REDUCED INVA






# SIVENESS

Straumann® Bone Level Tapered Implants

Discover how the legend continues.

Who is brave enough to try?

It's not a trick. It's legendary science for more confidence and less invasiveness in your daily work. Discover the BLT 2.9 mm SmallOne and the material that makes magic possible. Every legend starts small.



Straumann® BLT 2.9 mm – the SmallOne  
Another legend is born:  
Small, strong and enduring.





The SmallOne possesses the outstanding mechanical strength of our Roxolid® material and the extensive healing potential of our SLActive® surface. This made it possible to engineer an implant with a diameter as narrow as 2.9 mm that is reliable without compromising on strength.

New prosthetic components in a unique oval design address the esthetic challenges. They provide enough space for surrounding soft tissue to achieve pleasing esthetic results in the anterior region.

With the SmallOne you can treat your patients with confidence and offer an ideal treatment solution to increase patient acceptance.



**LESS INVASIVE**

A perfect combination of shape, strength and healing power.



**NATURAL LOOKING ESTHETICS**

Novel prosthetic design that closely matches the anatomy of teeth.



**FULL STRENGTH**

A strong and reliable treatment option thanks to Roxolid®.



Get to know our new legend:  
[smallone.straumann.com](http://smallone.straumann.com)



Straumann® SLActive®

# Performance beyond imagination

MORE THAN 10 YEARS OF CLINICAL SUCCESS AND PROVEN PREDICTABILITY

## IMMEDIATE LOADING

High predictability in immediate loading.

## COMPROMISED PATIENTS

Outstanding success in compromised patient groups.

## ENHANCED BONE GRAFTING

Significantly higher formation of new bone aggregate.





# BEYOND HYDROPHILICITY

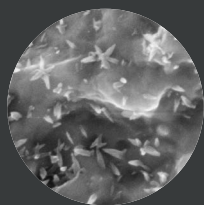
More than 10 years ago, Straumann® pioneered accelerated osseointegration with the innovative hydrophilic SLActive® surface, reducing the healing period from 6–8 down to 3–4 weeks for most indications.<sup>1</sup> Since then SLActive® implants have made faster treatment and better outcomes a reality.<sup>1</sup> The extensive healing potential of SLActive® can now be seen even in severely compromised patients and with challenging treatment protocols.<sup>2,3</sup>

Leading researchers worldwide are looking at what’s behind the outstanding clinical performance of SLActive®. As new insights emerge, recently discovered nano-structures explain why the SLActive® surface goes beyond hydrophilicity.

Discover the science of high performance.

## NEW INSIGHTS INTO SLACTIVE® SURFACE PERFORMANCE

### NANO-STRUCTURES ON SLACTIVE® SURFACE



Distinct nano-structures are present on the SLActive®, but not on the SLA® surface.<sup>4,5</sup>

### INCREASED SURFACE AREA



Nano-structures increase the SLActive® surface area by more than 50 %<sup>6</sup>

### NANO-STRUCTURES SUPPORT EARLY OSSEOINTEGRATION



In-vitro research shows that nano-structures enhance fibrin network formation and bone cell mineralisation<sup>7,8</sup>



Discover new insights about our SLActive® surface today. [Slactive.straumann.com](https://slactive.straumann.com)

# EDENTULOUS P





# PATIENTS

Straumann® Edentulous Solutions

Many reasons to smile.

Each patient is unique and therefore needs individual treatment. Straumann Edentulous Solutions provide prosthetic options and surgical protocols to treat fully edentulous patients, taking account of individual patient expectations and unique anatomic and clinical situations. Evidence-based technologies, customized training programs, and value-added services ensure a predictable outcome for each patient, every time.

# Straumann® Pro Arch Unparalleled treatment options.

The Straumann® Pro Arch for fixed edentulous restorations combines several treatment steps that reduce overall complexity without compromising outcomes, and enables personalized treatment protocols. Based on the Carames Anatomic Classification, this advanced approach takes account of patient expectations and unique anatomic and clinical situations.



## PATIENT-CENTRIC

The versatility of the Straumann Dental Implant System enables personalized treatment protocols for fully edentulous patients based on their clinical and anatomic situation.<sup>9,10</sup>

## REDUCED INVASIVENESS WITH ROXOLID®

Preserves bone, reduces complexity, and allows more treatment options with smaller implants.<sup>11,12</sup>

## HIGH PREDICTABILITY WITH IMMEDIATE LOADING WITH SLACTIVE®

Implant survival rate with immediate loading after 10 years: 98.2%.<sup>13</sup>





## PATIENT COMFORT

Less pain, less swelling, and less risk of complications with Emdogain® for wound healing.<sup>14-16</sup>

## SOLID EVIDENCE

Clinically proven and scientifically backed materials and components.



Discover more: [www.straumann.com/pro-arch](http://www.straumann.com/pro-arch)

Straumann® Novaloc®

A reliable connection  
that endures.



**SURFACE**

Carbon-based coating  
offering diamond-like  
properties



**PERFORMANCE**

Excellent material,  
delivering high wear  
resistance



**FLEXIBILITY**

Flexibility to  
compensate implant  
divergence





When durability and endurance count.

There are moments in life when you want a connection to be extremely reliable. So far hybrid denture attachment systems may have been facing their limits in challenging implant situations. Now there's Novaloc®.

The Novaloc® Retentive System for hybrid dentures offers an innovative carbon-based abutment coating ADLC (amorphous diamond-like carbon) with excellent wear resistance, overcoming up to 60° implant divergence. Both a straight and a 15° angled abutment, available in various gingiva heights, cover a broad range of clinical implant situations. Together with its durable PEEK matrices, the Novaloc® Retentive System provides a reliable connection that endures. This results in low maintenance and high patient comfort. Let your patients profit from the endurance of a reliable treatment solution.



**USABILITY**

Convenient  
component handling



**PATIENT COMFORT**

Less hassle,  
more comfort  
for your patient



**ORIGINAL**

Rely on the original  
Straumann®  
connection



Discover more: [www.straumann.com/novaloc](http://www.straumann.com/novaloc)

# ESTHETICS & BI





# OMATERIALS

Straumann® Esthetics & Biomaterials  
**Love your smile.**

Interested in the best possible esthetic outcome? Learn more about Straumann® PURE Ceramic Implant System. And ask for an exceptional range of Biomaterials. For a smile that makes you feel good.

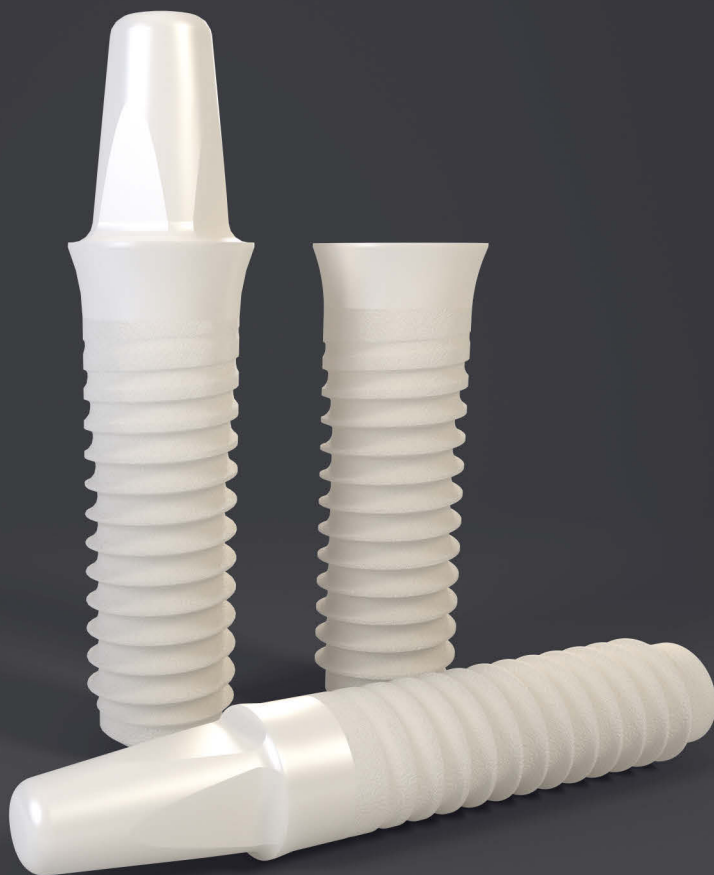


Straumann® PURE Ceramic Implant System

The natural and strong solution.  
Makes patients love their smiles.







Nothing is more winning than a light-hearted and happy smile. With the PURE Ceramic Implant System even very demanding patients can smile with confidence. Without compromising on esthetics, reliability and the most natural choice of material.

With the Straumann® PURE Ceramic Implant System you can grant the best esthetic, natural and strong treatment to your patients. They will benefit from all the highly esthetic advantages of a natural ceramic implant, ivory-colored like a natural tooth root and even in cases of thin gingiva biotypes not shining through. Yet you can rely on our high-performance zirconia ceramic material, being even stronger as the gold standard, grade-4 titanium implants.



Discover natural PURE white:  
[pure.straumann.com](https://pure.straumann.com)



#### OUTSTANDING ESTHETICS

Favorable soft tissue attachment, high-end esthetic restorations



#### PROVEN QUALITY

High performance zirconia ceramic, 100 % proof tested



#### EXCEPTIONAL SURFACE

ZLA® surface with revolutionary osseointegration features



#### FLEXIBILITY

Flexible treatment protocols, digital pre-operative implant planning



#### INNOVATIVE

A new system that helps you expand your patient pool

Decades of experience in dentistry and oral regeneration propelled us to understand and meet the diversity of needs, indications and preferences. The right solution in implantology and periodontology is designed to fit the individual. Straumann offers an exceptional range of biomaterials that meet your expectations and those of your patients. Ask for options. Contact Straumann.



Biomaterials@Straumann®

# When one option is not enough.



## FLEXIBILITY

Wide range of biomaterials to cover all indications.



## ESTHETICS

Advanced options for soft and hard tissue reconstruction. Esthetic results in all indications.



## PATIENT COMFORT

Emdogain®. Orchestrating wound healing to make oral surgery more tolerable for your patients.



## EASE OF USE

Improved handling. Tested in the hands of thousands of clinicians.



## INNOVATION

Dynamic portfolio with cutting edge technologies by dedicated research scientists.





Get to know your options:  
[www.straumann.com/biomaterials](http://www.straumann.com/biomaterials)



# ENABLEMENT &





# & EDUCATION

Straumann® Enablement & Education

Immerse to succeed.

Whether beginner or advanced – welcome to the smartest dental training from the pioneers in education and training for implant dentistry. Grow your practice and your competence and boost your dental career as Young Professional.



## CLASSROOM TRAINING

An onsite curriculum combining clinical education and practical product training tailored to the needs of starters.

## ONLINE TRAINING

A unique online education platform allowing dentists to update their knowledge 24/7.

## MENTORING

One-on-one supervision by experienced implantologists to build confidence and provide peace of mind.



# Straumann® Smart Immerse to succeed.

DISCOVER THE WORLD OF IMPLANT  
DENTISTRY WITH US.

## SIMPLE PRODUCT PORTFOLIO

Helps reduce complexity  
by initially introducing only a limited  
number of key products.

## LAB COMMUNICATION

Guidelines on when and what  
to communicate to the dental  
technician.

## PRACTICE AND PATIENT MARKETING

Training and demo materials for  
patient consultation and tools  
for online and offline practice  
marketing.

Immerse yourself in the world of implantology with Straumann® Smart. Straumann® Smart is a holistic solution specifically developed to enable dentists to successfully start and continue placing and/or restoring dental implants in straightforward patient cases. Smart is designed to help dental professionals grow their implant business quickly and with confidence.



Interested? Contact your local  
sales representative.

*For now. And forever.*

## Straumann® Young Professional Program



A program that gets under the skin.

Are you looking for a partner for life? Someone you can rely on? Someone who really has something to offer you? You've found that someone – at least in professional terms. Straumann has prepared a comprehensive service package for you, which is specially tailored to the needs of future dentists or those who have recently started their careers.



### Your benefits:

- Networking in the dental industry (experts, specialists, colleagues, ...)
- 50 % discount for Straumann education events
- Attractive partner offerings – e.g. practice location analyses , website
- Discount on ITI membership and for ITI Online academy credits
- Shadowing placement – Learning from specialists in practice
- Free planning documents to found your own practice
- Attractively priced surgical and prosthetic starter kits
- Free of charge or discounted professional literature
- Free of charge or discounted patient education tools
- Job Portal
- Constant new offers and services



Subscribe now at: [my-ypp.com](http://my-ypp.com)





## Grow your practice with Straumann® Patient Pro and Practice Marketing

For the success and a constant growth of your practice, a solid patient flow and high treatment acceptance rate are vital.

Straumann® Patient Pro is a holistic marketing solution that addresses the trends in patient information behavior\*. With our Patient Pro tools you can reach existing and prospective patients and guide them in their decision-making process towards an implant-borne solution. Further, you can motivate them to become advocates of your practice and the premium implant therapy.

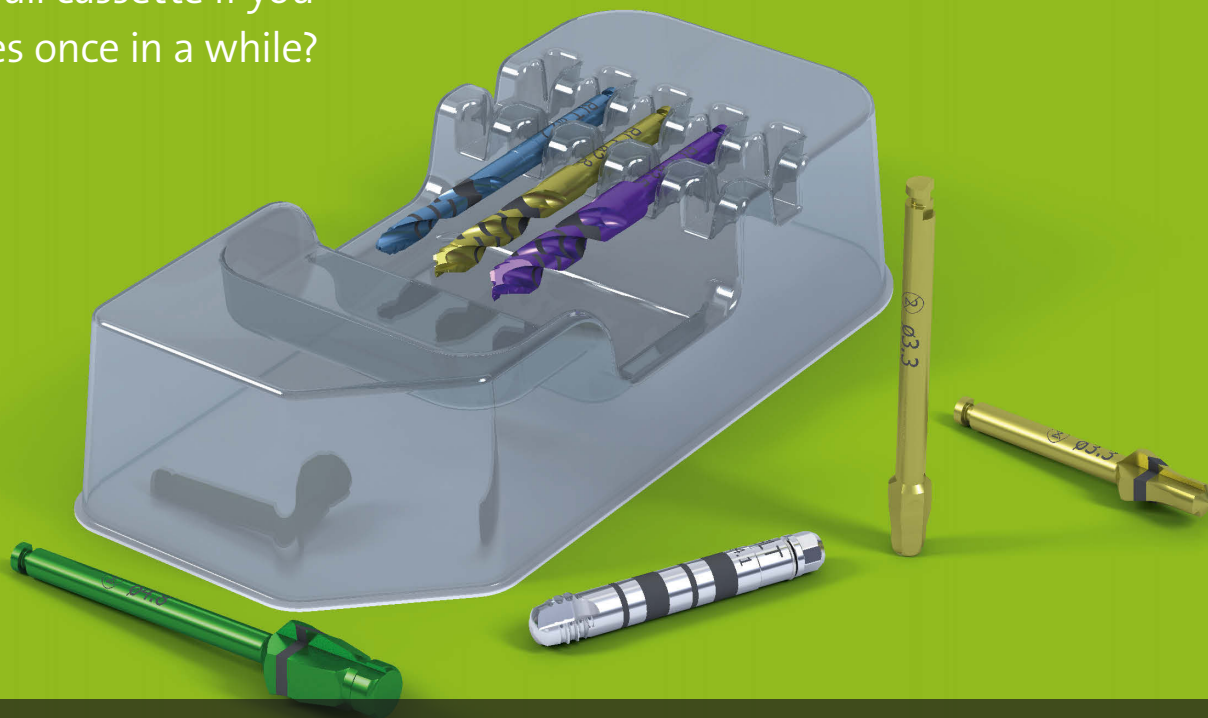
We know that you are busy with providing dental health care solutions to your patients. Initiating and maintaining practice growth measures would require additional time. To help market your practice we can therefore offer you the Practice Marketing service. Our excellent business partners can provide dedicated Straumann packages\*\* – especially for the digital media like internet and social media.

\* Already ~50% are using the internet and social media as one of their most important source.

\*\* Not available in all countries. Please contact your local Straumann representative for details.

# Straumann® Single Patient Instruments

Why buy a full cassette if you  
only do cases once in a while?



## **PAY AS YOU GO**

Single patient instruments are compatible with all Straumann implant lines.

## **ALWAYS SHARP**

Single patient drills always come sterile, sharp, ready to use.

## **VISUALIZE THE WORKFLOW**

The Straumann Single Patient Instrument Surgical User Guide is a surgical protocol printout to visualize how to use the color-coded drills.

## **FREE UP YOUR CLINIC**

Disposable instruments. to save reprocessing time and storage space.



# Straumann® Surgical Motor Pro



## STRONG

A robust motor with maximum torque value 80 Ncm, suitable for all Straumann implant types.

## SAFE

“Auto stop” function for preset torque value.  
“Torque calibration” function to ensure accurate torque output.

## SIMPLE

Large display with all information in one layer.  
Natural day light LED contra angle handpiece  
8 step x 8 implant protocol memory



Contact you sales representative for more information on these solutions.

## REFERENCES

- 1 Straumann SLActive implants compared to Straumann SLA implants. Lang NP, Salvi GE, Huynh-Ba G, Ivanovski S, Donos N, Bosshardt DD. Early osseointegration to hydrophilic and hydrophobic implant surfaces in humans. Clin Oral Implants Res. 2011 Apr;22(4):349-56. doi: 10.1111/j.1600-0501.2011.02172.x; Rupp F, Scheideler L, Olshanska N, de Wild M, Wieland M, Geis-Gerstorf J. Enhancing surface free energy and hydrophilicity through chemical modification of microstructured titanium implant surfaces. Journal of Biomedical Materials Research A, 76(2):323-334, 2006. ; De Wild M. Superhydrophilic SLActive® implants. Straumann document 151.52, 2005 ; Katharina Maniura. Laboratory for Materials – Biology Interactions Empa, St. Gallen, Switzerland Protein and blood adsorption on Ti and TiZr implants as a model for osseointegration. EAO 22nd Annual Scientific Meeting, October 17 – 19 2013, Dublin ; Schwarz, F., et al., Bone regeneration in dehiscence-type defects at non-submerged and submerged chemically modified (SLActive®) and conventional SLA® titanium implants: an immunohistochemical study in dogs. J Clin.Periodontol. 35.1 (2008): 64–75. ; Rausch-fan X, Qu Z, Wieland M, Matejka M, Schedle A. Differentiation and cytokine synthesis of human alveolar osteoblasts compared to osteoblast-like cells (MG63) in response to titanium surfaces. Dental Materials 2008 Jan;24(1):102-10. Epub 2007 Apr 27. ; Schwarz F, Herten M, Sager M, Wieland M, Dard M, Becker J. Histological and immunohistochemical analysis of initial and early osseous integration at chemically modified and conventional SLA® titanium implants: Preliminary results of a pilot study in dogs. Clinical Oral Implants Research, 11(4): 481-488, 2007. Raghavendra S, Wood MC, Taylor TD. Int. J. Oral Maxillofac. Implants. 2005 May–Jun;20(3):425–31. 9 Oates TW, Valderama P, Bischof M, Nedir R, Jones A, Simpson J, Toutenburg H, Cochran DL. Enhanced implant stability with a chemically modified SLA® surface: a randomized pilot study. Int. J. Oral Maxillofac. Implants. 2007;22(5):755–760. 2 Nicolau P, Guerra F, Reis R, Krafft T, Benz K, Jackowski J 10-year results from a randomized controlled multicenter study with immediately and early loaded SLActive implants in posterior jaws. Accepted for oral presentation at 25th Annual Scientific Meeting of the European Association of Osseointegration – 29 Sep – 1 Oct 2016, Paris. 3 Nelson, K., Stricker, A., Raguse, J.-D. and Nahles, S. (2016), Rehabilitation of irradiated patients with chemically modified and conventional SLA implants: a clinical clarification. J Oral Rehabil, 43: 871–872. doi:10.1111/joor.12434 4 Kopf BS, Ruch S, Berner S, Spencer ND, Maniura-Weber K. 2015. The role of nanostructures and hydrophilicity in osseointegration: In-vitro protein-adsorption and blood-interaction studies. J Biomed Mater Res Part A 2015:103A:2661–2672. 5 Wennerberg A, Jimbo R, Stübinger S, Obrecht M, Dard M, Berner S. Nanostructures and hydrophilicity influence osseointegration – A biomechanical study in the rabbit tibia. Clin. Oral Impl. Res. 25, 2014, 1041–1050doi: 10.1111/clr.12213 6 Straumann (2017) Developed area ratio by nanostructures on Rxd modMA surface. Report SR0748. Unpublished data 7 Müller E, Rottmar M, Guimond S, Tobler U, Stephan M, Berner S, Maniura K The interplay of surface chemistry and (nano-)topography defines the osseointegrative potential of Roxolid® dental implant surfaces. eCM Meeting Abstracts 2017, Collection 3; SSB+RM (page 31). 8 EMPA (2017) Report additional experiments: Impact of RXD SLA, RXD SLAnano, RXD SLActive, and RXD pmod SLA surfaces on protein adsorption, blood coagulation, and osteogenic differentiation of HBCs. Final report: Impact of RXD SLA, RXD SLAnano, RXD SLActive, and RXD pmod SLA surfaces on protein adsorption, blood coagulation, and osteogenic differentiation of HBCs. EMPA, Swiss Federal Laboratories for Materials Science and Technology (data on file). 9 Calvo-Guirado JL, Lopez Torres JA, Dard M, Javed F, Perez-Albacete Martinez C, Mate Sanchez de Val JE. 'Evaluation of extrashort 4-mm implants in mandibular edentulous patients with reduced bone height in comparison with standard implants: a 12 month results'. Clin Oral Impl Res 27, 2016, 867-874. 10 Piano S, Romeo E, Sbriccoli L, Pisoni G, Cea N, Lops D. 'Simplified procedure for the immediate loading of a complete fixed prosthesis supported by four implants in the maxillary jaw: a 2-year prospective study'. Clin. Oral Impl. Res. 00, 2015, 1-7. 11 Müller F et al. Small-diameter titanium grade IV and titanium-zirconium implants in edentulous mandibles: five-year results from a double-blind, randomized controlled trial. (2015). BMC Oral Health. 2015 Oct 12;15(1):123. 12 Al-Nawas B, Domagala P, Fragola G, Freiburger P, ^ Ortiz-Vigón A, Rousseau P, Tondela J. 'A prospective non-interventional study to evaluate survival and success of reduced diameter implants made from titanium-zirconium alloy'. J Oral Impl, submitted. PMID:24666383. 13 Nicolau P, Guerra F, Reis R, Krafft T, Benz K, Jackowski J 10-year results from a randomized controlled multicenter study with immediately and early loaded SLActive implants in posterior jaws. Presented at 25th Annual Scientific Meeting of the European Association of Osseointegration – 29 Sep – 1 Oct 2016, Paris. 14 Tonetti MS, Fourmouls I, Suvar J, Cortellini P, Brägger U, Lang NP 'Healing, post-operative morbidity and patient perception of outcomes following regenerative therapy of deep intrabony defects'. European Research Group on Periodontology (ERGOPERIO). J Clin Periodontol. 2004 Dec;31(12):1092-8. 15 Arweiler NB, Auschill TM, Donos N, Sculean A. 'Antibacterial effect of an enamel matrix protein derivative on in vivo dental biofilm vitality'. Clin Oral Investig. 2002 Dec;6(4):205-9. Epub 2002 Nov 14 16 Wennström JL, Lindhe J. 'Some effects of enamel matrix proteins on wound healing in the dento-gingival region'. J Clin Periodontol. 2002 Jan;29(1):9-14.



### International Headquarters

Institut Straumann AG  
Peter Merian-Weg 12  
CH-4002 Basel, Switzerland  
Phone +41 (0)61 965 11 11  
Fax +41 (0)61 965 11 01  
[www.straumann.com](http://www.straumann.com)

© Institut Straumann AG, 2018. All rights reserved.  
Straumann® and/or other trademarks and logos from Straumann® mentioned herein are the trademarks or registered trademarks of Straumann Holding AG and/or its affiliates.