

STRAUMANN® iEXCEL

# CLINICAL CASE REPORT

**LOWER MOLAR TOOTH REPLACEMENT  
IN HEALED SITE WITH STRAUMANN TLC**

**BY ALESSANDRO PERUCCHI / CRISTIAN SCOGNAMIGLIO, SWITZERLAND**

# LOWER MOLAR TOOTH REPLACEMENT IN HEALED SITE WITH STRAUMANN TLC

A CLINICAL CASE REPORT BY ALESSANDRO PERUCCHI / CRISTIAN SCOGNAMIGLIO, SWITZERLAND

## EXPERT



**Alessandro Perucchi**  
Switzerland



**Cristian Scognamiglio**  
Switzerland

## DETAILS

### ALESSANDRO PERUCCHI

- DDS, Specialist in dental surgery.
- Graduated in Dental Medicine in 2005 in Bern.
- In 2011 he qualified as a Specialist in dental surgery.
- Opened his own dental clinic in 2012 in Mendrisio. Since 2007, he has acted as a speaker at universities and training courses across Switzerland and Europe.
- Author of several scientific publications.
- Member of SSO, EAO, ITI and founder of MINEC.

### CRISTIAN SCOGNAMIGLIO

- DDS, Graduated in dentistry from University of Varese (Italy in 2018)
- Clinician at the Dr. Alessandro Perucchi Private Dental Clinic from 2020 and from 2022 collaborator for oral surgery at “Studio Vanini”, both in Switzerland.
- Speaker for national and international courses.
- Active member of SSO (Swiss Dental Association), DDS (Digital Dentistry Society), EAO (European association for Osseointegration), ITI (International Team for Implantology) and OMDCT (Canton Ticino Dental Association).



# LOWER MOLAR TOOTH REPLACEMENT IN HEALED SITE WITH STRAUMANN TLC

A CLINICAL CASE REPORT BY ALESSANDRO PERUCCHI / CRISTIAN SCOGNAMIGLIO, SWITZERLAND

## DETAILS

### Patient Information

Gender	F
Age	67
Jaw	Mandible
Health status	Good
Bone type	Type 2
Local infection	No
Anatomical defects	No
Risk factors	Smoker

### Initial Situation



Intraoral situation of right lower quadrant



CBCT analysis reveals available bone before implantation

### Treatment Planning

- Digital planification to establish an implant prosthetically-driven position.
- Free-hand surgery.
- Placement of apically tapered implant Straumann® TLC®  
Ø 4.5mm x 10mm SLActive® Roxolid®.
- Primary stability more than 45 Ncm.
- After 14 weeks, delivery of the digitally fabricated screw-retained crown.

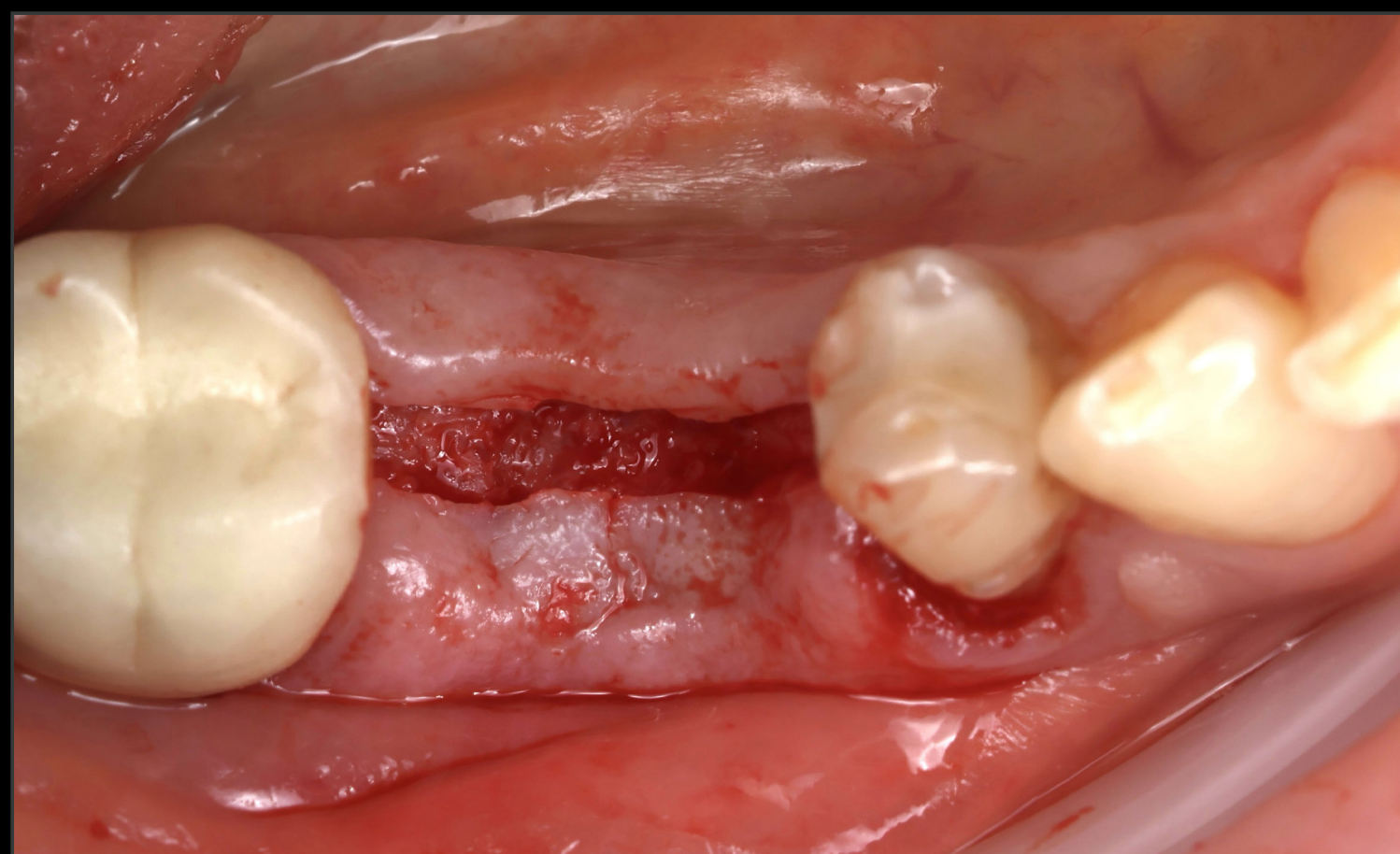


# LOWER MOLAR TOOTH REPLACEMENT IN HEALED SITE WITH STRAUMANN TLC

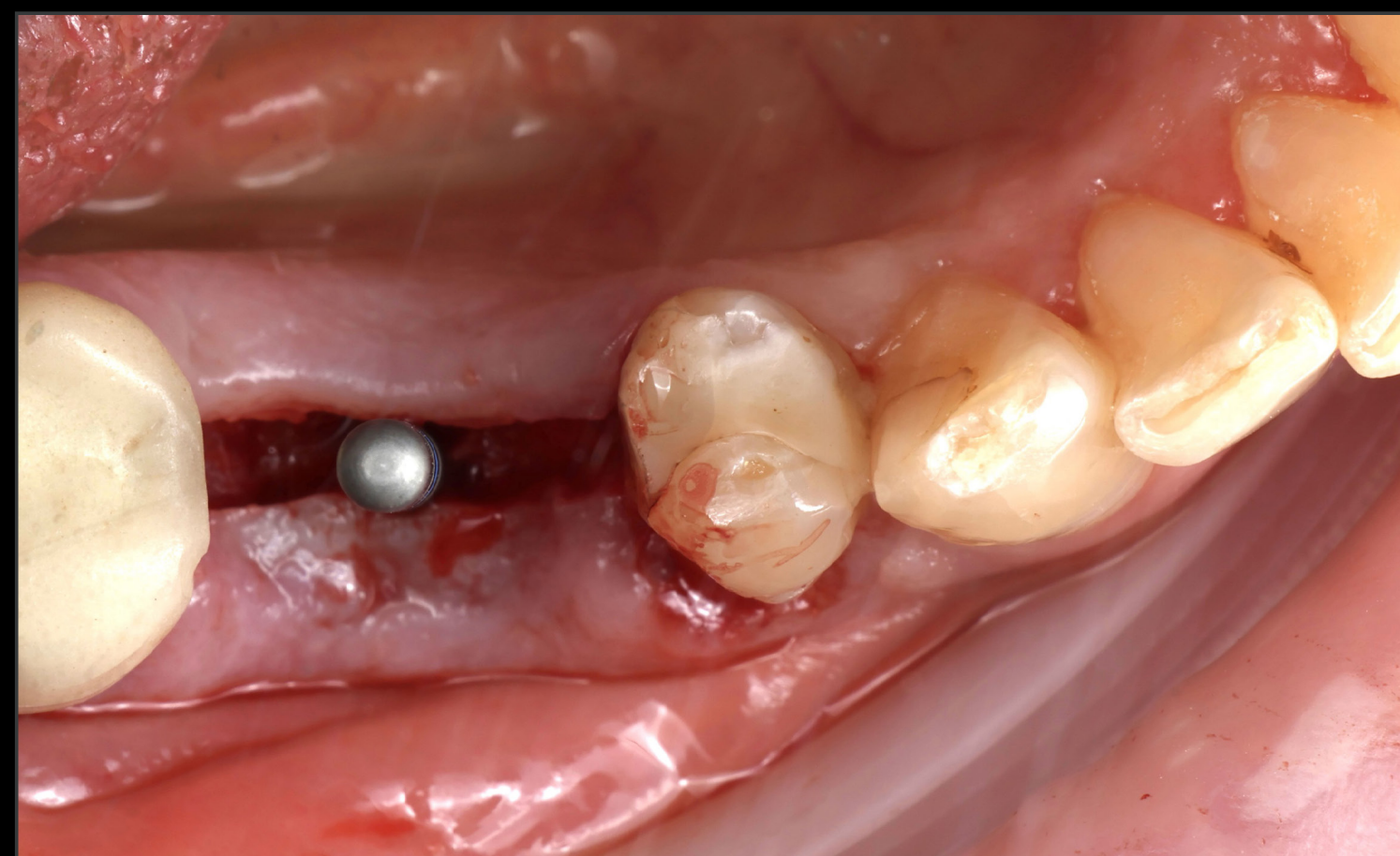
A CLINICAL CASE REPORT BY ALESSANDRO PERUCCHI / CRISTIAN SCOGNAMIGLIO, SWITZERLAND

## DETAILS

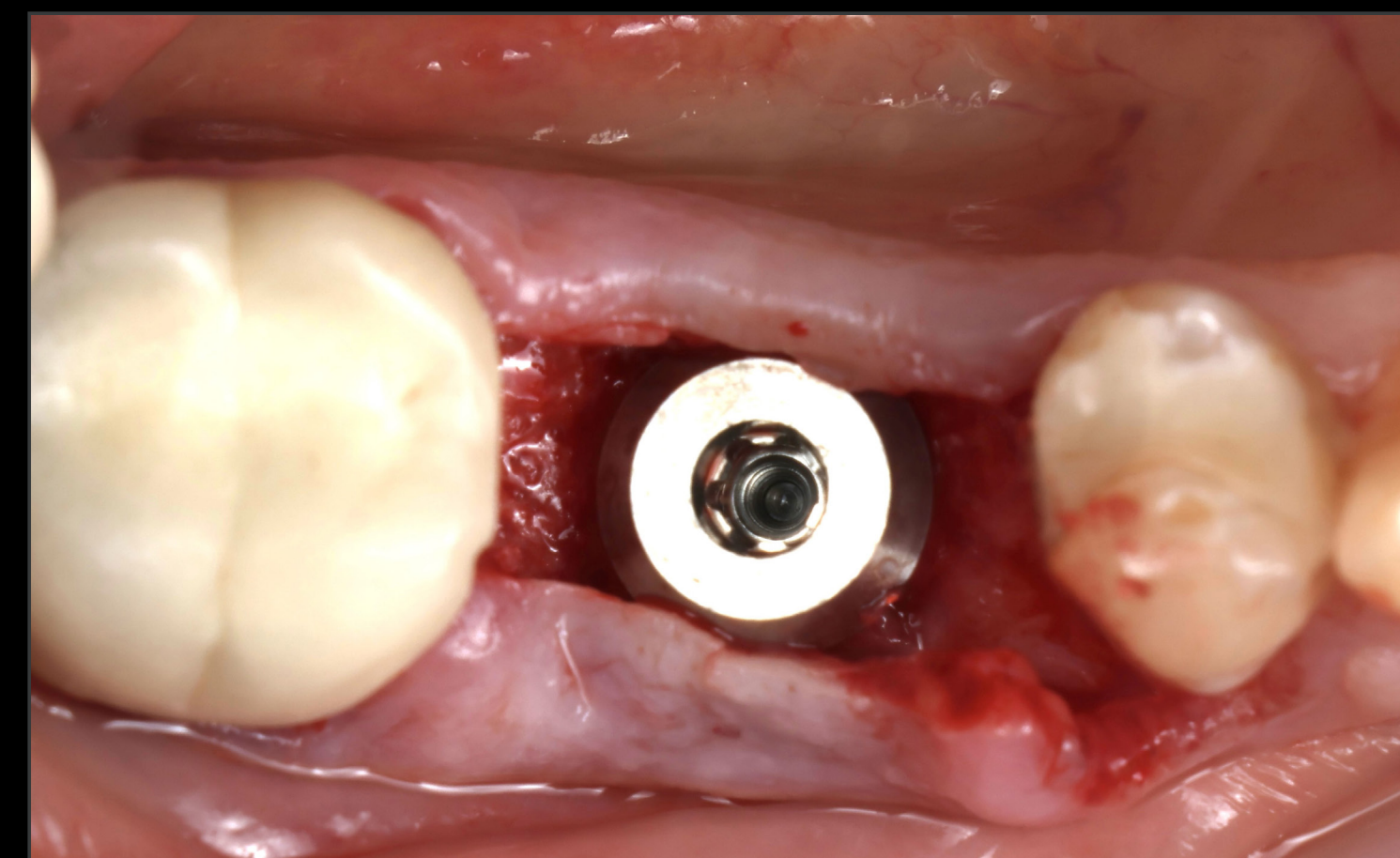
### Surgical & Prosthetic Procedures



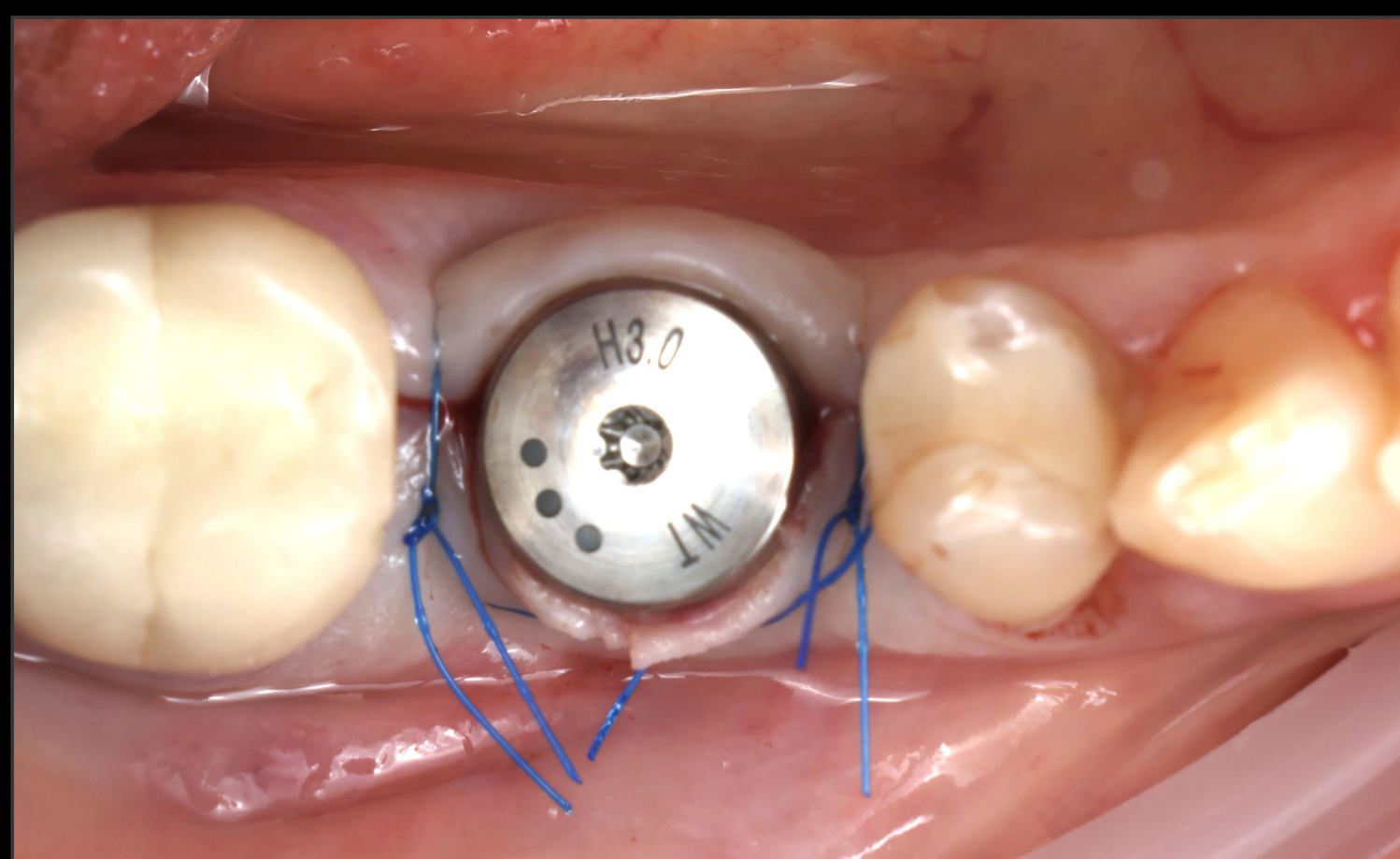
Full-thickness flap was raised to allow access to the bone and evaluate the local anatomy



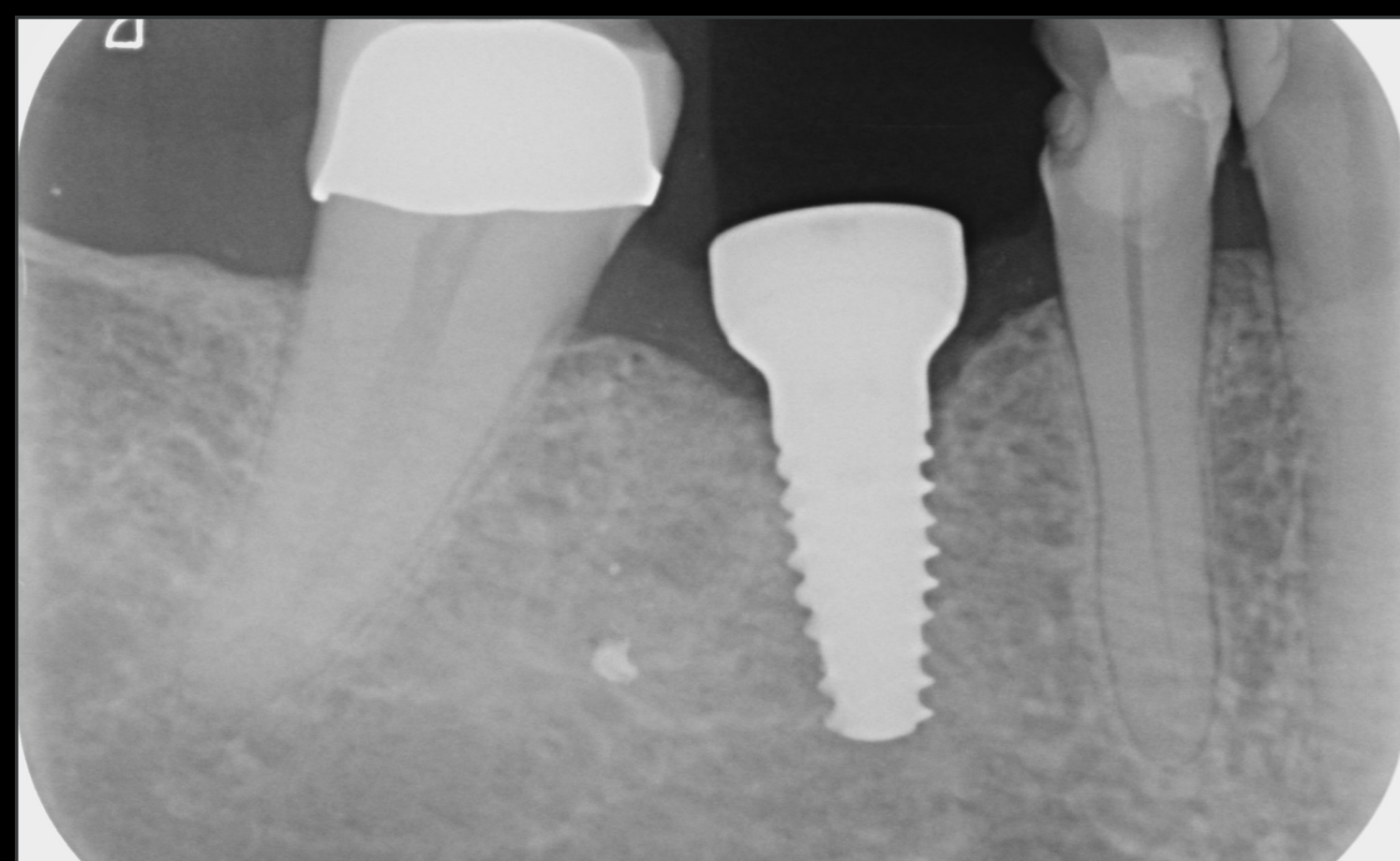
Alignment pin placed to check the 3D position of the osteotomy and preparation depth



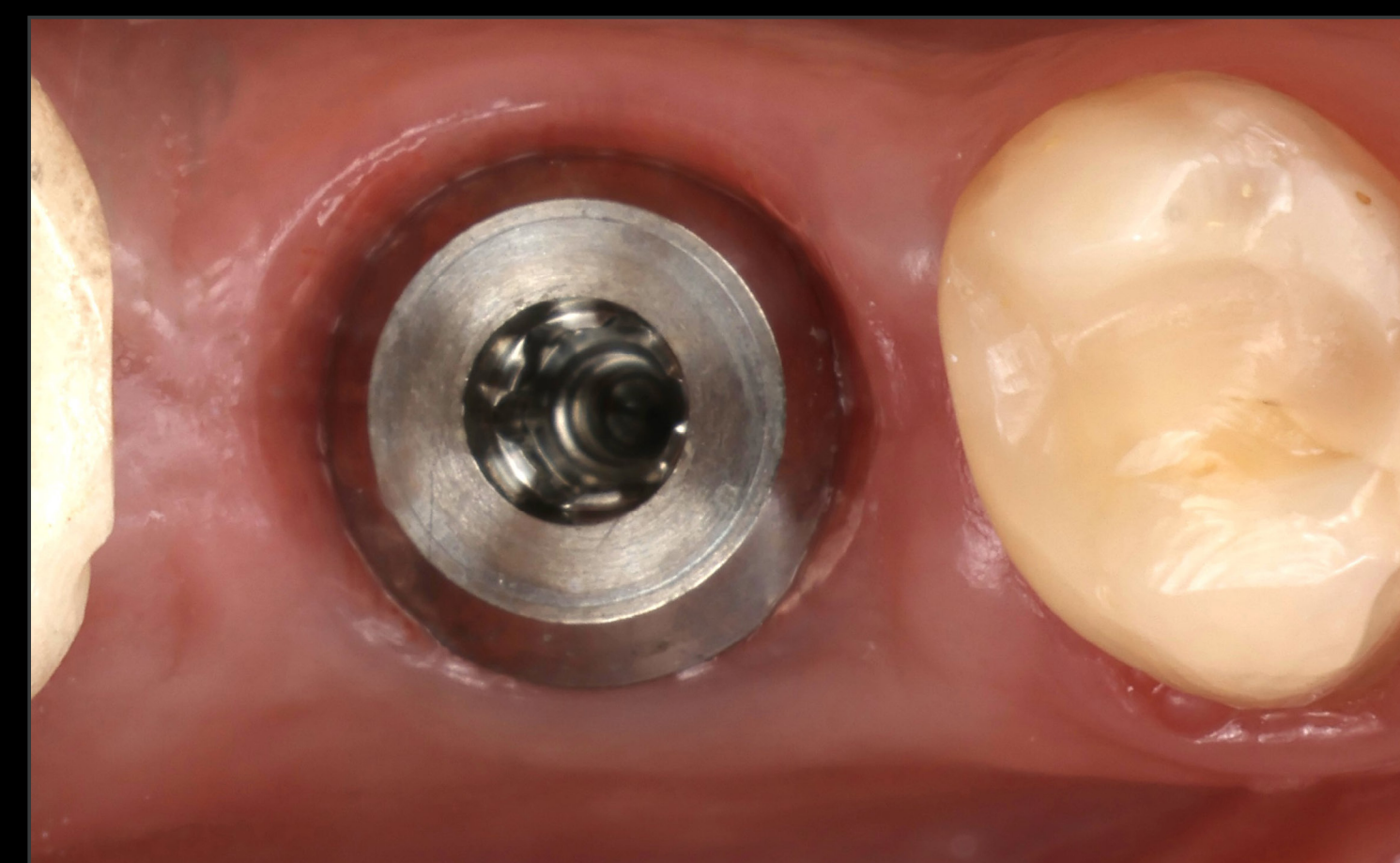
Implant in final position



Healing abutment in place



Radiographical control after insertion of dental implants



14 weeks soft tissue healing



# LOWER MOLAR TOOTH REPLACEMENT IN HEALED SITE WITH STRAUMANN TLC

A CLINICAL CASE REPORT BY ALESSANDRO PERUCCHI / CRISTIAN SCOGNAMIGLIO, SWITZERLAND

## DETAILS

### Surgical & Prosthetic Procedures



Scanbody for digital impression



Definitive screw-retained crown



Final customized restoration cemented extra orally



Definitive screw-retained crown in position



# LOWER MOLAR TOOTH REPLACEMENT IN HEALED SITE WITH STRAUMANN TLC

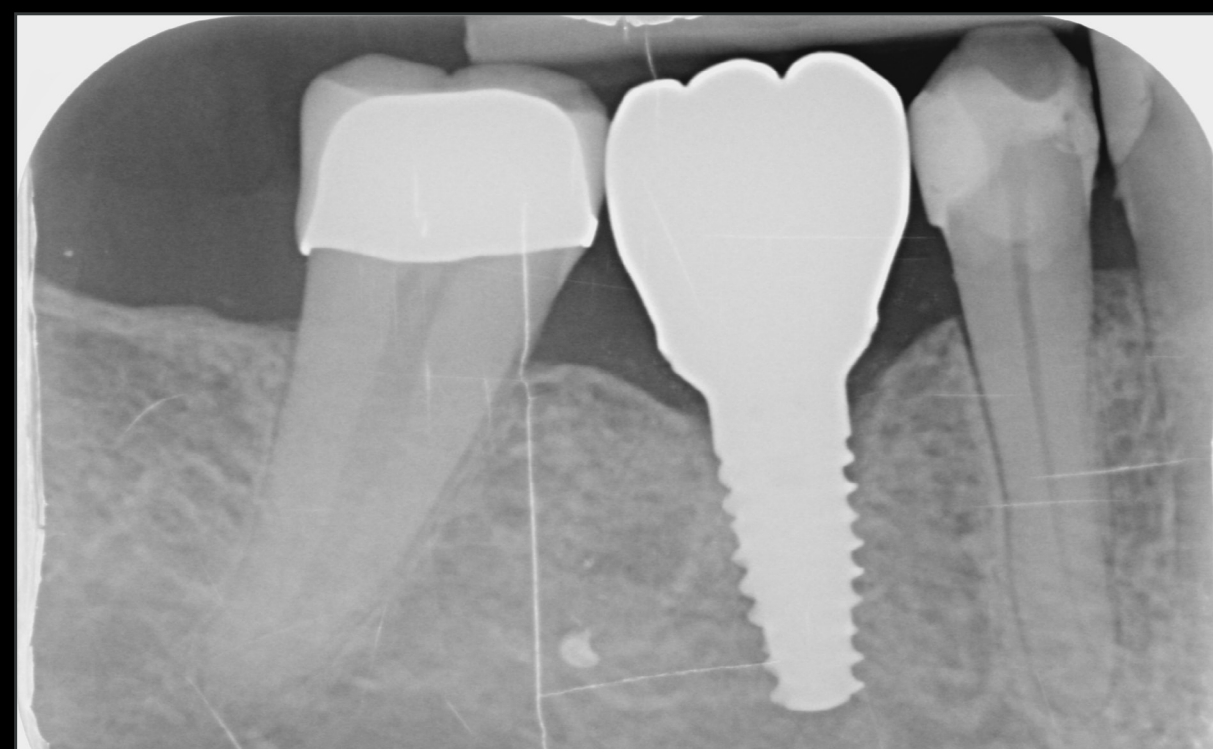
A CLINICAL CASE REPORT BY ALESSANDRO PERUCCHI / CRISTIAN SCOGNAMIGLIO, SWITZERLAND

## DETAILS

### Treatment Outcome



Final screw-retained crown in position



Radiographic control. Final crown cemented to Variobase® abutment screw-retained in final position

### Alessandro Perucchi & Cristian Scognamiglio

*“In this implant we found a great innovation, we have the same connection of the BLX and the BLC, we can use the same kit and at the same time we can have a really high primary stability, the primary stability is something that we have noticed with TLC, we are users of the classic Straumann Standard Plus Tissue Level but this new version it’s really great thanks to the macro-geometry because we are able to reach high primary stability and a predictable success.”*

### Before



### After 14 weeks

