

STRAUMANN® iEXCEL

# CLINICAL CASE REPORT

**IMMEDIATE MAXILLARY FULL-ARCH  
WITH DIGITAL WORKFLOW WITH STRAUMANN BLC**

**BY ANDRE CHEN, PORTUGAL**

# IMMEDIATE MAXILLARY FULL-ARCH WITH DIGITAL WORKFLOW WITH STRAUMANN BLC

A CLINICAL CASE REPORT BY ANDRE CHEN, PORTUGAL

## EXPERT



**Andre Chen**  
Portugal

## DETAILS

- Co-founder International Advanced Dentistry IAD
- Oral Surgery Specialist – OMD College of Portugal
- Doctor in Oral Surgery and Medicine (PhD)
- Oral Surgery Post-Graduate Course (2008–2011, FMDUL Lisbon)
- NYU College of Dentistry, Implant Dentistry Alumni (2006–2008, New York)
- NYU Continuing Education Oral Rehabilitation Program (2004–2006, New York)
- Clinical Dental Research Program (2012, Washington University, Seattle)
- Master of Science in Bone Regeneration (MSc, FMDUL Lisbon)
- Graduated in Dentistry at FMDUL, Lisbon University
- Oral Surgery and Implant Dentistry Faculty, FMDUL since 2004



# IMMEDIATE MAXILLARY FULL-ARCH WITH DIGITAL WORKFLOW WITH STRAUMANN BLC

A CLINICAL CASE REPORT BY ANDRE CHEN, PORTUGAL

## DETAILS

### Patient Information

Gender	F
Age	62
Jaw	Maxilla
Health status	Healthy
Bone type	IV
Local infection	No
Anatomical defects	No
Risk factors	None

### Initial Situation



Initial intraoral situation of both arches



CBCT analysis reveals teeth status and available bone before implantation

### Treatment Planning

- Patient with a story of Crown and bridge work, non-aesthetic, with recurrent decay, fractures and root remnants
- Digital Smile design with Smilecloud and treatment planning with CoDiagnostiX®
- 2 guides were produced – One (tooth supported) guide to anchor the palatal pins and the other (Palatal-Pin supported) to use those pins for a Pilot drill procedure
- Placement of 4 apically tapered implant Straumann® BLC® Ø 3.75 × 12 mm SLActive® Roxolid® (#22, #12, #14, #24) and 2 Straumann® BLC® Ø 3,75 × 14 BLC (#26, #16)
- Immediate provisional fixed restoration delivered



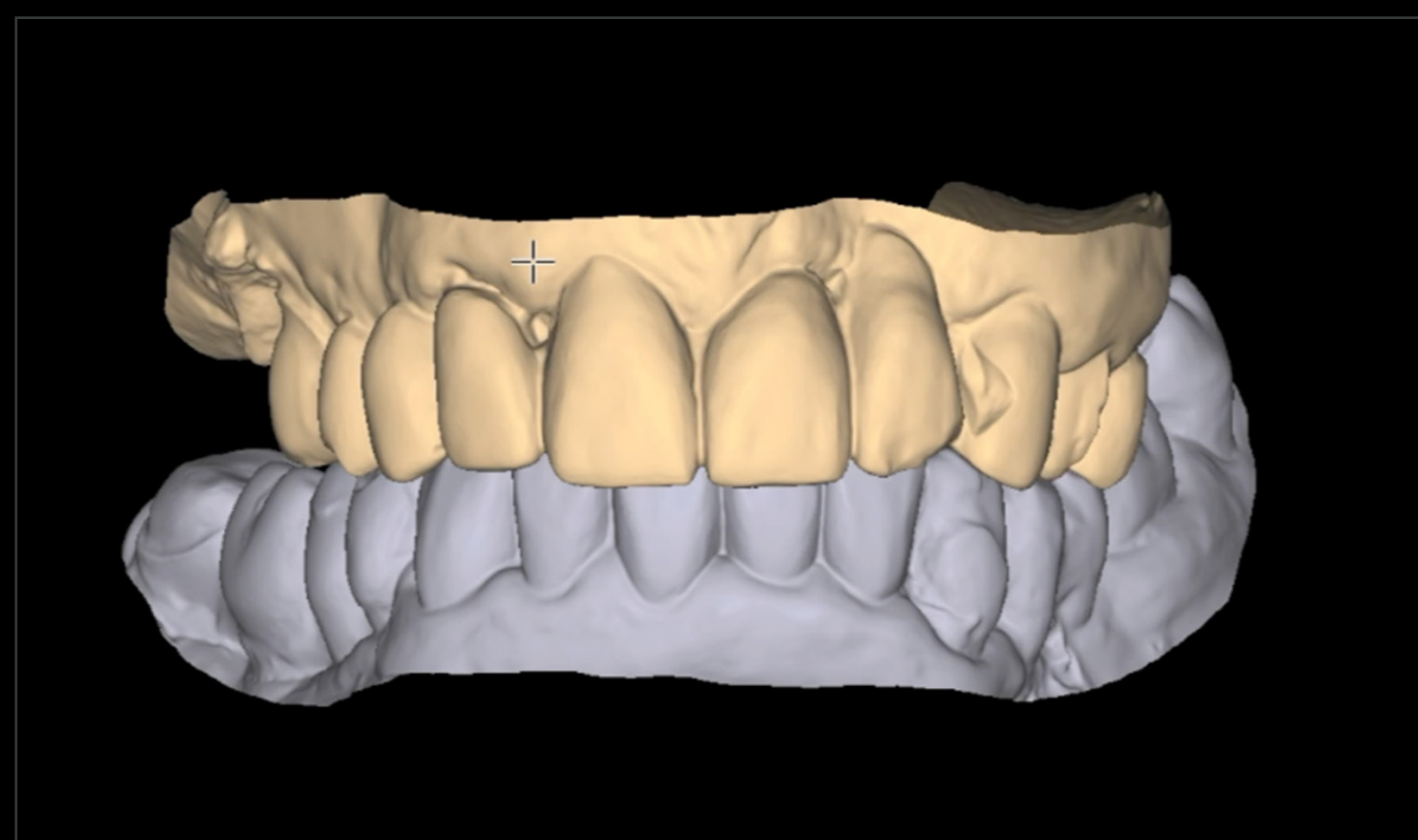
# IMMEDIATE MAXILLARY FULL-ARCH WITH DIGITAL WORKFLOW WITH STRAUMANN BLC

A CLINICAL CASE REPORT BY ANDRE CHEN, PORTUGAL

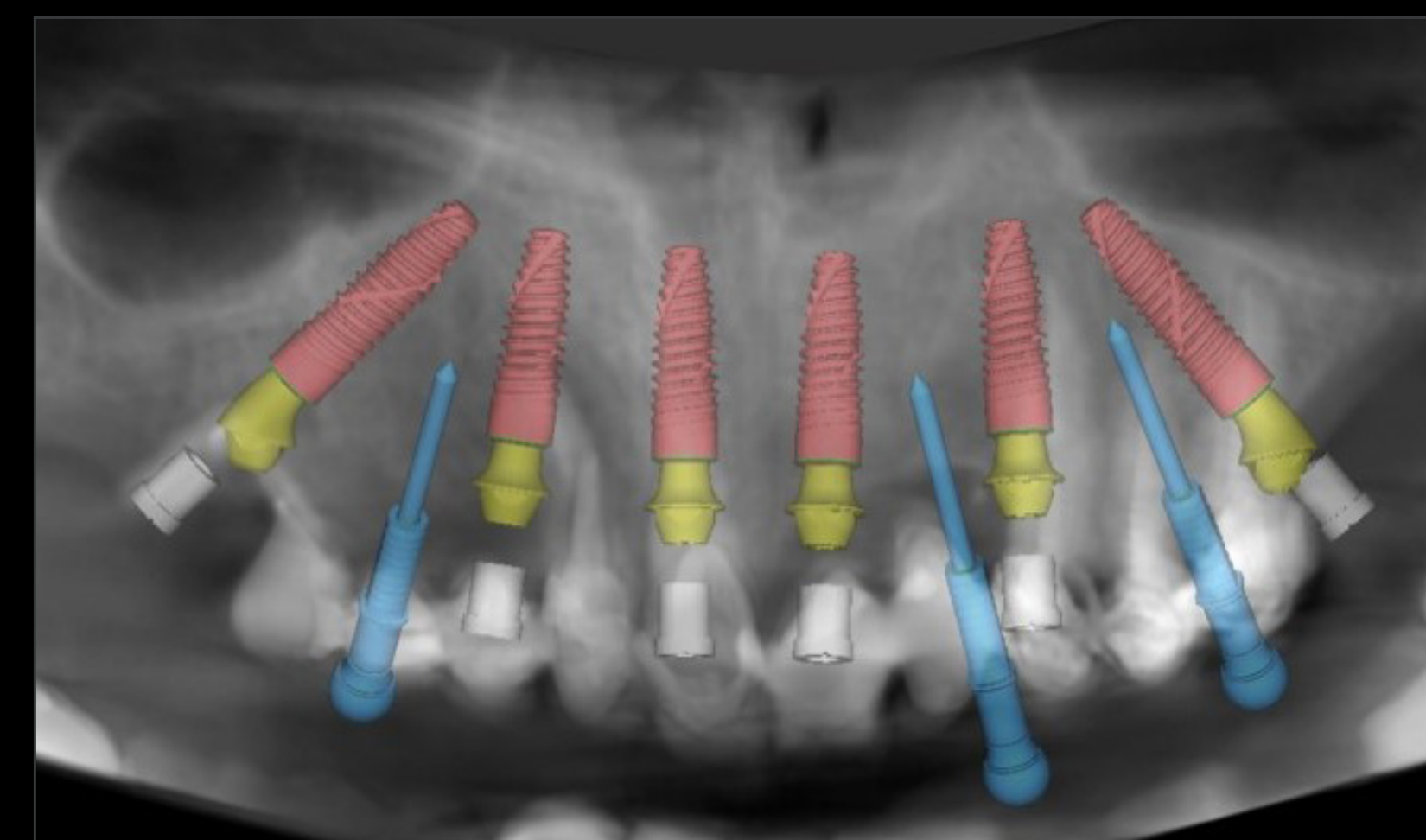
## DETAILS



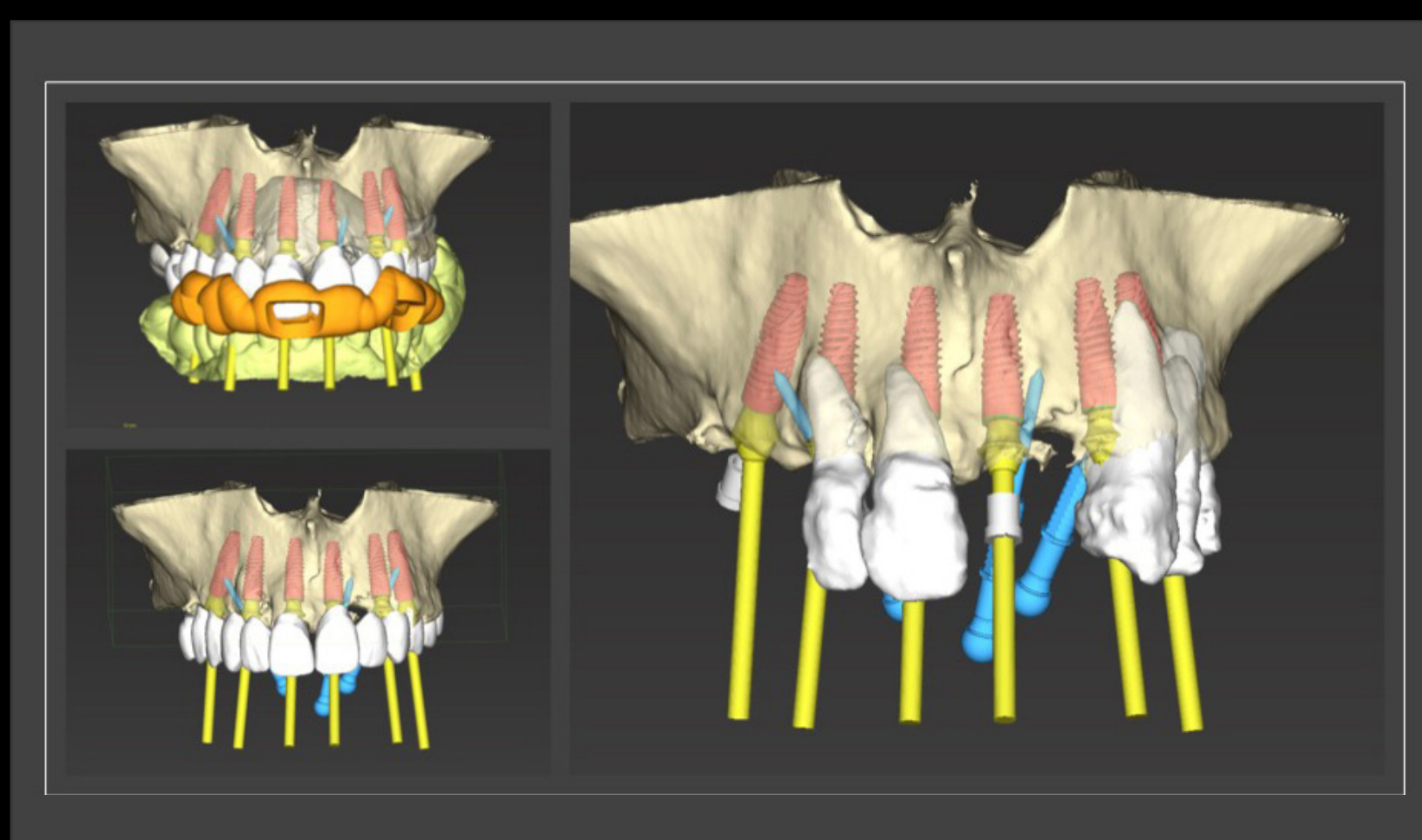
Digital smile design using Smilecloud.



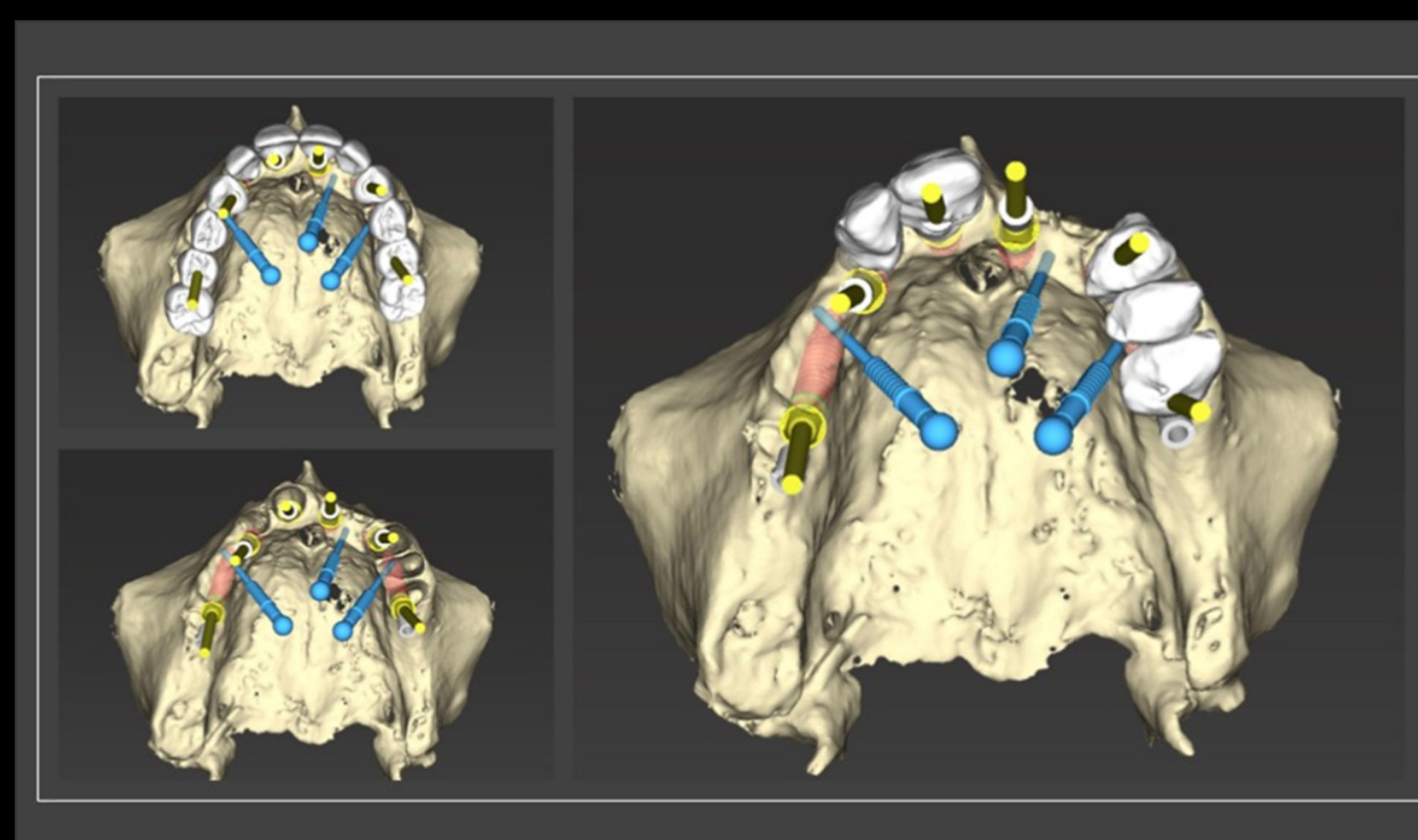
3D virtual impression position between arches.



Implant and abutment final position during digital planning with coDiagnostiX®.



Full-arch digital planning in the maxilla. Alignment of implants' positions and surgical guide 3D position.



Occlusal view of full-arch digital planning with BLC implants. Surgical guide fixation pins in blue.



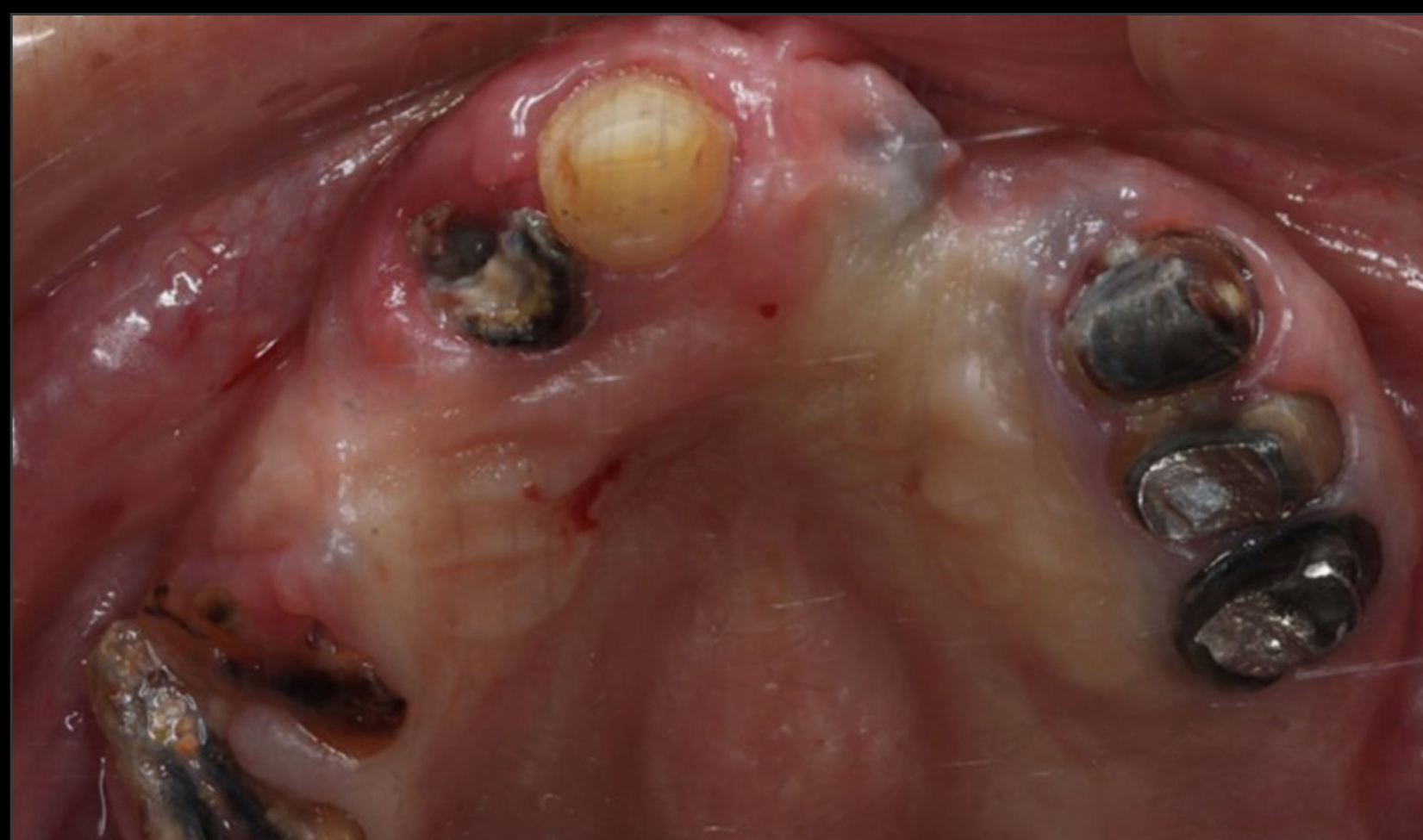
1st guide tooth supported in correct position.



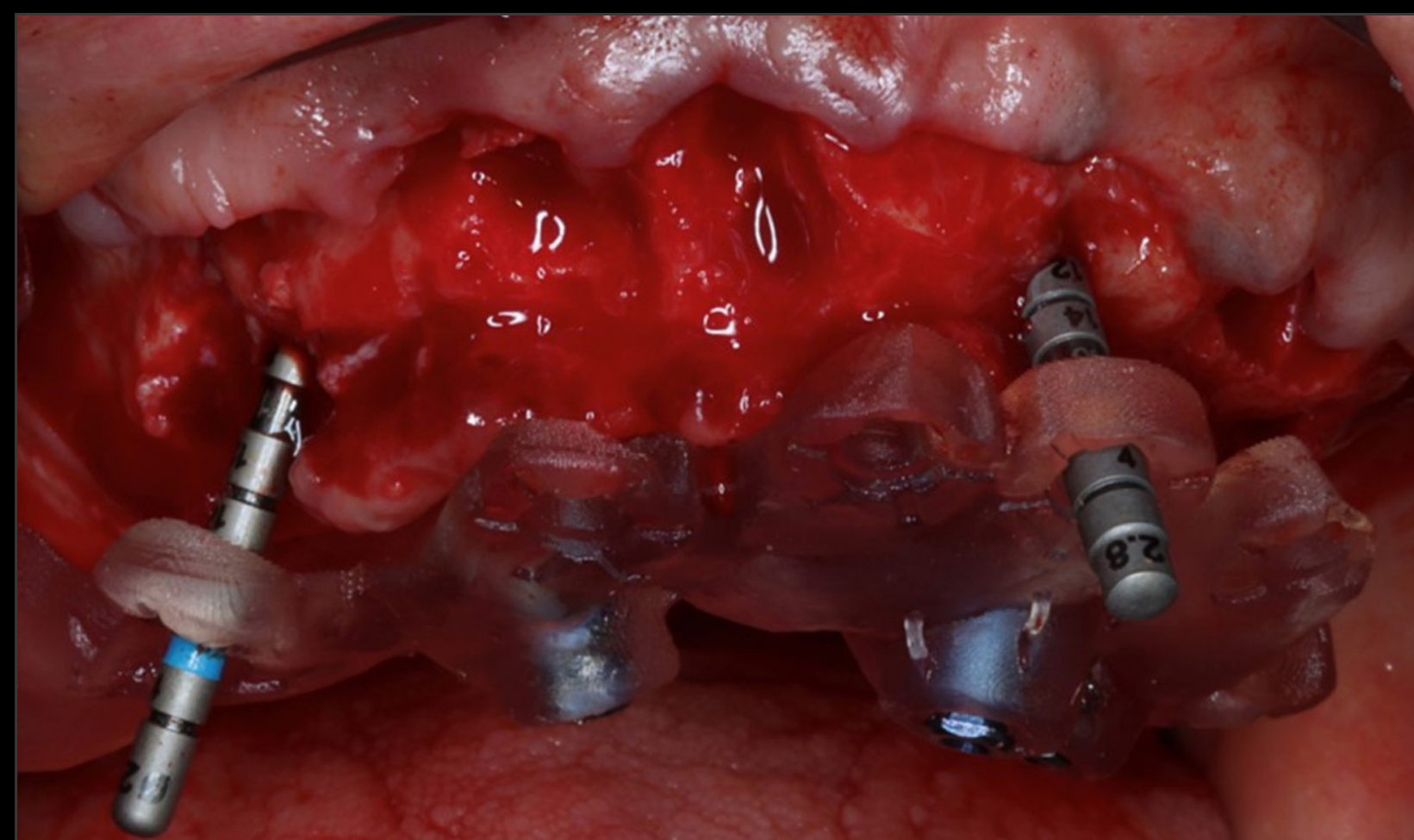
# IMMEDIATE MAXILLARY FULL-ARCH WITH DIGITAL WORKFLOW WITH STRAUMANN BLC

A CLINICAL CASE REPORT BY ANDRE CHEN, PORTUGAL

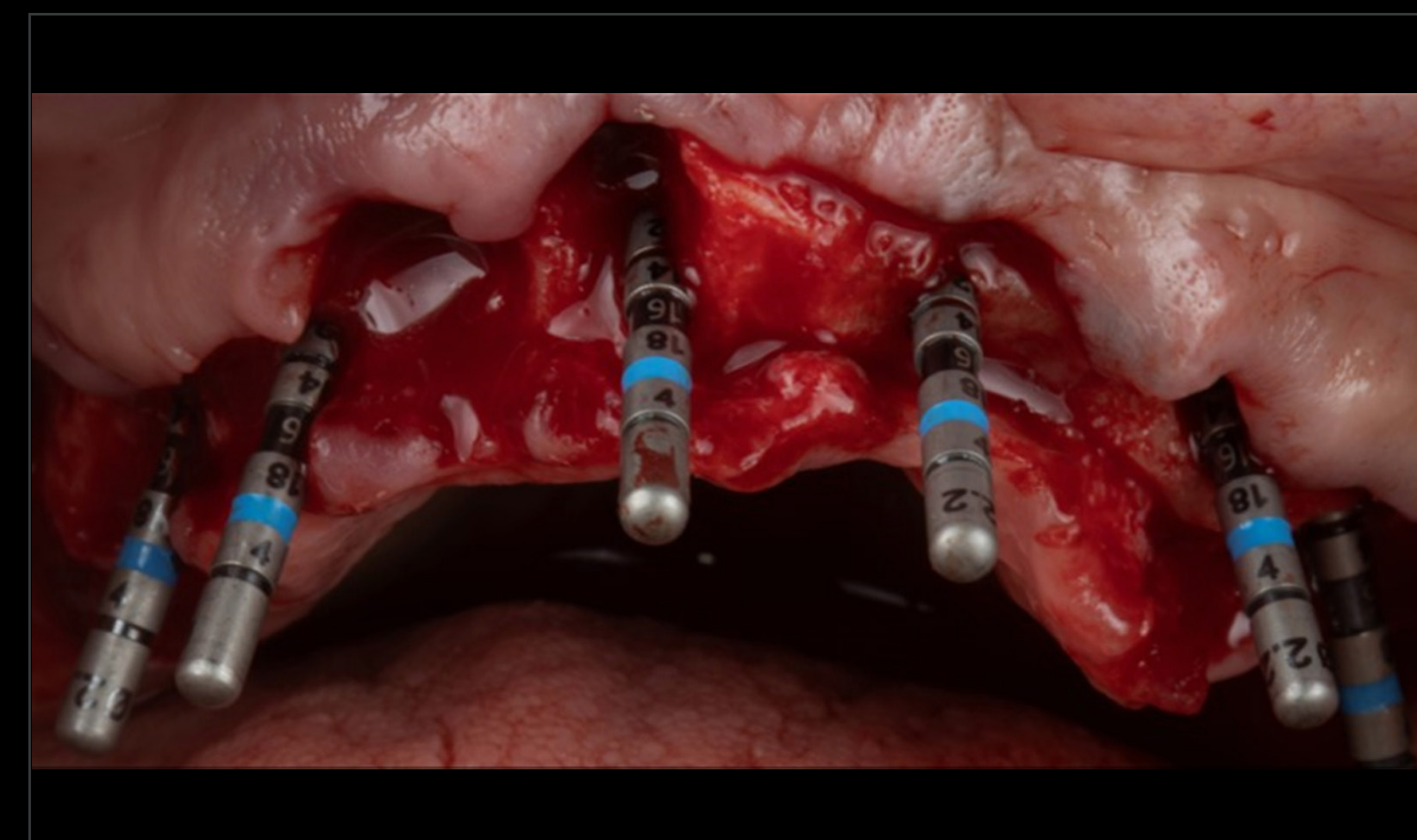
## DETAILS



Intraoral situation after removing bridges and crowns.



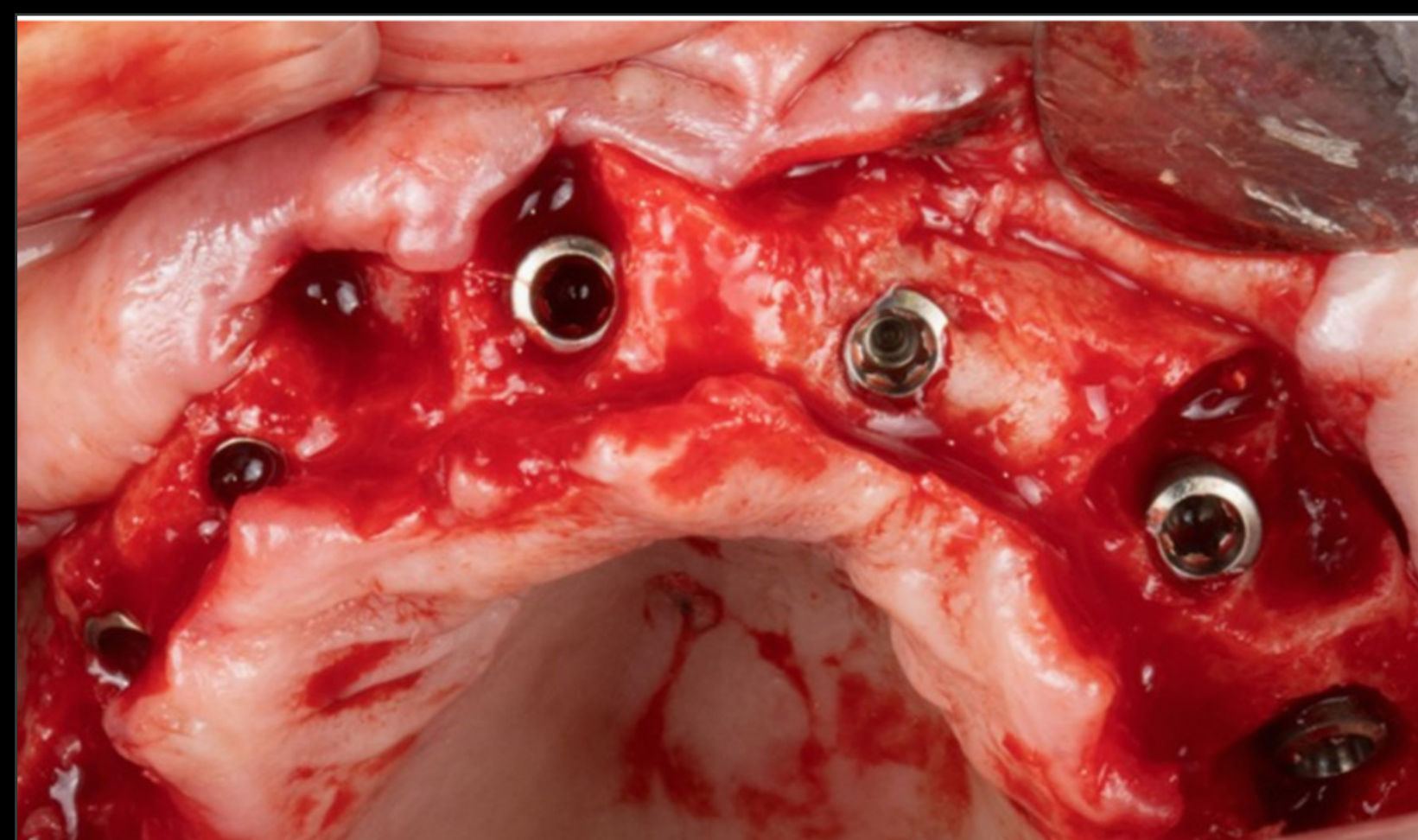
Surgical guide with the alignment pins to check the right drilling angulation.



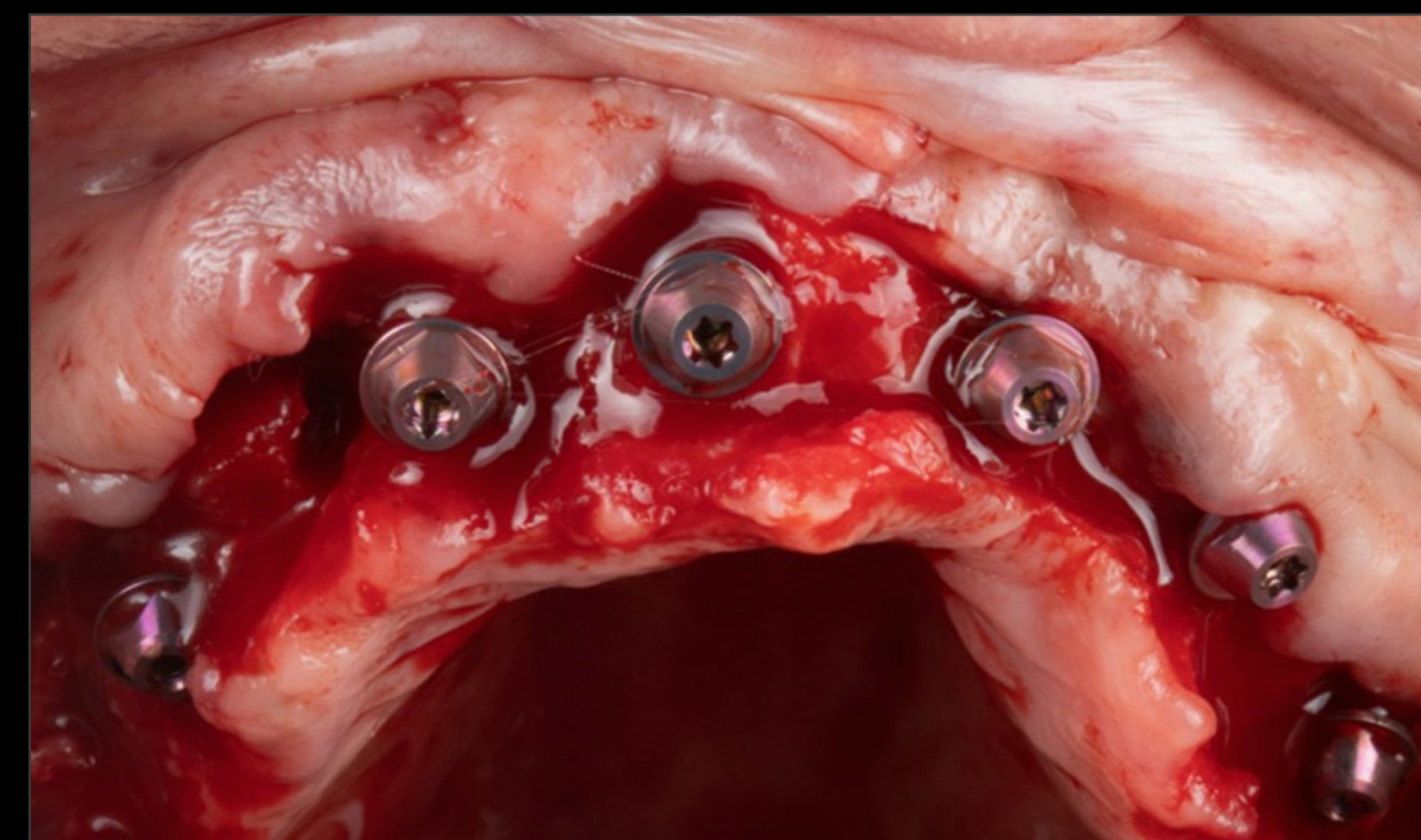
Alignment pins to check the right alignment between implants.



Straumann® BLC Ø3.75 × 12 mm, SLActive®, Roxolid®



Implants in final position.



Screw retained abutments in correct position.



# IMMEDIATE MAXILLARY FULL-ARCH WITH DIGITAL WORKFLOW WITH STRAUMANN BLC

A CLINICAL CASE REPORT BY ANDRE CHEN, PORTUGAL

## DETAILS

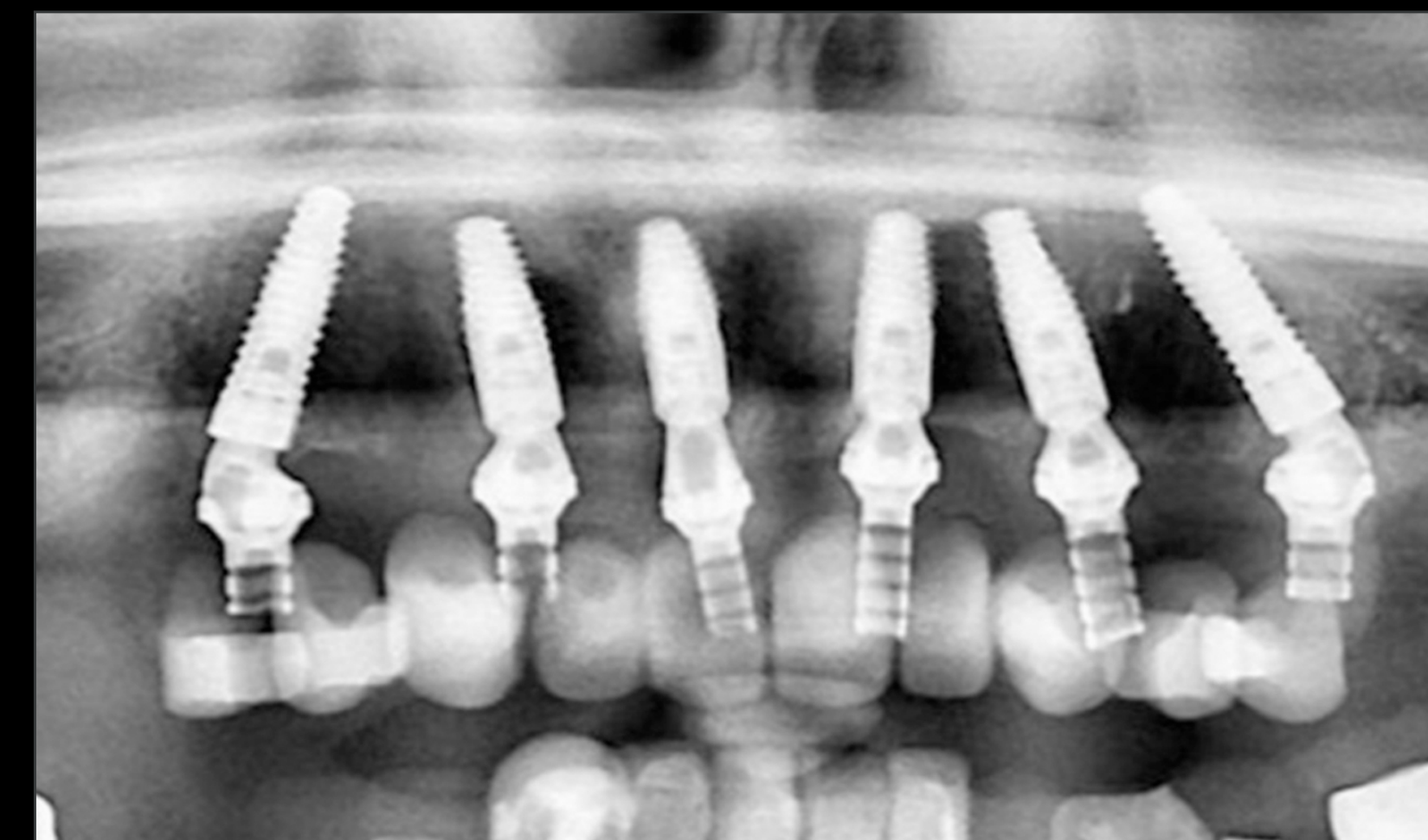
### Treatment Outcome



Provisional screw-retained upper full-arch restoration



Provisional fixed restoration in final position



Radiographic control. Provisional fixed restoration in final position

### Feedback from the Clinician

*"I had a great time with the BLC family, the Velodrill system is fine-tuned with the implant macrogeometry making it easy for implant insertion, torque and immediacy. Belonging to the iEXCEL family allows me to be efficient (clinically and business-wise) with prosth components.*

*It will be for sure in my portfolio of Full Mouth Cases.."*