

STRAUMANN® iEXCEL

CLINICAL CASE REPORT

**MAXILLARY ESTHETIC BRIDGE IN A REGENERATED
BONE AREA WITH IMMEDIATE LOADING
WITH STRAUMANN BLC**

BY FRANCE LAMBERT, BELGIUM

MAXILLARY ESTHETIC BRIDGE IN A REGENERATED BONE AREA WITH IMMEDIATE LOADING WITH STRAUMANN BLC

A CLINICAL CASE REPORT BY FRANCE LAMBERT, BELGIUM

EXPERT



France Lambert

Belgium

Prosthodontics : Damian Szajner

Ceramics: Mirko Picone

DETAILS

- Graduated in dentistry in 2002 and also completed a post-graduate program in Periodontology at the University of Liège.
- In 2005, she received an ITI scholarship to expand her education in implantology at the Harvard School of Dental Medicine.
- Currently, she is a Professor and Head of the Department of Periodontology, Oro-dental and Implant Surgery at the University of Liège in Belgium and the co-director of the dental Biomaterials Research Unit.
- She lectures internationally, is the author of more than 70 international publications and acts as a reviewer for international journals in the same field.
- Chair of the Belgium-Luxembourg ITI section and the past-President of the Belgian Society of Periodontology.

MAXILLARY ESTHETIC BRIDGE IN A REGENERATED BONE AREA WITH IMMEDIATE LOADING WITH STRAUMANN BLC

A CLINICAL CASE REPORT BY FRANCE LAMBERT, BELGIUM

DETAILS

Patient Information

Gender	Male
Age	60
Jaw	Maxilla
Health status	ASA 1
Smile line	High
Bone type	Type 3
Local infection	No
Anatomical defects	Yes
Risk factors	No

Initial Situation



Initial situation



Intraoral situation - upper arch



CBCT analysis

Treatment Planning

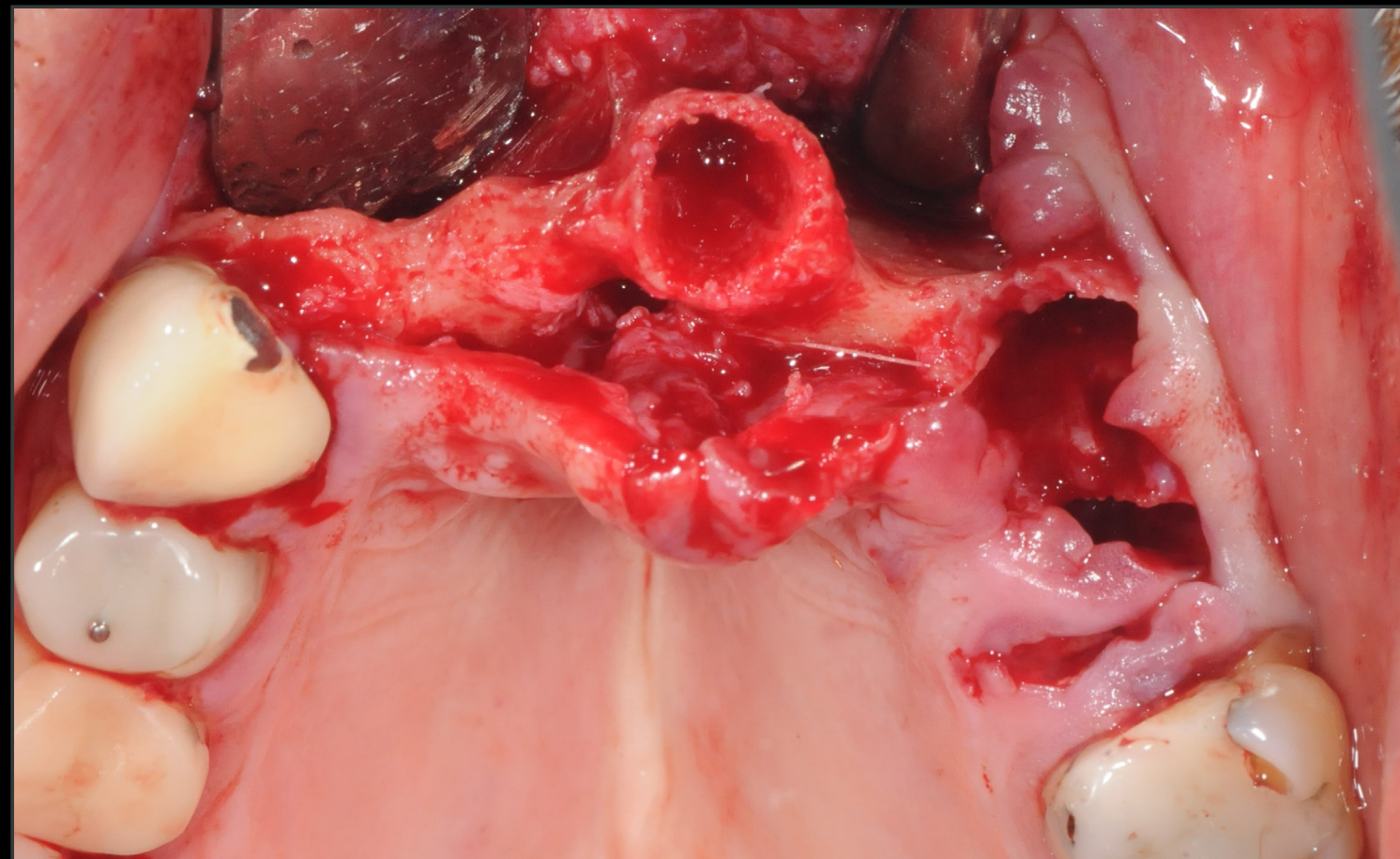
- The patient's age, medical conditions, and expectations are evaluated.
- GBR procedure, 7 months healing before implant placement.
- Guided surgery.
- Placement of 4 apically tapered implants Straumann® BLC® Ø 4.5mm 12mm SLActive® Roxolid®.
- Immediate loading.

MAXILLARY ESTHETIC BRIDGE IN A REGENERATED BONE AREA WITH IMMEDIATE LOADING WITH STRAUMANN BLC

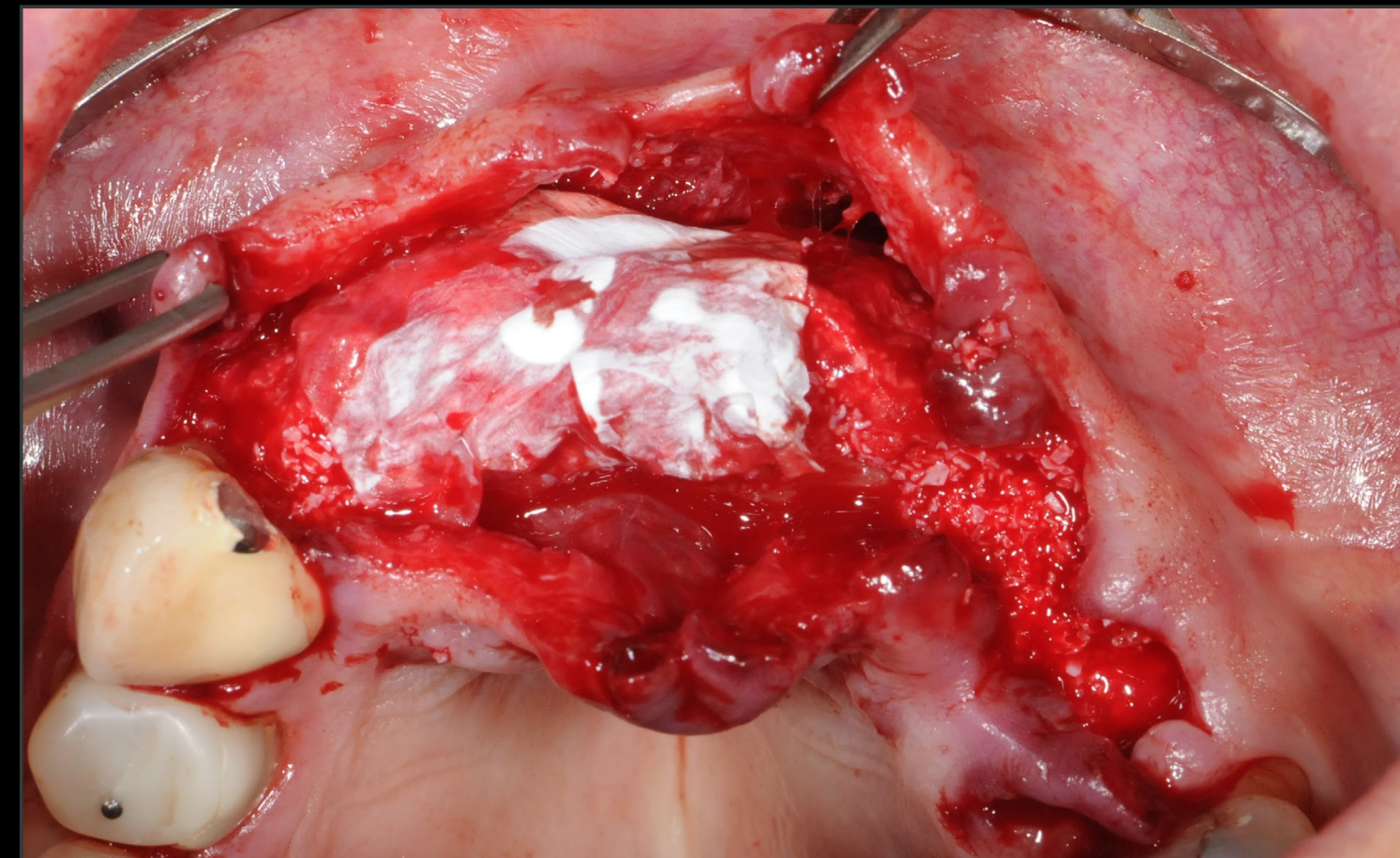
A CLINICAL CASE REPORT BY FRANCE LAMBERT, BELGIUM

DETAILS

Surgical & Prosthetic Procedures



GBR Procedure



GBR Procedure with Xenograft and Jason® Membrane



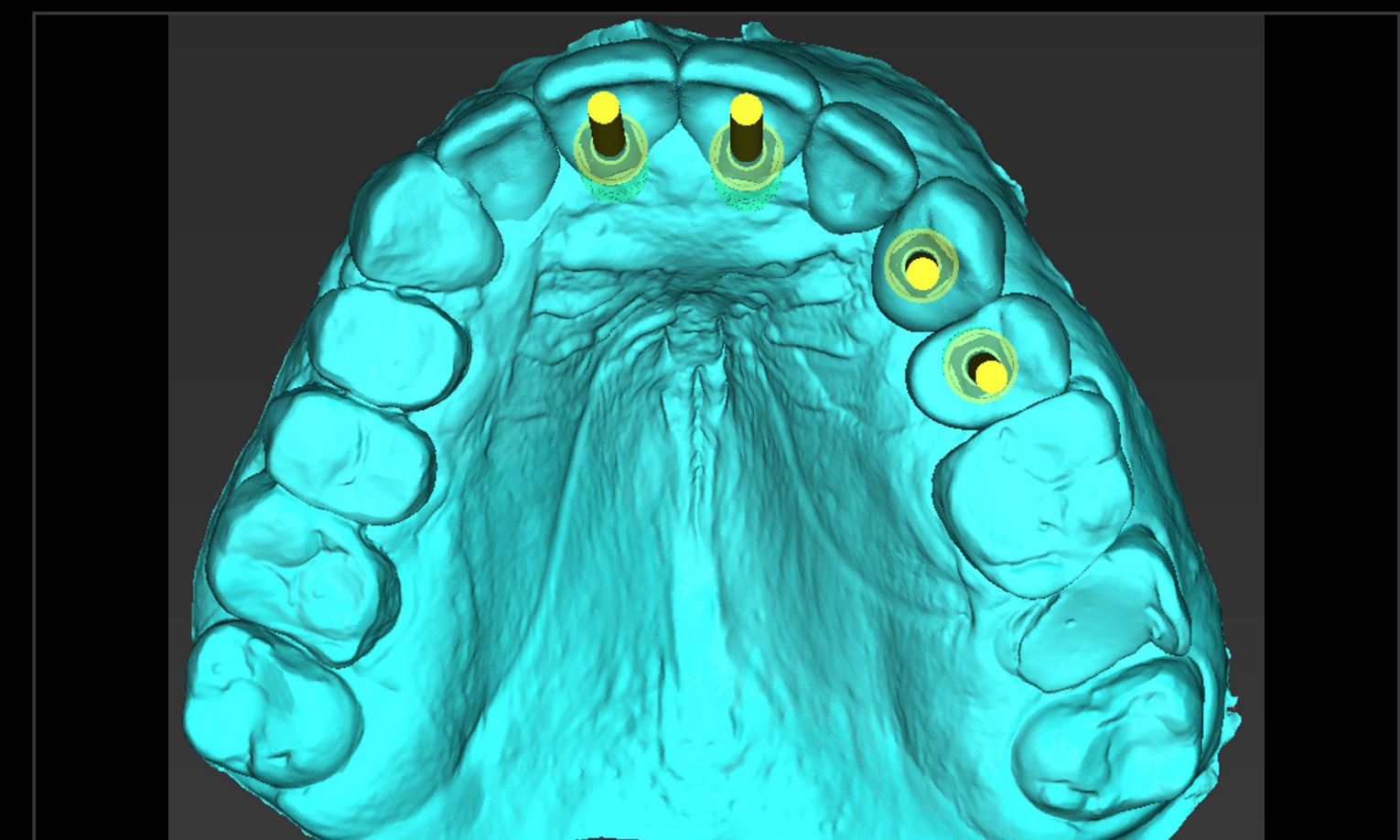
Control 12 days after surgery



Occlusal view 7 months after GBR



CBCT 7 months after GBR



Digital planning

MAXILLARY ESTHETIC BRIDGE IN A REGENERATED BONE AREA WITH IMMEDIATE LOADING WITH STRAUMANN BLC

A CLINICAL CASE REPORT BY FRANCE LAMBERT, BELGIUM

DETAILS

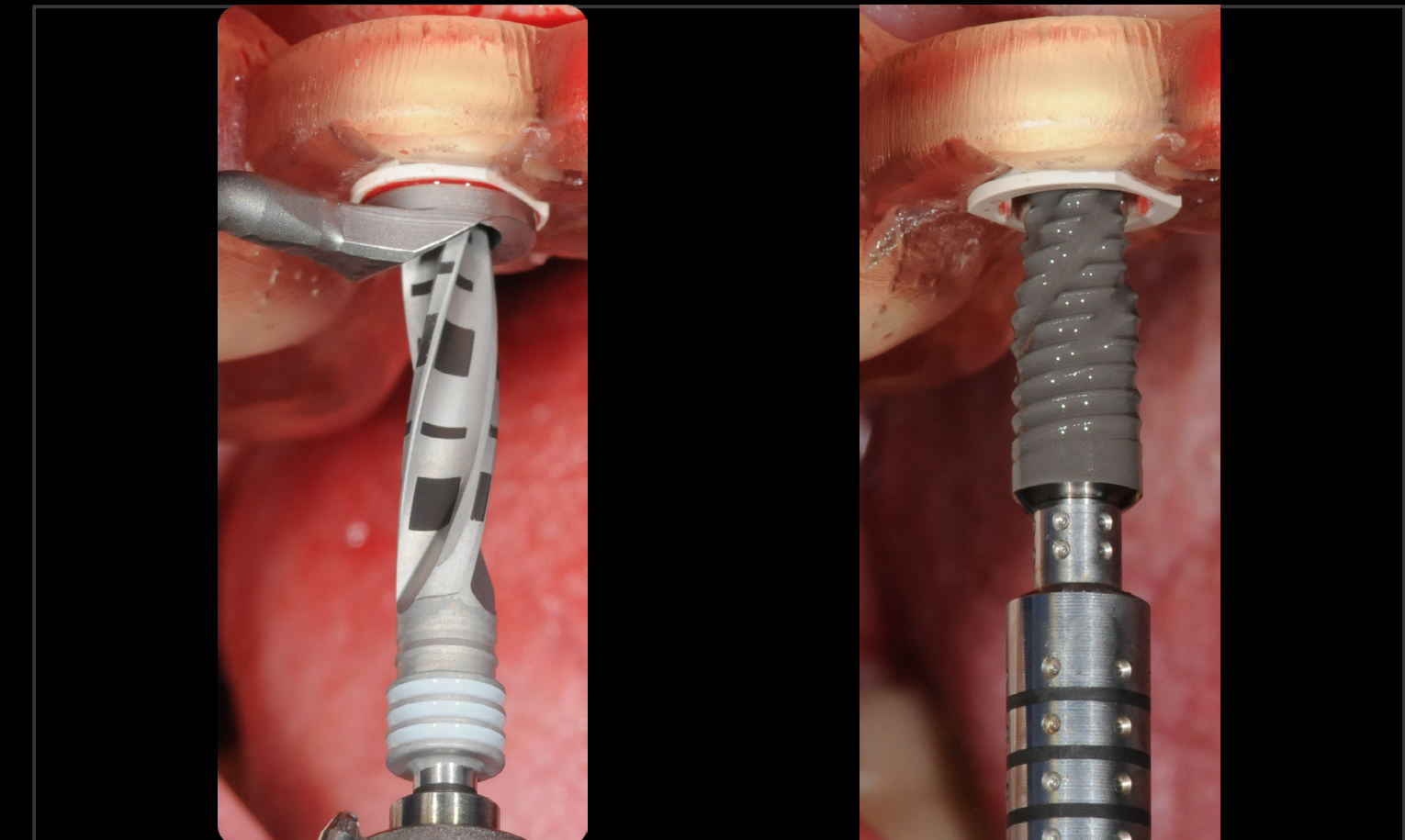
Surgical & Prosthetic Procedures



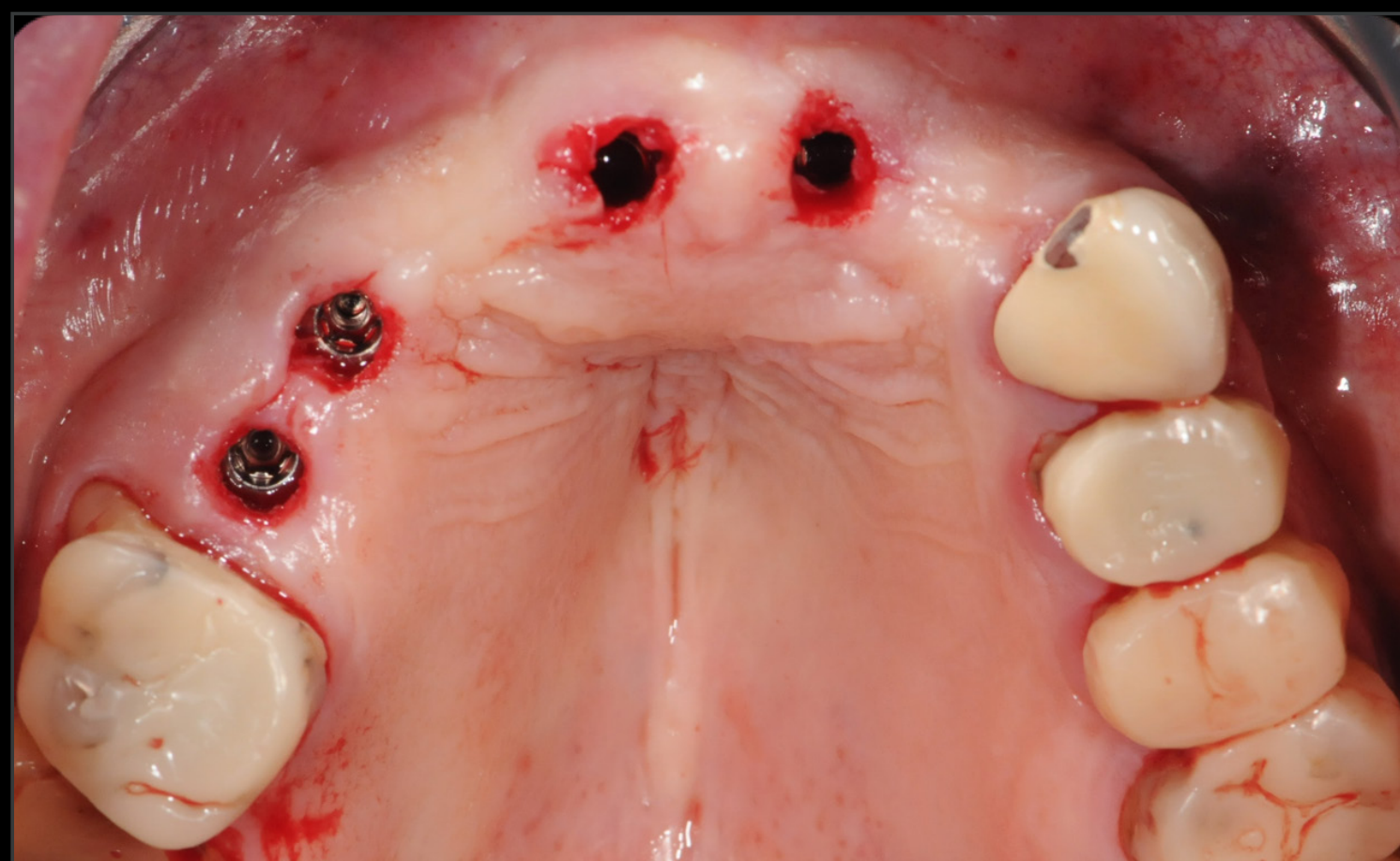
Surgical guide



Surgical guide in position



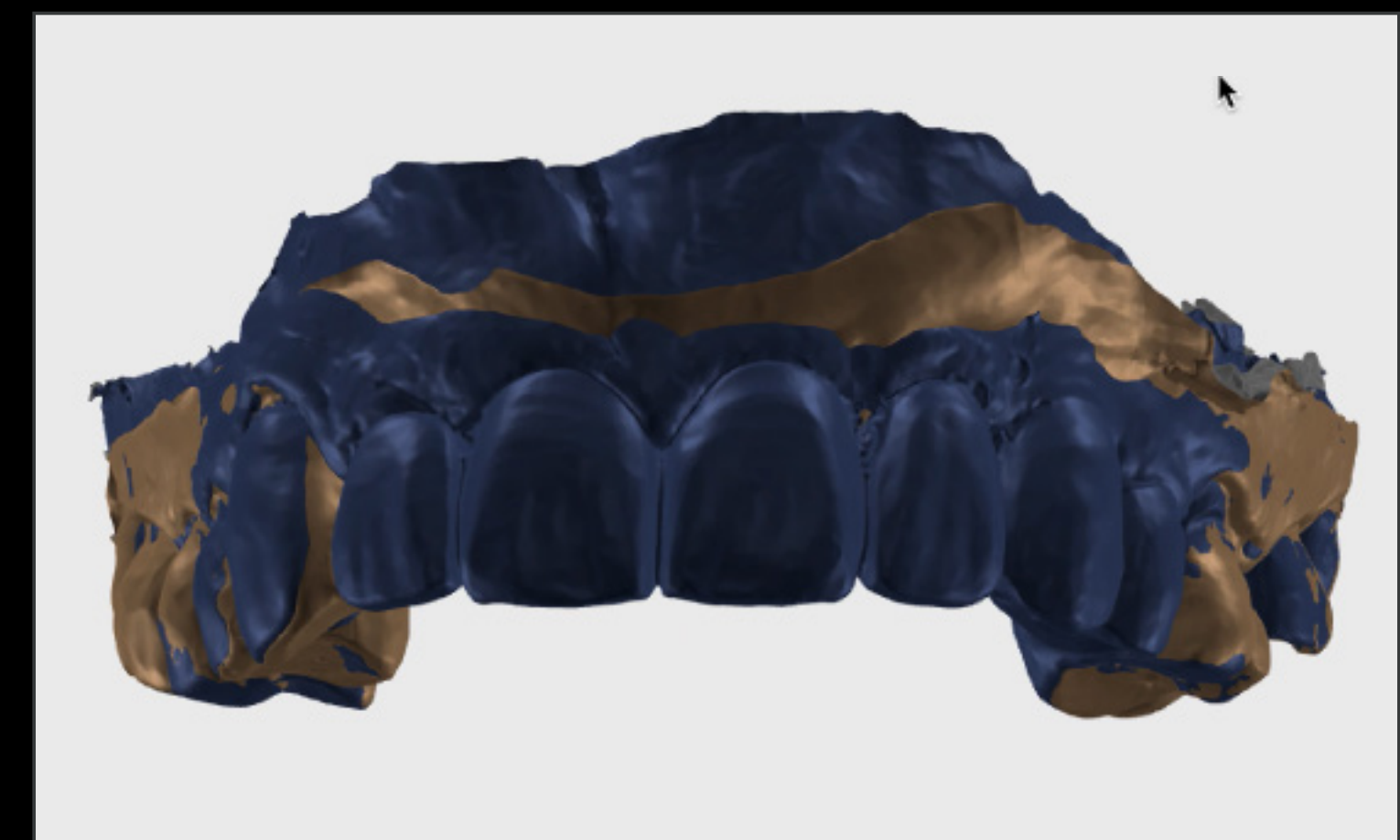
Precise implant positioning through guided surgery



Occlusal view after implant placement



Intra oral scanning



Digital Design

MAXILLARY ESTHETIC BRIDGE IN A REGENERATED BONE AREA WITH IMMEDIATE LOADING WITH STRAUMANN BLC

A CLINICAL CASE REPORT BY FRANCE LAMBERT, BELGIUM

DETAILS

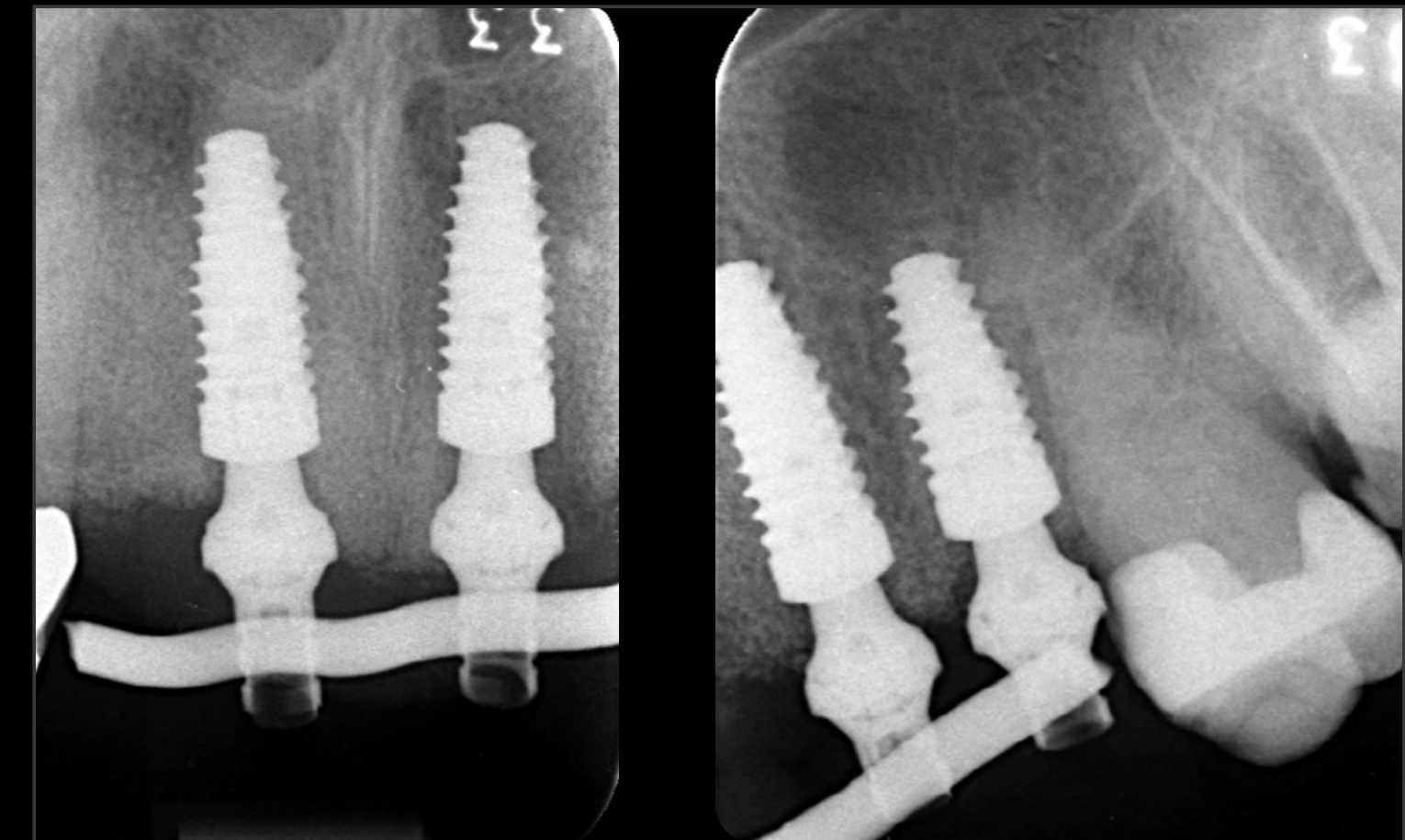
Surgical & Prosthetic Procedures



Provisional restoration



Immediate provisional bridge



Radiographical control



Control after 8 months



Control after 8 months



Final restoration

MAXILLARY ESTHETIC BRIDGE IN A REGENERATED BONE AREA WITH IMMEDIATE LOADING WITH STRAUMANN BLC

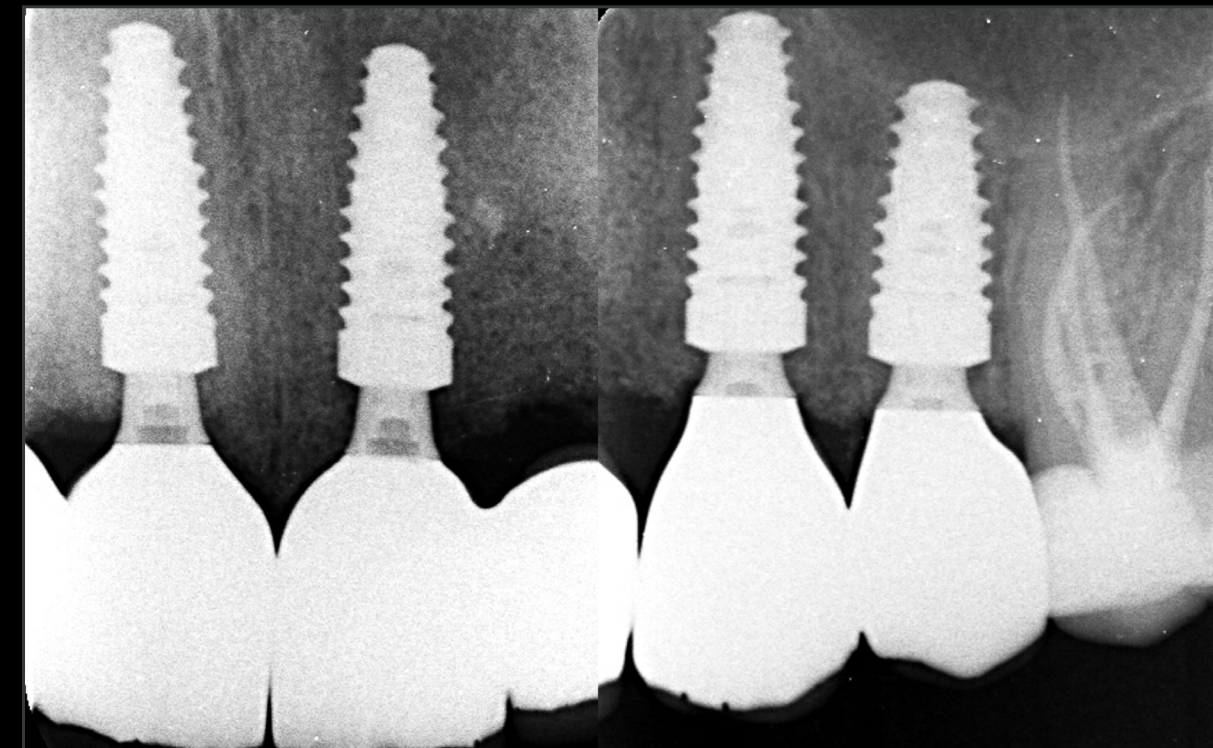
A CLINICAL CASE REPORT BY FRANCE LAMBERT, BELGIUM

DETAILS

Treatment Outcome



Definitive screw-retained implant bridge



Radiographic control. Final bridge

France Lambert

"These implants are suitable for quite a few indications"
"A versatile implant"

Before



Final restoration

